

Children's Social Care Structure

**Interim Executive Director of
Children's Social Care and Education
Lisa Lyons**

**Head of
Children's Social
Care
Laura Knights**

**Interim Head of
Improvement
Hillary Brooks**

**Interim Head of
Safeguarding and
QA
Caroline McKenna**

EDT, MASH

**Interim Service Manager
Dharmesh Vyas**

MASH Team
St Peter's House
Tel: 0151 934 4013/4481

Team Manager
x2

Social Worker
X 5 (inc 1 agency)

Customer Access Officers
x5

FSW/Researcher
x3

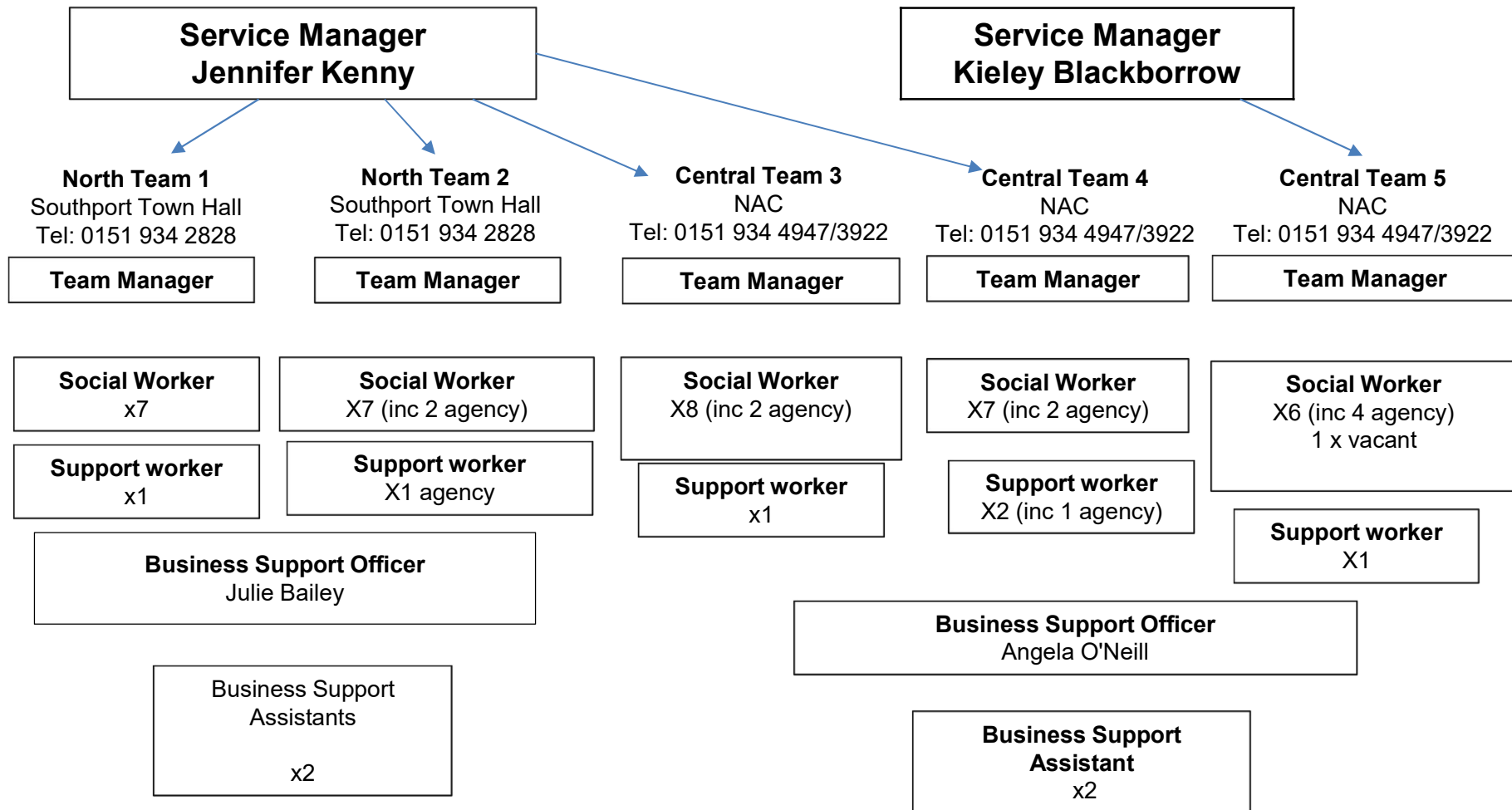
Emergency Duty Team
Linacre Lane
Tel: 0151 934 6025

Team Manager
x1

Social Worker
x5

Business Support Officer
x1
Business Support Assistant
x2

Locality Services North & Central



Locality South

Service Manager
Kieley Blackborow

South Team 6
Magdalen House
Tel: 0151 934 2511

Team Manager

Social Worker
X7 (inc 1 agency)

CSC Support Worker
x1

South Team 7
Magdalen House
Tel: 0151 934 2511

Team Manager

Social Worker
X9 (inc 3 agency)

CSC support worker x
2

South Team 8
Magdalen House
Tel: 0151 934 2511

Team Manager

Social Worker
X7 (inc 2 agency)
1 x vacant

CSC support worker x
1

Business Support Officer
x1

Business Support Assistant
x3



Locality North

**Service Manager
Jennifer Kenny**

**Team 10
Southport
Team Manager**

Social worker x5

CSC support worker x
1 (inc 1 agency)

**CSC business support assistant
(vacant)**

Locality Services - CAS

Service Manager
Kieley Blackborow

CAS
Melrose House
Tel: 0151 934 6025

Team Manager

CAS Practitioner x12

**Business Support
Officer**
x1

**Business Support
Assistant**
x1

Handyman
x1

Corporate Parenting Service

Service Manager
Julie Bucknall

Service Manager
Laura Doyle

Team 1
Magdalen House
Tel: 0151 934 3843

Team 2
Magdalen House
Tel: 0151 934 3843

Team 3
Magdalen House
Tel: 0151 934 3843

Leaving Care Team
Magdalen House
Tel: 0151 934 3843

Team Manager

Team Manager

Team Manager

Team Manager

Social Worker
X7 (inc 1 agency)

Social Worker
X6
(inc 1 agency)

Social Worker
X6 (inc 3 agency)

PA x 10
3 x vacant

**Family Support
Worker**
X2 (p/t job share)

Family Support Worker
x1

**Family
Support
Worker**
x1

**Employability/
Connexions**
x1

Business Support Officer
x1

**Participation
Officer**
x1

Business Support Assistant
x2

Finance Officer
x4

Fostering Service

Service Manager
Lisa Cummings

Team Manager
Recruitment & Assessment
x1

Fostering Team
Magdalen House
Tel: 0151 934 4308

Team Manager
Supervision &
Review
X1

**Training and Development
Officer**
x1
Recruitment & Support Officer
x2

Assessing Social Workers
x7
1 x Vacancy
Placement Support Workers
x2

Business & Support Officer
x1
Business Support Assistant
x5

**Supervising/Support
Social Workers**
X7
**Placement Support
Workers**
X2

Student Social Workers
X2

Safeguarding Children Unit

**Interim Service Manager
Sarah Quick**

28/30 Sefton Street, Litherland L21 7LB
Tel: 0151 934 3114

**IRO Team Manager
X2 (inc 1 x agency)**

**QA and Improvement
Manager**

Designated Officer

CE Analyst

**Business Support
Officer**

**IROs
X8**

**CP Chairs
X2**
X 3 vacant

**Business Support
Assistant
x4**

**Conference &
Review Support
x5**

CWD Team

Matt Greenhalgh
Service Manager

Team manager x 2

**Team manager-
Springbrook
residential x 1**

Social workers x 7 (inc 1
agency)
EHCP workers x 2

Business support assistant x 2