



Chiefs Constables Council Crime Business Area.

CC Andy Cooke QPM.

7TH October

Session 3



Biometrics Update

What are biometrics.

- **Biometrics** – biological identifiers or measurements of *physical* or *behavioural* characteristics that can be used to identify individuals.
- **Biometrics data** - digitalised data stemming from biometric characteristics.
- **Measurement types** – Physiological, behavioural
- **Biometrics** - are transcend forensics, intelligence, data and technology and are integrally intertwined with the current ethical and diversity debate.

Biometric Future

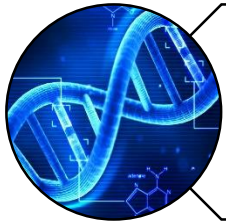
- **Conversion** of biometrics data into digital forms.
- **Security** of biometrics data and securing data with biometrics.
- **Merging** of data sets.
- **Sharing** technological platforms and AI (Artificial technology)
- **Convergence** of physical & digital identity has Officer safety implications.
- **Significant** Ethical and diversity implications
- **Emerging biometrics** - Live facial recognition is the current challenge although voice is already upon us. Both offer significant resource efficiency opportunities as well as security, intelligence and identification opportunities.
- **Data biometrics** – maybe unmanageable !!!.

Types of biometrics

Traditional Biometrics



Fingerprints



DNA



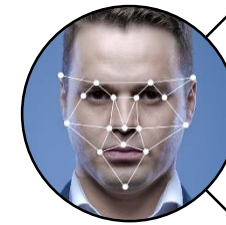
Retrospective
Facial
Recognition

Biometrics Exploitation



Driven by Data & AI

Emerging Biometrics



Live Facial
Recognition

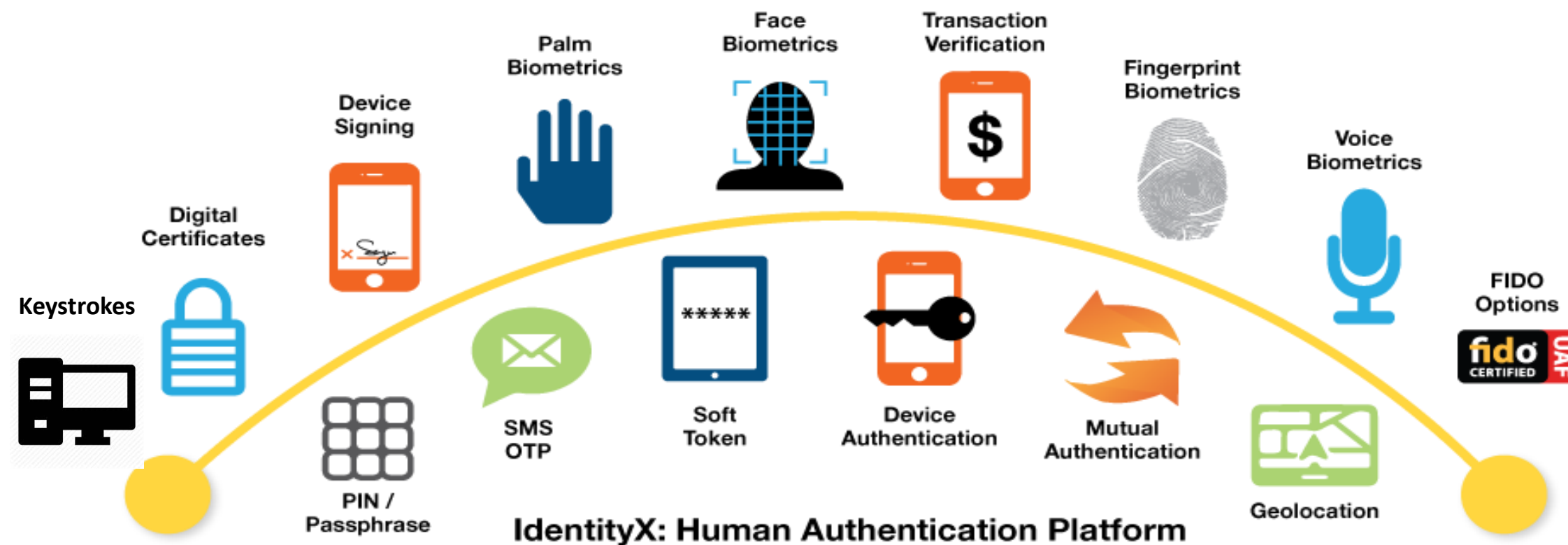


Voice



Digital

Biometrics applications



NPCC position

As Now position

S31 Law Enforcement



Desired position

☐ S31 Law Enforcement



South Wales Police

Live Facial recognition



SWP LFR - key messages



- **The position to date:**
- S31 Law Enforcement



SWP LFR - key messages



DCC Vaughan has been appointed the NPCC FRT lead and is seeking to deliver consistency of LFR deployment and terminology across policing.

- **The immediate future:**

S31 Law Enforcement.



Metropolitan Police



MPS LFR - key messages

- **The position to date:**

S31 Law Enforcement



MPS LFR - key messages

- **Current work:**

S31 Law Enforcement

Key messages & implications for policing

- Biometrics are changing significantly, moving away from traditional forensics and will influence the future of policing.
- Technology has brought biometrics into everyday life through call centres, phone, data collection.
- We need a National strategy and structure to future proof policing and exploit opportunities.
- NPCC and LEA need to position itself to engage and influence strategic investment to meet the LEA operational need.
- We need to share the risk and costs across LEA and Home Office.
- We need to develop a positive narrative to maintain public confidence, which put ethics and diversity foremost in our approach.
- This is expanding business, sitting across all our work, therefore we need to professionalise our approach and develop proposals on most effective way forward.

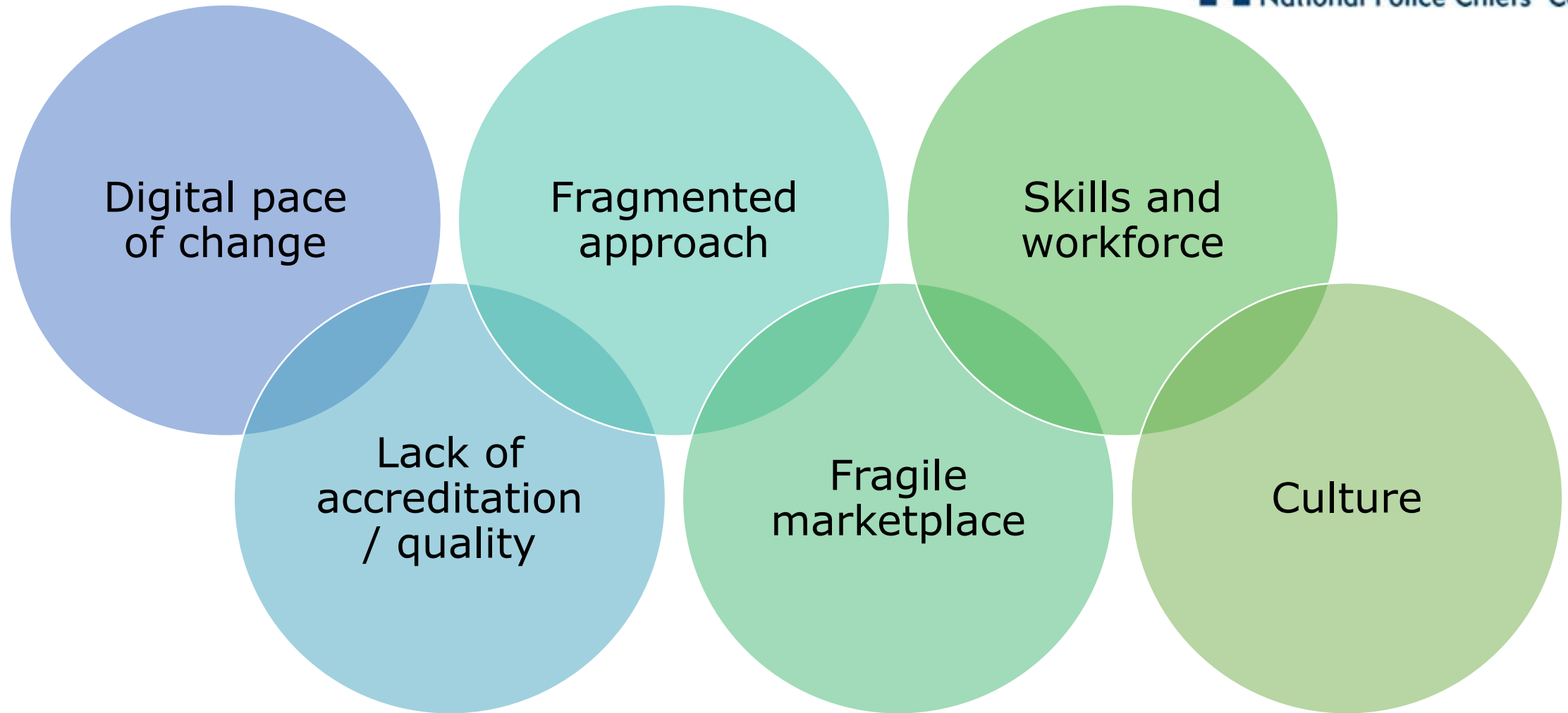
S31 Law Enforcement



Forensic update

CC James Vaughan

Challenges for forensics in policing



Six months of FCN

- ✓ Managing risk on COVID-19
- ✓ Created efficiency through national approach to guidance, R&D, etc
- ✓ First time SFR guidance is publicly available in one place
- ✓ First national online quality management system (eQMS) procured
- ✓ £110k in R&D funding for drug violence and other research – £420k more pending
- ✓ Leading national expert networks on CSI, Digital Forensics, etc
- ✓ Held five virtual events with 300+ attendees from forces, on topics including R&D, SFR, etc
- ✓ 38 highly experienced members of FCN core team, handling 195 requests, doing once not 43 times

What implications for policing and the public without a national approach?
Greater risk, extra leg-work, stretched resources, inefficiencies...

Benefits to achieve together

Quality

- Achieving accreditation
- National standards on eQMS
- National expert networks
- Validate once not 43x

Science

- Access R&D funding
- Fill gap in innovation
- Efficiency of national guidance

Operations

- National forensics platform
- Standardised fingerprint services
- Simple, efficient, cash benefits

Commercial

- Managing risk on Op Sourberry
- And now Op Talla
- Better contracts – dynamic, scalable, coordinated

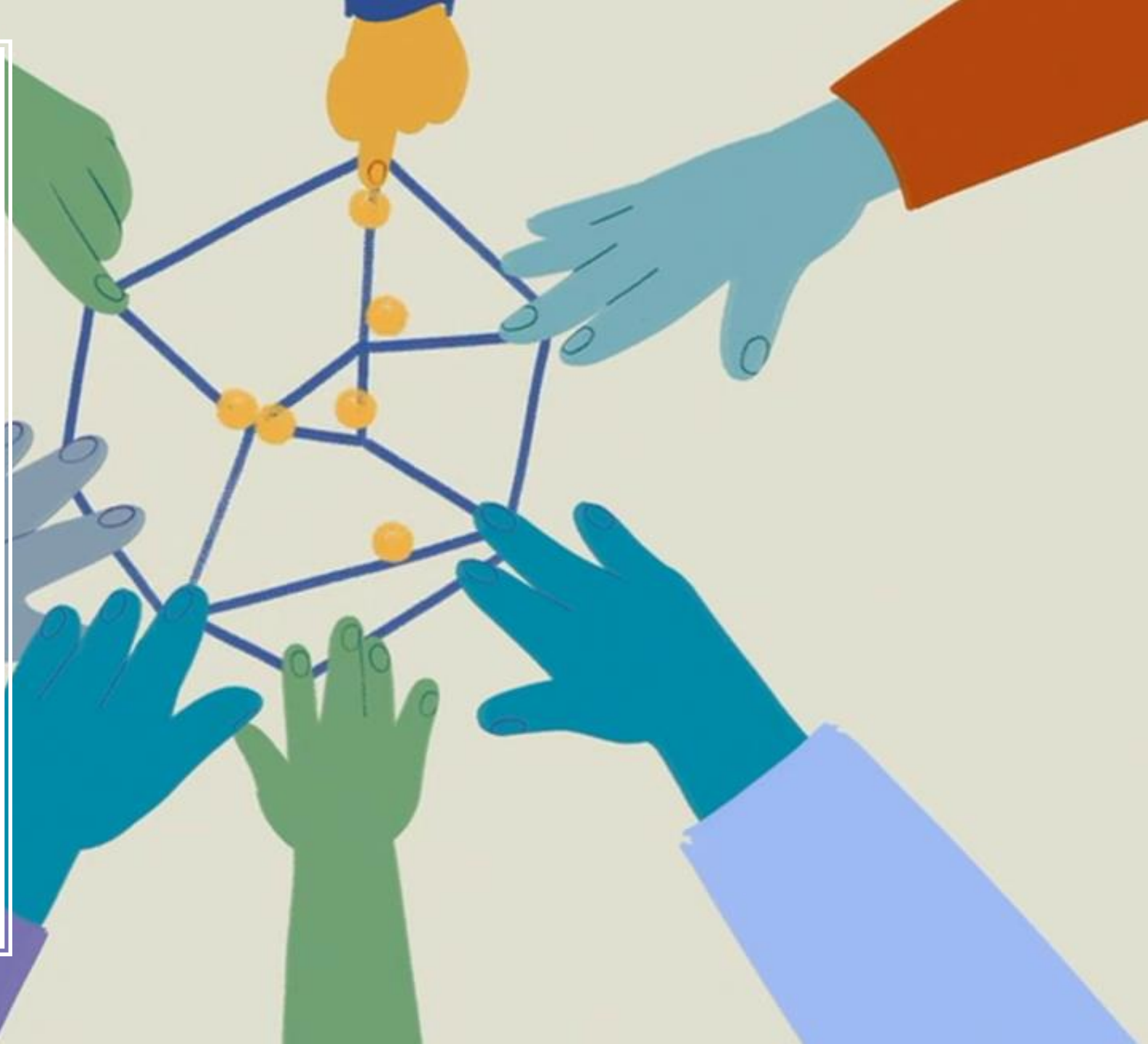
Future of forensics

A national networked approach is the best way to solve challenges in forensics.

FCN is that approach.

It's not easy or simple, but it's the right thing to do.

Forensics is changing. Join the change.





Op Opal

DCC Amanda Blakeman

OPAL – Serious Organised Acquisitive Crime National Intelligence Team.

National Strategic Assessment 2020 recognises organised acquisitive crime amongst the main threats faced by the UK. It has a significant impact on the public, communities, industry and the national infrastructure.

The Government have set policing a target of reducing neighbourhood crime by 20%, this includes burglary, robbery, vehicle crime and theft from person.

Despite this OAC is not seen as a priority in some forces or ROCUs. Police response to acquisitive crime at times is limited and inconsistent, our response to cross border crime has not been co-ordinated with organised crime groups exploiting borders.

Funding – Recommendation – original tiered model of funding is retained.

OPAL funding model based on a three tier approach where forces were categorised in one of those tiers.

Feedback from Chief Constables requested that the financing of the team be considered in line with the agreed NRE process. This was completed and a document has been circulated to Chief Constables demonstrating the differences. It should be noted that OPAL (formerly Op Liberal) was based on a funding mechanism that was agreed before the NRE arrangement was put in place.

NRE approach demonstrated some significant disparity, eg. London, but the new mechanism does not take account of the fact that at present PSNI and Police Scotland contribute as a tier 1 force, which sits outside the HO funding formula attached.

Business Benefits of OPAL – some headlines – for noting.

Opal supports National Leads for acquisitive crime, attends national meetings, collation and analysis of data, identify current and emerging trends, producing national problem profiles and threat assessments. It also acts as a point of contact at a national level for partner agencies and businesses for acquisitive crime. E.g. Toyota, BT, Virgin etc

Business Benefits of OPAL

- Business Benefits of OPAL
- To discover and develop intelligence for SOAC
- To provide better understanding and awareness of SOAC
- Utilise a multi-agency partnership
- Co-ordinate intelligence at a regional, national and international level
- identify and share good practice and learning
- Target higher harm causers informed in SOAC



Tackling Organised Exploitation: (TOEX)

CC Simon Bailey QPM



Spending Review

S31 Law Enforcement



Year 1 pilot will consist of;
S31 Law Enforcement

Selection of 3 pilot regions: Rationale

Chinese Sexual Exploitation: Operation Belle

S31 Law Enforcement



S31 Law Enforcement

S23 Information provided by or concerning certain security bodies



SOC update

SOC SR Work Packages

S31 Law Enforcement



OFFICIAL

Spending Review / 20k

S31 Law Enforcement

S23 Information Supplied by or concerning certain security bodies

Decisions / Upcoming Work

S31 Law Enforcement



Next Steps

S31 Law Enforcement



OFFICIAL