

Our Ref: FOI004RESP/ID1544

27th March 2018

Private & Confidential

Mr M Woodall

request-467034-5c3b1c13@whatdotheyknow.com

Bevan House
Barony Court
Nantwich
Cheshire
CW5 5RD

Tel: 01270 275303

www.southcheshireccg.nhs.uk

Please direct any queries to:
Governance & Compliance Team
Direct Line: 01270 275590

Email: foirequests.nhssouthcheshireccg@nhs.net

Dear Mr Woodall

**Re: Freedom of Information Act 2000
Continuing Healthcare (CHC)**

Thank you for your information request indicated in bold below, which has now been considered under the Freedom of Information Act 2000 by NHS South Cheshire Clinical Commissioning Group (CCG), and I am able to provide you with the following information and responses.

You asked:

Under the Freedom of Information Act I would like to request the following information.

- 1. How many adults in your CCG currently receive NHS Continuing Healthcare?**
a) per population

This information is publicly available on NHS England's website, which can be accessed using the following link:- <https://www.england.nhs.uk/statistics/statistical-work-areas/nhs-chc-fnc/2017-18/>

- 2. How many adults in your CCG currently receive each of the following:**

a) Fully funded NHS Continuing Healthcare packages of care?	139
b) Joint funded Local Authority / NHS Continuing Healthcare packages of care?	*Less than 5
c) NHS funded nursing care?	401
d) "Care at Home" NHS Continuing Healthcare packages care?	41

* NHS South Cheshire CCG is unable to provide the exact details due to the low number involved and the risk of identification of individual patients. The data held by the CCG contains small numbers and, in accordance with NHS Digital, guidance on Hospital Episode Statistics (HES), analysis of small numbers (1-5) should be suppressed.

- 3. What was the total NHS Continuing Healthcare budget for adults in your CCG in 2015-16, 2016-2017, 2017-2018?**

17/18	16/ 17	15/16
£	£	£
7,313,000	7,047,000	6,345,000



These figures represent fully funded CHC clients only. This does not include FNC, PHB, Jointly Funded, Children or Retrospective funding requests.

4. What was the actual amount spent on NHS Continuing Healthcare for adults by your CCG in 2015-16, 2016-2017, 2017-2018?

17/18	16/ 17	15/16
£	£	£
7,501,126	8,022,877	5,775,564

These figures represent fully funded CHC clients only. This does not include FNC, PHB, Jointly Funded, Children or Retrospectives

5. For each of the following categories, what was the actual amount spent by your CCG in 2015-16, 2015-16 2016-2017, 2017-2018 for those adults in receipt of:

- Fully funded NHS Continuing Healthcare packages of care?
- Joint funded Local Authority / NHS Continuing Healthcare packages of care?
- NHS funded nursing care?
- “Care at Home” NHS Continuing Healthcare packages of care?

	17/18	16/17	15/16
	£	£	£
1. CHC Fully Funded	7,501,126	8,022,877	5,775,564
2. Joint Funded	191,052	123,708	327,823
3. Funded Nursing Care	3,739,205	4,039,000	2,735,317
4. Care at Home	This amount is contained within a) above and not split out		

6. What is your CCG’s total NHS Continuing Healthcare budget for adults for each of the years 2017-18, 2018-19 and 2019-20?

17/18	18/19	19/20
£	£	£
7,313,000	See note	See note

NOTE: Plans for 18/19 have been submitted in draft to NHS England on 8th March 2018, so cannot be confirmed. Final plans are due to be submitted on 30th April as per the national timetable. No detailed budget info currently available for 19/20.

7. If your response to Question 6 shows you propose to maintain your NHS Continuing Healthcare budget at current levels or reduce your NHS Continuing Healthcare budget for adults in your CCG, please provide a full explanation of how you will achieve this without making unlawful decisions about eligibility or reducing the size of packages of care.

Please refer to the response in question 6.

8. How many members of staff do you have within the CHC team?

Please list each role from Director, management, Nurse Assessors to Admin in bands and in FTW hours.

NHS South Cheshire CCG has 82 members of staff within the CHC team. This number does not include contract staff.

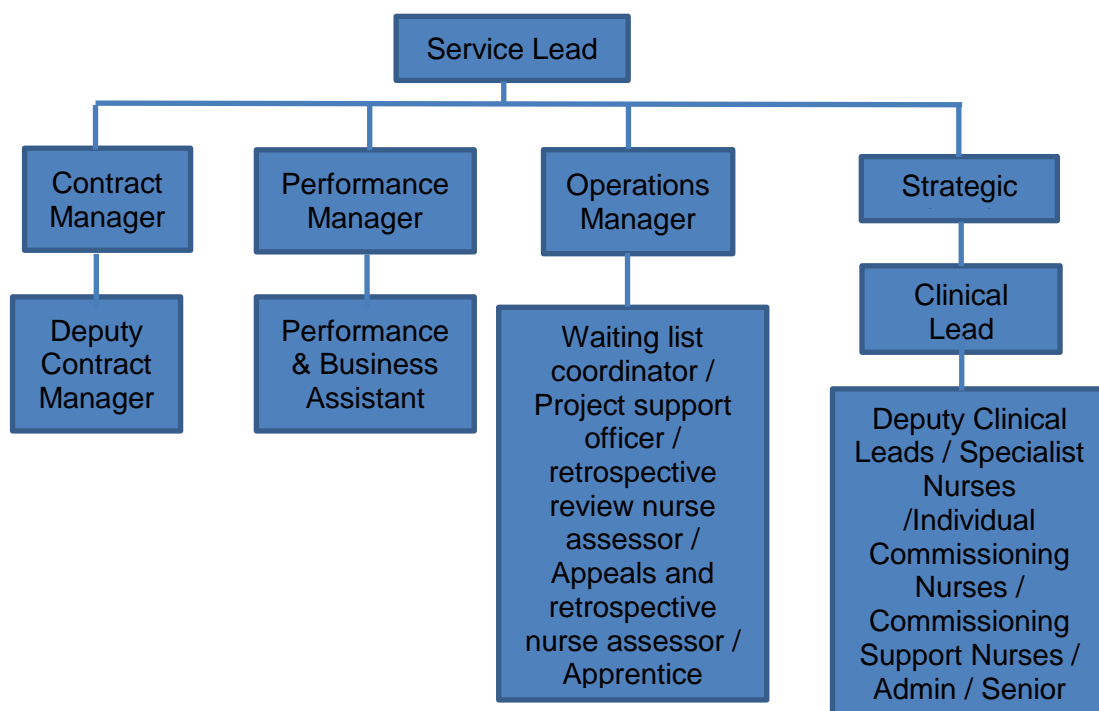


Please note: The CHC Service is hosted by NHS South Cheshire CCG and provides support to 5 CCGs in Cheshire and Wirral. The figure quoted is the number of staff across the whole service. This is not apportioned by CCG.

Roles within CHC

Service Lead x 1WTE
 Strategic Lead x 1WTE
 Clinical Leads x 7WTE
 Deputy Clinical Leads x 4WTE
 Specialist Nurses x 11WTE
 Individual Commissioning Nurse x 18WTE, x 2 0.5WTE, x 2 0.8WTE
 Commissioning Support Nurses x 1WTE
 Senior Administrator x 4WTE
 Administrator x 13WTE, x 3 0.6WTE, x 1 0.5WTE
 Waiting List Coordinator x 2WTE
 Performance manager x 1WTE
 Performance and Business Assistant x 1WTE
 Contract Manager x 1WTE
 Deputy Contract Manager x 1WTE
 Operations Manager x 2WTE
 Project Support Officer x1WTE
 Business Administrator Apprentice x 1WTE
 Retrospective Review Nurse Assessor x 2WTE
 Appeals and Retrospective Review Coordinator x 1WTE
 Commissioning Support Manager x 1WTE

9. Please provide an organisational CHC Team Workforce structure



10. What is your workforce spend 2015-2016, 2016-2017, 2017-2018 & 2018-2019?

15/16	16/ 17	17/18	18/19
£	£	£	£
496,857	578,500	636,769	623,714

The above figures are for NHS South Cheshire CCG only.

11. Do you use agency?

if yes, Why? - To backfill your staff / vacant posts / annual leave / sickness?

The CCG does use agency staff for short periods. This may be where funding is available due to vacant posts or from some other form of absence (e.g. maternity leave).

If you have any queries or concerns, wish to request a review of our response or are unhappy with the service you have received in relation to this Freedom of Information request, please do not hesitate to contact the Governance & Compliance team; details provided at the top of this letter.

If you request a review of our response and are not content with the subsequent outcome, you may apply directly to the Information Commissioner for a decision. Generally, the Information Commissioner cannot make a decision unless you have exhausted the Freedom of Information complaints procedure provided by NHS South Cheshire Clinical Commissioning Group.

The Information Commissioner can be contacted at:

The Information Commissioner's Office
Wycliffe House
Water Lane
Wilmslow
Cheshire
SK9 5AF

Yours sincerely



Clare Watson
Chief Officer
NHS South Cheshire CCG

