

CONTRACT SPECIFICATION

Tenders are requested for the following contract to operate a bus service.

Contract Reference	QC37402
Route Number	134/N134
Terminus Points	North Finchley and Tottenham Court Road Station
Contract Basis	Incentivised
Commencement Date	4 th February 2012
Vehicle Type	87 capacity, dual door, double deck vehicles
Maximum Approved Dimensions	10.6 metres long and 2.55 metres wide
Advertising Rights	Operator
Sponsored Route	No
Minimum Performance Std - Route No. 134	Average Excess Wait Time - No more than 1.30 minutes
Extension Threshold - Route No. 134	Average Excess Wait Time Threshold - 1.15 minutes
Minimum Operated Mileage - Route No. 134	No less than 98.00%
Departing on Time - Route No. N134	No less than 85.00%
Minimum Operated Mileage - Route No. N134	No less than 99.00%

Tender Return Date: later than 12 o'clock on 7 February 2011

SERVICE SPECIFICATION

CONTENTS

- 1) NOTES
- 2) SCHEDULE REQUIREMENTS & PINCHPOINTS
- 3) QSI POINTS & MILEAGE
- 4) OPERATIONAL CONSIDERATIONS
- 5) CURRENT PERFORMANCE, ROUTE RECORD & IBUS MILEAGE

1) NOTES

Proposed Changes:

At this time, no changes are proposed to the existing service for introduction prior to the commencement of the new Route Agreement for Route No. 134 & N134.

Tenderers should note that the following alterations (subject to consultation) are proposed as part of this Service Specification for introduction with the new Route Agreement:

- The Mondays to Fridays AM and PM peak flow journeys are withdrawn. The short working journeys between Archway and Tottenham Court Road are withdrawn.
- All unspecified short working journeys are withdrawn
- The designation Route No. N134 is used for contractual purposes only. This service will be marketed as Route No. 134. This includes all publicity, including destination blind displays.
- **Tenderers must identify the cost of the Nightly element of this service separately.**

2) SCHEDULE REQUIREMENTS & PINCHPOINTS

2.1) MONDAY TO FRIDAY SCHEDULE REQUIREMENTS & PINCHPOINTS

North Finchley to Tottenham Court Road Station			Tottenham Court Road Station to North Finchley		
First departure no later than 0525.			First departure no later than 0610.		
0520 - 0600	Every 12 minutes		0605 - 0645	Every 12 minutes	
0601 - 0645	Every 7-8 minutes (8 buses per hour)		0646 - 0745	Every 7-8 minutes (8 buses per hour)	
0646 - 0840	Every 5 minutes		0746 - 0900	Every 5 minutes	
0841 - 1500	Every 6 minutes		0901 - 1500	Every 6 minutes	
1501 - 1800	Every 5 minutes		1501 - 1830	Every 5 minutes	
1801 - 1900	Every 6 minutes		1831 - 1930	Every 6 minutes	
1901 - 2100	Every 7-8 minutes (8 buses per hour)		1931 - 2200	Every 7-8 minutes (8 buses per hour)	
2101 - 2315	Every 10 minutes		2201 - 0005	Every 10 minutes	
Last departure no earlier than 2310.			Last departure no earlier than 2400.		
Pinchpoints					
Kentish Town Station	0730 - 0900	5 minutes	Highgate Station, Woodman	0735 - 0815	8 minutes
	1500 - 1535	6 minutes		0816 - 0900	5 minutes
	1536 - 1630	5 minutes		1500 - 1545	6 minutes
				1546 - 1630	5 minutes

2.2) SATURDAY AND GOOD FRIDAY SCHEDULE REQUIREMENTS & PINCHPOINTS

North Finchley to Tottenham Court Road Station			Tottenham Court Road Station to North Finchley		
First departure no later than 0525.			First departure no later than 0610.		
0520 - 0555	Every 15 minutes		0605 - 0635	Every 15 minutes	
0556 - 0655	Every 12 minutes		0636 - 0735	Every 12 minutes	
0656 - 0755	Every 10 minutes		0736 - 0835	Every 10 minutes	
0756 - 0900	Every 7-8 minutes (8 buses per hour)		0836 - 0935	Every 7-8 minutes (8 buses per hour)	
0901 - 1900	Every 6 minutes		0936 - 1930	Every 6 minutes	
1901 - 2100	Every 7-8 minutes (8 buses per hour)		1931 - 2200	Every 7-8 minutes (8 buses per hour)	
2101 - 2315	Every 10 minutes		2201 - 0005	Every 10 minutes	
Last departure no earlier than 2310.			Last departure no earlier than 2400.		
Pinchpoints					
Kentish Town Station	0935 - 1100	6 minutes	Highgate Station, Woodman	0930 - 1005	8 minutes
				1006 - 1100	6 minutes

2) SCHEDULE REQUIREMENTS & PINCHPOINTS - continued

2.3) SUNDAY AND PUBLIC HOLIDAY SCHEDULE REQUIREMENTS & PINCHPOINTS

North Finchley to Tottenham Court Road Station			Tottenham Court Road Station to North Finchley		
First departure no later than 0525.			First departure no later than 0610.		
0520 - 0755	Every 15 minutes		0605 - 0835	Every 15 minutes	
0756 - 0855	Every 12 minutes		0836 - 0935	Every 12 minutes	
0856 - 0955	Every 7-8 minutes (8 buses per hour)		0936 - 1035	Every 7-8 minutes (8 buses per hour)	
0956 - 1900	Every 6-7 minutes (9 buses per hour)		1036 - 1930	Every 6-7 minutes (9 buses per hour)	
1901 - 1930	Every 7-8 minutes (8 buses per hour)		1931 - 2030	Every 7-8 minutes (8 buses per hour)	
1931 - 2315	Every 10 minutes		2031 - 0005	Every 10 minutes	
Last departure no earlier than 2310.			Last departure no earlier than 2400.		
Pinchpoints					
Kentish Town Station	1005 - 1030	8 minutes	Highgate Station, Woodman	1005 - 1105	8 minutes
	1031 - 1130	7 minutes		1106 - 1130	7 minutes

2.4) BOXING DAY SCHEDULE REQUIREMENTS & PINCHPOINTS

North Finchley to Tottenham Court Road Station			Tottenham Court Road Station to North Finchley		
First departure no later than 0755.			First departure no later than 0835.		
0750 - 0855	Every 12 minutes		0830 - 0935	Every 12 minutes	
0856 - 0955	Every 7-8 minutes (8 buses per hour)		0936 - 1035	Every 7-8 minutes (8 buses per hour)	
0956 - 1900	Every 6-7 minutes (9 buses per hour)		1036 - 1930	Every 6-7 minutes (9 buses per hour)	
1901 - 1930	Every 7-8 minutes (8 buses per hour)		1931 - 2030	Every 7-8 minutes (8 buses per hour)	
1931 - 2315	Every 10 minutes		2031 - 0005	Every 10 minutes	
Last departure no earlier than 2310.			Last departure no earlier than 2400.		
Pinchpoints					
Kentish Town Station	1005 - 1030	8 minutes	Highgate Station, Woodman	1005 - 1105	8 minutes
	1031 - 1130	7 minutes		1106 - 1130	7 minutes

2) SCHEDULE REQUIREMENTS & PINCHPOINTS – continued

2.5) SUNDAY NIGHTS/MONDAY MORNINGS TO THURSDAY NIGHTS/FRIDAY MORNINGS

North Finchley to Tottenham Court Road Station		Tottenham Court Road Station to North Finchley	
First departure no later than 2330.		First departure no later than 0015.	
2325 - 0520	Every 15 minutes	0010 - 0605	Every 15 minutes
Last departure no earlier than 0515.		Last departure no earlier than 0600.	

2.6) FRIDAY NIGHTS/SATURDAYS MORNINGS TO SATURDAYS NIGHTS/SUNDAYS MORNINGS

North Finchley to Tottenham Court Road Station		Tottenham Court Road Station to North Finchley	
First departure no later than 2325.		First departure no later than 0015.	
2320 - 0415	Every 12 minutes	0010 - 0515	Every 12 minutes
0416 - 0520	Every 15 minutes	0516 - 0605	Every 15 minutes
Last departure no earlier than 0515.		Last departure no earlier than 0600.	

Tenderers must identify the cost of the Nightly element of this service separately.

3) QSI POINTS & MILEAGE

It is intended Route No. 134 will have 128 surveys per quarter at the following locations:

QSI POINTS	
Towards Tottenham Court Road Station	Towards North Finchley
North Finchley	Tottenham Court Road
Friern Barnet	Camden Town
Muswell Hill	Archway
Camden Town	Muswell Hill
MILEAGE: See Attached iBus Sheets	

\$ This location observed simultaneously in both directions - counted as two surveys.

It is unlikely that the minimum number of QSI surveys for Threshold measurement will be conducted on Route No. N134 at present. However, this may change at a later date when a Threshold figure may be published.

4) OPERATIONAL CONSIDERATIONS

- 4.1) Route No. 134 & N134 can suffer unpredictable traffic delays in the Camden Town, Euston and Bloomsbury areas.
- 4.2) Football matches and events at Emirates Stadium can also cause traffic congestion in the Archway Station/Junction Road area.
- 4.3) Signalling enhancements on the London Underground Northern Line are due to be completed in 2012. The effect of these changes on loadings will be monitored.
- 4.4) Crossrail will connect the City, Canary Wharf, the West End and Heathrow Airport to commuter areas east and west of the capital. Major construction of the railway began in 2010, with services expected to commence in 2018. The construction impacts of Crossrail could affect Route No. 134 & N134 and it is anticipated that some passenger demand for Route No. 134 & N134 would shift to this line when it opens. Route No. 134 & N134 will be reviewed closer to the opening date.
- 4.5) As part of the Crossrail redevelopment a link road has been built between Charing Cross Road and St Giles High Street. Route No. 134 will be diverted via the link road when Crossrail work starts at the junction of Charing Cross Road and Andrew Borde Street. It will stand at Earnshaw Street turning left into New Oxford Street, instead of its current location on St Giles High Street.
- 4.6) The 2012 Olympic Games open on Friday 27th July and close on Sunday 12th August. The 2012 Paralympic Games start on Wednesday 29th August and close on Sunday 9th September. The Games will result in additional passenger demand across the network, requiring additional capacity on some routes. There will also be a number of road closures in the event areas resulting in route diversions. Operators should be aware there will be implications to them during this time. Full details and any extra resource required will be negotiated with the operator at a later date.

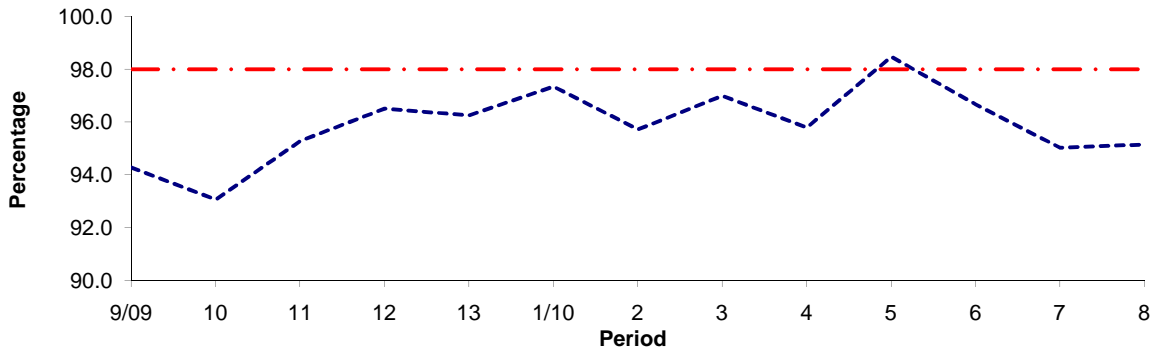
5) CURRENT PERFORMANCE, ROUTE RECORD & IBUS MILEAGE

- 5.1) CURRENT PERFORMANCE
As per current print out.
- 5.2) ROUTE RECORD
As per Busnet Printout.
- 5.3) IBUS MILEAGE
As per current print out.

PART B - PERFORMANCE STATISTICS

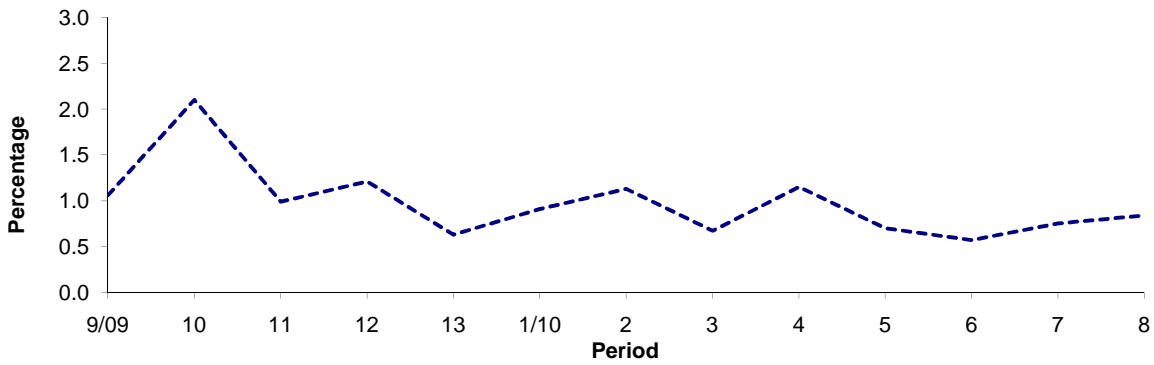
Route 134

Mileage Operated



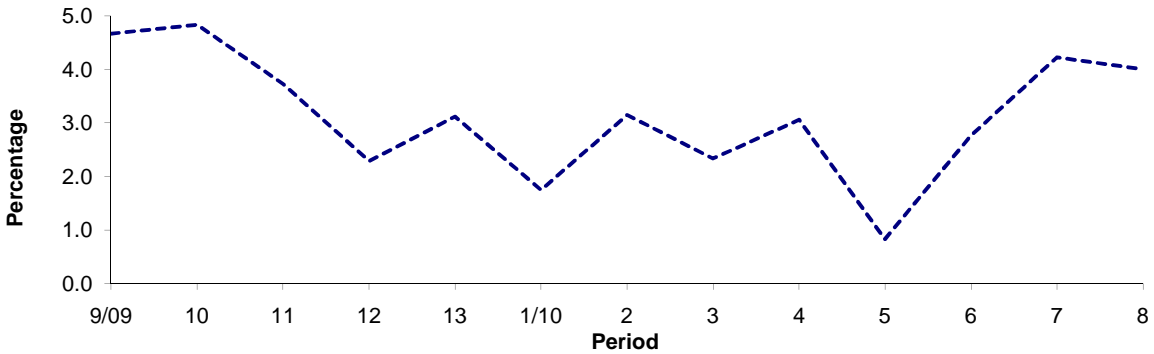
Period	9/09	10	11	12	13	1/10	2	3	4	5	6	7	8
2009/2010	94.27	93.06	95.28	96.50	96.25	97.34	95.72	96.99	95.79	98.47	96.66	95.02	95.15
Min Standard	98.00	98.00	98.00	98.00	98.00	98.00	98.00	98.00	98.00	98.00	98.00	98.00	98.00

Deductible Mileage



Period	9/09	10	11	12	13	1/10	2	3	4	5	6	7	8
2009/2010	1.06	2.10	0.99	1.21	0.63	0.91	1.13	0.67	1.15	0.70	0.57	0.75	0.84

Non Deductible Mileage

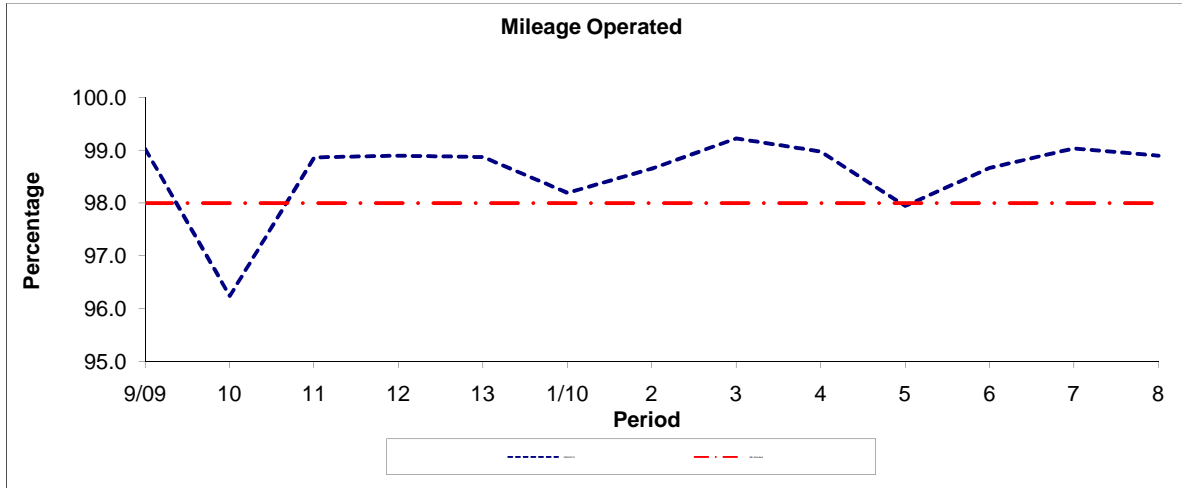


Period	9/09	10	11	12	13	1/10	2	3	4	5	6	7	8
2009/2010	4.67	4.84	3.73	2.29	3.12	1.75	3.15	2.34	3.06	0.83	2.77	4.23	4.01

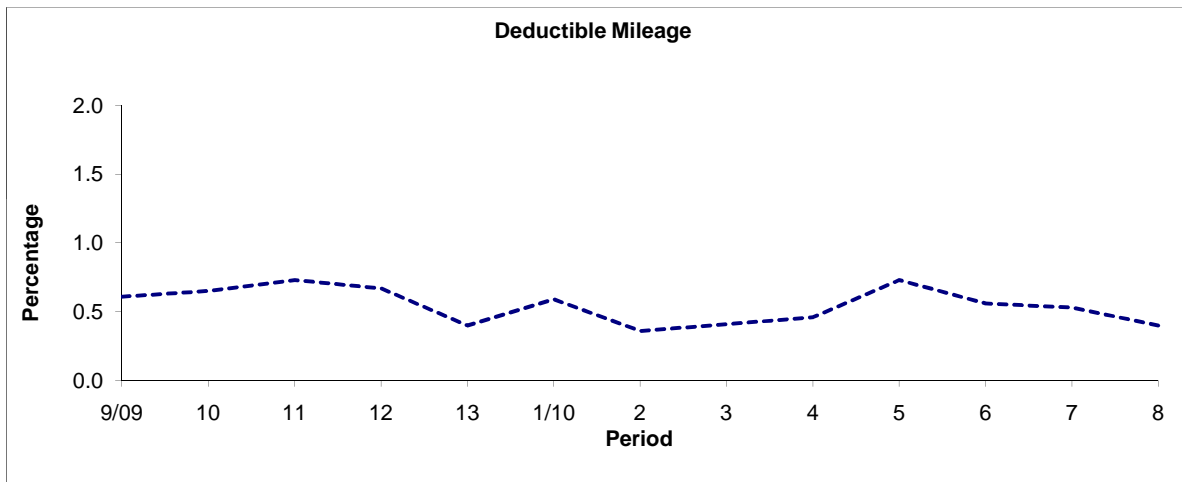
Note : Mileage is based on 4 weeks data

PART B - PERFORMANCE STATISTICS

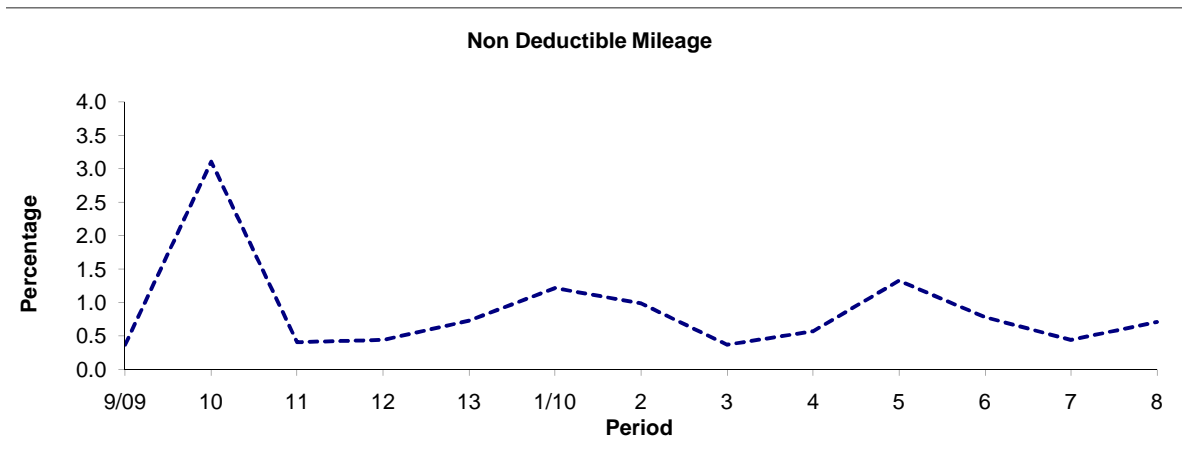
Route N134



Period	9/09	10	11	12	13	1/10	2	3	4	5	6	7	8
2009/2010	99.02	96.24	98.86	98.89	98.87	98.19	98.65	99.22	98.97	97.94	98.66	99.03	98.89
Min Standard	98.00	98.00	98.00	98.00	98.00	98.00	98.00	98.00	98.00	98.00	98.00	98.00	98.00



Period	9/09	10	11	12	13	1/10	2	3	4	5	6	7	8
2009/2010	0.61	0.65	0.73	0.67	0.40	0.59	0.36	0.41	0.46	0.73	0.56	0.53	0.40

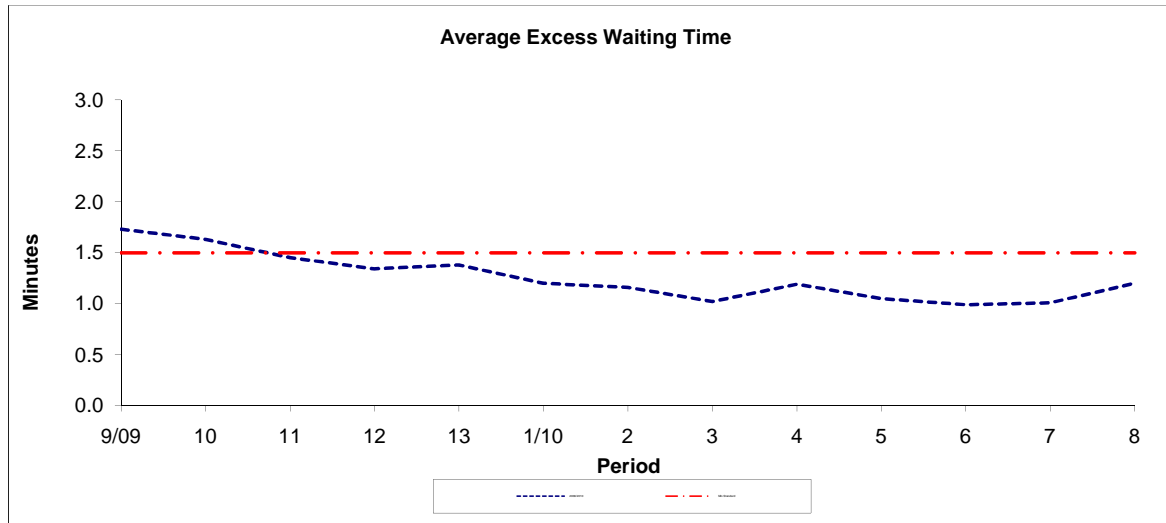


Period	9/09	10	11	12	13	1/10	2	3	4	5	6	7	8
2009/2010	0.37	3.11	0.41	0.44	0.73	1.22	0.99	0.37	0.57	1.33	0.78	0.44	0.71

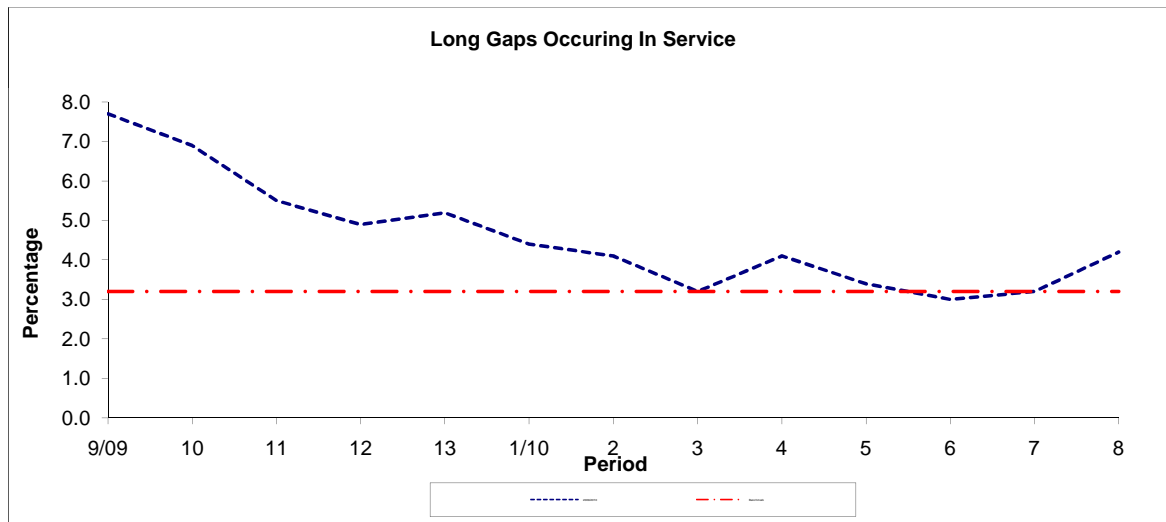
Note : Mileage is based on 4 weeks data

PART B - PERFORMANCE STATISTICS

Route 134



Period	9/09	10	11	12	13	1/10	2	3	4	5	6	7	8
2009/2010	1.73	1.63	1.45	1.34	1.38	1.20	1.16	1.02	1.19	1.05	0.99	1.01	1.20
Min Standard	1.50	1.50	1.50	1.50	1.50	1.50	1.50	1.50	1.50	1.50	1.50	1.50	1.50

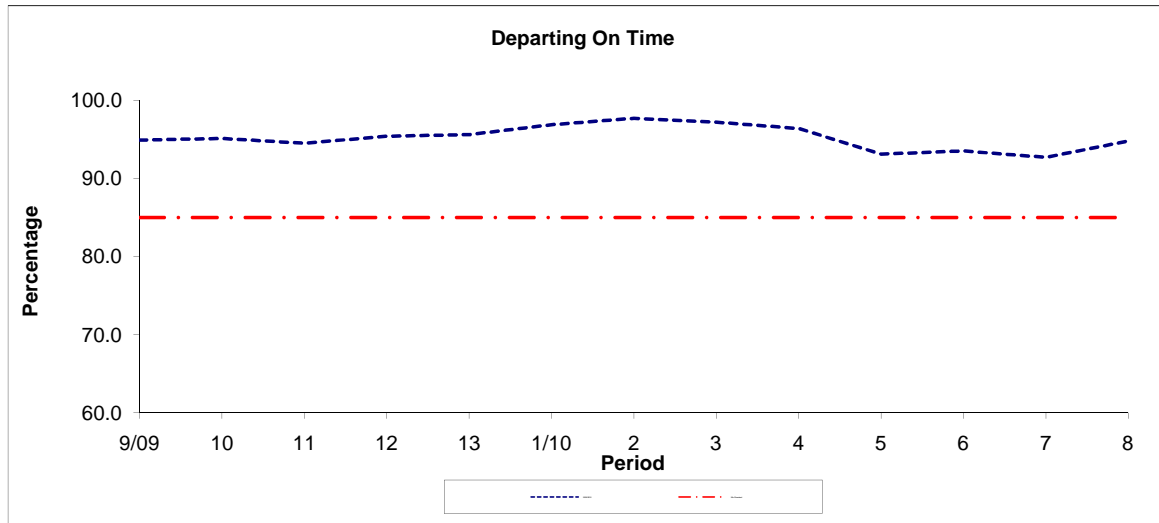


Period	9/09	10	11	12	13	1/10	2	3	4	5	6	7	8
2009/2010	7.70	6.90	5.50	4.90	5.20	4.40	4.10	3.20	4.10	3.40	3.00	3.20	4.20
Benchmark	3.20	3.20	3.20	3.20	3.20	3.20	3.20	3.20	3.20	3.20	3.20	3.20	3.20

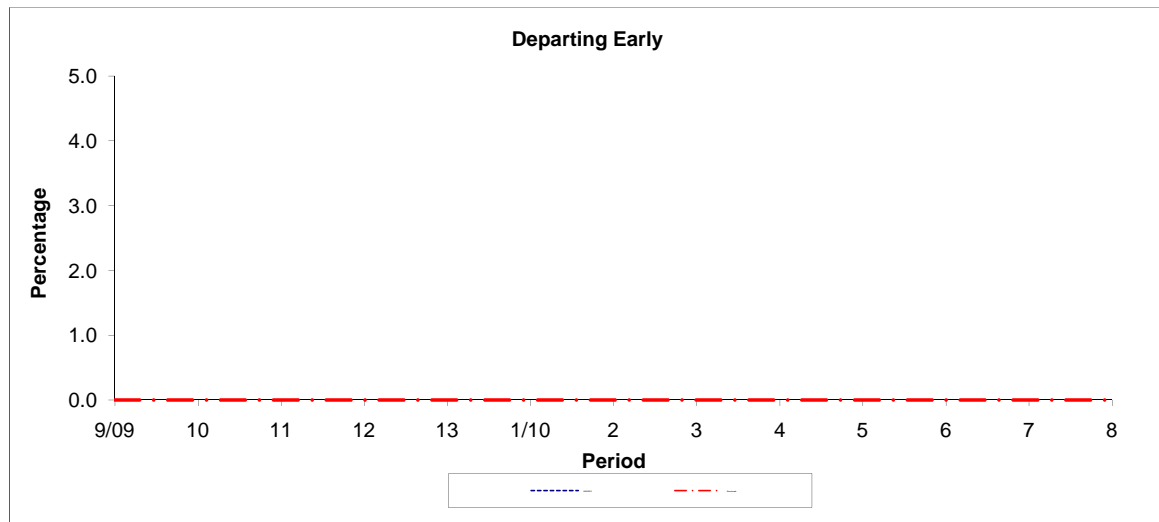
Note : Reliability is based on 12 weeks rolling data

PART B - PERFORMANCE STATISTICS

Route N134



Period	9/09	10	11	12	13	1/10	2	3	4	5	6	7	8
2009/2010	94.90	95.10	94.50	95.40	95.60	96.90	97.70	97.20	96.40	93.10	93.50	92.70	94.80
Min Standard	85.00	85.00	85.00	85.00	85.00	85.00	85.00	85.00	85.00	85.00	85.00	85.00	85.00



Period	9/09	10	11	12	13	1/10	2	3	4	5	6	7	8
2009/2010													
Benchmark	0.00	0.00	0.00	0.00	0.00	0.00	0.00	0.00	0.00	0.00	0.00	0.00	0.00

Note : Reliability is based on 12 weeks rolling data

LONDON BUSES - ROUTE DESCRIPTION

ROUTE 134: North Finchley - Tottenham Court Road Station (24 hour service)

Date of Structural Change: 4 February 2012.

Date of Service Change: 4 February 2012.

Reason for Issue: New Tender.

STREETS TRAVERSED

Towards Tottenham Court Road Station: North Finchley High Road, Woodhouse Road, Colney Hatch Lane, Muswell Hill Broadway, Muswell Hill Road, Archway Road, Junction Road, Fortress Road, Kentish Town Road, Camden Street, Camden Road, Bayham Street, Crowndale Road, Hampstead Road, Harrington Square, Hampstead Road, Euston Road, Gower Street, Bedford Square, Bloomsbury Street, Shaftesbury Avenue, High Holborn, St Giles High Street.

Towards North Finchley: Tottenham Court Road, Hampstead Road, Camden High Street, Kentish Town Road, Fortress Road, Junction Road, Highgate Hill, Tollhouse Way, Archway Road, Muswell Hill Road, Muswell Hill Broadway, Colney Hatch Lane, Woodhouse Road, Kingsway, Ballards Lane.

STANDING AND TURNING POINTS

NORTH FINCHLEY HIGH ROAD

Public offside stand for 4 buses on west side of High Road outside Tally Ho Public House commencing 20.7 metres south of lamp standard No. 151 and extending 44 metres north. Buses proceed from Ballards Lane via North Finchley High Road to stand, departing to North Finchley High Road. Set down in Ballards Lane, Stop Z2 and pick up in North Finchley High Road, Stop E.

AVAILABILITY:	At any time.
OPERATING RESTRICTIONS:	No more than 3 buses on Route 134 should be scheduled to stand at any one time.
MEAL RELIEFS:	No meal relief vehicles to stand at any time.
FERRY VEHICLES:	No ferry vehicles to park on stand at any time.
DISPLAY:	North Finchley.
OTHER INFORMATION:	Toilet facilities available 24hrs.

FRIERN BARNET, WOODHOUSE ROAD (from TOTTENHAM COURT ROAD STATION)

Public stand for 2 buses on south side of Woodhouse Road, commencing at rear of bus stop 9945 and extending 24 metres east.

Buses proceed from Woodhouse Road direct to stand, departing via Woodhouse Road and Circumnavigate Roundabout At Junction With Summers Lane to Woodhouse Road. Set down in Woodhouse Road, at Stop FL and pick up in Woodhouse Road, at Stop FW.

AVAILABILITY:	At any time.
OPERATING RESTRICTIONS:	Unscheduled curtailments only.
MEAL RELIEFS:	No meal relief vehicles to stand at any time.
FERRY VEHICLES:	No ferry vehicles to park on stand at any time.
DISPLAY:	Friern Barnet.

MUSWELL HILL BROADWAY

From North Finchley.

Buses proceed from Muswell Hill Broadway departing to Muswell Hill Broadway. Set down in Muswell Hill Broadway, at Stop B and pick up in Muswell Hill Broadway, at Stop A.

From Tottenham Court Road Station.

Buses proceed from Muswell Hill Broadway departing to Muswell Hill Broadway. Set down in Muswell Hill Broadway, at Stop F and pick up in Muswell Hill Broadway, at Stop E.

AVAILABILITY:	At any time.
OPERATING RESTRICTIONS:	Turning Point Only - Buses must not stand
DISPLAY:	Muswell Hill.

ARCHWAY STATION, MACDONALD ROAD

Private stand for up to 16 buses in Bus Parking Area between east side of MacDonald Road and north side of Vorley Road.

From North Finchley.

Buses proceed from St John's Way via Highgate Hill, Macdonald Road and Bus Parking Area to stand, departing via Bus Parking Area and Vorley Road to Junction Road. Set down in Macdonald Road, at Alighting Point and pick up in Junction Road, at Stop V.

From Tottenham Court Road Station.

Buses proceed from Junction Road via Highgate Hill, Macdonald Road and Bus Parking Area to stand, departing via Bus Parking Area, Vorley Road, Junction Road, Highgate Hill, Tollhouse Way, Archway Road and St John's Way to Junction Road. Set down in Junction Road, at Stop V and pick up in Junction Road, at Stop W.

AVAILABILITY:	At any time.
OPERATING RESTRICTIONS:	Unscheduled curtailments only.
MEAL RELIEFS:	No meal relief vehicles to stand at any time.
FERRY VEHICLES:	No ferry vehicles to park on stand at any time.
DISPLAY:	Archway.

KENTISH TOWN STATION (from TOTTENHAM COURT ROAD STATION)

Buses proceed from Kentish Town Road via Highgate Road, Fortress Walk and Fortress Road departing to Kentish Town Road. Set down in Kentish Town Road, at Stop KF and pick up in Kentish Town Road, at Stop KE.

AVAILABILITY:	At any time.
OPERATING RESTRICTIONS:	Turning Point Only - Buses must not stand
DISPLAY:	Kentish Town.

CAMDEN TOWN, CAMDEN GARDENS (from TOTTENHAM COURT ROAD STATION)

Public stand for three buses on north side of Camden Gardens, commencing 3 metres west of Camden Street and extending 31 metres west to a point 3 metres east of Kentish Town Road.

Buses proceed from Kentish Town Road via Camden Gardens to stand, departing via Camden Gardens and Camden Street to Camden Road. Set down in Kentish Town Road, at Stop L and pick up in Camden Road, at Stop S.

AVAILABILITY:	At any time.
OPERATING RESTRICTIONS:	Unscheduled curtailments only.
MEAL RELIEFS:	No meal relief vehicles to stand at any time.
FERRY VEHICLES:	No ferry vehicles to park on stand at any time.
DISPLAY:	Camden Town.

CAMDEN TOWN, BAYHAM STREET (from North Finchley)

Public stand on east side of Bayham Street, commencing opposite the party wall of "The Laurel Tree"/AFCO 95-111 and extending 26 metres south.

Buses proceed from Camden Road via Bayham Street to stand, departing via Bayham Street and Pratt Street to Camden High Street. Set down in Camden Road, at Stop S and pick up in Camden High Street, at Stop Y.

AVAILABILITY:	At any time.
OPERATING RESTRICTIONS:	Unscheduled curtailments only.
MEAL RELIEFS:	No meal relief vehicles to stand at any time.
FERRY VEHICLES:	No ferry vehicles to park on stand at any time.
DISPLAY:	Camden Town.

MORNINGTON CRESCENT STATION (from North Finchley)

Public stand for two buses on east side (offside) of Hampstead Road, commencing 49 metres south of Harrington Square (north arm) and extending 26 metres south. Buses proceed from Harrington Square (East And South Sides) via Hampstead Road to stand, departing to Hampstead Road. Set down in Harrington Square, at Stop C and pick up in Hampstead Road, at Stop A.

AVAILABILITY:	At any time.
OPERATING RESTRICTIONS:	Unscheduled curtailments only.
MEAL RELIEFS:	No meal relief vehicles to stand at any time.
FERRY VEHICLES:	No ferry vehicles to park on stand at any time.
DISPLAY:	Mornington Crescent.

WARREN STREET STATION, UNIVERSITY COLLEGE HOSPITAL (from North Finchley)

Public stand for four buses on nearside of slip road on south side of Euston Road between Tottenham Court Road and Gower Street, commencing 5 metres west of a point opposite lamp standard no. 301 extending 40 metres west. Buses proceed from Hampstead Road via Euston Road to stand, departing via Euston Road, Gower Street and Grafton Way to Tottenham Court Road. Set down in Hampstead Road, at Stop R and pick up in Tottenham Court Road, at Stop X.

AVAILABILITY:	At any time.
OPERATING RESTRICTIONS:	Unscheduled curtailments only
MEAL RELIEFS:	No meal relief vehicles to stand at any time.
FERRY VEHICLES:	No ferry vehicles to park on stand at any time.
DISPLAY:	Warren Street.

TOTTENHAM COURT ROAD STN, ST GILES HIGH STREET

Public stand for four buses on east side (offside) of St. Giles High Street, commencing at a point 15 metres south of the junction with New Oxford Street under Centrepont Building and extending 46 metres south.

Buses proceed from St Giles High Street direct to stand, departing via St Giles High Street and New Oxford Street to Tottenham Court Road. Set down in St Giles High Street, at Stop T and pick up in Tottenham Court Road, at Stop C.

AVAILABILITY:	At any time.
OPERATING RESTRICTIONS:	No more than 2 buses on Route 134 should be scheduled to stand at any one time.
MEAL RELIEFS:	No meal relief vehicles to stand at any time.
FERRY VEHICLES:	No ferry vehicles to park on stand at any time.
DISPLAY:	Tottenham Court Road.

Transport for London - Live Mileage List

Route 134

Service change 22386

Date 16 November 2009

OUT DIRECTION				
Timing Point				
Code	Stop Number	Stop Name	Metres	Miles
NTFYHR S	NTFYHR S	NORTH FINCHLEY, HIGH ROAD		
NTFYHR	28900	North Finchley Bus Station	0	0.00
	9934	North Finchley High Road	153	0.10
	9936	Grove Road	331	0.21
	9938	Woodhouse College	242	0.15
	9940	Lewes Road	211	0.13
FBARTH	9944	Colney Hatch Lane	324	0.20
	19610	Friern Barnet Road	217	0.13
	20146	Hillside Avenue	196	0.12
CHLNTS	19541	North Circular Road	485	0.30
	7520	Cromwell Road	315	0.20
	19607	Pembroke Road / St Peters Church	314	0.20
	1307	Wilton Road	311	0.19
	BP083	Alexandra Park Road	458	0.28
	1145	Muswell Hill	541	0.34
MHILBYS	1148	Queens Avenue	194	0.12
	19605	Fortis Green Road	297	0.18
	9443	Cranley Gardens	199	0.12
	BP2597	Cranley Gardens	168	0.10
	19604	Onslow Gardens	249	0.15
	BP3116	Highgate Wood	263	0.16
	1143	Wood Lane / Highgate Station	311	0.19
HIGHSN	9431	Highgate Station	203	0.13
	10860	Southwood Avenue	282	0.18
	1909	Northwood Road	277	0.17
	9863	Langdon Park Road	234	0.15
	9861	Waterlow Road	370	0.23
	67	Whittington Hospital	186	0.12
ARCHJR	33985	Archway Station	344	0.21
JNRDPG	11419	Pemberton Gardens	329	0.20
	11417	Monnery Road	267	0.17
	4717	Tufnell Park Station	255	0.16
	11413	Lady Somerset Road	332	0.21
	11409	Fortess Walk	262	0.16
KENTSN	1078	Kentish Town Station	263	0.16
	11392	Kentish Town Post Office	223	0.14
	669	Kentish Town Road/St. Andrew's Church	260	0.16
	2675	Royal College Street	193	0.12
	33096	Camden Gardens	272	0.17
CDTNSN	324	Camden Town Station	308	0.19
	33260	Pratt Street	353	0.22
MNCRSN	33291	Mornington Crescent Station	547	0.34
	1277	Silverdale	365	0.23
	1275	Robert Street	217	0.13
WARRST	33549	Warren Street Station / Euston Road	346	0.21
	29674	University College Hospital	459	0.29
	BP2167	Torrington Place	125	0.08
	29676	Chenies Street	229	0.14
	29735	Great Russell Street	379	0.24
	BP1722	New Oxford Street	233	0.14
TCTRSG	BP5282	Tottenham Court Road Station	309	0.19
TCTRSG S	TCTRSG S	Tottenham Court Road Stn, St Giles High Stre	0	0.00
TOTAL ROUTE MILEAGE - OUT DIRECTION			14201 metres	8.82 miles

BACK DIRECTION				
Timing Point				
Code	Stop Number	Stop Name	Metres	Miles
TCTRS S	TCTRS S	Tottenham Court Road Stn, St Giles High Street		
TCTRTC	166	Tottenham Court Road Station	0	0.00
	BP2028	Percy Street	215	0.13
	660	Goodge Street Station	288	0.18
WARRST	8348	Warren Street Station	375	0.23
	25069	Drummond Street	232	0.14
	1276	Robert Street	146	0.09
	1278	Silverdale	383	0.24
MNCRSN	14639	Mornington Crescent Station	367	0.23
	BP765	Camden High Street	255	0.16
	34182	Camden Town / Parkway	234	0.15
CDTNSN	20407	Camden Town Station	231	0.14
	2674	Hawley Road	244	0.15
	668	Prince Of Wales Road	443	0.28
	11391	Kentish Town Post Office	306	0.19
KENTSN	1077	Kentish Town Station	301	0.19
	11408	Fortess Walk	236	0.15
	11412	Lady Somerset Road	187	0.12
	79	Tufnell Park Station	150	0.09
	BP1345	Junction Road	194	0.12
	11416	Monnery Road	203	0.13
JNRDPG	11420	Pemberton Gardens	272	0.17
	12619	Archway Station / Junction Road	338	0.21
ARCHHH	36803	Archway Station / Highgate Hill	115	0.07
	33982	Archway Road / Tollhouse Road	195	0.12
	9862	Waterlow Road	190	0.12
	9864	Langdon Park Road	441	0.27
	1908	Northwood Road	276	0.17
HIGHSN	9432	Highgate Station	389	0.24
	1142	Wood Lane / Highgate Station	270	0.17
	BP3230	Highgate Wood	335	0.21
	19603	Onslow Gardens	302	0.19
	9444	Cranley Gardens	256	0.16
	15599	Fortis Green Road	326	0.20
MHILBYS	1147	Muswell Hill	267	0.17
	1146	Queens Avenue	136	0.08
	80010	Meadow Drive	278	0.17
	1910	Alexandra Park Road	255	0.16
	1306	Wilton Road	362	0.22
	19606	Pembroke Road / St Peter's Church	347	0.22
	7521	Hampden Road	211	0.13
CHLNTS	19608	North Circular Road	468	0.29
	29919	Firs Avenue	180	0.11
	20145	Hillside Avenue	377	0.23
	19609	Friern Barnet Road	181	0.11
FBARTH	9945	Colney Hatch Lane	108	0.07
	9941	Summers Lane	281	0.17
	9939	Crescent Way	193	0.12
	9937	Woodhouse College	176	0.11
	9935	North Finchley	342	0.21
	9933	North Finchley High Road	173	0.11
NTFYHR	BP3223	Tally Ho Corner	336	0.21
NTFYHR S	NTFYHR S	NORTH FINCHLEY, HIGH ROAD	0	0.00
TOTAL ROUTE MILEAGE - BACK DIRECTION			13366	8.31
			metres	miles