

# Planning & Development Forum

## 15th March 2010

Sprunt Architect

## **A. The site**

## **B. Phasing**

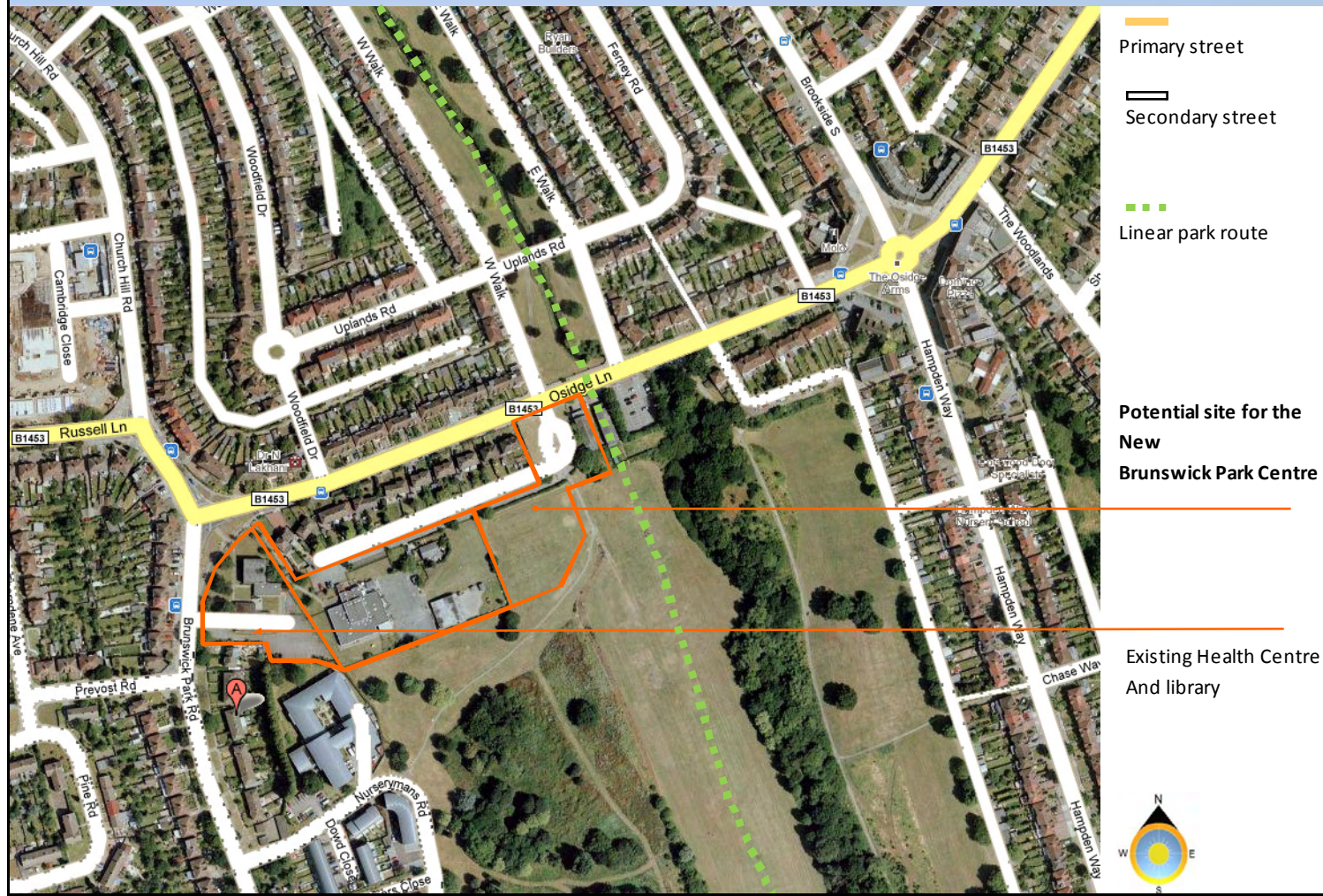
## **C. Design**

- **Concept approach**
- **The new centre**
- **Landscape and Access**
- **Appearance**

# A. The site

## Brunswick Park Centre

3





# A .The site

## Brunswick Park Centre

4







# A .The site

## Brunswick Park Centre

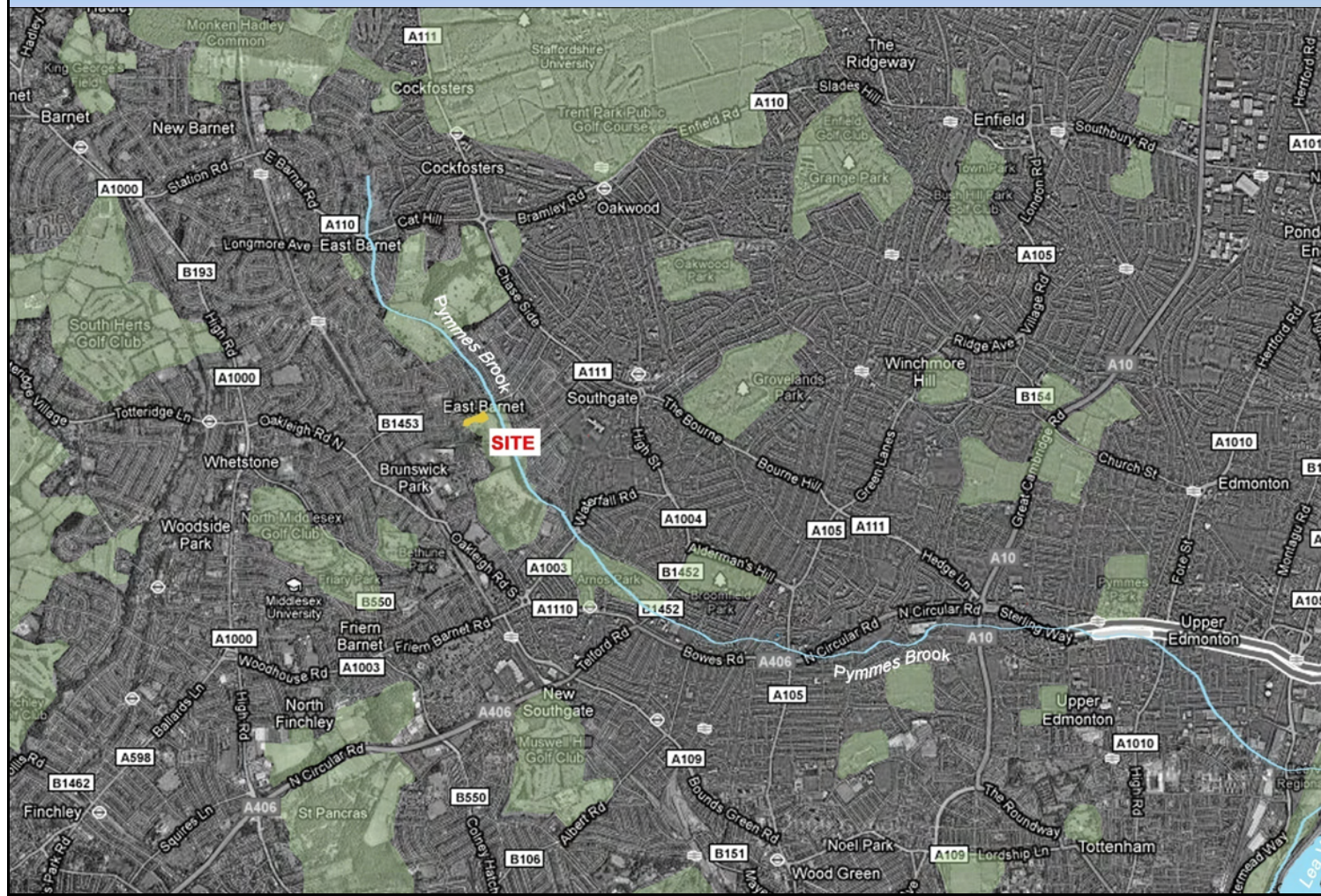
6



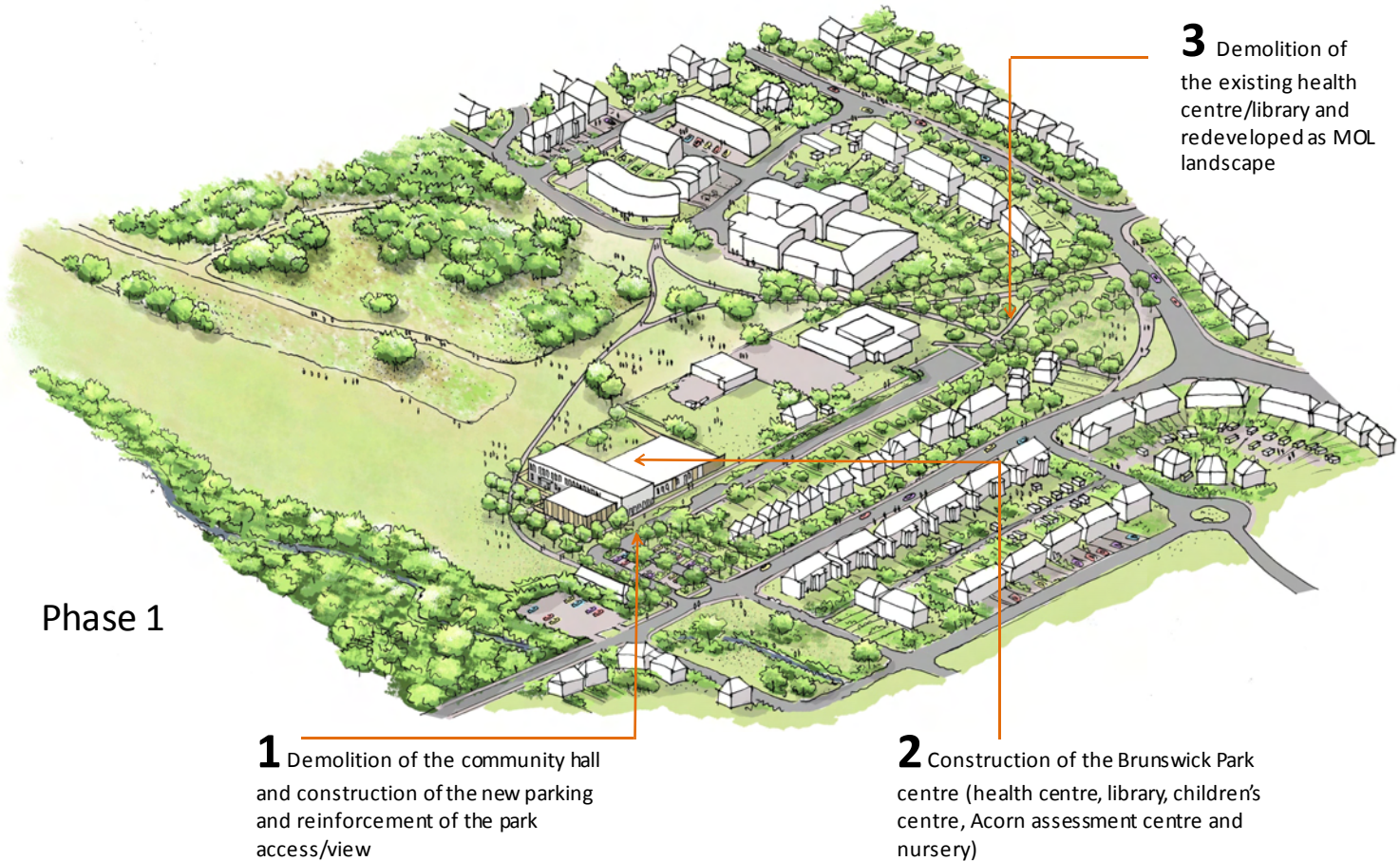


# Brunswick Park Centre

7



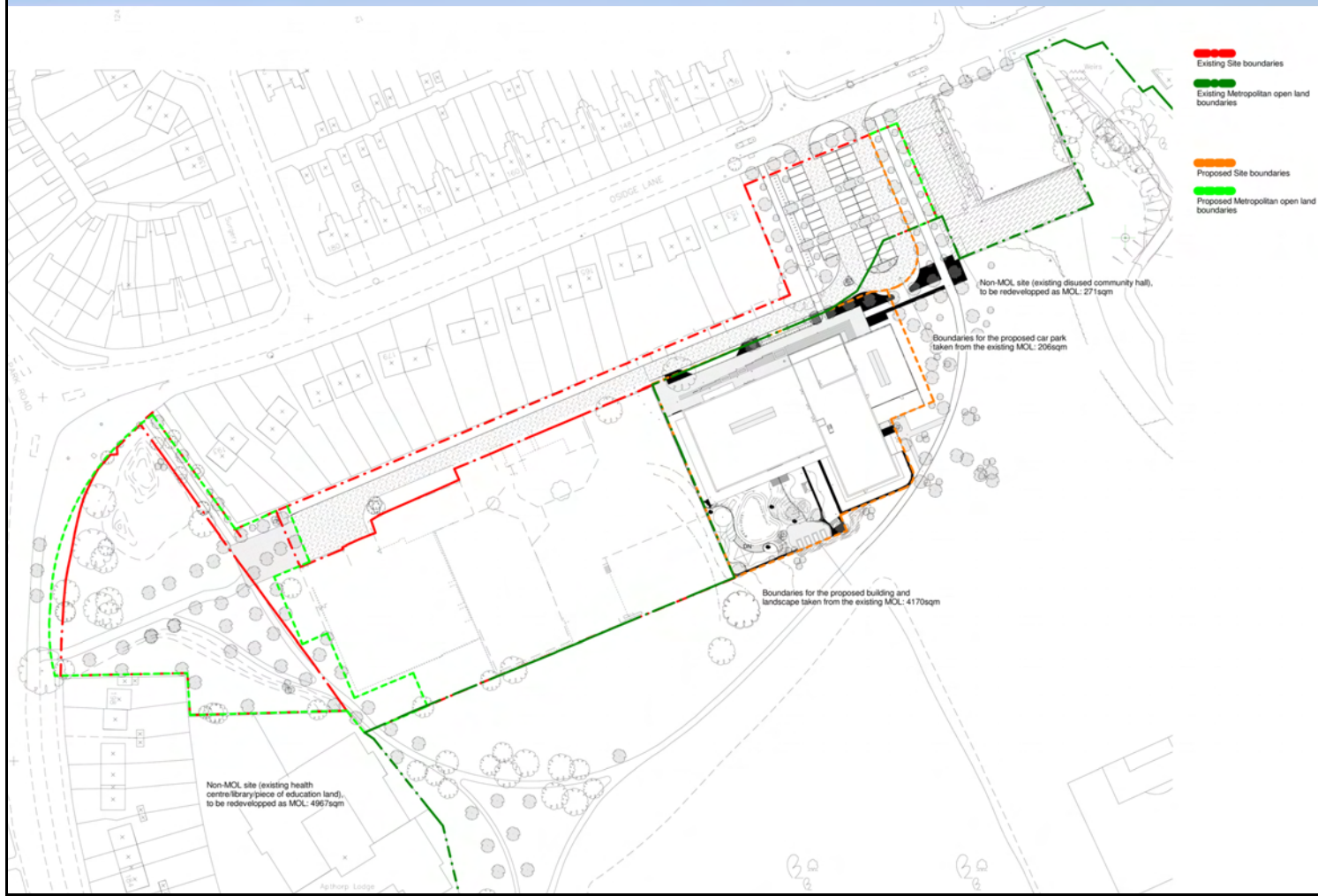


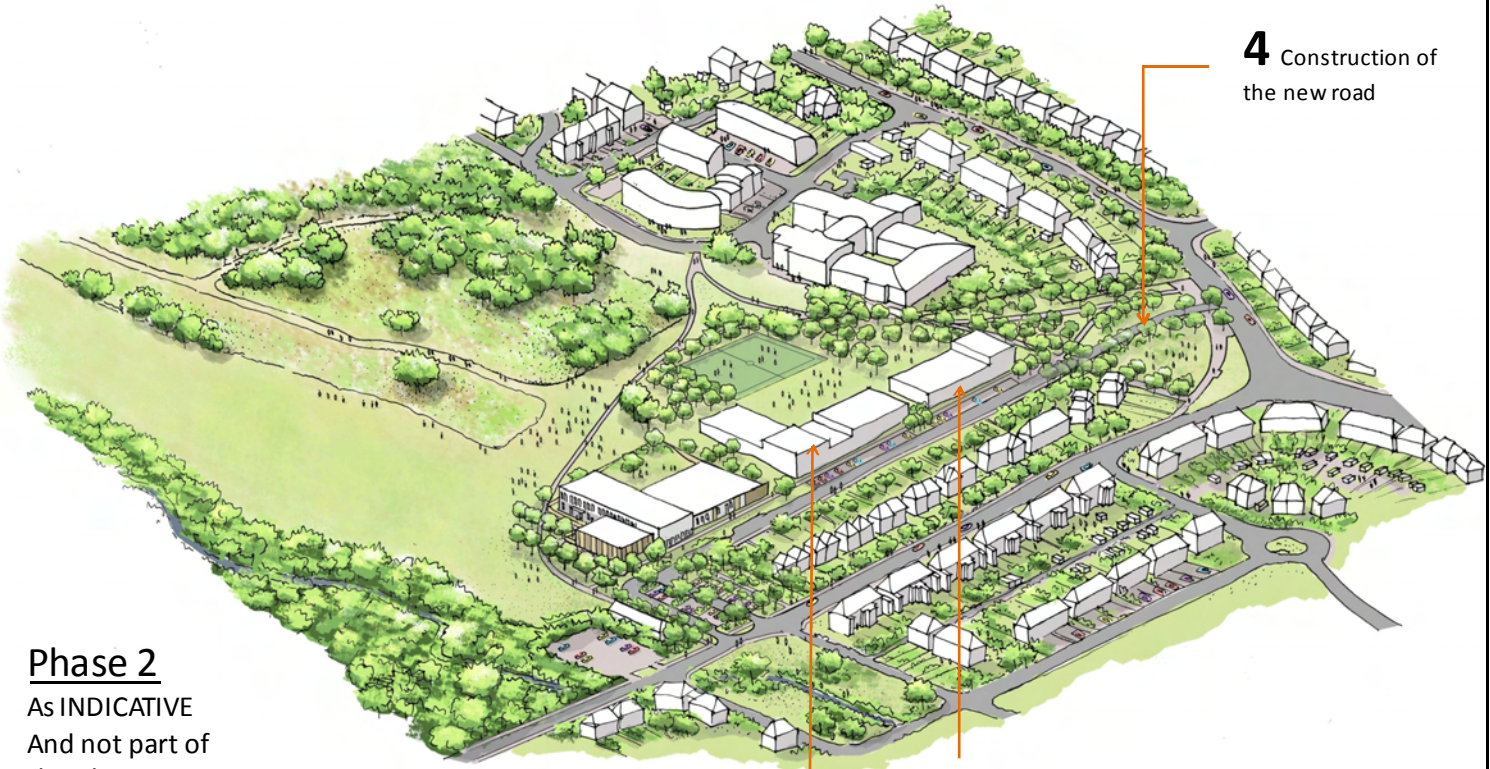


# B . Phasing

## Brunswick Park Centre

9





## Phase 2

As INDICATIVE  
And not part of  
the planning  
submission

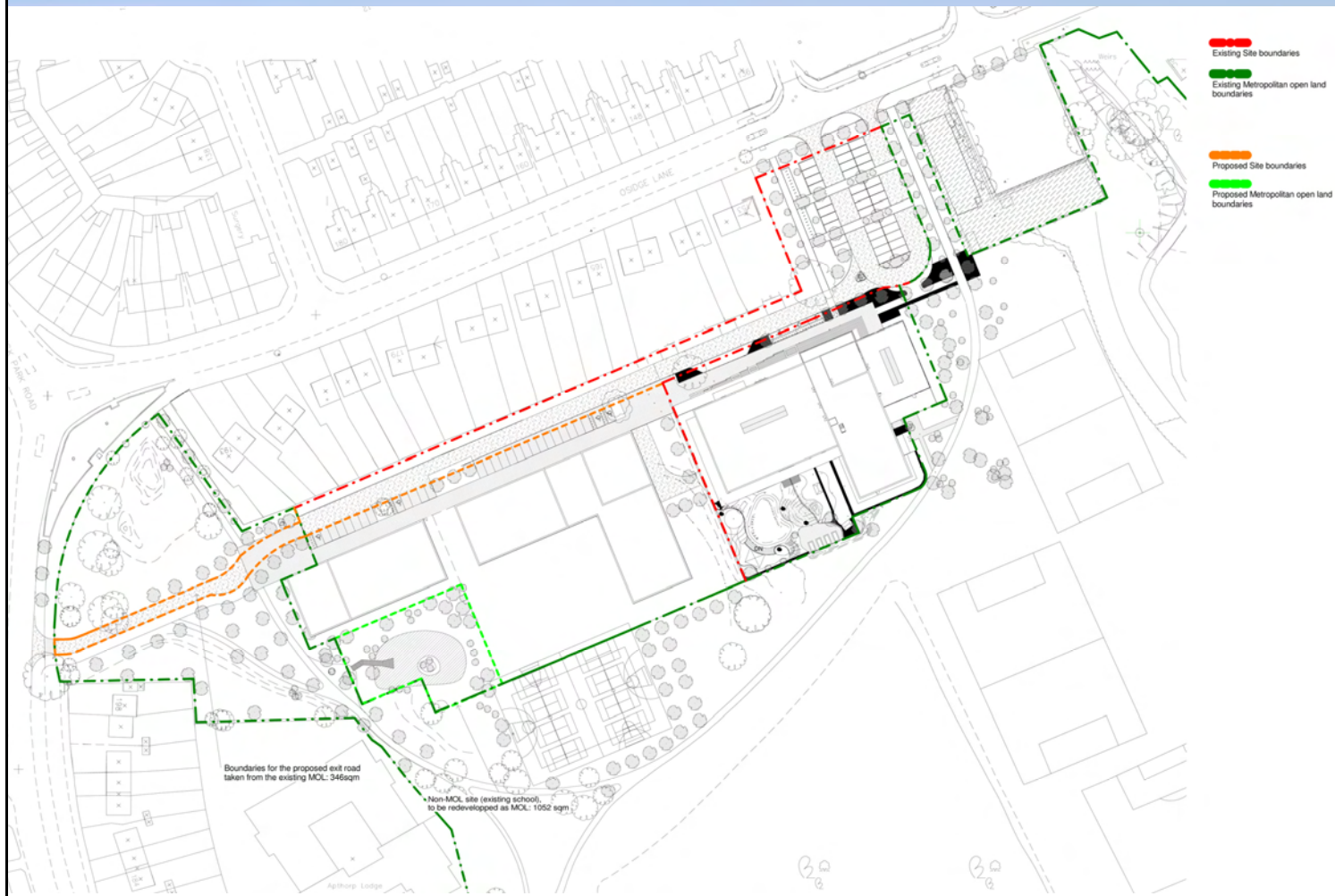
**1** Construction of the new 2FE  
school

**2** Demolition of the existing 1FE school,  
Nursery, caretaker house.

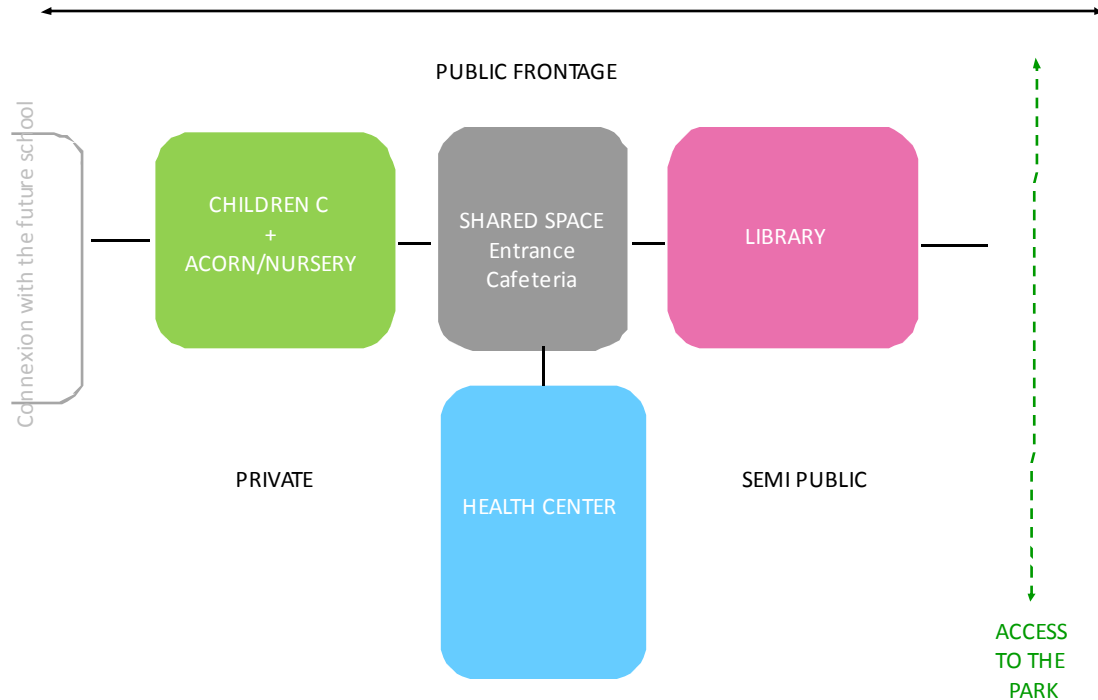
**3** Construction of the Gym /Swimming pool

**4** Construction of  
the new road

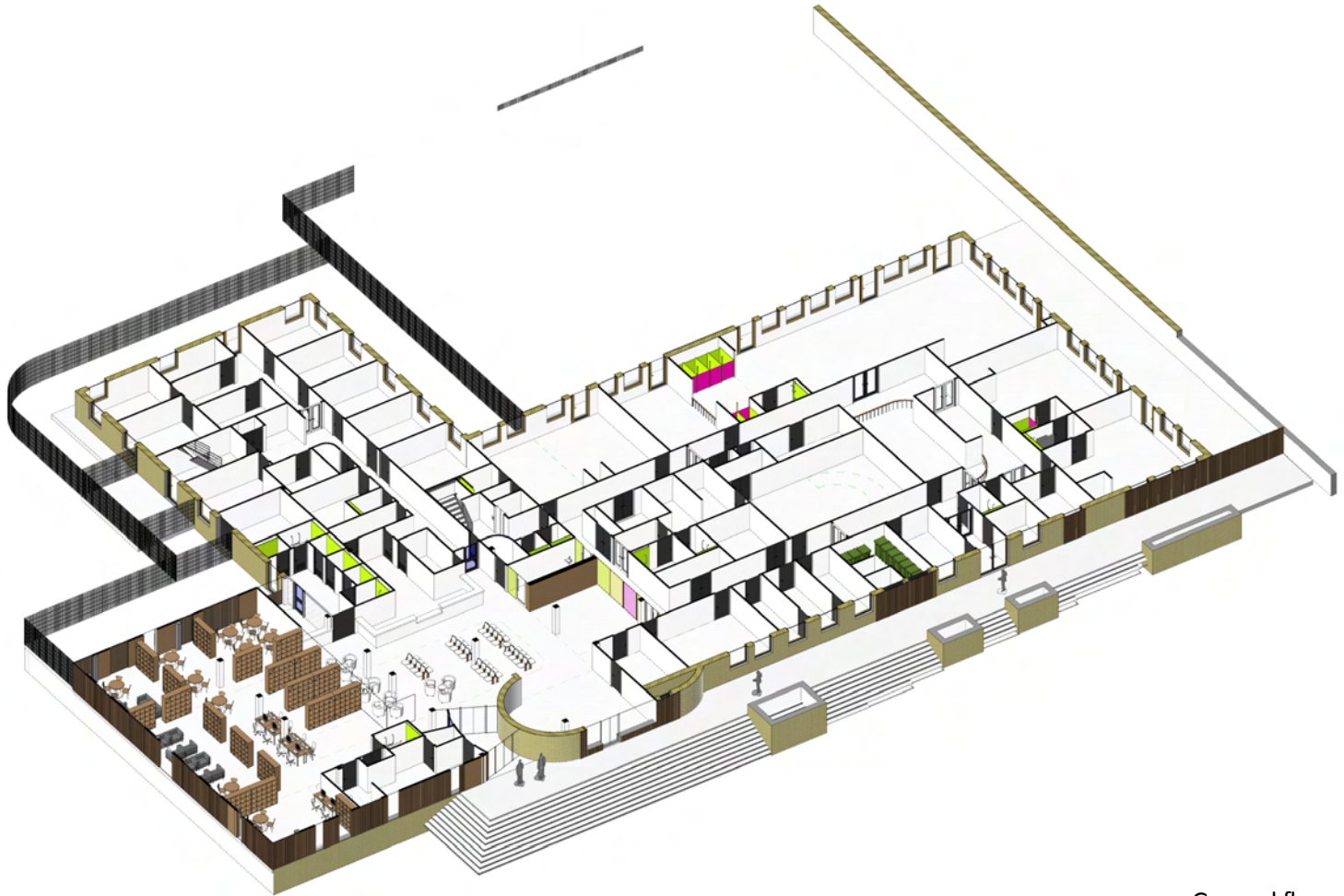


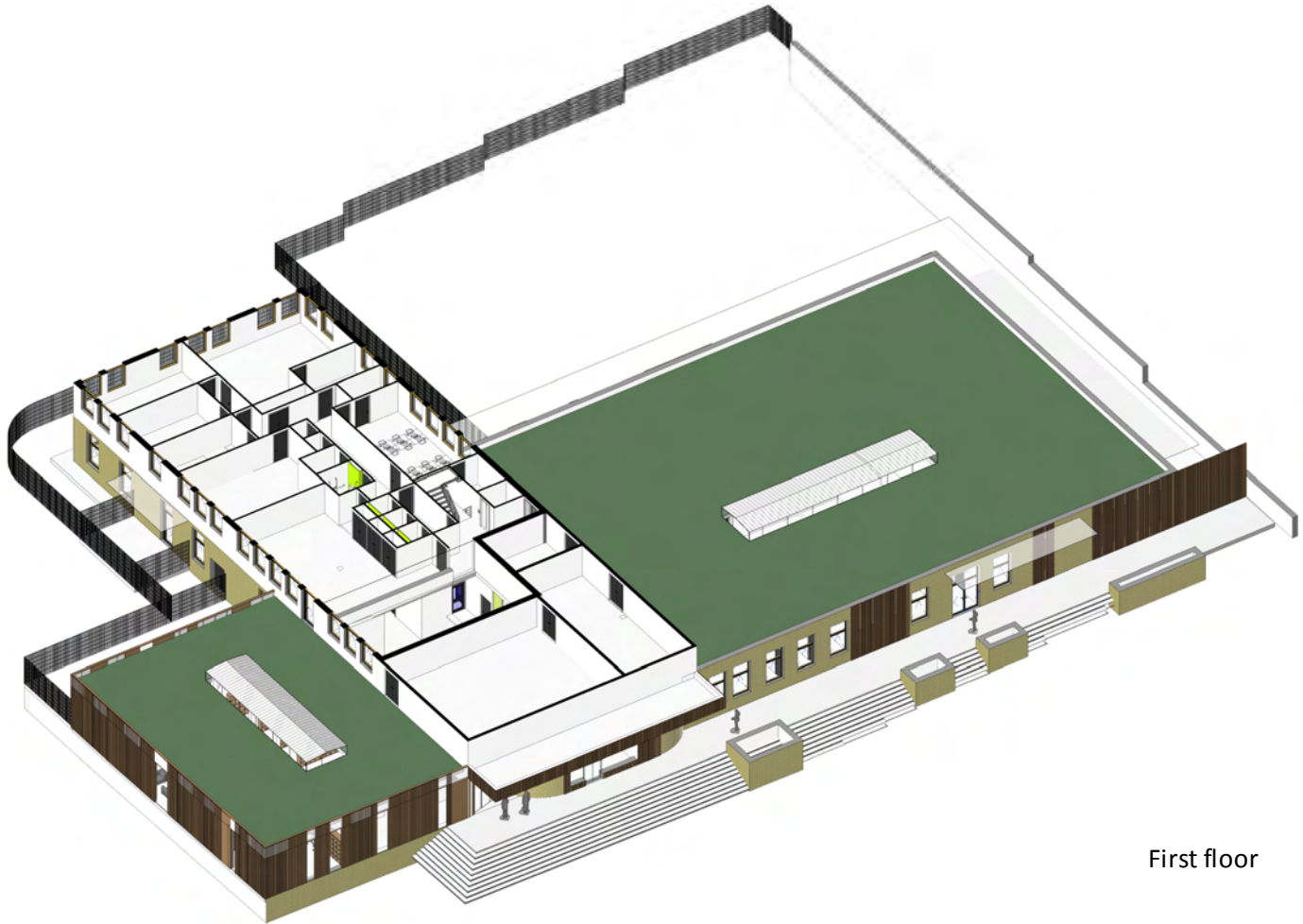










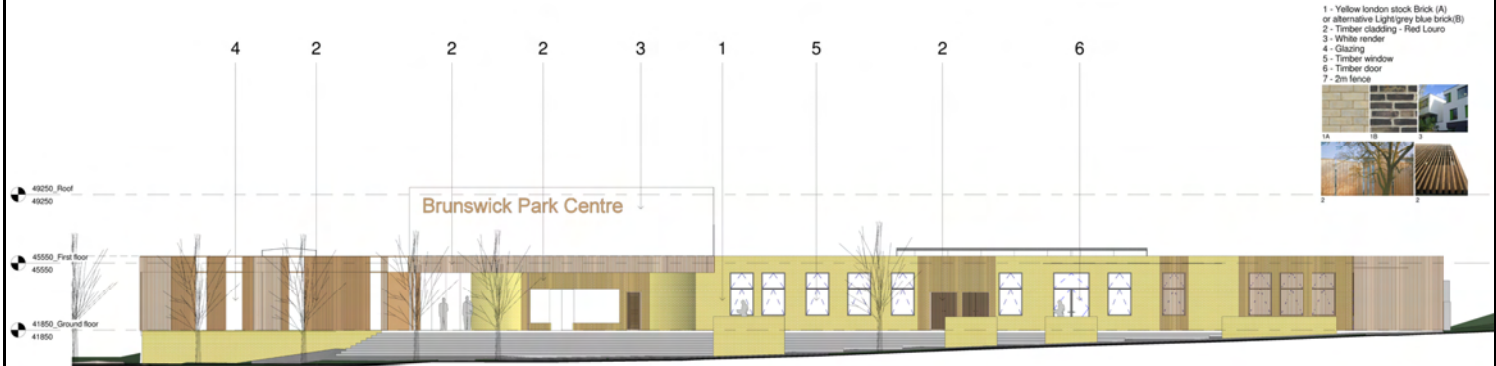


First floor

# C . Design - The new centre

## Brunswick Park Centre

16



1 Elevation North

1 : 100



2 Elevation East

1 : 100



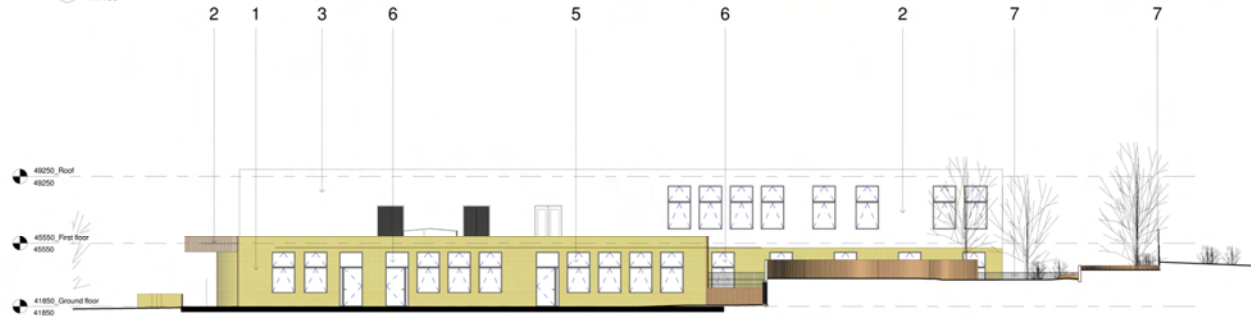
# C . Design - The new centre

## Brunswick Park Centre

17



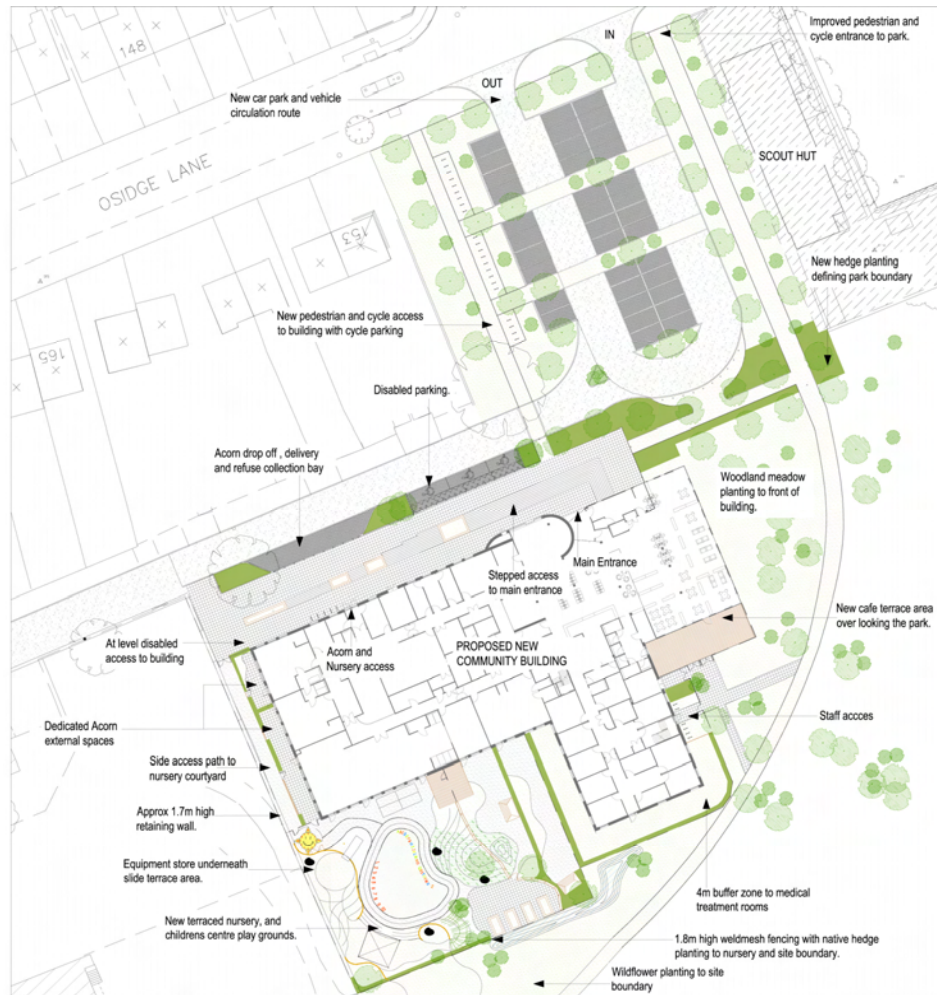
2 Elevation south  
1 : 100



1 Elevation West  
1 : 100







### Key:

	Heavy duty Macadam road		Native hedge and shrub planting
	Permeable block parking bays		Perennial, groundcover, grass and wildflower planting
	Slab paving		SUDS feature
	Permeable Resin bound paving		Building
	Pedestrian macadam paving.		Boulders
	Wetpour safety surface		Cycle parking.
	Ecomulch safety surface		2.0m high weldmesh Log retaining wall
	Proposed Tree		Proposed Contours
	Existing Tree		Raised planters









Aerial South view





Parking view





Thank you