



ENVIRONMENTAL CONSULTANTS LTD

**HIGHFIELD MIDDLE SCHOOL,
HIGHFIELD LANE,
PRUDHOE, NE42 6EY**



**UPDATED ASBESTOS REGISTER FROM VEGA REPORT
AR/02/0148
UPDATED BY ASBESTOS MANAGER – RON BROWN
UPDATE NUMBER 10**

***Registered Office:* Church Buildings, Station Road, Seaton Delaval,
Whitley Bay, TYNE & WEAR, NE25 0PT
Tel: (0191) 298 0188 Fax: (0191) 298 018**

Visit our Web-site at: <http://www.vega-ltd.demon.co.uk> e-mail: info@vega-ltd.demon.co.uk

CONFIDENTIAL

ASBESTOS SURVEY REPORT

Page 1 of 60

Report No: AR/02/0148 (update 10)

Date of Issue: 02/09/2015

Client: Mr R Brown
Northumberland County Council
County Hall
MORPETH
Northumberland
NE61 2EF

Clients Order No:

Date(s) of Survey: 13 & 14/02/02

Establishment Surveyed:
Prudhoe Highfields Middle School, Highfield
Lane, Prudhoe, NE42 6EY

Area(s) Surveyed: All accessible areas as requested by Mr R Brown.

Type of Survey: Type 2 (see 'Additional Information' section for definition) - Standard Sampling, Identification and Assessment

Purpose, Aims and Objectives

This survey was undertaken to establish the presence and nature of asbestos based materials in the area(s) surveyed. Surveying, sampling and assessment of asbestos-containing materials was carried out in accordance with MDHS 100 : July 2001 by documented in-house procedures.

Representative bulk and - if applicable - air samples were taken from the locations detailed in the following pages of this report.

The bulk samples were subject to a careful cleaning procedure involving disintegration of the sample, acid washing, solvent washing, filtration etc., in order to expose fibres in a form suitable for microscopic analysis. Analysis was carried out in accordance with MDHS 77 : June 1994 by documented in-house procedures.

Where applicable, all airborne fibre concentrations were measured according to the provisions of the Health and Safety Executive documents MDHS 39 and Guidance Note EH10 (current editions).

Vega Environmental Consultants Ltd cannot accept responsibility for any errors or misinterpretations introduced into a survey, or any resulting conclusions, as a result of a reduced sampling frequency specified by a client.

This survey attempts to identify all asbestos materials within the agreed scope of work. However, as asbestos materials can be completely hidden/buried within a structure, VEGA cannot accept responsibility for additional materials that may be identified at a later date.



VEGA do not hold UKAS Accreditation for survey work at present. However, VEGA is actively seeking UKAS Accreditation for survey work to compliment its current Accreditation for sampling and fibre identification

Checked by: Mr. R. Brown
Asbestos Manager

ASBESTOS REGISTER – MATERIAL ASSESSMENT

Report No AR/02/0148 (update 10)

Page 2 of 60

Area Id	Location of sample point/ Description of suspect material	Level of ID (P/SP/ID)	Sample ID	Action
Ground Floor Boiler House	Ceiling Panel	ID	BS/01	REMOVED AUG 2005
Ground Floor Boiler House	Boiler Flue Pipe (White)	SP	As BS/22	REMOVED AUG 2015
Ground Floor Entrance Lobby	Skylight Strips x 1	ID	BS/05	REMOVED AUG 2015
Ground Floor Female Staff Toilets	Skylight Strips x 2	SP	As BS/05	REMOVED AUG 2015
Ground Floor Female Staff Toilets	Black Toilet Cisterns x 3	ID	As BS/08	REMOVED AUG 2007
Ground Floor Male Staff Toilets	Skylight Strips x 2	SP	As BS/05	REMOVED AUG 2015
Ground Floor Male Staff Toilets	Black Toilet Cisterns x 2	ID	As BS/08	REMOVED AUG 2007
Ground Floor Corridor adjacent to Office Electrical Cupboard 1	Ceiling Panels	ID	BS/10	REMOVED NOV 2003
Ground Floor Corridor adjacent to Office Electrical Cupboard 1	Electrical flash guards	p	-	
Ground Floor Corridor adjacent to Office Electrical Cupboard 2	Ceiling Panels	ID	BS/10	REMOVED NOV 2003
Ground Floor Corridor adjacent to Office Electrical Cupboard 1	Electrical flash guards	p	-	

ASBESTOS REGISTER – MATERIAL ASSESSMENT

Report No AR/02/0148 (update 10)

Page 3 of 60

Area Id	Location of sample point/ Description of suspect material	Level of ID (P/SP/ID)	Sample ID	Action
Ground Floor Class 16 home craft	Cooker Baking Boards	ID	BS/11	REMOVED NOV 2003
Ground Floor Girls WC adjacent class 8	Black Toilet Cisterns x 6	SP	As Bs/08	REMOVED JUL 2006
Ground Floor Girls WC adjacent class 8	Skylight Strips x 2	SP	As Bs/05	REMOVED AUG 2015
Ground Floor Boys WC adjacent class 8	Black Toilet Cisterns x 2	SP	As Bs/08	REMOVED JUL 2006
Ground Floor Boys WC adjacent class 8	Skylight Strips x 2	SP	As BS/05	REMOVED AUG 2015
Ground Floor Class 8	Skylight Strips x 2	SP	As BS/05	REMOVED AUG 2015
Ground Floor Library	Skylight Strips x 4	SP	As BS/05	REMOVED AUG 2015
Ground Floor Kitchen	Ceiling Panels	ID	BS/18	REMOVED 2011
Ground Floor Kitchen	Above Servery - panel	ID	BS/01 Report No. AR/05/0571 Appendix B	REMOVED 2011
Ground Floor Kitchen Office & WC	Ceiling Panels	SP	As BS/18	REMOVED 2011
Ground Floor Kitchen Office & WC	Skylights & Ceiling Panels	SP	As BS/05	REMOVED 2011
Ground Floor Kitchen Office & WC	Toilet Cistern	SP	As BS/08	
Ground Floor Veg Store	Ceiling Panels	SP	As BS/18	REMOVED 2011

ASBESTOS REGISTER – MATERIAL ASSESSMENT

Report No AR/02/0148 (update 10)

Page 4 of 60

Area Id	Location of sample point/ Description of suspect material	Level of ID (P/SP/ID)	Sample ID	Action
Ground Floor Veg Store	Skylights	SP	As BS/05	REMOVED 2011
Ground Floor Larder	Ceiling Panels	SP	As BS/18	REMOVED 2011
Ground Floor Staff Change	Skylight Panels	SP	As BS/18	REMOVED 2011
Ground Floor Staff Change	Skylight Strips	SP	AS BS/05	REMOVED 2011
Ground Floor Boys Changing Area	Skylight Strips	SP	As BS/05	REMOVED 2011
Ground Floor Shower	Ceiling Panels	SP	As BS/18	REMOVED 2002
Ground Floor Boys Changing Shower	Skylight Panels	SP	As BS/18	REMOVED 2002
Ground Floor Boys Changing Shower	Skylight Strips	SP	As BS/05	REMOVED 2002
Ground Floor Lobby WC	Cistern	SP	As BS/08	REMOVED AUG 2015
Ground Floor Staff Change	Skylight Panels	SP	As BS/18	REMOVED AUG 2015
Ground Floor Staff Change	Skylight Strips	SP	As BS/05	REMOVED AUG 2015
Ground Floor Boys Changing Area	Skylight Strips	SP	As BS/05	REMOVED AUG 2015
Ground Floor Boys Changing Shower	Ceiling Panels	SP	As BS/18	REMOVED 2002
Ground Floor Boys Changing Shower	Skylight Panels	SP	As BS/18	REMOVED 2002
Ground Floor Boys Changing Shower	Skylight Strips	SP	As BS/05	REMOVED 2002

ASBESTOS REGISTER – MATERIAL ASSESSMENT

Report No AR/02/0148 (update 10)




Page 5 of 60

Area Id	Location of sample point/ Description of suspect material	Level of ID (P/SP/ID)	Sample ID	Action
Ground Floor WC	Cistern	SP	As BS/08	REMOVED AUG 2015
Ground Floor Staff Change	Skylight Panels	SP	As BS/18	REMOVED AUG 2015
Ground Floor Staff Change	Skylight Strips	SP	As BS/05	REMOVED AUG 2015
Ground Floor Girls Changing Area	Skylight Strips	SP	As BS/05	REMOVED 2011
Ground Floor Girls Shower	Ceiling Panels	SP	As BS/18	REMOVED 2002
Ground Floor Girls Shower	Skylight Panels	SP	As BS/18	REMOVED 2002
Ground Floor Girls Shower	Ceiling Strips	SP	As BS/05	REMOVED 2002
Ground Floor WC	Cistern	SP	As BS/08	REMOVED AUG 2015
Ground Floor Adjacent to Room 6	Skylight Strips x 3	SP	As BS/05	REMOVED AUG 2015
Ground Floor Boys Cloaks	Skylight Strip x 1	SP	As BS/05	REMOVED AUG 2005
Ground Floor Boys WC	Skylight Strip x 2	SP	As BS/05	REMOVED AUG 2005
Ground Floor Boys WC	Cistern	SP	As BS/08	REMOVED AUG 2005
Ground Floor Girls WC	Cistern x 5	SP	As BS/08	REMOVED AUG 2005
Ground Floor Girls Cloaks	Skylight Strip x 1	SP	As BS/05	REMOVED AUG 2005
Ground Floor Corridor adj Class 1	Skylight Strip x 3	SP	As BS/05	REMOVED AUG 2015
External	Boiler Flues x 2	ID	BS/22	REMOVED AUG 2015
External	Tiles on roof entrance	ID	BS/23	REMOVED AUG 2015

ASBESTOS REGISTER – MATERIAL ASSESSMENT

Report No AR/02/0148 (update 10)

Page 6 of 60

CODE	ACTION
	Remove ASAP
	Repair/Encapsulate ASAP
	Leave Undisturbed and Monitor Situation

VEGA ENVIRONMENTAL CONSULTANTS LTD

ASBESTOS SURVEY - DATA RECORD SHEET

Page 7 of 60

Report No: AR/02/0148 (update 10) **Contact:** Mr R Brown

Date of survey: 13 & 14/02/02

Client:
Northumberland County Council
County Hall
Morpeth

Tel: (01670) 533149

Analyst: P Dean/H Curry

Site Location: Prudhoe Highfields Middle
School

Area ID	Surveyed Yes/No	Location of sample point / Description of suspect material	Level of ID (P/SP/ID)	Sample ID	Extent (m/m ² /m ³)	Product Type (1,2,3)	Condition (0,1,2,3)	Surface Treatment (0,1,2,3)	Asbestos Type (1,2,3)	Score	Access (IA,OA,EA)	Action (A1,A2,A3)
GROUND FLOOR												
<i>Boiler house</i>	<i>Yes</i>	<i>Ceiling panel</i>	<i>ID</i>	<i>BS/01</i>	<i>27m²</i>	<i>2</i>	<i>0</i>	<i>0</i>	<i>2</i>	<i>4</i>	<i>OA</i>	REMOVED AUG 2005
		Boiler flue pipe (grey)	ID	BS/02	-	-	-	-	NA	-	-	-
		<i>Boiler flue pipe (white)</i>	<i>SP</i>	<i>As BS/22</i>	<i>2.5m²</i>	<i>1</i>	<i>0</i>	<i>0</i>	<i>1</i>	<i>2</i>	<i>EA</i>	REMOVED AUG 2015
		Debris behind boiler	ID	BS/03	-	-	-	-	NA	-	-	-
		Pipe insulation	ID	BS/04	-	-	-	-	NA	-	-	-

Level of ID: P – Presumed, SP – Strongly Presumed, ID – Identified. **Access:** IA – Inaccessible, OA – Occasionally Accessed, EA – Easily/Regularly Accessed

Asbestos Type: NA – Non-Asbestos **Action:** A1 – Remove ASAP, A2 – Repair/Encapsulate ASAP, A3 – Leave Undisturbed and Monitor Situation

Checked by: Mr. R. Brown
Asbestos Manager

VEGA ENVIRONMENTAL CONSULTANTS LTD

ASBESTOS SURVEY - DATA RECORD SHEET - continued

Page 8 of 60

Report No: AR/02/0148 (update 10)

Date of survey: 13 & 14/02/02

Area ID	Surveyed Yes/No	Location of sample point / Description of suspect material	Level of ID (P/SP/ID)	Sample ID	Extent (m/m ² /m ³)	Product Type (1,2,3)	Condition (0,1,2,3)	Surface Treatment (0,1,2,3)	Asbestos Type (1,2,3)	Score	Access (IA,OA,EA)	Action (A1,A2,A3)
MAIN SCHOOL GROUND FLOOR												
Entrance lobby	Yes	Ceiling panels	SP	-	-	-	-	-	NA	-	-	-
		Insulation above panels	SP	As BS/04	-	-	-	-	NA	-	-	-
		<i>Skylight strips x 1</i>	<i>ID</i>	<i>BS/05</i>	<i>1m²</i>	<i>2</i>	<i>0</i>	<i>2</i>	<i>2</i>	<i>6</i>	<i>OA</i>	<i>REMOVED AUG 2015</i>
		Floor covering vinyl floor tiles	ID	BS/06	-	-	-	-	NA	-	-	-
Cleaners cupboard	Yes	Ceiling panels	SP	-	-	-	-	-	NA	-	-	-
		Insulation above panels	SP	As BS/04	-	-	-	-	NA	-	-	-
		Floor covering vinyl floor tiles	ID	BS/07	-	-	-	-	NA	-	-	-

Level of ID: P – Presumed, SP – Strongly Presumed, ID – Identified. **Access:** IA – Inaccessible, OA – Occasionally Accessed, EA – Easily/Regularly Accessed

Asbestos Type: NA – Non-Asbestos **Action:** A1 – Remove ASAP, A2 – Repair/Encapsulate ASAP, A3 – Leave Undisturbed and Monitor Situation

Checked by: Mr. R. Brown
Asbestos Manager

VEGA ENVIRONMENTAL CONSULTANTS LTD

ASBESTOS SURVEY - DATA RECORD SHEET - continued

Page 9 of 60

Report No: AR/02/0148 (update 10)

Date of survey: 13 & 14/02/02

Area ID	Surveyed Yes/No	Location of sample point / Description of suspect material	Level of ID (P/SP/ID)	Sample ID	Extent (m/m ² /m ³)	Product Type (1,2,3)	Condition (0,1,2,3)	Surface Treatment (0,1,2,3)	Asbestos Type (1,2,3)	Score	Access (IA,OA,EA)	Action (A1,A2,A3)
GROUND FLOOR (cont)												
Secretary's office	Yes	Ceiling panels	SP	-	-	-	-	-	NA	-	-	-
		Insulation above panels	SP	As BS/04	-	-	-	-	NA	-	-	-
Head teachers office	Yes	Ceiling panels	SP	-	-	-	-	-	NA	-	-	-
		Insulation above panels	SP	As BS/04	-	-	-	-	NA	-	-	-
Deputy heads	Yes	Ceiling panels	SP	-	-	-	-	-	NA	-	-	-
		Insulation above panels	SP	As BS/04	-	-	-	-	NA	-	-	-

Level of ID: P – Presumed, SP – Strongly Presumed, ID – Identified. **Access:** IA – Inaccessible, OA – Occasionally Accessed, EA – Easily/Regularly Accessed

Asbestos Type: NA – Non-Asbestos **Action:** A1 – Remove ASAP, A2 – Repair/Encapsulate ASAP, A3 – Leave Undisturbed and Monitor Situation

Checked by: Mr. R. Brown
Asbestos Manager

VEGA ENVIRONMENTAL CONSULTANTS LTD

ASBESTOS SURVEY - DATA RECORD SHEET - continued

Page 10 of 60

Report No: AR/02/0148 (update 10)

Date of survey: 13 & 14/02/02

Area ID	Surveyed Yes/No	Location of sample point / Description of suspect material	Level of ID (P/SP/ID)	Sample ID	Extent (m/m ² /m ³)	Product Type (1,2,3)	Condition (0,1,2,3)	Surface Treatment (0,1,2,3)	Asbestos Type (1,2,3)	Score	Access (IA,OA,EA)	Action (A1,A2,A3)
GROUND FLOOR (cont)												
Staff room	Yes	Ceiling panels	SP	-	-	-	-	-	NA	-	-	-
		Insulation above panels	SP	As BS/04	-	-	-	-	NA	-	-	-
		Wall panels to sink wall	SP	-	-	-	-	-	NA	-	-	-
		Floor covering	SP	-	-	-	-	-	NA	-	-	-
Wall heater	No	No access	-	-	-	-	-	-	-	-	-	-
Female staff WC	Yes	Ceiling panels	SP	-	-	-	-	-	NA	-	-	-
		Insulation above panels	SP	As BS/04	-	-	-	-	NA	-	-	-

Level of ID: P – Presumed, SP – Strongly Presumed, ID – Identified. **Access:** IA – Inaccessible, OA – Occasionally Accessed, EA – Easily/Regularly Accessed
Asbestos Type: NA – Non-Asbestos **Action:** A1 – Remove ASAP, A2 – Repair/Encapsulate ASAP, A3 – Leave Undisturbed and Monitor Situation

Checked by: Mr. R. Brown
Asbestos Manager

VEGA ENVIRONMENTAL CONSULTANTS LTD

ASBESTOS SURVEY - DATA RECORD SHEET - continued

Page 11 of 60

Report No: AR/02/0148 (update 10)

Date of survey: 13 & 14/02/02

Area ID	Surveyed Yes/No	Location of sample point / Description of suspect material	Level of ID (P/SP/ID)	Sample ID	Extent (m/m ² /m ³)	Product Type (1,2,3)	Condition (0,1,2,3)	Surface Treatment (0,1,2,3)	Asbestos Type (1,2,3)	Score	Access (IA,OA,EA)	Action (A1,A2,A3)
GROUND FLOOR (cont)												
Female staff WC (cont)	Yes	<i>Skylight strips x 2</i>	<i>ID</i>	<i>As BS/05</i>	<i>1m²</i>	<i>2</i>	<i>0</i>	<i>2</i>	<i>2</i>	<i>6</i>	<i>OA</i>	<i>REMOVED AUG 2015</i>
		<i>Black cisterns x 3</i>	<i>ID</i>	<i>BS/08</i>	<i>1.5m²</i>	<i>1</i>	<i>0</i>	<i>0</i>	<i>2</i>	<i>3</i>	<i>EA</i>	<i>REMOVED AUG 2007</i>
		Vinyl floor covering	SP	As BS/07	-	-	-	-	NA	-	-	-
Male staff WC	Yes	Ceiling panels	SP	-	-	-	-	-	NA	-	-	-
		<i>Skylight strips x 2</i>	<i>ID</i>	<i>As BS/05</i>	<i>1m²</i>	<i>2</i>	<i>0</i>	<i>2</i>	<i>2</i>	<i>6</i>	<i>OA</i>	<i>REMOVED AUG 2015</i>
		<i>Black cisterns x 2</i>	<i>ID</i>	<i>As BS/08</i>	<i>1.5m²</i>	<i>1</i>	<i>0</i>	<i>0</i>	<i>2</i>	<i>3</i>	<i>EA</i>	<i>REMOVED AUG 2007</i>

Level of ID: P – Presumed, SP – Strongly Presumed, ID – Identified. **Access:** IA – Inaccessible, OA – Occasionally Accessed, EA – Easily/Regularly Accessed

Asbestos Type: NA – Non-Asbestos **Action:** A1 – Remove ASAP, A2 – Repair/Encapsulate ASAP, A3 – Leave Undisturbed and Monitor Situation

Checked by: Mr. R. Brown
Asbestos Manager

VEGA ENVIRONMENTAL CONSULTANTS LTD

ASBESTOS SURVEY - DATA RECORD SHEET - continued

Page 12 of 60

Report No: AR/02/0148 (update 10)

Date of survey: 13 & 14/02/02

Area ID	Surveyed Yes/No	Location of sample point / Description of suspect material	Level of ID (P/SP/ID)	Sample ID	Extent (m/m ² /m ³)	Product Type (1,2,3)	Condition (0,1,2,3)	Surface Treatment (0,1,2,3)	Asbestos Type (1,2,3)	Score	Access (IA,OA,EA)	Action (A1,A2,A3)
GROUND FLOOR (cont)												
Male staff WC	Yes	Vinyl floor covering	ID	BS/09	-	-	-	-	NA	-	-	-
“Private” cupboard	Yes	Ceiling panels	SP	-	-	-	-	-	NA	-	-	-
		Vinyl floor covering	SP	As BS/07	-	-	-	-	NA	-	-	-
Caretakers cupboard	Yes	Ceiling tiles	SP	-	-	-	-	-	NA	-	-	-
		Vinyl floor covering	SP	As BS/09	-	-	-	-	NA	-	-	-

Level of ID: P – Presumed, SP – Strongly Presumed, ID – Identified. **Access:** IA – Inaccessible, OA – Occasionally Accessed, EA – Easily/Regularly Accessed

Asbestos Type: NA – Non-Asbestos **Action:** A1 – Remove ASAP, A2 – Repair/Encapsulate ASAP, A3 – Leave Undisturbed and Monitor Situation

Checked by: Mr. R. Brown
Asbestos Manager

VEGA ENVIRONMENTAL CONSULTANTS LTD

ASBESTOS SURVEY - DATA RECORD SHEET - continued

Page 13 of 60

Report No: AR/02/0148 (update 10)

Date of survey: 13 & 14/02/02

Area ID	Surveyed Yes/No	Location of sample point / Description of suspect material	Level of ID (P/SP/ID)	Sample ID	Extent (m/m ² /m ³)	Product Type (1,2,3)	Condition (0,1,2,3)	Surface Treatment (0,1,2,3)	Asbestos Type (1,2,3)	Score	Access (IA,OA,EA)	Action (A1,A2,A3)
GROUND FLOOR (cont)												
Corridor adjacent office	Yes	Ceiling panels	SP	-	-	-	-	-	NA	-	-	-
		Insulation above panels	SP	As BS/04	-	-	-	-	NA	-	-	-
		<i>Skylight strips x 2</i>	<i>ID</i>	<i>As BS/05</i>	<i>1m²</i>	<i>2</i>	<i>0</i>	<i>2</i>	<i>2</i>	<i>6</i>	<i>OA</i>	REMOVED AUG 2005
Electrical cupboard 1	Yes	<i>Ceiling panels</i>	<i>ID</i>	<i>BS/10</i>	<i>3m²</i>	<i>2</i>	<i>2</i>	<i>2</i>	<i>2</i>	<i>8</i>	<i>OA</i>	REMOVED NOV 2003
		<i>Electrical flash guards</i>	<i>SP</i>	<i>-</i>	<i>1m²</i>	<i>2</i>	<i>0</i>	<i>2</i>	<i>1</i>	<i>5</i>	<i>OA</i>	A3

Level of ID: P – Presumed, SP – Strongly Presumed, ID – Identified. **Access:** IA – Inaccessible, OA – Occasionally Accessed, EA – Easily/Regularly Accessed

Asbestos Type: NA – Non-Asbestos **Action:** A1 – Remove ASAP, A2 – Repair/Encapsulate ASAP, A3 – Leave Undisturbed and Monitor Situation

Checked by: Mr. R. Brown
Asbestos Manager

VEGA ENVIRONMENTAL CONSULTANTS LTD

ASBESTOS SURVEY - DATA RECORD SHEET - continued

Page 14 of 60

Report No: AR/02/0148 (update 10)

Date of survey: 13 & 14/02/02

Area ID	Surveyed Yes/No	Location of sample point / Description of suspect material	Level of ID (P/SP/ID)	Sample ID	Extent (m/m ² /m ³)	Product Type (1,2,3)	Condition (0,1,2,3)	Surface Treatment (0,1,2,3)	Asbestos Type (1,2,3)	Score	Access (IA,OA,EA)	Action (A1,A2,A3)
GROUND FLOOR (cont)												
Electrical cupboard 2	Yes	<i>Ceiling panels</i>	<i>ID</i>	<i>As BS/10</i>	<i>3m²</i>	<i>2</i>	<i>2</i>	<i>2</i>	<i>2</i>	<i>8</i>	REMOVED	NOVEMBER 2003
		<i>Electrical flash guards</i>	<i>SP</i>	<i>-</i>	<i>1m²</i>	<i>2</i>	<i>0</i>	<i>2</i>	<i>1</i>	<i>5</i>	<i>OA</i>	<i>A3</i>
Corridor	Yes	Vinyl floor covering	SP	As BS/06	-	-	-	-	NA	-	-	-
Class 16 home craft	Yes	Ceiling panels	SP	-	-	-	-	-	NA	-	-	-
		Insulation above panels	SP	As BS/04	-	-	-	-	NA	-	-	-

Level of ID: P – Presumed, SP – Strongly Presumed, ID – Identified. **Access:** IA – Inaccessible, OA – Occasionally Accessed, EA – Easily/Regularly Accessed
Asbestos Type: NA – Non-Asbestos **Action:** A1 – Remove ASAP, A2 – Repair/Encapsulate ASAP, A3 – Leave Undisturbed and Monitor Situation

Checked by: Mr. R. Brown
Asbestos Manager

VEGA ENVIRONMENTAL CONSULTANTS LTD

ASBESTOS SURVEY - DATA RECORD SHEET - continued

Page 15 of 60

Report No: AR/02/0148 (update 10)

Date of survey: 13 & 14/02/02

Area ID	Surveyed Yes/No	Location of sample point / Description of suspect material	Level of ID (P/SP/ID)	Sample ID	Extent (m/m ² /m ³)	Product Type (1,2,3)	Condition (0,1,2,3)	Surface Treatment (0,1,2,3)	Asbestos Type (1,2,3)	Score	Access (IA,OA,EA)	Action (A1,A2,A3)
GROUND FLOOR (cont)												
Class 16 home craft (cont)	Yes	Pipe insulation	SP	As BS/04	-	-	-	-	NA	-	-	-
		<i>Cooker backing boards</i>	<i>ID</i>	<i>BS/11</i>	<i>3m²</i>	<i>2</i>	<i>1</i>	<i>1</i>	<i>1</i>	<i>5</i>	<i>EA</i>	REMOVED NOV 2003
		Vinyl floor covering	ID	BS/12	-	-	-	-	NA	-	-	-
Wall heater	No	No access	-	-	-	-	-	-	-	-	-	-

Level of ID: P – Presumed, SP – Strongly Presumed, ID – Identified. **Access:** IA – Inaccessible, OA – Occasionally Accessed, EA – Easily/Regularly Accessed

Asbestos Type: NA – Non-Asbestos **Action:** A1 – Remove ASAP, A2 – Repair/Encapsulate ASAP, A3 – Leave Undisturbed and Monitor Situation

Checked by: Mr. R. Brown

Asbestos Manager

VEGA ENVIRONMENTAL CONSULTANTS LTD

ASBESTOS SURVEY - DATA RECORD SHEET - continued

Page 16 of 60

Report No: AR/02/0148 (update 10)

Date of survey: 13 & 14/02/02

Area ID	Surveyed Yes/No	Location of sample point / Description of suspect material	Level of ID (P/SP/ID)	Sample ID	Extent (m/m ² /m ³)	Product Type (1,2,3)	Condition (0,1,2,3)	Surface Treatment (0,1,2,3)	Asbestos Type (1,2,3)	Score	Access (IA,OA,EA)	Action (A1,A2,A3)
GROUND FLOOR (cont)												
Class 15 art room	Yes	Ceiling panels	SP	-	-	-	-	-	NA	-	-	-
		Insulation above panels	SP	As BS/04	-	-	-	-	NA	-	-	-
		Pipe insulation	SP	As BS/04	-	-	-	-	NA	-	-	-
		Wall panels	SP	-	-	-	-	-	NA	-	-	-
		Vinyl floor covering	ID	BS/13	-	-	-	-	NA	-	-	-
Art store	Yes	Ceiling panels	SP	-	-	-	-	-	NA	-	-	-
		Vinyl floor covering	SP	As BS/13	-	-	-	-	NA	-	-	-

Level of ID: P – Presumed, SP – Strongly Presumed, ID – Identified. **Access:** IA – Inaccessible, OA – Occasionally Accessed, EA – Easily/Regularly Accessed

Asbestos Type: NA – Non-Asbestos **Action:** A1 – Remove ASAP, A2 – Repair/Encapsulate ASAP, A3 – Leave Undisturbed and Monitor Situation

Checked by: Mr. R. Brown
Asbestos Manager

VEGA ENVIRONMENTAL CONSULTANTS LTD

ASBESTOS SURVEY - DATA RECORD SHEET - continued

Page 17 of 60

Report No: AR/02/0148 (update 10)

Date of survey: 13 & 14/02/02

Area ID	Surveyed Yes/No	Location of sample point / Description of suspect material	Level of ID (P/SP/ID)	Sample ID	Extent (m/m ² /m ³)	Product Type (1,2,3)	Condition (0,1,2,3)	Surface Treatment (0,1,2,3)	Asbestos Type (1,2,3)	Score	Access (IA,OA,EA)	Action (A1,A2,A3)
GROUND FLOOR (cont)												
Class 14 woodwork workshop	Yes	Ceiling panels	SP	-	-	-	-	-	NA	-	-	
		Insulation above panels	SP	As BS/04	-	-	-	-	NA	-	-	-
		Flame fast brazing hearth	ID	BS/14	-	-	-	-	NA	-	-	-
Wall heater	No	No access	-	-	-	-	-	-	-	-	-	-
Wood store	Yes	Ceiling panels	SP	-	-	-	-	-	NA	-	-	-
		Insulation above	SP	As BS/04	-	-	-	-	NA	-	-	-

Level of ID: P – Presumed, SP – Strongly Presumed, ID – Identified. **Access:** IA – Inaccessible, OA – Occasionally Accessed, EA – Easily/Regularly Accessed

Asbestos Type: NA – Non-Asbestos **Action:** A1 – Remove ASAP, A2 – Repair/Encapsulate ASAP, A3 – Leave Undisturbed and Monitor Situation

Checked by: Mr. R. Brown
Asbestos Manager

VEGA ENVIRONMENTAL CONSULTANTS LTD

ASBESTOS SURVEY - DATA RECORD SHEET - continued

Page 18 of 60

Report No: AR/02/0148 (update 10)

Date of survey: 13 & 14/02/02

Area ID	Surveyed Yes/No	Location of sample point / Description of suspect material	Level of ID (P/SP/ID)	Sample ID	Extent (m/m ² /m ³)	Product Type (1,2,3)	Condition (0,1,2,3)	Surface Treatment (0,1,2,3)	Asbestos Type (1,2,3)	Score	Access (IA,OA,EA)	Action (A1,A2,A3)
GROUND FLOOR (cont)												
Corridor adjacent class 11	Yes	Ceiling panels	SP	-	-	-	-	-	NA	-	-	-
		Insulation above	SP	As BS/04	-	-	-	-	NA	-	-	-
		Wall panels	SP	-	-	-	-	-	NA	-	-	-
		Orange vinyl floor tiles	ID	BS/15	-	-	-	-	NA	-	-	-
		Grey vinyl floor tiles	SP	As BS/13	-	-	-	-	NA	-	-	-
Wall heater	No	No access	-	-	-	-	-	-	-	-	-	-

Level of ID: P – Presumed, SP – Strongly Presumed, ID – Identified. **Access:** IA – Inaccessible, OA – Occasionally Accessed, EA – Easily/Regularly Accessed

Asbestos Type: NA – Non-Asbestos **Action:** A1 – Remove ASAP, A2 – Repair/Encapsulate ASAP, A3 – Leave Undisturbed and Monitor Situation

Checked by: Mr. R. Brown
Asbestos Manager

VEGA ENVIRONMENTAL CONSULTANTS LTD

ASBESTOS SURVEY - DATA RECORD SHEET - continued

Page 19 of 60

Report No: AR/02/0148 (update 10)

Date of survey: 13 & 14/02/02

Area ID	Surveyed Yes/No	Location of sample point / Description of suspect material	Level of ID (P/SP/ID)	Sample ID	Extent (m/m ² /m ³)	Product Type (1,2,3)	Condition (0,1,2,3)	Surface Treatment (0,1,2,3)	Asbestos Type (1,2,3)	Score	Access (IA,OA,EA)	Action (A1,A2,A3)
GROUND FLOOR (cont)												
Class 11	Yes	Ceiling panels	SP	-	-	-	-	-	NA	-	-	-
		Insulation above	SP	As BS/04	-	-	-	-	NA	-	-	-
		Panels below window	SP	-	-	-	-	-	NA	-	-	-
		Wall panels	SP	-	-	-	-	-	NA	-	-	-
Wall heater	No	No access	-	-	-	-	-	-	-	-	-	-
Class 10	Yes	Ceiling panels	SP	-	-	-	-	-	NA	-	-	-
		Insulation above	SP	As BS/04	-	-	-	-	NA	-	-	-

Level of ID: P – Presumed, SP – Strongly Presumed, ID – Identified. **Access:** IA – Inaccessible, OA – Occasionally Accessed, EA – Easily/Regularly Accessed

Asbestos Type: NA – Non-Asbestos **Action:** A1 – Remove ASAP, A2 – Repair/Encapsulate ASAP, A3 – Leave Undisturbed and Monitor Situation

Checked by: Mr. R. Brown
Asbestos Manager

VEGA ENVIRONMENTAL CONSULTANTS LTD

ASBESTOS SURVEY - DATA RECORD SHEET - continued

Page 20 of 60

Report No: AR/02/0148 (update 10)

Date of survey: 13 & 14/02/02

Area ID	Surveyed Yes/No	Location of sample point / Description of suspect material	Level of ID (P/SP/ID)	Sample ID	Extent (m/m ² /m ³)	Product Type (1,2,3)	Condition (0,1,2,3)	Surface Treatment (0,1,2,3)	Asbestos Type (1,2,3)	Score	Access (IA,OA,EA)	Action (A1,A2,A3)
GROUND FLOOR (cont)												
Class 10 (cont)	Yes	Wall panels	SP	-	-	-	-	-	NA	-	-	-
Wall heater	No	No access	-	-	-	-	-	-	-	-	-	-
Class 9	Yes	Ceiling panels	SP	-	-	-	-	-	NA	-	-	-
		Insulation above	SP	As BS/04	-	-	-	-	NA	-	-	-
		Wall panels	SP	-	-	-	-	-	NA	-	-	-
Wall heater	No	No access	-	-	-	-	-	-	-	-	-	-
Store	Yes	Wall panels	SP	-	-	-	-	-	NA	-	-	-

Level of ID: P – Presumed, SP – Strongly Presumed, ID – Identified. **Access:** IA – Inaccessible, OA – Occasionally Accessed, EA – Easily/Regularly Accessed
Asbestos Type: NA – Non-Asbestos **Action:** A1 – Remove ASAP, A2 – Repair/Encapsulate ASAP, A3 – Leave Undisturbed and Monitor Situation

Checked by: Mr. R. Brown
Asbestos Manager

VEGA ENVIRONMENTAL CONSULTANTS LTD

ASBESTOS SURVEY - DATA RECORD SHEET - continued

Page 21 of 60

Report No: AR/02/0148 (update 10)

Date of survey: 13 & 14/02/02

Area ID	Surveyed Yes/No	Location of sample point / Description of suspect material	Level of ID (P/SP/ID)	Sample ID	Extent (m/m ² /m ³)	Product Type (1,2,3)	Condition (0,1,2,3)	Surface Treatment (0,1,2,3)	Asbestos Type (1,2,3)	Score	Access (IA,OA,EA)	Action (A1,A2,A3)
GROUND FLOOR (cont)												
Girls WC adjacent class 8	Yes	Ceiling panels	SP	-	-	-	-	-	NA	-	-	-
		Vinyl floor tile	ID	BS/16	-	-	-	-	NA	-	-	-
		<i>Black cisterns x 6</i>	<i>SP</i>	<i>As BS/08</i>	<i>1.5m²</i>	<i>1</i>	<i>0</i>	<i>0</i>	<i>2</i>	<i>3</i>	<i>EA</i>	<i>REMOVED JUL 2006</i>
		<i>Skylight strips x 2</i>	<i>ID</i>	<i>As BS/05</i>	<i>1m²</i>	<i>2</i>	<i>0</i>	<i>1</i>	<i>2</i>	<i>5</i>	<i>OA</i>	<i>REMOVED AUG 2015</i>
Boys WC	Yes	<i>Skylight strips x 2</i>	<i>ID</i>	<i>As BS/05</i>	<i>1m²</i>	<i>2</i>	<i>0</i>	<i>1</i>	<i>2</i>	<i>5</i>	<i>OA</i>	<i>REMOVED AUG 2015</i>
		<i>Black cisterns x 2</i>	<i>SP</i>	<i>As BS/08</i>	<i>1.5m²</i>	<i>1</i>	<i>0</i>	<i>0</i>	<i>2</i>	<i>3</i>	<i>EA</i>	<i>REMOVED JUL 2006</i>
		Ceiling tiles	SP	-	-	-	-	-	NA	-	-	-

Level of ID: P – Presumed, SP – Strongly Presumed, ID – Identified. **Access:** IA – Inaccessible, OA – Occasionally Accessed, EA – Easily/Regularly Accessed

Asbestos Type: NA – Non-Asbestos **Action:** A1 – Remove ASAP, A2 – Repair/Encapsulate ASAP, A3 – Leave Undisturbed and Monitor Situation

Checked by: Mr. R. Brown
Asbestos Manager

VEGA ENVIRONMENTAL CONSULTANTS LTD

ASBESTOS SURVEY - DATA RECORD SHEET - continued

Page 22 of 60

Report No: AR/02/0148 (update 10)

Date of survey: 13 & 14/02/02

Area ID	Surveyed Yes/No	Location of sample point / Description of suspect material	Level of ID (P/SP/ID)	Sample ID	Extent (m/m ² /m ³)	Product Type (1,2,3)	Condition (0,1,2,3)	Surface Treatment (0,1,2,3)	Asbestos Type (1,2,3)	Score	Access (IA,OA,EA)	Action (A1,A2,A3)
GROUND FLOOR (cont)												
Class 8	Yes	Ceiling tiles	SP	-	-	-	-	-	NA	-	-	-
		Insulation above	SP	As BS/04	-	-	-	-	NA	-	-	-
		<i>Skylight strips x 2</i>	<i>ID</i>	<i>As BS/05</i>	<i>3m²</i>	<i>1</i>	<i>0</i>	<i>0</i>	<i>2</i>	<i>3</i>	<i>OA</i>	<i>REMOVED AUG 2015</i>
		Wall panels	SP	-	-	-	-	-	NA	-	-	-
Wall heater	No	No access	-	-	-	-	-	-	-	-	-	-

Level of ID: P – Presumed, SP – Strongly Presumed, ID – Identified. **Access:** IA – Inaccessible, OA – Occasionally Accessed, EA – Easily/Regularly Accessed

Asbestos Type: NA – Non-Asbestos **Action:** A1 – Remove ASAP, A2 – Repair/Encapsulate ASAP, A3 – Leave Undisturbed and Monitor Situation

Checked by: Mr. R. Brown
Asbestos Manager

VEGA ENVIRONMENTAL CONSULTANTS LTD

ASBESTOS SURVEY - DATA RECORD SHEET - continued

Page 23 of 60

Report No: AR/02/0148 (update 10)

Date of survey: 13 & 14/02/02

Area ID	Surveyed Yes/No	Location of sample point / Description of suspect material	Level of ID (P/SP/ID)	Sample ID	Extent (m/m ² /m ³)	Product Type (1,2,3)	Condition (0,1,2,3)	Surface Treatment (0,1,2,3)	Asbestos Type (1,2,3)	Score	Access (IA,OA,EA)	Action (A1,A2,A3)
GROUND FLOOR (cont)												
Library	Yes	Ceiling panels	SP	-	-	-	-	-	NA	-	-	-
		Insulation above panels	SP	As BS/04	-	-	-	-	NA	-	-	-
		<i>Skylight strips x 4</i>	<i>ID</i>	<i>As BS/05</i>	<i>3m²</i>	<i>1</i>	<i>0</i>	<i>0</i>	<i>2</i>	<i>3</i>	<i>OA</i>	<i>REMOVED AUG 2015</i>
		Vinyl floor covering	SP	As BS/12	-	-	-	-	NA	-	-	-
Wall heater	No	No access	-	-	-	-	-	-	-	-	-	-
Store	Yes	No suspect material identified	-	-	-	-	-	-	-	-	-	-

Level of ID: P – Presumed, SP – Strongly Presumed, ID – Identified. **Access:** IA – Inaccessible, OA – Occasionally Accessed, EA – Easily/Regularly Accessed

Asbestos Type: NA – Non-Asbestos **Action:** A1 – Remove ASAP, A2 – Repair/Encapsulate ASAP, A3 – Leave Undisturbed and Monitor Situation

Checked by: Mr. R. Brown
Asbestos Manager

VEGA ENVIRONMENTAL CONSULTANTS LTD

ASBESTOS SURVEY - DATA RECORD SHEET - continued

Page 24 of 60

Report No: AR/02/0148 (update 10)

Date of survey: 13 & 14/02/02

Area ID	Surveyed Yes/No	Location of sample point / Description of suspect material	Level of ID (P/SP/ID)	Sample ID	Extent (m/m ² /m ³)	Product Type (1,2,3)	Condition (0,1,2,3)	Surface Treatment (0,1,2,3)	Asbestos Type (1,2,3)	Score	Access (IA,OA,EA)	Action (A1,A2,A3)
GROUND FLOOR (cont)												
Class 7 music room	Yes	Ceiling panels	SP	-	-	-	-	-	NA	-	-	-
		Insulation above panels	SP	As BS/04	-	-	-	-	NA	-	-	-
		Wall panels	SP	-	-	-	-	-	NA	-	-	-
Wall heater	No	No access	-	-	-	-	-	-	-	-	-	-
Class 12 Science	Yes	Ceiling panels	SP	-	-	-	-	-	NA	-	-	-
		Insulation above panels	SP	As BS/04	-	-	-	-	NA	-	-	-

Level of ID: P – Presumed, SP – Strongly Presumed, ID – Identified. **Access:** IA – Inaccessible, OA – Occasionally Accessed, EA – Easily/Regularly Accessed

Asbestos Type: NA – Non-Asbestos **Action:** A1 – Remove ASAP, A2 – Repair/Encapsulate ASAP, A3 – Leave Undisturbed and Monitor Situation

Checked by: Mr. R. Brown
Asbestos Manager

VEGA ENVIRONMENTAL CONSULTANTS LTD

ASBESTOS SURVEY - DATA RECORD SHEET - continued

Page 25 of 60

Report No: AR/02/0148 (update 10)

Date of survey: 13 & 14/02/02

Area ID	Surveyed Yes/No	Location of sample point / Description of suspect material	Level of ID (P/SP/ID)	Sample ID	Extent (m/m ² /m ³)	Product Type (1,2,3)	Condition (0,1,2,3)	Surface Treatment (0,1,2,3)	Asbestos Type (1,2,3)	Score	Access (IA,OA,EA)	Action (A1,A2,A3)
GROUND FLOOR (cont)												
Class 12 (cont)	Yes	Bunsen burner mats	SP	As BS/14	-	-	-					
Wall heaters	No	No access	-	-	-	-	-	-	-	-	-	-
Science prep room	Yes	Ceiling panels	SP	-	-	-	-	-	NA	-	-	-
		Insulation above panels	SP	As BS/04	-	-	-	-	NA	-	-	-
		Floor covering	SP	As BS/17	-	-	-	-	NA	-	-	-

Level of ID: P – Presumed, SP – Strongly Presumed, ID – Identified. **Access:** IA – Inaccessible, OA – Occasionally Accessed, EA – Easily/Regularly Accessed

Asbestos Type: NA – Non-Asbestos **Action:** A1 – Remove ASAP, A2 – Repair/Encapsulate ASAP, A3 – Leave Undisturbed and Monitor Situation

Checked by: Mr. R. Brown
Asbestos Manager

VEGA ENVIRONMENTAL CONSULTANTS LTD

ASBESTOS SURVEY - DATA RECORD SHEET - continued

Page 26 of 60

Report No: AR/02/0148 (update 10)

Date of survey: 13 & 14/02/02

Area ID	Surveyed Yes/No	Location of sample point / Description of suspect material	Level of ID (P/SP/ID)	Sample ID	Extent (m/m ² /m ³)	Product Type (1,2,3)	Condition (0,1,2,3)	Surface Treatment (0,1,2,3)	Asbestos Type (1,2,3)	Score	Access (IA,OA,EA)	Action (A1,A2,A3)
GROUND FLOOR (cont)												
Group room	Yes	Ceiling panels	SP	-	-	-	-	-	NA	-	-	-
		Insulation above	SP	As BS/04	-	-	-	-	NA	-	-	-
		Wall panels	SP	-	-	-	-	-	NA	-	-	-
Main Hall	Yes	Ceiling tiles	SP	-	-	-	-	-	NA	-	-	-
		Insulation above	SP	As BS/04	-	-	-	-	NA	-	-	-
		Wall panels	SP	-	-	-	-	-	NA	-	-	-
Wall heaters x 5	No	No access	-	-	-	-	-	-	-	-	-	-

Level of ID: P – Presumed, SP – Strongly Presumed, ID – Identified. **Access:** IA – Inaccessible, OA – Occasionally Accessed, EA – Easily/Regularly Accessed

Asbestos Type: NA – Non-Asbestos **Action:** A1 – Remove ASAP, A2 – Repair/Encapsulate ASAP, A3 – Leave Undisturbed and Monitor Situation

Checked by: Mr. R. Brown
Asbestos Manager

VEGA ENVIRONMENTAL CONSULTANTS LTD

ASBESTOS SURVEY - DATA RECORD SHEET - continued

Page 27 of 60

Report No: AR/02/0148 (update 10)

Date of survey: 13 & 14/02/02

Area ID	Surveyed Yes/No	Location of sample point / Description of suspect material	Level of ID (P/SP/ID)	Sample ID	Extent (m/m ² /m ³)	Product Type (1,2,3)	Condition (0,1,2,3)	Surface Treatment (0,1,2,3)	Asbestos Type (1,2,3)	Score	Access (IA,OA,EA)	Action (A1,A2,A3)
GROUND FLOOR (cont)												
Sports store	Yes	Ceiling tiles	SP	-	-	-	-	-	NA	-	-	-
		Insulation above	SP	As BS/04	-	-	-	-	NA	-	-	-
		Floor tiles	SP	As BS/13	-	-	-	-	NA	-	-	-
Uniform store	Yes	Ceiling tiles	SP	-	-	-	-	-	NA	-	-	-
Tank room above store	Yes	Tank insulation	SP	-	-	-	-	-	NA	-	-	-
		Pipe insulation	SP	As BS/04	-	-	-	-	NA	-	-	-

Level of ID: P – Presumed, SP – Strongly Presumed, ID – Identified. **Access:** IA – Inaccessible, OA – Occasionally Accessed, EA – Easily/Regularly Accessed

Asbestos Type: NA – Non-Asbestos **Action:** A1 – Remove ASAP, A2 – Repair/Encapsulate ASAP, A3 – Leave Undisturbed and Monitor Situation

Checked by: Mr. R. Brown
Asbestos Manager

VEGA ENVIRONMENTAL CONSULTANTS LTD

ASBESTOS SURVEY - DATA RECORD SHEET - continued

Page 28 of 60

Report No: AR/02/0148 (update 10)

Date of survey: 13 & 14/02/02

Area ID	Surveyed Yes/No	Location of sample point / Description of suspect material	Level of ID (P/SP/ID)	Sample ID	Extent (m/m ² / m ³)	Product Type (1,2,3)	Condition (0,1,2,3)	Surface Treatment (0,1,2,3)	Asbestos Type (1,2,3)	Score	Access (IA,OA,EA)	Action (A1,A2,A3)
GROUND FLOOR (cont)												
Main hall serving hatch	Yes	Ceiling panels	SP	-	-	-	-	-	NA	-	-	-
		Insulation above panels	SP	As BS/04	-	-	-	-	NA	-	-	-
Kitchen	Yes	<i>Ceiling panels</i>	<i>ID</i>	<i>BS/18</i>	<i>96m²</i>	<i>2</i>	<i>0</i>	<i>1</i>	<i>2</i>	<i>5</i>	<i>OA</i>	<i>REMOVED 2011</i>
		Wall panels	SP	-	-	-	-	-	NA	-	-	-
		Air conditioning units	SP	-	-	-	-	-	NA	-	-	-
		<i>Above Servery - panel</i>	<i>ID</i>	<i>BS/01 Report No. AR/05/0571 Appendix B</i>	<i>5 m²</i>	<i>2</i>	<i>1</i>	<i>0</i>	<i>2</i>	<i>5</i>	<i>OA</i>	<i>REMOVED 2011</i>
Kitchen office & WC	Yes	<i>Ceiling panels</i>	<i>SP</i>	<i>As BS/18</i>	<i>10m²</i>	<i>2</i>	<i>0</i>	<i>1</i>	<i>2</i>	<i>5</i>	<i>OA</i>	<i>REMOVED 2011</i>

Level of ID: P – Presumed, SP – Strongly Presumed, ID – Identified. **Access:** IA – Inaccessible, OA – Occasionally Accessed, EA – Easily/Regularly Accessed

Asbestos Type: NA – Non-Asbestos **Action:** A1 – Remove ASAP, A2 – Repair/Encapsulate ASAP, A3 – Leave Undisturbed and Monitor Situation

Checked by: Mr. R. Brown
Asbestos Manager

VEGA ENVIRONMENTAL CONSULTANTS LTD

ASBESTOS SURVEY - DATA RECORD SHEET - continued

Page 29 of 60

Report No: AR/02/0148 (update 10)

Date of survey: 13 & 14/02/02

Area ID	Surveyed Yes/No	Location of sample point / Description of suspect material	Level of ID (P/SP/ID)	Sample ID	Extent (m/m ² /m ³)	Product Type (1,2,3)	Condition (0,1,2,3)	Surface Treatment (0,1,2,3)	Asbestos Type (1,2,3)	Score	Access (IA,OA,EA)	Action (A1,A2,A3)
GROUND FLOOR (cont)												
Kitchen office & WC (cont)	Yes	<i>Skylights and ceiling panels</i>	<i>Yes</i>	<i>As BS/05</i>	<i>1m²</i>	<i>2</i>	<i>1</i>	<i>2</i>	<i>2</i>	<i>7</i>	<i>OA</i>	<i>REMOVED 2011</i>
		<i>WC cistern</i>	<i>SP</i>	<i>As BS/08</i>	<i>1.5m²</i>	<i>1</i>	<i>0</i>	<i>0</i>	<i>2</i>	<i>3</i>	<i>EA</i>	<i>A3</i>
		Floor covering	SP	-	-	-	-	-	-	NA	-	-
Vegetable store	Yes	<i>Ceiling panels</i>	<i>SP</i>	<i>As BS/18</i>	<i>4m²</i>	<i>2</i>	<i>0</i>	<i>1</i>	<i>2</i>	<i>5</i>	<i>OA</i>	<i>REMOVED 2011</i>
		<i>Skylights</i>	<i>Yes</i>	<i>As BS/05</i>	<i>1m²</i>	<i>2</i>	<i>1</i>	<i>2</i>	<i>2</i>	<i>7</i>	<i>OA</i>	<i>REMOVED 2011</i>
		Floor covering	SP	As BS/16	-	-	-	-	NA	-	-	-

Level of ID: P – Presumed, SP – Strongly Presumed, ID – Identified. **Access:** IA – Inaccessible, OA – Occasionally Accessed, EA – Easily/Regularly Accessed
Asbestos Type: NA – Non-Asbestos **Action:** A1 – Remove ASAP, A2 – Repair/Encapsulate ASAP, A3 – Leave Undisturbed and Monitor Situation

Checked by: Mr. R. Brown
Asbestos Manager

VEGA ENVIRONMENTAL CONSULTANTS LTD

ASBESTOS SURVEY - DATA RECORD SHEET - continued

Page 30 of 60

Report No: AR/02/0148 (update 10)

Date of survey: 13 & 14/02/02

Area ID	Surveyed Yes/No	Location of sample point / Description of suspect material	Level of ID (P/SP/ID)	Sample ID	Extent (m/m ² /m ³)	Product Type (1,2,3)	Condition (0,1,2,3)	Surface Treatment (0,1,2,3)	Asbestos Type (1,2,3)	Score	Access (IA,OA,EA)	Action (A1,A2,A3)
GROUND FLOOR (cont)												
Larder	Yes	<i>Ceiling panels</i>	<i>SP</i>	<i>As BS/18</i>	<i>8m²</i>	<i>2</i>	<i>0</i>	<i>1</i>	<i>2</i>	<i>5</i>	<i>OA</i>	<i>REMOVED 2011</i>
		Floor covering	SP	As BS/16	-	-	-	-	NA	-	-	-
Boys changing entrance lobby	Yes	Floor covering	SP	-	-	-	-	-	NA	-	-	-
Staff change	Yes	<i>Skylight panels</i>	<i>SP</i>	<i>As BS/18</i>	<i>4m²</i>	<i>2</i>	<i>0</i>	<i>1</i>	<i>2</i>	<i>5</i>	<i>OA</i>	<i>REMOVED 2011</i>
		<i>Skylight strips</i>	<i>Yes</i>	<i>As BS/05</i>	<i>1m²</i>	<i>2</i>	<i>0</i>	<i>1</i>	<i>2</i>	<i>5</i>	<i>OA</i>	<i>REMOVED 2011</i>

Level of ID: P – Presumed, SP – Strongly Presumed, ID – Identified. **Access:** IA – Inaccessible, OA – Occasionally Accessed, EA – Easily/Regularly Accessed

Asbestos Type: NA – Non-Asbestos **Action:** A1 – Remove ASAP, A2 – Repair/Encapsulate ASAP, A3 – Leave Undisturbed and Monitor Situation

Checked by: Mr. R. Brown
Asbestos Manager

VEGA ENVIRONMENTAL CONSULTANTS LTD

ASBESTOS SURVEY - DATA RECORD SHEET - continued

Page 31 of 60

Report No: AR/02/0148 (update 10)

Date of survey: 13 & 14/02/02

Area ID	Surveyed Yes/No	Location of sample point / Description of suspect material	Level of ID (P/SP/ID)	Sample ID	Extent (m/m ² /m ³)	Product Type (1,2,3)	Condition (0,1,2,3)	Surface Treatment (0,1,2,3)	Asbestos Type (1,2,3)	Score	Access (IA,OA,EA)	Action (A1,A2,A3)
GROUND FLOOR (cont)												
Staff change (cont)	Yes	Vinyl floor covering	SP	As BS/07	-	-	-	-	NA	-	-	-
Boys changing area	Yes	Ceiling panels	SP	-	-	-	-	-	NA	-	-	-
		Skylight panels	SP	-	-	-	-	-	NA	-	-	-
		<i>Skylight strips</i>	<i>SP</i>	<i>As BS/05</i>	<i>1m²</i>	<i>2</i>	<i>0</i>	<i>1</i>	<i>2</i>	<i>5</i>	<i>OA</i>	<i>REMOVED 2011</i>
Shower	Yes	<i>Ceiling panels</i>	<i>SP</i>	<i>As BS/18</i>	<i>6m²</i>	<i>2</i>	<i>0</i>	<i>1</i>	<i>2</i>	<i>5</i>	<i>OA</i>	<i>REMOVED 2002</i>

Level of ID: P – Presumed, SP – Strongly Presumed, ID – Identified. **Access:** IA – Inaccessible, OA – Occasionally Accessed, EA – Easily/Regularly Accessed

Asbestos Type: NA – Non-Asbestos **Action:** A1 – Remove ASAP, A2 – Repair/Encapsulate ASAP, A3 – Leave Undisturbed and Monitor Situation

Checked by: Mr. R. Brown
Asbestos Manager

VEGA ENVIRONMENTAL CONSULTANTS LTD

ASBESTOS SURVEY - DATA RECORD SHEET - continued

Page 32 of 60

Report No: AR/02/0148 (update 10)

Date of survey: 13 & 14/02/02

Area ID	Surveyed Yes/No	Location of sample point / Description of suspect material	Level of ID (P/SP/ID)	Sample ID	Extent (m/m ² /m ³)	Product Type (1,2,3)	Condition (0,1,2,3)	Surface Treatment (0,1,2,3)	Asbestos Type (1,2,3)	Score	Access (IA,OA,EA)	Action (A1,A2,A3)
GROUND FLOOR (cont)												
Boys changing shower (cont)	Yes	<i>Skylight panels</i>	<i>SP</i>	<i>As BS/18</i>	<i>4m²</i>	<i>2</i>	<i>2</i>	<i>1</i>	<i>2</i>	<i>7</i>	<i>OA</i>	REMOVED 2002
		<i>Skylight strips</i>	<i>SP</i>	<i>As BS/05</i>	<i>1m²</i>	<i>2</i>	<i>0</i>	<i>1</i>	<i>2</i>	<i>5</i>	<i>OA</i>	REMOVED 2002
Lobby to WC	Yes	Ceiling panels	SP	-	-	-	-	-	NA	-	-	-
WC	Yes	Ceiling panels	SP	-	-	-	-	-	NA	-	-	-
		<i>WC Cistern</i>	<i>SP</i>	<i>As BS/08</i>	<i>1.5m²</i>	<i>1</i>	<i>0</i>	<i>0</i>	<i>2</i>	<i>3</i>	<i>EA</i>	REMOVED 2011

Level of ID: P – Presumed, SP – Strongly Presumed, ID – Identified. **Access:** IA – Inaccessible, OA – Occasionally Accessed, EA – Easily/Regularly Accessed

Asbestos Type: NA – Non-Asbestos **Action:** A1 – Remove ASAP, A2 – Repair/Encapsulate ASAP, A3 – Leave Undisturbed and Monitor Situation

Checked by: Mr. R. Brown
Asbestos Manager

VEGA ENVIRONMENTAL CONSULTANTS LTD

ASBESTOS SURVEY - DATA RECORD SHEET - continued

Page 33 of 60

Report No: AR/02/0148 (update 10)

Date of survey: 13 & 14/02/02

Area ID	Surveyed Yes/No	Location of sample point / Description of suspect material	Level of ID (P/SP/ID)	Sample ID	Extent (m/m ² /m ³)	Product Type (1,2,3)	Condition (0,1,2,3)	Surface Treatment (0,1,2,3)	Asbestos Type (1,2,3)	Score	Access (IA,OA,EA)	Action (A1,A2,A3)
GROUND FLOOR (cont)												
Girls changing entrance lobby	Yes	Floor covering	SP	-	-	-	-	-	NA	-	-	-
Staff change	Yes	<i>Skylight panels</i>	<i>SP</i>	<i>As BS/18</i>	<i>4m²</i>	<i>2</i>	<i>0</i>	<i>1</i>	<i>2</i>	<i>5</i>	<i>OA</i>	<i>REMOVED AUG 2015</i>
		<i>Skylight strips</i>	<i>Yes</i>	<i>As BS/05</i>	<i>1m²</i>	<i>2</i>	<i>0</i>	<i>1</i>	<i>2</i>	<i>5</i>	<i>OA</i>	<i>REMOVED AUG 2015</i>
		Vinyl floor covering	SP	As BS/07	-	-	-	-	NA	-	-	-
Girls changing area	Yes	Ceiling panels	SP	-	-	-	-	-	NA	-	-	-
		Skylight panels	SP	-	-	-	-	-	NA	-	-	-

Level of ID: P – Presumed, SP – Strongly Presumed, ID – Identified. **Access:** IA – Inaccessible, OA – Occasionally Accessed, EA – Easily/Regularly Accessed

Asbestos Type: NA – Non-Asbestos **Action:** A1 – Remove ASAP, A2 – Repair/Encapsulate ASAP, A3 – Leave Undisturbed and Monitor Situation

Checked by: Mr. R. Brown
Asbestos Manager

VEGA ENVIRONMENTAL CONSULTANTS LTD

ASBESTOS SURVEY - DATA RECORD SHEET - continued

Page 34 of 60

Report No: AR/02/0148 (update10)

Date of survey: 13 & 14/02/02

Area ID	Surveyed Yes/No	Location of sample point / Description of suspect material	Level of ID (P/SP/ID)	Sample ID	Extent (m/m ² /m ³)	Product Type (1,2,3)	Condition (0,1,2,3)	Surface Treatment (0,1,2,3)	Asbestos Type (1,2,3)	Score	Access (IA,OA,EA)	Action (A1,A2,A3)
GROUND FLOOR (cont)												
Girls changing area (cont)		<i>Skylight strips</i>	<i>SP</i>	<i>As BS/05</i>	<i>3m²</i>	<i>2</i>	<i>0</i>	<i>1</i>	<i>2</i>	<i>5</i>	<i>OA</i>	<i>REMOVED 2011</i>
Shower	Yes	<i>Ceiling panels</i>	<i>SP</i>	<i>As BS/18</i>	<i>6m²</i>	<i>2</i>	<i>0</i>	<i>1</i>	<i>2</i>	<i>5</i>	<i>OA</i>	<i>REMOVED 2002</i>
		<i>Skylight panels</i>	<i>SP</i>	<i>As BS/18</i>	<i>4m²</i>	<i>2</i>	<i>2</i>	<i>1</i>	<i>2</i>	<i>7</i>	<i>OA</i>	<i>REMOVED 2002</i>
		<i>Skylight strips</i>	<i>SP</i>	<i>As BS/05</i>	<i>1m²</i>	<i>2</i>	<i>0</i>	<i>1</i>	<i>2</i>	<i>5</i>	<i>OA</i>	<i>REMOVED 2002</i>
Lobby to WC	Yes	Ceiling panels	SP	-	-	-	-	-	NA	-	-	-

Level of ID: P – Presumed, SP – Strongly Presumed, ID – Identified. **Access:** IA – Inaccessible, OA – Occasionally Accessed, EA – Easily/Regularly Accessed

Asbestos Type: NA – Non-Asbestos **Action:** A1 – Remove ASAP, A2 – Repair/Encapsulate ASAP, A3 – Leave Undisturbed and Monitor Situation

Checked by: Mr. R. Brown
Asbestos Manager

VEGA ENVIRONMENTAL CONSULTANTS LTD

ASBESTOS SURVEY - DATA RECORD SHEET - continued

Page 35 of 60

Report No: AR/02/0148 (update 10)

Date of survey: 13 & 14/02/02

Area ID	Surveyed Yes/No	Location of sample point / Description of suspect material	Level of ID (P/SP/ID)	Sample ID	Extent (m/m ² /m ³)	Product Type (1,2,3)	Condition (0,1,2,3)	Surface Treatment (0,1,2,3)	Asbestos Type (1,2,3)	Score	Access (IA,OA,EA)	Action (A1,A2,A3)
GROUND FLOOR (cont)												
WC	Yes	Ceiling panels	SP	-	-	-	-	-	NA	-	-	-
		<i>WC Cistern</i>	<i>SP</i>	<i>As BS/08</i>	<i>1.5m²</i>	<i>1</i>	<i>0</i>	<i>0</i>	<i>2</i>	<i>3</i>	<i>EA</i>	<i>REMOVED 2011</i>
Corridor adjacent room 6	Yes	Ceiling tiles	SP	-	-	-	-	-	NA	-	-	-
		Insulation above panels	SP	As BS/04	-	-	-	-	NA	-	-	-
		<i>Skylight strips x 3</i>	<i>SP</i>	<i>As BS/05</i>	<i>1m²</i>	<i>2</i>	<i>0</i>	<i>2</i>	<i>2</i>	<i>6</i>	<i>OA</i>	<i>REMOVED AUG 2015</i>

Level of ID: P – Presumed, SP – Strongly Presumed, ID – Identified. **Access:** IA – Inaccessible, OA – Occasionally Accessed, EA – Easily/Regularly Accessed

Asbestos Type: NA – Non-Asbestos **Action:** A1 – Remove ASAP, A2 – Repair/Encapsulate ASAP, A3 – Leave Undisturbed and Monitor Situation

Checked by: Mr. R. Brown

Asbestos Manager

VEGA ENVIRONMENTAL CONSULTANTS LTD

ASBESTOS SURVEY - DATA RECORD SHEET - continued

Page 36 of 60

Report No: AR/02/0148 (update 10)

Date of survey: 13 & 14/02/02

Area ID	Surveyed Yes/No	Location of sample point / Description of suspect material	Level of ID (P/SP/ID)	Sample ID	Extent (m/m ² /m ³)	Product Type (1,2,3)	Condition (0,1,2,3)	Surface Treatment (0,1,2,3)	Asbestos Type (1,2,3)	Score	Access (IA,OA,EA)	Action (A1,A2,A3)
GROUND FLOOR (cont)												
Corridor adjacent room 6 (cont)	Yes	Vinyl floor tiles (orange)	ID	BS/15	-	-	-	-	NA	-	-	-
	Yes	Vinyl floor tiles (brown)	SP	As BS/07	-	-	-	-	NA	-	-	-
Cupboard	Yes	Ceiling tiles	SP	-	-	-	-	-	NA	-	-	-
		Vinyl floor tiles	SP	As BS/17	-	-	-	-	NA	-	-	-

Level of ID: P – Presumed, SP – Strongly Presumed, ID – Identified. **Access:** IA – Inaccessible, OA – Occasionally Accessed, EA – Easily/Regularly Accessed

Asbestos Type: NA – Non-Asbestos **Action:** A1 – Remove ASAP, A2 – Repair/Encapsulate ASAP, A3 – Leave Undisturbed and Monitor Situation

Checked by: Mr. R. Brown
Asbestos Manager

VEGA ENVIRONMENTAL CONSULTANTS LTD

ASBESTOS SURVEY - DATA RECORD SHEET - continued

Page 37 of 60

Report No: AR/02/0148 (update 10)

Date of survey: 13 & 14/02/02

Area ID	Surveyed Yes/No	Location of sample point / Description of suspect material	Level of ID (P/SP/ID)	Sample ID	Extent (m/m ² /m ³)	Product Type (1,2,3)	Condition (0,1,2,3)	Surface Treatment (0,1,2,3)	Asbestos Type (1,2,3)	Score	Access (IA,OA,EA)	Action (A1,A2,A3)
GROUND FLOOR (cont)												
Room 6	Yes	Ceiling tiles	SP	-	-	-	-	-	NA	-	-	-
		Insulation above panels	SP	As BS/04	-	-	-	-	NA	-	-	-
		Wall panels	SP	-	-	-	-	-	NA	-	-	-
Wall heaters	No	No access	-	-	-	-	-	-	-	-	-	-
Room 5	Yes	Ceiling tiles	SP	-	-	-	-	-	NA	-	-	-
		Insulation above panels	SP	As BS/04	-	-	-	-	NA	-	-	-
		Wall panels	SP	-	-	-	-	-	NA	-	-	-

Level of ID: P – Presumed, SP – Strongly Presumed, ID – Identified. **Access:** IA – Inaccessible, OA – Occasionally Accessed, EA – Easily/Regularly Accessed

Asbestos Type: NA – Non-Asbestos **Action:** A1 – Remove ASAP, A2 – Repair/Encapsulate ASAP, A3 – Leave Undisturbed and Monitor Situation

Checked by: Mr. R. Brown

Asbestos Manager

VEGA ENVIRONMENTAL CONSULTANTS LTD

ASBESTOS SURVEY - DATA RECORD SHEET - continued

Page 38 of 60

Report No: AR/02/0148 (update10)

Date of survey: 13 & 14/02/02

Area ID	Surveyed Yes/No	Location of sample point / Description of suspect material	Level of ID (P/SP/ID)	Sample ID	Extent (m/m ² /m ³)	Product Type (1,2,3)	Condition (0,1,2,3)	Surface Treatment (0,1,2,3)	Asbestos Type (1,2,3)	Score	Access (IA,OA,EA)	Action (A1,A2,A3)
GROUND FLOOR												
Room 5 wall heaters	No	No access	-	-		-	-	-	-	-	-	-
Lobby	Yes	Ceiling tiles	SP	-	-	-	-	-	NA	-	-	-
		Insulation above panels	SP	As BS/04	-	-	-	-	NA	-	-	-
		Vinyl floor tiles	SP	As BS/07	-	-	-	-	NA	-	-	-
Room 4	Yes	Ceiling tiles	SP	-	-	-	-	-	NA	-	-	-
		Insulation above panels	SP	As BS/04	-	-	-	-	NA	-	-	-

Level of ID: P – Presumed, SP – Strongly Presumed, ID – Identified. **Access:** IA – Inaccessible, OA – Occasionally Accessed, EA – Easily/Regularly Accessed

Asbestos Type: NA – Non-Asbestos **Action:** A1 – Remove ASAP, A2 – Repair/Encapsulate ASAP, A3 – Leave Undisturbed and Monitor Situation

Checked by: Mr. R. Brown
Asbestos Manager

VEGA ENVIRONMENTAL CONSULTANTS LTD

ASBESTOS SURVEY - DATA RECORD SHEET - continued

Page 39 of 60

Report No: AR/02/0148 (update 10)

Date of survey: 13 & 14/02/02

Area ID	Surveyed Yes/No	Location of sample point / Description of suspect material	Level of ID (P/SP/ID)	Sample ID	Extent (m/m ² /m ³)	Product Type (1,2,3)	Condition (0,1,2,3)	Surface Treatment (0,1,2,3)	Asbestos Type (1,2,3)	Score	Access (IA,OA,EA)	Action (A1,A2,A3)
GROUND FLOOR (cont)												
Room 4 (cont)		Wall panels	SP	-	-	-	-	-	NA	-	-	-
Wall heaters	No	No access	-	-	-	-	-	-	-	-	-	-
Room 3	Yes	Ceiling tiles	SP	-	-	-	-	-	NA	-	-	-
		Insulation above panels	SP	As BS/04	-	-	-	-	NA	-	-	-
		Wall panels	SP	-	-	-	-	-	NA	-	-	-
Wall heaters	No	No access	-	-	-	-	-	-	-	-	-	-

Level of ID: P – Presumed, SP – Strongly Presumed, ID – Identified. **Access:** IA – Inaccessible, OA – Occasionally Accessed, EA – Easily/Regularly Accessed

Asbestos Type: NA – Non-Asbestos **Action:** A1 – Remove ASAP, A2 – Repair/Encapsulate ASAP, A3 – Leave Undisturbed and Monitor Situation

Checked by: Mr. R. Brown
Asbestos Manager

VEGA ENVIRONMENTAL CONSULTANTS LTD

ASBESTOS SURVEY - DATA RECORD SHEET - continued

Page 40 of 60

Report No: AR/02/0148 (update 10)

Date of survey: 13 & 14/02/02

Area ID	Surveyed Yes/No	Location of sample point / Description of suspect material	Level of ID (P/SP/ID)	Sample ID	Extent (m/m ² /m ³)	Product Type (1,2,3)	Condition (0,1,2,3)	Surface Treatment (0,1,2,3)	Asbestos Type (1,2,3)	Score	Access (IA,OA,EA)	Action (A1,A2,A3)
GROUND FLOOR (cont)												
Room 2	Yes	Ceiling tiles	SP	-	-	-	-	-	NA	-	-	-
		Insulation above panels	SP	As BS/04	-	-	-	-	NA	-	-	-
		Wall panels	SP	-	-	-	-	-	NA	-	-	-
Wall heaters	No	No access	-	-	-	-	-	-	-	-	-	-
Room 1	Yes	Ceiling tiles	SP	-	-	-	-	-	NA	-	-	-
		Insulation above panels	SP	As BS/04	-	-	-	-	NA	-	-	-
		Wall panels	SP	-	-	-	-	-	NA	-	-	-
Wall heaters	No	No access	-	-	-	-	-	-	-	-	-	-

Level of ID: P – Presumed, SP – Strongly Presumed, ID – Identified. **Access:** IA – Inaccessible, OA – Occasionally Accessed, EA – Easily/Regularly Accessed

Asbestos Type: NA – Non-Asbestos **Action:** A1 – Remove ASAP, A2 – Repair/Encapsulate ASAP, A3 – Leave Undisturbed and Monitor Situation

Checked by: Mr. R. Brown
Asbestos Manager

VEGA ENVIRONMENTAL CONSULTANTS LTD

ASBESTOS SURVEY - DATA RECORD SHEET - continued

Page 41 of 60

Report No: AR/02/0148 (update 10)

Date of survey: 13 & 14/02/02

Area ID	Surveyed Yes/No	Location of sample point / Description of suspect material	Level of ID (P/SP/ID)	Sample ID	Extent (m/m ² /m ³)	Product Type (1,2,3)	Condition (0,1,2,3)	Surface Treatment (0,1,2,3)	Asbestos Type (1,2,3)	Score	Access (IA,OA,EA)	Action (A1,A2,A3)
GROUND FLOOR (cont)												
Boys cloaks	Yes	Ceiling tiles	SP	-	-	-	-	-	NA	-	-	-
		Insulation above panels	SP	As BS/04	-	-	-	-	NA	-	-	-
		<i>Skylight strips x 1</i>	<i>SP</i>	<i>As BS/05</i>	<i>1m²</i>	<i>2</i>	<i>0</i>	<i>1</i>	<i>2</i>	<i>5</i>	<i>OA</i>	REMOVED AUG 2005
		Floor tiles	SP	As BS/09	-	-	-	-	NA	-	-	-
Boys WC	Yes	Ceiling tiles	SP	-	-	-	-	-	NA	-	-	-
		Insulation above panels	SP	As BS/04	-	-	-	-	NA	-	-	-
		<i>Skylight strips x 2</i>	<i>SP</i>	<i>As BS/05</i>	<i>1m²</i>	<i>2</i>	<i>0</i>	<i>0</i>	<i>2</i>	<i>4</i>	<i>OA</i>	REMOVED AUG 2005

Level of ID: P – Presumed, SP – Strongly Presumed, ID – Identified. **Access:** IA – Inaccessible, OA – Occasionally Accessed, EA – Easily/Regularly Accessed

Asbestos Type: NA – Non-Asbestos **Action:** A1 – Remove ASAP, A2 – Repair/Encapsulate ASAP, A3 – Leave Undisturbed and Monitor Situation

Checked by: Mr. R. Brown
Asbestos Manager

VEGA ENVIRONMENTAL CONSULTANTS LTD

ASBESTOS SURVEY - DATA RECORD SHEET - continued

Page 42 of 60

Report No: AR/02/0148 (update 10)

Date of survey: 13 & 14/02/02

Area ID	Surveyed Yes/No	Location of sample point / Description of suspect material	Level of ID (P/SP/ID)	Sample ID	Extent (m/m ² /m ³)	Product Type (1,2,3)	Condition (0,1,2,3)	Surface Treatment (0,1,2,3)	Asbestos Type (1,2,3)	Score	Access (IA,OA,EA)	Action (A1,A2,A3)
GROUND FLOOR (cont)												
Boys WC (cont)	Yes	<i>WC Cistern</i>	<i>SP</i>	<i>As BS/08</i>	<i>1.5m²</i>	<i>1</i>	<i>0</i>	<i>0</i>	<i>2</i>	<i>3</i>	<i>EA</i>	REMOVED AUG 2005
		Floor tiles	SP	As BS/16	-	-	-	-	NA	-	-	-
Girls WC	Yes	Ceiling tiles	SP	-	-	-	-	-	NA	-	-	-
		Insulation above panels	SP	As BS/04	-	-	-	-	NA	-	-	-
		<i>WC Cistern x 5</i>	<i>SP</i>	<i>As BS/08</i>	<i>1.5m²</i>	<i>1</i>	<i>0</i>	<i>0</i>	<i>2</i>	<i>3</i>	<i>EA</i>	REMOVED AUG 2005
		Floor tiles	SP	As BS/16	-	-	-	-	NA	-	-	-

Level of ID: P – Presumed, SP – Strongly Presumed, ID – Identified. **Access:** IA – Inaccessible, OA – Occasionally Accessed, EA – Easily/Regularly Accessed

Asbestos Type: NA – Non-Asbestos **Action:** A1 – Remove ASAP, A2 – Repair/Encapsulate ASAP, A3 – Leave Undisturbed and Monitor Situation

Checked by: Mr. R. Brown
Asbestos Manager

VEGA ENVIRONMENTAL CONSULTANTS LTD

ASBESTOS SURVEY - DATA RECORD SHEET - continued

Page 43 of 60

Report No: AR/02/0148 (update 10)

Date of survey: 13 & 14/02/02

Area ID	Surveyed Yes/No	Location of sample point / Description of suspect material	Level of ID (P/SP/ID)	Sample ID	Extent (m/m ² /m ³)	Product Type (1,2,3)	Condition (0,1,2,3)	Surface Treatment (0,1,2,3)	Asbestos Type (1,2,3)	Score	Access (IA,OA,EA)	Action (A1,A2,A3)
GROUND FLOOR (cont)												
Girls cloaks	Yes	Ceiling tiles	SP	-	-	-	-	-	NA	-	-	-
		Insulation above panels	SP	As BS/04	-	-	-	-	NA	-	-	-
		<i>Skylight strips x 1</i>	<i>SP</i>	<i>As BS/05</i>	<i>1m²</i>	<i>2</i>	<i>0</i>	<i>1</i>	<i>2</i>	<i>5</i>	<i>OA</i>	REMOVED AUG 2005
		Floor tiles	SP	As BS/09	-	-	-	-	NA	-	-	-
Disabled WC	Yes	No suspect material identified	-	-	-	-	-	-	-	-	-	-

Level of ID: P – Presumed, SP – Strongly Presumed, ID – Identified. **Access:** IA – Inaccessible, OA – Occasionally Accessed, EA – Easily/Regularly Accessed

Asbestos Type: NA – Non-Asbestos **Action:** A1 – Remove ASAP, A2 – Repair/Encapsulate ASAP, A3 – Leave Undisturbed and Monitor Situation

Checked by: Mr. R. Brown
Asbestos Manager

VEGA ENVIRONMENTAL CONSULTANTS LTD

ASBESTOS SURVEY - DATA RECORD SHEET - continued

Page 44 of 60

Report No: AR/02/0148 (update 10)

Date of survey: 13 & 14/02/02

Area ID	Surveyed Yes/No	Location of sample point / Description of suspect material	Level of ID (P/SP/ID)	Sample ID	Extent (m/m ² /m ³)	Product Type (1,2,3)	Condition (0,1,2,3)	Surface Treatment (0,1,2,3)	Asbestos Type (1,2,3)	Score	Access (IA,OA,EA)	Action (A1,A2,A3)
GROUND FLOOR (cont)												
Corridor adjacent class 1	Yes	Ceiling tiles	SP	-	-	-	-	-	NA	-	-	-
		Insulation above panels	SP	As BS/04	-	-	-	-	NA	-	-	-
		Wall panels	SP	-	-	-	-	-	NA	-	-	-
		<i>Skylight strips x 3</i>	<i>SP</i>	<i>As BS/05</i>	<i>1m²</i>	<i>2</i>	<i>0</i>	<i>1</i>	<i>2</i>	<i>5</i>	<i>OA</i>	<i>REMOVED AUG 2015</i>
		Vinyl floor tiles	SP	As BS/09	-	-	-	-	NA	-	-	-

Level of ID: P – Presumed, SP – Strongly Presumed, ID – Identified. **Access:** IA – Inaccessible, OA – Occasionally Accessed, EA – Easily/Regularly Accessed
Asbestos Type: NA – Non-Asbestos **Action:** A1 – Remove ASAP, A2 – Repair/Encapsulate ASAP, A3 – Leave Undisturbed and Monitor Situation

Checked by: Mr. R. Brown
Asbestos Manager

VEGA ENVIRONMENTAL CONSULTANTS LTD

ASBESTOS SURVEY - DATA RECORD SHEET - continued

Page 45 of 60

Report No: AR/02/0148 (update 10)

Date of survey: 13 & 14/02/02

Area ID	Surveyed Yes/No	Location of sample point / Description of suspect material	Level of ID (P/SP/ID)	Sample ID	Extent (m/m ² /m ³)	Product Type (1,2,3)	Condition (0,1,2,3)	Surface Treatment (0,1,2,3)	Asbestos Type (1,2,3)	Score	Access (IA,OA,EA)	Action (A1,A2,A3)
GROUND FLOOR (cont)												
Cupboard adjacent room 1	Yes	Ceiling tiles	SP	-	-	-	-	-	NA	-	-	-
		Insulation above panels	SP	As BS/04	-	-	-	-	NA	-	-	-
		Vinyl floor tiles	SP	As BS/16	-	-	-	-	NA	-	-	-

Level of ID: P – Presumed, SP – Strongly Presumed, ID – Identified. **Access:** IA – Inaccessible, OA – Occasionally Accessed, EA – Easily/Regularly Accessed

Asbestos Type: NA – Non-Asbestos **Action:** A1 – Remove ASAP, A2 – Repair/Encapsulate ASAP, A3 – Leave Undisturbed and Monitor Situation

Checked by: Mr. R. Brown
Asbestos Manager

VEGA ENVIRONMENTAL CONSULTANTS LTD

ASBESTOS SURVEY - DATA RECORD SHEET - continued

Page 46 of 60

Report No: AR/02/0148 (update 10)

Date of survey: 13 & 14/02/02

Area ID	Surveyed Yes/No	Location of sample point / Description of suspect material	Level of ID (P/SP/ID)	Sample ID	Extent (m/m ² /m ³)	Product Type (1,2,3)	Condition (0,1,2,3)	Surface Treatment (0,1,2,3)	Asbestos Type (1,2,3)	Score	Access (IA,OA,EA)	Action (A1,A2,A3)
WHITE MOBILE`												
Porch/entrance lobby	Yes	No suspect material identified	-	-	-	-	-	-	-	-	-	-
		Ceiling panels	SP	-	-	-	-	-	NA	-	-	-
		Walls	SP	-	-	-	-	-	NA	-	-	-
Class	Yes	Ceiling panels	SP	-	-	-	-	-	NA	-	-	-
		Walls	SP	-	-	-	-	-	NA	-	-	-
		Heater panels	ID	BS/19	-	-	-	-	NA	-	-	-
Cupboard	Yes	Ceiling panels	SP	-	-	-	-	-	NA	-	-	-
		Walls	SP	-	-	-	-	-	NA	-	-	-

Level of ID: P – Presumed, SP – Strongly Presumed, ID – Identified. **Access:** IA – Inaccessible, OA – Occasionally Accessed, EA – Easily/Regularly Accessed
Asbestos Type: NA – Non-Asbestos **Action:** A1 – Remove ASAP, A2 – Repair/Encapsulate ASAP, A3 – Leave Undisturbed and Monitor Situation

Checked by: Mr. R. Brown
Asbestos Manager

VEGA ENVIRONMENTAL CONSULTANTS LTD

ASBESTOS SURVEY - DATA RECORD SHEET - continued

Page 47 of 60

Report No: AR/02/0148 (update 10)

Date of survey: 13 & 14/02/02

Area ID	Surveyed Yes/No	Location of sample point / Description of suspect material	Level of ID (P/SP/ID)	Sample ID	Extent (m/m ² /m ³)	Product Type (1,2,3)	Condition (0,1,2,3)	Surface Treatment (0,1,2,3)	Asbestos Type (1,2,3)	Score	Access (IA,OA,EA)	Action (A1,A2,A3)
WHITE MOBILE`												
External	Yes	Roof felt	ID	BS/20	-	-	-	-	NA	-	-	-
		Walls	SP	-	-	-	-	-	NA	-	-	-
		Gas cupboard	SP	As BS/19	-	-	-	-	NA	-	-	-
		Panel to flue	SP	As BS/19	-	-	-	-	NA	-	-	-

Level of ID: P – Presumed, SP – Strongly Presumed, ID – Identified. **Access:** IA – Inaccessible, OA – Occasionally Accessed, EA – Easily/Regularly Accessed

Asbestos Type: NA – Non-Asbestos **Action:** A1 – Remove ASAP, A2 – Repair/Encapsulate ASAP, A3 – Leave Undisturbed and Monitor Situation

Checked by: Mr. R. Brown
Asbestos Manager

VEGA ENVIRONMENTAL CONSULTANTS LTD

ASBESTOS SURVEY - DATA RECORD SHEET - continued

Page 48 of 60

Report No: AR/02/0148 (update 10)

Date of survey: 13 & 14/02/02

Area ID	Surveyed Yes/No	Location of sample point / Description of suspect material	Level of ID (P/SP/ID)	Sample ID	Extent (m/m ² /m ³)	Product Type (1,2,3)	Condition (0,1,2,3)	Surface Treatment (0,1,2,3)	Asbestos Type (1,2,3)	Score	Access (IA,OA,EA)	Action (A1,A2,A3)
GREEN MOBILE												
Lobby	Yes	Ceiling panels	SP	-	-	-	-	-	NA	-	-	-
		Walls	SP	-	-	-	-	-	NA	-	-	-
Class	Yes	Ceiling panels	SP	-	-	-	-	-	NA	-	-	-
		Walls	SP	-	-	-	-	-	NA	-	-	-
		Heater panels	ID	BS/19	-	-	-	-	NA	-	-	-
Cupboard		Ceiling panels	SP	-	-	-	-	-	NA	-	-	-
		Walls	SP	-	-	-	-	-	NA	-	-	-

Level of ID: P – Presumed, SP – Strongly Presumed, ID – Identified. **Access:** IA – Inaccessible, OA – Occasionally Accessed, EA – Easily/Regularly Accessed

Asbestos Type: NA – Non-Asbestos **Action:** A1 – Remove ASAP, A2 – Repair/Encapsulate ASAP, A3 – Leave Undisturbed and Monitor Situation

Checked by: Mr. R. Brown
Asbestos Manager

VEGA ENVIRONMENTAL CONSULTANTS LTD

ASBESTOS SURVEY - DATA RECORD SHEET - continued

Page 49 of 60

Report No: AR/02/0148 (update 10)

Date of survey: 13 & 14/02/02

Area ID	Surveyed Yes/No	Location of sample point / Description of suspect material	Level of ID (P/SP/ID)	Sample ID	Extent (m/m ² /m ³)	Product Type (1,2,3)	Condition (0,1,2,3)	Surface Treatment (0,1,2,3)	Asbestos Type (1,2,3)	Score	Access (IA,OA,EA)	Action (A1,A2,A3)
GREEN MOBILE`												
External	Yes	Roof felt	SP	As BS/20	-	-	-	-	NA	-	-	-
		Wall covering	ID	BS/21	-	-	-	-	NA	-	-	-

Level of ID: P – Presumed, SP – Strongly Presumed, ID – Identified. **Access:** IA – Inaccessible, OA – Occasionally Accessed, EA – Easily/Regularly Accessed

Asbestos Type: NA – Non-Asbestos **Action:** A1 – Remove ASAP, A2 – Repair/Encapsulate ASAP, A3 – Leave Undisturbed and Monitor Situation

Checked by: Mr. R. Brown
Asbestos Manager

VEGA ENVIRONMENTAL CONSULTANTS LTD

ASBESTOS SURVEY - DATA RECORD SHEET - continued

Page 50 of 60

Report No: AR/02/0148 (update 10)

Date of survey: 13 & 14/02/02

Area ID	Surveyed Yes/No	Location of sample point / Description of suspect material	Level of ID (P/SP/ID)	Sample ID	Extent (m/m ² /m ³)	Product Type (1,2,3)	Condition (0,1,2,3)	Surface Treatment (0,1,2,3)	Asbestos Type (1,2,3)	Score	Access (IA,OA,EA)	Action (A1,A2,A3)
MAIN SCHOOL BUILDING												
External	Yes	Soffits	SP	-	-	-	-	-	NA	-	-	-
		Fascia	SP	-	-	-	-	-	NA	-	-	-
		Canopy's	SP	-	-	-	-	-	NA	-	-	-
		Roof felt	SP	As BS/20	-	-	-	-	NA	-	-	-
		<i>Boiler flue x 2</i>	<i>ID</i>	<i>BS/22</i>	<i>10m²</i>	<i>1</i>	<i>0</i>	<i>1</i>	<i>2</i>	<i>4</i>	<i>OA</i>	<i>REMOVED AUG 2015</i>
		<i>Tiles on roof above entrance</i>	<i>ID</i>	<i>Bs/23</i>	<i>10m²</i>	<i>1</i>	<i>0</i>	<i>1</i>	<i>1</i>	<i>3</i>	<i>OA</i>	<i>REMOVED AUG 2015</i>

Level of ID: P – Presumed, SP – Strongly Presumed, ID – Identified. **Access:** IA – Inaccessible, OA – Occasionally Accessed, EA – Easily/Regularly Accessed

Asbestos Type: NA – Non-Asbestos **Action:** A1 – Remove ASAP, A2 – Repair/Encapsulate ASAP, A3 – Leave Undisturbed and Monitor Situation

Checked by: Mr. R. Brown
Asbestos Manager

ADDITIONAL INFORMATION: Report No: AR/02/0148 (update 10)

Survey Specification:

Type 2 Survey:

Definition: **Type 2 Survey (Standard Sampling, Identification and Assessment):** The analyst will do a general walk around the whole area and look at all readily accessible areas. From his experience the analyst will attempt to identify any asbestos and/or asbestos products without the need for sampling. The areas will be assessed and where appropriate will be **presumed** to contain asbestos. Where it appears highly likely that materials will contain asbestos, there should be a **strong presumption** that it does. All materials which are presumed to contain asbestos must be assessed using the Material Assessment Algorithm. Where practicable representative samples will be taken from all materials in accordance with full sampling frequency recommendations and analysed. Sample points will be made safe but redecoration will not be carried out. (see Appendix A)

On the 13 and 14 February 2002, a type 2 survey was undertaken to identify and report on the presence and condition of asbestos based materials at Highfields County Middle School, Prudhoe, Northumberland.

BOILER HOUSE



The ceiling tiles in the boiler room are asbestos insulation board (sample BS/01). These tiles are in a good condition and paint sealed. It is recommended that drilling, fixing and sanding to these tiles be prohibited.

REMOVED AUG 2005



The white flue pipe in the boiler room is attached to the external flue cowl (sample BS/22). It is a cement-based material containing asbestos. This flue pipe is in a good condition and presents no hazard to health in its current condition.

REMOVED AUG 2015

ADDITIONAL INFORMATION: Report No: AR/02/0148 (update 10)

MAIN SCHOOL BUILDING



The internal strips to the skylights throughout the school are asbestos insulation board (sample BS/05). These are in good condition, paint sealed and presents no hazard to health their current condition

REMOVED AUG 2015



The toilet cisterns in the male and female staff toilets have an asbestos content (sample BS/08). These cisterns are in a good condition and create no hazard to health in their current condition.

REMOVED AUG 2007



The ceiling panels in the electrical switch cupboards are asbestos insulation board (sample BS/10). These panels are in a good condition but unsealed. It is recommended that these panels be encapsulated at a convenient time with a polymeric flame retardant sealant

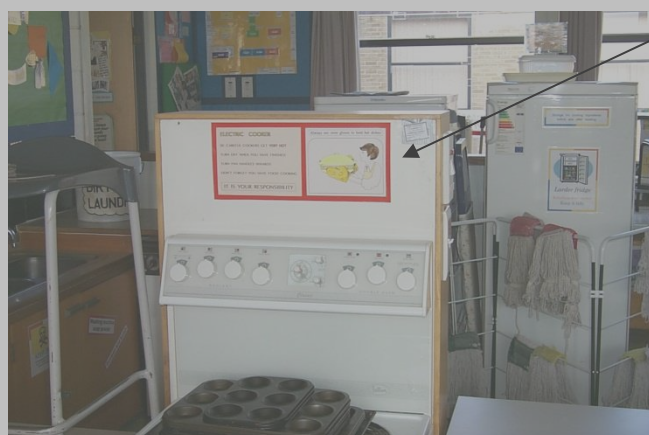
REMOVED NOVEMBER 2003

ADDITIONAL INFORMATION: Report No: AR/02/0148 (update 10)

MAIN SCHOOL BUILDING (cont)



Also in the electrical switch cupboards it is strongly presumed that the electrical distribution boards may have asbestos rope material flash guards fitted to fuse holders. It is recommended that these flash guards be replaced at a convenient time with a non-asbestos product.



There are two cooker back panels in class 16 home craft (sample BS/11). These panels are asbestos insulation board and are generally in a good condition although some minor damage is evident in places. It is recommended that the damaged areas be repaired/encapsulated with a proprietary sealant.

REMOVED NOVEMBER 2003



The cisterns fitted throughout the school buildings on this site contain asbestos (as sample BS/08). These cisterns are in a good condition and are unlikely to release any asbestos fibres during normal use.

REMOVED AUG 2015

ADDITIONAL INFORMATION: Report No: AR/02/0148 (update 10)

MAIN SCHOOL BUILDING (cont)



The ceiling tiles in the kitchen, kitchen office, WC, larder and vegetable store are asbestos insulation board. (sample BS/18). These tiles are in a good condition and paint sealed. It is recommend that drilling, fixing and sanding to these tiles be prohibited.

REMOVED 2011



The skylight panels in the girls' and boys' Changing Rooms are asbestos insulation board (as sample BS/05). These are mainly in a good condition. It is recommended that drilling, fixing and sanding to these panels be prohibited.

REMOVED 2011



The skylight panels and skylight strips in the male and female Changing Rooms are asbestos insulation board (as samples BS05 and BS/18). These are mainly in a good condition. It is recommended that drilling, fixing and sanding to these panels be prohibited.

REMOVED AUG 2015

ADDITIONAL INFORMATION: Report No: AR/02/0148 (update 10)

EXTERNAL



There are two flue pipe cowls on the roof of the main building. These cowls are cement-based material containing asbestos (sample BS/22). These are in a good condition and present no hazard to health in their current condition.

REMOVED AUG 2015



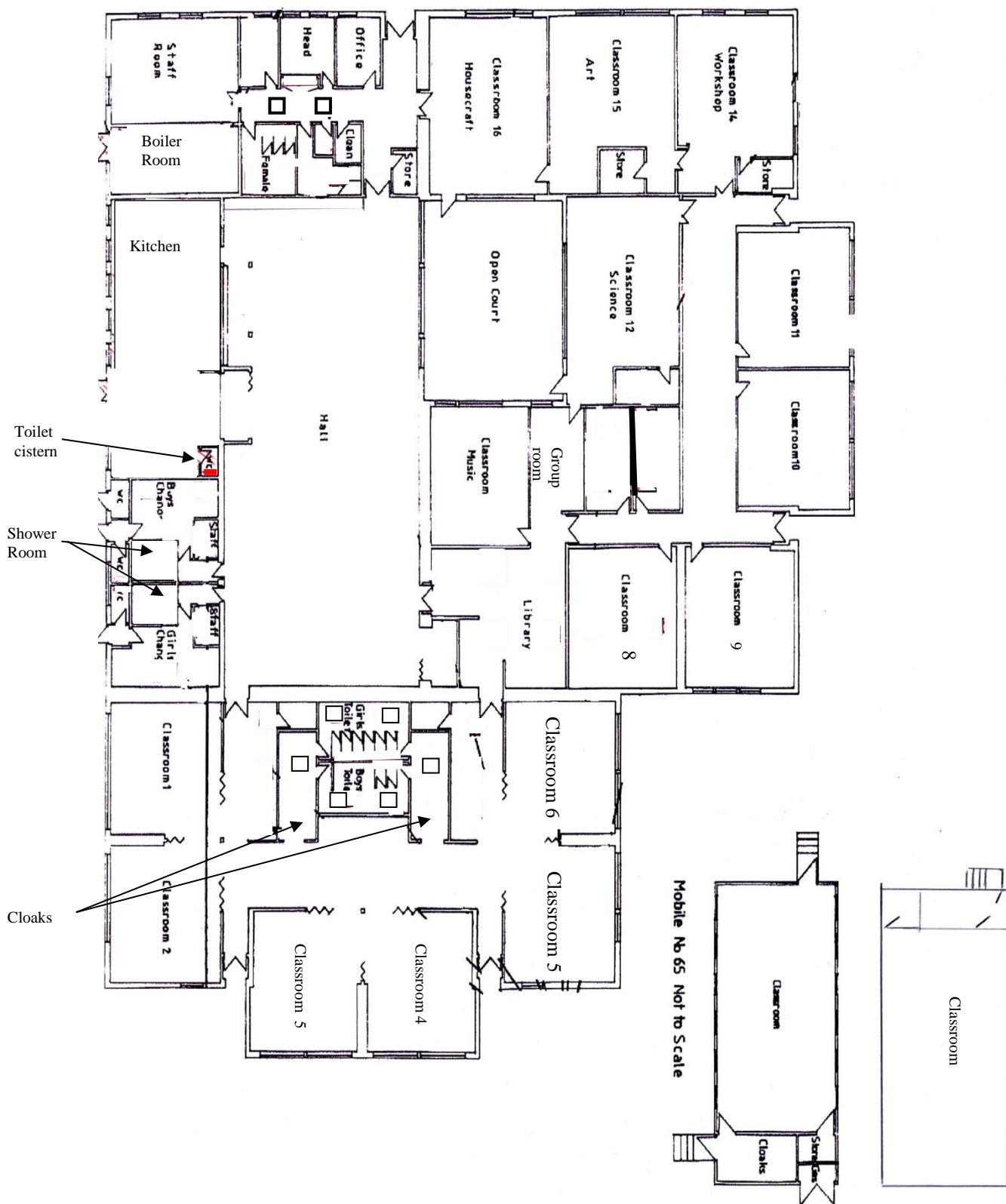
The roof tiles above the main entrance to the school are cement-based material containing asbestos (sample BS/23). These tiles are in a good condition and present no hazard to health in their current condition.

REMOVED AUG 2015

Note: All work with asbestos based materials should be undertaken by a licensed asbestos removal company, with relevant air sampling carried out by a laboratory accredited by UKAS for both sampling and airborne fibre counting

Checked by: Mr. R. Brown
Asbestos Manager

ADDITIONAL INFORMATION: Report No: AR/02/0148 (update 10)



CONFIDENTIAL

ASBESTOS ANALYSIS REPORT

Page 57 of 60

Report No:	AR/02/0148 (update 10)	Date of Issue:	02/09/15
Client:	Mr R Brown Northumberland County Council County Hall MORPETH Northumberland NE61 2EF	Date Sample Received:	13/02/02
		Date Analysed:	18/02/02
		Laboratory:	Permanent
		Order/Contract No.	R Brown

Origin of bulk sample: Prudhoe Highfields Middle School, Prudhoe, Northumberland

Samples taken by: P Dean **Company:** Vega Ltd

Sample ID	Location of Sample Point	Analysis
BS/01	Ground floor boiler house – ceiling panels	<u>Amosite</u> – (brown asbestos) REMOVED AUG 2005
BS/02	Ground floor boiler house – boiler flue	No asbestos detected
BS/03	Ground floor boiler house – debris beneath boiler	No asbestos detected

Analysis was carried out in accordance with MDHS 77: June 1994 by documented in-house procedure Number ASB/3.

VEGA cannot accept responsibility for the information on, or condition of, bulk samples taken/supplied by non Vega personnel or the effect such information or condition may have on the analysis of fibrous content.

Checked by: Mr. R. Brown
Asbestos Manager

CONFIDENTIAL

ASBESTOS ANALYSIS REPORT - CONTINUED

Page 58 of 60

Report No. AR/02/0148 (update 10)

Sample ID	Location of Sample Point	Analysis
BS/04	Ground floor boiler house – Pipe insulation	No asbestos detected
BS/05	Main entrance lobby – skylight panel strips	Amosite Chrysotile – (white asbestos) REMOVED AUG 2015
BS/06	Main entrance lobby – vinyl floor tiles	No asbestos detected
BS/07	Cleaners cupboard – vinyl floor tiles	No asbestos detected
BS/08	Female staff WC –cisterns	REMOVED AUG 2007
BS/09	Male staff WC – vinyl floor tiles	No asbestos detected
BS/10	Electrical cupboard – ceiling panels	Amosite Chrysotile REMOVED NOV 2003
BS/11	Class 16 home craft - cooker backing boards	Chrysotile REMOVED NOV 2003

Analysis was carried out in accordance with MDHS 77: June 1994 by documented in-house procedure Number ASB/3.

VEGA cannot accept responsibility for the information on, or condition of, bulk samples taken/supplied by non Vega personnel or the effect such information or condition may have on the analysis of fibrous content.

Checked by: Mr. R. Brown
Asbestos Manager

CONFIDENTIAL

ASBESTOS ANALYSIS REPORT - CONTINUED

Page 59 of 60

Report No. AR/02/0148 (update 02)

Sample ID	Location of Sample Point	Analysis
BS/12	Class 16 home craft – vinyl floor tiles	No asbestos detected
BS/13	Class 15 art room – vinyl floor tiles	No asbestos detected
BS/14	Class 14 woodwork workshop – flame fast brazing hearth	No asbestos detected
BS/15	Classroom 11 – vinyl floor tiles	No asbestos detected
BS/16	Girls WC (adjacent class 8) floor tiles	No asbestos detected
BS/17	Class 12 science – vinyl floor tiles	No asbestos detected
BS/18	Kitchen – ceiling panels	Amosite REMOVED 2011
BS/19	White mobile – panel behind heater	No asbestos detected
BS/20	White and green mobile	No asbestos detected

Analysis was carried out in accordance with MDHS 77: June 1994 by documented in-house procedure Number ASB/3.

VEGA cannot accept responsibility for the information on, or condition of, bulk samples taken/supplied by non Vega personnel or the effect such information or condition may have on the analysis of fibrous content.

Checked by: Mr. R. Brown
Asbestos Manager

CONFIDENTIAL

ASBESTOS ANALYSIS REPORT - CONTINUED

Page 60 of 60

Report No. AR/02/0148 (update 10)

Sample ID	Location of Sample Point	Analysis
BS/21	Green and white mobile – roof felt	No asbestos detected
BS/22	External to main building - flue pipe cowls from boiler room	Chrysotile REMOVED AUG 2015
BS/23	External – roof tile	Chrysotile REMOVED AUG 2015

Analysis was carried out in accordance with MDHS 77: June 1994 by documented in-house procedure Number ASB/3.

VEGA cannot accept responsibility for the information on, or condition of, bulk samples taken/supplied by non Vega personnel or the effect such information or condition may have on the analysis of fibrous content.

Checked by: Mr. R. Brown
Asbestos Manager

APPENDIX A

VEGA ENVIRONMENTAL CONSULTANTS LTD

MATERIAL ASSESSMENT ALGORITHM – FOR TYPE 1/TYPE 2 SURVEY		
Sample Variable	Score	Main Examples
Product Type	1	Asbestos reinforced composites (plastic, resins, mastics, roofing felts, vinyl floor tiles, semi-rigid paints or decorative finishes, asbestos cement etc.)
	2	Asbestos insulating board, mill boards, other low density insulation boards, asbestos textiles, gaskets, ropes and woven textiles, asbestos paper and felt.
	3	Thermal insulation (e.g. pipe and boiler lagging), sprayed asbestos, loose asbestos, asbestos mattresses and packing.
Condition	0	Good condition: no visible damage
	1	Low damage: a few scratches or surface marks; broken edges on boards, tiles etc.
	2	Medium damage: significant breakage of materials or several small areas where material has been damaged revealing loose asbestos fibres.
	3	High damage or delamination of materials, sprays and thermal insulation. Visible asbestos debris.
Surface Treatment	0	Composite materials containing asbestos: reinforced plastics, resins, vinyl tiles, painted or asbestos cement (with exposed face painted or encapsulated)
	1	Enclosed sprays and lagging, AIB (with exposed face painted or encapsulated), asbestos cement sheets etc.
	2	Unsealed AIB, or encapsulated lagging and sprays.
	3	Unsealed lagging and sprays.
Asbestos Type	1	Chrysotile.
	2	Amphibole asbestos excluding crocidolite.
	3	Crocidolite.

INITIAL ACTION PLAN			
MATERIAL ASSESSMENT SCORE	ACCESS		
	Inaccessible	Occasionally Accessed	Easily/Regularly Accessed
Very Low Risk: < 5	A3	A3	A3
Low Risk: 5-6	A3	A3	A2
Medium Risk: 7-9	A3	A2	A1
High Risk: 10-12	A2	A1	A1

APPENDIX B

CONFIDENTIAL

ADDITIONAL INFORMATION: Report No: AR/05/0571

ASBESTOS ANALYSIS REPORT

Report No: AR/02/0148 (update 10) **Date of Issue:** 02/09/15

Client: Mr R Brown
Northumberland County Council
County Hall
Morpeth
Northumberland
NE61 2EF **Date Sample Received:** 10/05/05

Date Analysed: 11/05/05

Laboratory: Permanent

Order/Contract No. -

Origin of bulk sample: Highfield's Middle School, Prudhoe, Northumberland

Samples taken by: J. Warwick **Company:** Vega Ltd

Samples analysed by H. J. Curry

Sample ID	Location of Sample Point	Analysis
BS/01	Main Kitchen, Above Servery - panel	Amosite – (brown asbestos) REMOVED AUG 2015

Analysis was carried out in accordance with MDHS 77: June 1994 by documented in-house procedure Number ASB/3.

VEGA cannot accept responsibility for the information on, or condition of, bulk samples taken/supplied by non-Vega personnel or the effect such information or condition may have on the analysis of fibrous content.

Checked by: Mr. R. Brown
Asbestos Manager