

Material Assessment Record

Number: 1304197-0077

Sample Information		Material Risk Assessment	
Date:	17/04/2009	Product:	2
Surveyor:	Andrew Thomson	Damage/Deterioration:	Medium
Building:	Brynmawr Market Hall (Cinema), Block 1	Surface Treatment:	Unsealed Board
Location:	Internal	Asbestos Type:	Amosite
Floor:	1	Material Score:	8
Room/Location:	029	Material Risk:	Medium
Position:	On Floor of Loft Above	Priority Risk Assessment*	
Description:	Loose Panel	Normal Occupant Activity:	0
Product Type:	Insulating Board	Likelihood of Disturbance:	1
Extent:	< 10m2 or < 10m run	Human Exposure Potential:	0
Identification:	Sampled	Maintenance Activity:	1
Samples Ref:	1304197/0077	Priority Risk/Score:	2
Visually Similar to Sample:		Total Risk:	10

Management Actions	Timescale	Completed	Date of Completion

Control Actions	Timescale	Completed	Date of Completion
Remove/Dispose as ACM	1 Months	No	

Other Comments

Area now fully accessed using triple ladders during re-visit.

ACM TO BE REMOVED AND AREA ENVIRONMENTALLY CLEANED BY A LICENSED ASBESTOS REMOVAL CONTRACTOR.

* The Priority Risk Assessment should be completed/confirmed by the Duty Holder



Material Assessment Record

Number: 1304197-0079

Sample Information		Material Risk Assessment	
Date:	17/04/2009	Product:	2
Surveyor:	Andrew Thomson	Damage/Deterioration:	Low
Building:	Brynmawr Market Hall (Cinema), Block 1	Surface Treatment:	Unsealed Board
Location:	Internal	Asbestos Type:	Non Asbestos
Floor:	0	Material Score:	
Room/Location:	015	Material Risk:	Non Asbestos
Position:	Floor Of Roof Void Above	Priority Risk Assessment*	
Description:	Panels	Normal Occupant Activity:	
Product Type:	Insulating Board	Likelihood of Disturbance:	
Extent:	> 50m2 or > 50m run	Human Exposure Potential:	
Identification:	Sampled	Maintenance Activity:	
Samples Ref:	1304197/0079	Priority Risk/Score:	0
Visually Similar to Sample:		Total Risk:	0

Management Actions	Timescale	Completed	Date of Completion

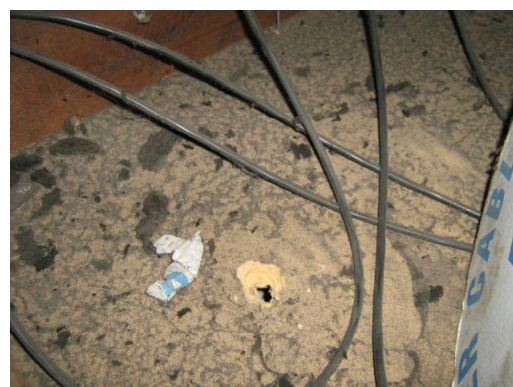
Control Actions	Timescale	Completed	Date of Completion

Other Comments

Area now fully accessed using triple ladders during re-visit.

ACM TO BE REMOVED AND AREA ENVIRONMENTALLY CLEANED BY A LICENSED ASBESTOS REMOVAL CONTRACTOR.

* The Priority Risk Assessment should be completed/confirmed by the Duty Holder



Appendix C

Floor Plans(1 cover page and 1 Page)

Floor/	Block 1 and 4-
Area:-	Ground & First Floor

Created By:- K.Johns




Date:- 08/09/08

Revision:- Issue 2

Revision Date:- 27-07-09

Key:-

- | | |
|---|---------------------------|
|  | Asbestos insulating board |
|  | Asbestos cement |
|  | Asbestos lagging |
|  | Asbestos floor tiles |
|  | Asbestos artex |
|  | Asbestos toilet cistern |
|  | Asbestos gasket/rope |
|  | Asbestos paper |
|  | Asbestos bitumen |

 Negative
 Positive
 No Access

This plan must be read in conjunction with the accompanying report/database

NOT TO SCALE



Connought Compliance Services Ltd,
Connought House,
Coerphilly Business Park,
Coerphilly. CF83 3GG
Telephone: +44 (0)29 2085 2852
Facsimile: +44 (0)29 2086 7738