

Asbestos Material & Priority Assessment Report

at

001 - Penn Hospital TAJ52



ASBESTOS

Survey Conducted by: Riverside Environmental Services Ltd

Date: 9/12/2016

Survey Report Number J099842

Organisation O2

Main Block - Penn 05

Sample Record Number: J070863PS350

Lower Ground 05-500, Circulation – Stairs 052-05-00-581

Position Location :

Inspection Date	12/9/2016		
Component:	Inaccessible	Sample No.	J070863PS350
Survey Type	Management	Surveyor	Richard Farmer
Asbestos type	Asbestos		
Quantity of Material	0lm		

Material Assessment

Material	3	Extent of Damage	3
Surface Treatment	3	Asbestos Type	3
Material Assessment Total:	12		

No Photograph	Comments: This material/area should be treated as containing asbestos until proven otherwise.
----------------------	---

Priority Assessment

Main Type of Activity	1	Extent of Material	1
Maintenance Activity	0	Location	2
Accessibility	0	Number of Occupants	1
Frequency of use	3	Average time is in use	0
Frequency of maintenance activity	2	Risk Assessment Total:	4
Total Score:	16	Moderate Risk	

Actions Arising	Due Date	Est. Cost
Label & Manage	14-11-2016	£0
Mark Area as out of bounds	14-11-2016	£0

Re-Inspection Schedule:	Status	Due Date
	 Due after six Months	12-9-2017

Beeches Training and Education Centre 01

Sample Record Number: FU000448

Ground Floor 00, Lobby 052-01-00-022

Position Location :Stairs

Inspection Date	12/9/2016		
Component:	Grey Stair Nosing	Sample No.	FU000448
Survey Type	Type 2	Surveyor	Richard Farmer
Asbestos type	Chrysotile		
Quantity of Material	1lm		

Material Assessment

Material	1	Extent of Damage	1
Surface Treatment	0	Asbestos Type	1
Material Assessment Total:	3	D	



Comments:

This material requires no immediate attention. Incorporate ACM into management plan until removal.

Priority Assessment

Main Type of Activity	0	Extent of Material	1
Maintenance Activity	0	Location	1
Accessibility	0	Number of Occupants	2
Frequency of use	0	Average time is in use	0
Frequency of maintenance activity	0	Risk Assessment Total:	2
Total Score:	5	Sound	

Actions Arising	Due Date	Est. Cost
Label & Manage	11-11-2016	£0

Re-Inspection Schedule:	Status	Due Date
	 Due after six Months	12-9-2017

Beeches Training and Education Centre 01

Sample Record Number: J070863PS121

First Floor 01, Circulation Corridor 052-01-01-014

Position Location :External

Inspection Date	12/9/2016		
Component:	Roof Tiles	Sample No.	J070863PS121
Survey Type	Management	Surveyor	Richard Farmer
Asbestos type	Chrysotile		
Quantity of Material	20m²		

Material Assessment

Material	1	Extent of Damage	0
Surface Treatment	1	Asbestos Type	1
Material Assessment Total:	3	D	



Comments:

Located to the roof of the room. Incorporate ACM into management plan until removal.

Priority Assessment

Main Type of Activity	0	Extent of Material	2
Maintenance Activity	0	Location	0
Accessibility	0	Number of Occupants	0
Frequency of use	0	Average time is in use	0
Frequency of maintenance activity	2	Risk Assessment Total:	2
Total Score:	5	Sound	

Actions Arising	Due Date	Est. Cost
Label & Manage	11-11-2016	£0

Re-Inspection Schedule:	Status	Due Date
	 Due after six Months	12-9-2017

Kitchen Stores - Penn 06

Sample Record Number: FU000452

Ground Floor 00, Kitchen 052-06-00-011

Position Location :High level windows

Inspection Date	12/9/2016		
Component:	Rope Seals	Sample No.	FU000452
Survey Type	Management	Surveyor	Richard Farmer
Asbestos type	Chrysotile		
Quantity of Material	50lm		

Material Assessment

Material	2	Extent of Damage	0
Surface Treatment	2	Asbestos Type	1
Material Assessment Total:	5	C	



Comments:

Incorporate ACM into management plan until removal.

Priority Assessment

Main Type of Activity	1	Extent of Material	2
Maintenance Activity	0	Location	2
Accessibility	0	Number of Occupants	0
Frequency of use	0	Average time is in use	0
Frequency of maintenance activity	2	Risk Assessment Total:	3
Total Score:	8	Slight Risk	

Actions Arising	Due Date	Est. Cost
Label & Manage	11-11-2016	£0

Re-Inspection Schedule:	Status	Due Date
	 Due after six Months	12-9-2017

Kitchen Stores - Penn 06

Sample Record Number: J054907PS137

Ground Floor 00, Plant Room 052-06-00-001

Position Location : Pipework

Inspection Date	12/9/2016		
Component:	Gaskets	Sample No.	J054907PS137
Survey Type	Type 2	Surveyor	Richard Farmer
Asbestos type	Chrysotile		
Quantity of Material	9N°		

Material Assessment

Material	2	Extent of Damage	1
Surface Treatment	1	Asbestos Type	1
Material Assessment Total:	5	C	



Comments:

This material requires no immediate attention. Incorporate ACM into management plan until removal.

Priority Assessment

Main Type of Activity	0	Extent of Material	0
Maintenance Activity	0	Location	2
Accessibility	0	Number of Occupants	0
Frequency of use	0	Average time is in use	0
Frequency of maintenance activity	1	Risk Assessment Total:	2
Total Score:	7	Sound	

Actions Arising	Due Date	Est. Cost
Label & Manage	14-11-2016	£0

Re-Inspection Schedule:	Status	Due Date
	 Due after six Months	12-9-2017

Main Block - Penn 05

Sample Record Number: VCFU000445-G69

Lower Ground 05-500, Plant Room 052-05-00-570

Position Location :

Inspection Date	12/9/2016		
Component:	Profile Cement Shuttering	Sample No.	VCFU000445-G69
Survey Type	Management	Surveyor	Richard Farmer
Asbestos type	Chrysotile		
Quantity of Material	1m²		

Material Assessment

Material	1	Extent of Damage	1
Surface Treatment	1	Asbestos Type	1
Material Assessment Total:	4	C	



Comments:

Incorporate Asbestos containing materials into management plan until removal.

Priority Assessment

Main Type of Activity	0	Extent of Material	2
Maintenance Activity	0	Location	2
Accessibility	0	Number of Occupants	0
Frequency of use	0	Average time is in use	0
Frequency of maintenance activity	0	Risk Assessment Total:	1
Total Score:	5	Sound	

Actions Arising	Due Date	Est. Cost
Label & Manage	11-11-2016	£0

Re-Inspection Schedule:	Status	Due Date
	 Due after six Months	12-9-2017

Main Block - Penn 05

Sample Record Number: FD005297

Ground Floor 05-400, Circulation Corridor 052-05-00-353

Position Location :Ceiling Void

Inspection Date	12/9/2016		
Component:	Cement Sheet Shuttering	Sample No.	FD005297
Survey Type	Refurbishment	Surveyor	Richard Farmer, RS
Asbestos type	Chrysotile		
Quantity of Material	8m²		

Material Assessment

Material	1	Extent of Damage	1
Surface Treatment	1	Asbestos Type	1
Material Assessment Total:	4	C	



Comments: Incorporate item into management plan.
--

Priority Assessment

Main Type of Activity	0	Extent of Material	1
Maintenance Activity	0	Location	2
Accessibility	0	Number of Occupants	1
Frequency of use	3	Average time is in use	1
Frequency of maintenance activity	0	Risk Assessment Total:	3
Total Score:	7	Sound	

Actions Arising	Due Date	Est. Cost
Label & Manage	11-11-2016	£0

Re-Inspection Schedule:	Status	Due Date
	 Due after six Months	12-9-2017

Main Block - Penn 05

Sample Record Number: VCFD0005297A

Ground Floor 05-400, Assessment Room 052-05-00-333

Position Location : Ceiling Void

Inspection Date	12/9/2016		
Component:	Cement Sheet Shuttering	Sample No.	VCFD0005297A
Survey Type	Refurbishment	Surveyor	Richard Farmer, RS
Asbestos type	Chrysotile		
Quantity of Material	10m²		

Material Assessment

Material	1	Extent of Damage	1
Surface Treatment	1	Asbestos Type	1
Material Assessment Total:	4	C	



Comments:

Incorporate item into management plan.

Priority Assessment

Main Type of Activity	0	Extent of Material	1
Maintenance Activity	0	Location	2
Accessibility	0	Number of Occupants	1
Frequency of use	3	Average time is in use	1
Frequency of maintenance activity	0	Risk Assessment Total:	3
Total Score:	7	Sound	

Actions Arising	Due Date	Est. Cost
Label & Manage	11-11-2016	£0

Re-Inspection Schedule:	Status	Due Date
	 Due after six Months	12-9-2017

Main Block - Penn 05

Sample Record Number: VCFD0005297B

Ground Floor 05-400, W.C. Ensuite 052-05-00-334

Position Location :Ceiling Void

Inspection Date	12/9/2016		
Component:	Cement Sheet Shuttering	Sample No.	VCFD0005297B
Survey Type	Refurbishment	Surveyor	Richard Farmer, RS
Asbestos type	Chrysotile		
Quantity of Material	10m²		

Material Assessment

Material	1	Extent of Damage	1
Surface Treatment	1	Asbestos Type	1
Material Assessment Total:	4	C	



Comments:

Incorporate item into management plan.

Priority Assessment

Main Type of Activity	1	Extent of Material	1
Maintenance Activity	0	Location	2
Accessibility	0	Number of Occupants	1
Frequency of use	3	Average time is in use	0
Frequency of maintenance activity	0	Risk Assessment Total:	3
Total Score:	7	Sound	

Actions Arising	Due Date	Est. Cost
Label & Manage	11-11-2016	£0

Re-Inspection Schedule:	Status	Due Date
	 Due after six Months	12-9-2017

Main Block - Penn 05

Sample Record Number: VCFD005297C

Ground Floor 05-400, W.C. Assisted 052-05-00-335

Position Location :Ceiling Void

Inspection Date	12/9/2016		
Component:	Cement Sheet Shuttering	Sample No.	VCFD005297C
Survey Type	Refurbishment	Surveyor	Richard Farmer, RS
Asbestos type	Chrysotile		
Quantity of Material	10m²		

Material Assessment

Material	1	Extent of Damage	1
Surface Treatment	1	Asbestos Type	1
Material Assessment Total:	4	C	



Comments:

Incorporate item into management plan.

Priority Assessment

Main Type of Activity	1	Extent of Material	1
Maintenance Activity	0	Location	2
Accessibility	0	Number of Occupants	1
Frequency of use	3	Average time is in use	0
Frequency of maintenance activity	0	Risk Assessment Total:	3
Total Score:	7	Sound	

Actions Arising	Due Date	Est. Cost
Label & Manage	11-11-2016	£0

Re-Inspection Schedule:	Status	Due Date
	 Due after six Months	12-9-2017

Main Block - Penn 05

Sample Record Number: VCFU000445-G36

Ground Floor 05-400, Office 052-05-00-336

Position Location :Upper Deck within Ceiling Void

Inspection Date	12/11/2016		
Component:	Cement Profile	Sample No.	VCFU000445-G36
Survey Type	Type 2	Surveyor	Richard Farmer
Asbestos type	Chrysotile		
Quantity of Material	20m²		

Material Assessment

Material	1	Extent of Damage	1
Surface Treatment	1	Asbestos Type	1
Material Assessment Total:	4	C	



Comments:

Incorporate item into management plan.

Priority Assessment

Main Type of Activity	0	Extent of Material	2
Maintenance Activity	0	Location	3
Accessibility	0	Number of Occupants	0
Frequency of use	0	Average time is in use	0
Frequency of maintenance activity	1	Risk Assessment Total:	3
Total Score:	7	Sound	

Actions Arising	Due Date	Est. Cost
Label & Manage	11-11-2016	£0

Re-Inspection Schedule:	Status	Due Date
	 Due after six Months	12-9-2017

Main Block - Penn 05

Sample Record Number: FU000446

Ground Floor 05-400, Store Cleaners 052-05-00-337

Position Location :Ceiling Void

Inspection Date	12/9/2016		
Component:	Insulating Board Shuttering	Sample No.	FU000446
Survey Type	Type 2	Surveyor	Richard Farmer
Asbestos type	Amosite		
Quantity of Material	0.5lm		

Material Assessment

Material	2	Extent of Damage	1
Surface Treatment	2	Asbestos Type	2
Material Assessment Total:	7	B	



Comments:

Encapsulate as soon as possible.

Priority Assessment

Main Type of Activity	0	Extent of Material	1
Maintenance Activity	0	Location	3
Accessibility	0	Number of Occupants	0
Frequency of use	0	Average time is in use	0
Frequency of maintenance activity	1	Risk Assessment Total:	2
Total Score:	9	Slight Risk	

Actions Arising	Due Date	Est. Cost
Encapsulate, Label & Manage	11-11-2016	£0

Re-Inspection Schedule:	Status	Due Date
	 Due after six Months	12-9-2017

Main Block - Penn 05

Sample Record Number: FU000447

Ground Floor 05-400, Store Cleaners 052-05-00-337

Position Location :Upper Deck

Inspection Date	12/9/2016		
Component:	Flat cement sheet	Sample No.	FU000447
Survey Type	Type 2	Surveyor	Richard Farmer
Asbestos type	Chrysotile		
Quantity of Material	2m²		

Material Assessment

Material	1	Extent of Damage	1
Surface Treatment	1	Asbestos Type	1
Material Assessment Total:	4	C	



Comments:

Incorporate into management plan.

Priority Assessment

Main Type of Activity	0	Extent of Material	1
Maintenance Activity	0	Location	3
Accessibility	0	Number of Occupants	0
Frequency of use	0	Average time is in use	0
Frequency of maintenance activity	1	Risk Assessment Total:	2
Total Score:	6	Sound	

Actions Arising	Due Date	Est. Cost
Label & Manage	11-11-2016	£0

Re-Inspection Schedule:	Status	Due Date
	 Due after six Months	12-9-2017

Main Block - Penn 05

Sample Record Number: VCFU000445-G37

Ground Floor 05-400, Store Cleaners 052-05-00-337

Position Location :Upper Deck within Ceiling Void

Inspection Date	12/9/2016		
Component:	Profile Cement Sheet	Sample No.	VCFU000445-G37
Survey Type	Type 2	Surveyor	Richard Farmer
Asbestos type	Chrysotile		
Quantity of Material	5m²		

Material Assessment

Material	1	Extent of Damage	1
Surface Treatment	1	Asbestos Type	1
Material Assessment Total:	4	C	



Comments:
Incorporate into management plan.

Priority Assessment

Main Type of Activity	0	Extent of Material	1
Maintenance Activity	0	Location	3
Accessibility	0	Number of Occupants	0
Frequency of use	0	Average time is in use	0
Frequency of maintenance activity	1	Risk Assessment Total:	2
Total Score:	6	Sound	

Actions Arising	Due Date	Est. Cost
Label & Manage	11-11-2016	£0

Re-Inspection Schedule:	Status	Due Date
	 Due after six Months	12-9-2017

Main Block - Penn 05

Sample Record Number: VCFU000445-1-G37

Ground Floor 05-400, Store Cleaners 052-05-00-337

Position Location : Concrete Beams within Ceiling Void

Inspection Date	12/9/2016		
Component:	Profile Cement Sheet Debris	Sample No.	VCFU000445-1-G37
Survey Type	Type 2	Surveyor	Richard Farmer
Asbestos type	Chrysotile		
Quantity of Material	0lm		

Material Assessment

Material	1	Extent of Damage	3
Surface Treatment	1	Asbestos Type	1
Material Assessment Total:	6	C	



Comments:

Remove as soon as possible.

Priority Assessment

Main Type of Activity	0	Extent of Material	0
Maintenance Activity	0	Location	3
Accessibility	0	Number of Occupants	0
Frequency of use	0	Average time is in use	0
Frequency of maintenance activity	1	Risk Assessment Total:	2
Total Score:	8	Slight Risk	

Actions Arising	Due Date	Est. Cost
Removal of Debris from Floor, wall etc, with type H vacuum (If extensive then by licensed contractor)	11-11-2016	£0

Re-Inspection Schedule:	Status	Due Date
	 Due after six Months	12-9-2017

Main Block - Penn 05

Sample Record Number: J070863-GL1 PS156

Ground Floor 05-400, Circulation Lift 052-05-00-355

Position Location :Lift

Inspection Date	12/9/2016		
Component:	Inaccessible	Sample No.	J070863-GL1 PS156
Survey Type	Management	Surveyor	Richard Farmer
Asbestos type	Crocidolite		
Quantity of Material	1N°		

Material Assessment

Material	3	Extent of Damage	3
Surface Treatment	3	Asbestos Type	3
Material Assessment Total:	12		

No Photograph	Comments:
	This area should be treated as containing asbestos until proven otherwise.

Priority Assessment

Total Score:	12	Slight Risk
---------------------	-----------	--------------------

Actions Arising	Due Date	Est. Cost
Label & Manage	11-11-2016	£0
Mark Area as out of bounds	11-11-2016	£0

Re-Inspection Schedule:	Status	Due Date
	 Due after six Months	12-9-2017

Main Block - Penn 05

Sample Record Number: VCFU000447-G40

Ground Floor 05-400, Cupboard Electrical 052-05-00-339

Position Location : Ceiling

Inspection Date	12/9/2016		
Component:	Cement Sheet Panel	Sample No.	VCFU000447-G40
Survey Type	Type 2	Surveyor	Richard Farmer
Asbestos type	Chrysotile		
Quantity of Material	2m²		

Material Assessment

Material	1	Extent of Damage	2
Surface Treatment	1	Asbestos Type	1
Material Assessment Total:	5	C	



Comments:

Repair or remove as soon as possible.

Priority Assessment

Main Type of Activity	1	Extent of Material	1
Maintenance Activity	1	Location	2
Accessibility	1	Number of Occupants	0
Frequency of use	0	Average time is in use	3
Frequency of maintenance activity	1	Risk Assessment Total:	4
Total Score:	9	Slight Risk	

Actions Arising	Due Date	Est. Cost
Repair Damaged Section	11-11-2016	£0
Encapsulate, Label & Manage	11-11-2016	£0

Re-Inspection Schedule:	Status	Due Date
	 Due after six Months	12-9-2017

Main Block - Penn 05

Sample Record Number: VCFU000445

Ground Floor 05-400, Store 052-05-00-340

Position Location :Upper Deck

Inspection Date	12/9/2016		
Component:	Cement Profile Sheets	Sample No.	VCFU000445
Survey Type	Management	Surveyor	Richard Farmer
Asbestos type	Chrysotile		
Quantity of Material	15m²		

Material Assessment

Material	1	Extent of Damage	1
Surface Treatment	1	Asbestos Type	1
Material Assessment Total:	4	C	



Comments:

Incorporate asbestos containing materials into management plan until removal.

Priority Assessment

Total Score:	4	Sound
---------------------	----------	--------------

Actions Arising	Due Date	Est. Cost
Label & Manage	14-11-2016	£0

Re-Inspection Schedule:	Status	Due Date
	 Due after six Months	12-9-2017

Main Block - Penn 05

Sample Record Number: VCFU000445-GC4

Ground Floor 05-400, Kitchen 052-05-00-341

Position Location :Upper Deck

Inspection Date	12/9/2016		
Component:	Profile Cement Sheet	Sample No.	VCFU000445-GC4
Survey Type	Management	Surveyor	Richard Farmer
Asbestos type	Chrysotile		
Quantity of Material	8m²		

Material Assessment

Material	1	Extent of Damage	1
Surface Treatment	1	Asbestos Type	1
Material Assessment Total:	4	C	



Comments:

Incorporate asbestos containing materials into management plan until removal.

Priority Assessment

Total Score:	4	Sound
---------------------	----------	--------------

Actions Arising	Due Date	Est. Cost
Label & Manage	14-11-2016	£0

Re-Inspection Schedule:	Status	Due Date
	 Due after six Months	12-9-2017

Main Block - Penn 05

Sample Record Number: FU000445

Ground Floor 05-400, Circulation Corridor 052-05-00-351

Position Location : Within Ceiling Void

Inspection Date	12/9/2016		
Component:	Cement Profile Sheets	Sample No.	FU000445
Survey Type	Type 2	Surveyor	Richard Farmer
Asbestos type	Chrysotile		
Quantity of Material	50m²		

Material Assessment

Material	1	Extent of Damage	1
Surface Treatment	1	Asbestos Type	1
Material Assessment Total:	4	C	



Comments:

Incorporate into management plan.

Priority Assessment

Main Type of Activity	0	Extent of Material	2
Maintenance Activity	0	Location	3
Accessibility	0	Number of Occupants	0
Frequency of use	0	Average time is in use	0
Frequency of maintenance activity	1	Risk Assessment Total:	3
Total Score:	7	Sound	

Actions Arising	Due Date	Est. Cost
Label & Manage	11-11-2016	£0

Re-Inspection Schedule:	Status	Due Date
	 Due after six Months	12-9-2017

Main Block - Penn 05

Sample Record Number: VCFU000459*R-01

Ground Floor 05-400, Circulation Corridor 052-05-00-347

Position Location : Bitumen Roof Felt

Inspection Date	12/9/2016		
Component:	Bitumen Roof Felt	Sample No.	VCFU000459*R-01
Survey Type	Management	Surveyor	Richard Farmer
Asbestos type	Chrysotile		
Quantity of Material	100m²		

Material Assessment

Material	1	Extent of Damage	1
Surface Treatment	0	Asbestos Type	1
Material Assessment Total:	3	D	



Comments:

Located to the roof of therapy corridor. Incorporate item into management plan.

Priority Assessment

Main Type of Activity	0	Extent of Material	3
Maintenance Activity	0	Location	2
Accessibility	0	Number of Occupants	0
Frequency of use	0	Average time is in use	0
Frequency of maintenance activity	2	Risk Assessment Total:	3
Total Score:	6	Sound	

Actions Arising	Due Date	Est. Cost
Label & Manage	14-11-2016	£0

Re-Inspection Schedule:	Status	Due Date
	 Due after six Months	12-9-2017

Main Block - Penn 05

Sample Record Number: VCFU000445-GC1

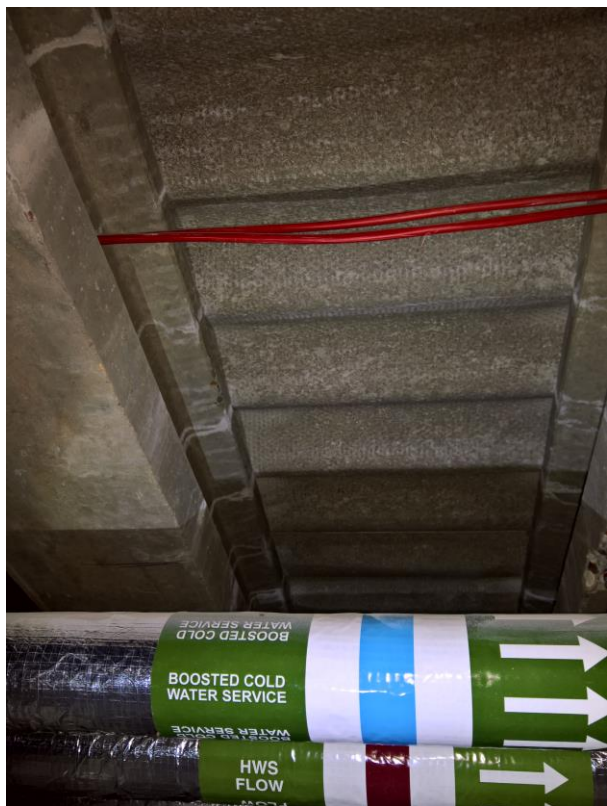
Ground Floor 05-400, Circulation Corridor 052-05-00-045

Position Location :Upper Deck

Inspection Date	12/9/2016		
Component:	Cement Profile Sheet	Sample No.	VCFU000445-GC1
Survey Type	Type 2	Surveyor	Richard Farmer
Asbestos type	Chrysotile		
Quantity of Material	12m²		

Material Assessment

Material	1	Extent of Damage	1
Surface Treatment	1	Asbestos Type	1
Material Assessment Total:	4	C	



Comments:
Incorporate item into management plan.

Priority Assessment

Main Type of Activity	1	Extent of Material	2
Maintenance Activity	1	Location	2
Accessibility	1	Number of Occupants	0
Frequency of use	3	Average time is in use	0
Frequency of maintenance activity	1	Risk Assessment Total:	5
Total Score:	9	Slight Risk	

Actions Arising	Due Date	Est. Cost
Label & Manage	14-11-2016	£0

Re-Inspection Schedule:	Status	Due Date
	 Due after six Months	12-9-2017

Main Block - Penn 05

Sample Record Number: VCFU000445-G28

Ground Floor 05-400, Store Cleaners 052-05-00-044

Position Location : Ceiling Void

Inspection Date	12/9/2016		
Component:	Cement Profile Roof Sheet	Sample No.	VCFU000445-G28
Survey Type	Management	Surveyor	Richard Farmer
Asbestos type	Chrysotile		
Quantity of Material	10m²		

Material Assessment

Material	1	Extent of Damage	2
Surface Treatment	1	Asbestos Type	1
Material Assessment Total:	5	C	



Comments:

Repair or remove damaged sections and incorporate ACM into management plan until removal.

Priority Assessment

Main Type of Activity	0	Extent of Material	1
Maintenance Activity	0	Location	2
Accessibility	0	Number of Occupants	0
Frequency of use	0	Average time is in use	1
Frequency of maintenance activity	2	Risk Assessment Total:	2
Total Score:	7	Sound	

Actions Arising	Due Date	Est. Cost
Encapsulate, Label & Manage	11-11-2016	£0

Re-Inspection Schedule:	Status	Due Date
	 Due after six Months	12-9-2017

Main Block - Penn 05

Sample Record Number: J070863-PS204

Ground Floor 05-400, Interview Room 052-05-00-001

Position Location :

Inspection Date	12/9/2016		
Component:	Presumed Asbestos	Sample No.	J070863-PS204
Survey Type	Management	Surveyor	Richard Farmer
Asbestos type	Crocidolite		
Quantity of Material	10lm		

Material Assessment

Material	3	Extent of Damage	3
Surface Treatment	3	Asbestos Type	3
Material Assessment Total:	12		

No Photograph	Comments:
	This material/area should be treated as containing asbestos until proven otherwise.

Priority Assessment

Main Type of Activity	1	Extent of Material	1
Maintenance Activity	0	Location	2
Accessibility	1	Number of Occupants	0
Frequency of use	0	Average time is in use	1
Frequency of maintenance activity	2	Risk Assessment Total:	3
Total Score:	15	Moderate Risk	

Actions Arising	Due Date	Est. Cost
Mark Area as out of bounds	14-11-2016	£0

Re-Inspection Schedule:	Status	Due Date
	 Due after six Months	12-9-2017

Main Block - Penn 05

Sample Record Number: VCFU000445-G-04

Ground Floor 05-400, W.C. 052-05-00-004

Position Location :Ceiling Void

Inspection Date	12/9/2016		
Component:	Profile Cement Roof Sheets	Sample No.	VCFU000445-G-04
Survey Type	Management	Surveyor	Richard Farmer
Asbestos type	Chrysotile		
Quantity of Material	6m²		

Material Assessment

Material	2	Extent of Damage	0
Surface Treatment	1	Asbestos Type	1
Material Assessment Total:	4	C	



Comments:

Incorporate asbestos containing materials into management plan until removal.

Priority Assessment

Main Type of Activity	0	Extent of Material	1
Maintenance Activity	0	Location	2
Accessibility	1	Number of Occupants	1
Frequency of use	0	Average time is in use	0
Frequency of maintenance activity	2	Risk Assessment Total:	2
Total Score:	6	Sound	

Actions Arising	Due Date	Est. Cost
Label & Manage	14-11-2016	£0

Re-Inspection Schedule:	Status	Due Date
	 Due after six Months	12-9-2017

Main Block - Penn 05

Sample Record Number: VCFU000445G-C10

Ground Floor 05-400, Kitchen 052-05-00-338

Position Location :Upper Deck within Ceiling Void

Inspection Date	12/9/2016		
Component:	Profile Cement Sheet	Sample No.	VCFU000445G-C10
Survey Type	Type 2	Surveyor	Richard Farmer
Asbestos type	Chrysotile		
Quantity of Material	24m²		

Material Assessment

Material	1	Extent of Damage	1
Surface Treatment	1	Asbestos Type	1
Material Assessment Total:	4	C	



Comments:

Incorporate asbestos containing materials into management plan until removal.

Priority Assessment

Main Type of Activity	0	Extent of Material	2
Maintenance Activity	0	Location	2
Accessibility	1	Number of Occupants	0
Frequency of use	0	Average time is in use	0
Frequency of maintenance activity	0	Risk Assessment Total:	2
Total Score:	6	Sound	

Actions Arising	Due Date	Est. Cost
Label & Manage	14-11-2016	£0

Re-Inspection Schedule:	Status	Due Date
	 Due after six Months	12-9-2017

Main Block - Penn 05

Sample Record Number: VC FU000459

Lofts & Plant Rooms 01, Plant Room 052-05-01-004

Position Location :Roof

Inspection Date	12/9/2016		
Component:	Bitumen Roof Felt	Sample No.	VC FU000459
Survey Type	Management	Surveyor	Richard Farmer
Asbestos type	Chrysotile		
Quantity of Material	100m²		

Material Assessment

Material	1	Extent of Damage	1
Surface Treatment	0	Asbestos Type	1
Material Assessment Total:	3	D	



Comments:

Visually consistent sample. Label and manage, this material requires no immediate attention.

Priority Assessment

Main Type of Activity	0	Extent of Material	2
Maintenance Activity	0	Location	0
Accessibility	0	Number of Occupants	0
Frequency of use	0	Average time is in use	0
Frequency of maintenance activity	0	Risk Assessment Total:	1
Total Score:	4	Sound	

Actions Arising	Due Date	Est. Cost
Label & Manage	9-12-2016	£0

Re-Inspection Schedule:	Status	Due Date
	 Due after six Months	12-9-2017

Main Block - Penn 05

Sample Record Number: J054907-PS187

Lofts & Plant Rooms 01, Plant Room 052-05-01-001

Position Location : Pipework

Inspection Date	12/9/2016		
Component:	Gaskets	Sample No.	J054907-PS187
Survey Type	Management	Surveyor	Richard Farmer
Asbestos type	Asbestos		
Quantity of Material	0N°		

Material Assessment

Material	1	Extent of Damage	0
Surface Treatment	0	Asbestos Type	1
Material Assessment Total:	2	D	



Comments:

Label and manage. This material requires no immediate attention.

Priority Assessment

Main Type of Activity	0	Extent of Material	0
Maintenance Activity	0	Location	1
Accessibility	0	Number of Occupants	1
Frequency of use	0	Average time is in use	0
Frequency of maintenance activity	0	Risk Assessment Total:	0
Total Score:	2	Sound	

Actions Arising	Due Date	Est. Cost
Label & Manage	14-11-2016	£0

Re-Inspection Schedule:	Status	Due Date
	 Due after six Months	12-9-2017

Main Block - Penn 05

Sample Record Number: FU000457

Lofts & Plant Rooms 01, Plant Room 052-05-01-001

Position Location : Wall

Inspection Date	12/9/2016		
Component:	Insulating Board Panel	Sample No.	FU000457
Survey Type	Management	Surveyor	Richard Farmer
Asbestos type	Amosite		
Quantity of Material	2m²		

Material Assessment

Material	2	Extent of Damage	2
Surface Treatment	2	Asbestos Type	2
Material Assessment Total:	8	B	



Comments:

Encapsulate as soon as is practicable.

Priority Assessment

Main Type of Activity	0	Extent of Material	1
Maintenance Activity	0	Location	1
Accessibility	0	Number of Occupants	1
Frequency of use	0	Average time is in use	0
Frequency of maintenance activity	0	Risk Assessment Total:	1
Total Score:	9	Slight Risk	

Actions Arising	Due Date	Est. Cost
Encapsulate, Label & Manage	14-11-2016	£0

Re-Inspection Schedule:	Status	Due Date
	 Due after six Months	12-9-2017

Main Block - Penn 05

Sample Record Number: VC FU000457P01

Lofts & Plant Rooms 01, Plant Room 052-05-01-001

Position Location :Steel column

Inspection Date	12/9/2016		
Component:	Cladding	Sample No.	VC FU000457P01
Survey Type	Management	Surveyor	Richard Farmer
Asbestos type	Amosite		
Quantity of Material	5lm		

Material Assessment

Material	2	Extent of Damage	2
Surface Treatment	2	Asbestos Type	2
Material Assessment Total:	8	B	



Comments:

Encapsulate as soon as is practicable.

Priority Assessment

Main Type of Activity	0	Extent of Material	1
Maintenance Activity	0	Location	1
Accessibility	1	Number of Occupants	1
Frequency of use	0	Average time is in use	0
Frequency of maintenance activity	0	Risk Assessment Total:	1
Total Score:	9	Slight Risk	

Actions Arising	Due Date	Est. Cost
Encapsulate, Label & Manage	14-11-2016	£0

Re-Inspection Schedule:	Status	Due Date
	 Due after six Months	12-9-2017

Main Block - Penn 05

Sample Record Number: FU000458

Lofts & Plant Rooms 01, Plant Room 052-05-01-001

Position Location :Redundant Vents

Inspection Date	12/9/2016		
Component:	Textile Rope Seal	Sample No.	FU000458
Survey Type	Management	Surveyor	Richard Farmer
Asbestos type	Chrysotile		
Quantity of Material	2N°		

Material Assessment

Material	2	Extent of Damage	0
Surface Treatment	2	Asbestos Type	1
Material Assessment Total:	5	C	



Comments:

Label and manage: the material requires no immediate attention.

Priority Assessment

Main Type of Activity	0	Extent of Material	0
Maintenance Activity	0	Location	1
Accessibility	0	Number of Occupants	1
Frequency of use	0	Average time is in use	0
Frequency of maintenance activity	0	Risk Assessment Total:	0
Total Score:	5	Sound	

Actions Arising	Due Date	Est. Cost

Re-Inspection Schedule:	Status	Due Date
	 Due after six Months	12-9-2017

Main Block - Penn 05

Sample Record Number: FU000459

Lofts & Plant Rooms 01, Plant Room 052-05-01-001

Position Location : Perimeter of Room

Inspection Date	12/9/2016		
Component:	Bitumen Felt	Sample No.	FU000459
Survey Type	Management	Surveyor	Richard Farmer
Asbestos type	Chrysotile		
Quantity of Material	50lm		

Material Assessment

Material	1	Extent of Damage	1
Surface Treatment	0	Asbestos Type	1
Material Assessment Total:	3	D	



Comments:

This material requires no immediate attention.

Priority Assessment

Main Type of Activity	0	Extent of Material	1
Maintenance Activity	0	Location	1
Accessibility	0	Number of Occupants	1
Frequency of use	0	Average time is in use	0
Frequency of maintenance activity	0	Risk Assessment Total:	1
Total Score:	4	Sound	

Actions Arising	Due Date	Est. Cost
Label & Manage	14-11-2016	£0

Re-Inspection Schedule:	Status	Due Date
	 Due after six Months	12-9-2017

Main Block - Penn 05

Sample Record Number: VC FU000460 P-02

Lofts & Plant Rooms 01, Lift Motor Room 052-05-01-002

Position Location :High Level Windows

Inspection Date	12/9/2016		
Component:	Textile Seals	Sample No.	VC FU000460 P-02
Survey Type	Management	Surveyor	Richard Farmer
Asbestos type	Chrysotile		
Quantity of Material	20lm		

Material Assessment

Material	2	Extent of Damage	0
Surface Treatment	1	Asbestos Type	1
Material Assessment Total:	4	C	



Comments:

This material requires no immediate attention. Incorporate ACM into management plan until removal.

Priority Assessment

Main Type of Activity	0	Extent of Material	0
Maintenance Activity	0	Location	1
Accessibility	0	Number of Occupants	1
Frequency of use	0	Average time is in use	0
Frequency of maintenance activity	0	Risk Assessment Total:	0
Total Score:	4	Sound	

Actions Arising	Due Date	Est. Cost
Label & Manage	14-11-2016	£0

Re-Inspection Schedule:	Status	Due Date
	 Due after six Months	12-9-2017

Main Block - Penn 05

Sample Record Number: VCFU000457

Lofts & Plant Rooms 01, Lift Motor Room 052-05-01-002

Position Location : Steel Girder/Adj Plant Room

Inspection Date	12/9/2016		
Component:	AIB Panel	Sample No.	VCFU000457
Survey Type	Management	Surveyor	Richard Farmer
Asbestos type	Amosite		
Quantity of Material	2m²		

Material Assessment

Material	2	Extent of Damage	1
Surface Treatment	2	Asbestos Type	2
Material Assessment Total:	7	B	



Comments:

Encapsulate item as soon as is practicable.

Priority Assessment

Main Type of Activity	0	Extent of Material	1
Maintenance Activity	0	Location	1
Accessibility	1	Number of Occupants	1
Frequency of use	0	Average time is in use	0
Frequency of maintenance activity	0	Risk Assessment Total:	1
Total Score:	8	Slight Risk	

Actions Arising	Due Date	Est. Cost
Encapsulate, Label & Manage	14-11-2016	£0

Re-Inspection Schedule:	Status	Due Date
	 Due after six Months	12-9-2017

Main Block - Penn 05

Sample Record Number: VC FU000457

Lofts & Plant Rooms 01, Lift Motor Room 052-05-01-002

Position Location :Shuttering Adj Plant Room

Inspection Date	12/9/2016		
Component:	AIB Shuttering	Sample No.	VC FU000457
Survey Type	Management	Surveyor	Richard Farmer
Asbestos type	Amosite		
Quantity of Material	5lm		

Material Assessment

Material	2	Extent of Damage	1
Surface Treatment	2	Asbestos Type	2
Material Assessment Total:	7	B	



Comments:
Encapsulate item as soon as is practicable.

Priority Assessment

Main Type of Activity	0	Extent of Material	1
Maintenance Activity	0	Location	1
Accessibility	0	Number of Occupants	1
Frequency of use	0	Average time is in use	0
Frequency of maintenance activity	0	Risk Assessment Total:	1
Total Score:	8	Slight Risk	

Actions Arising	Due Date	Est. Cost
Encapsulate, Label & Manage	14-11-2016	£0

Re-Inspection Schedule:	Status	Due Date
	 Due after six Months	12-9-2017

Main Block - Penn 05

Sample Record Number: FU000463

Lofts & Plant Rooms 01, Lift Motor Room 052-05-01-002

Position Location : Lift Motor Room

Inspection Date	12/9/2016		
Component:	Brake Pad Lift Motor A	Sample No.	FU000463
Survey Type	Management	Surveyor	Richard Farmer
Asbestos type	Chrysotile		
Quantity of Material	2Nº		

Material Assessment

Material	1	Extent of Damage	0
Surface Treatment	0	Asbestos Type	1
Material Assessment Total:	2	D	



Comments:

Incorporate ACM into management plan until removal.

Priority Assessment

Main Type of Activity	0	Extent of Material	0
Maintenance Activity	0	Location	1
Accessibility	3	Number of Occupants	1
Frequency of use	3	Average time is in use	3
Frequency of maintenance activity	0	Risk Assessment Total:	3
Total Score:	5	Sound	

Actions Arising	Due Date	Est. Cost
Label & Manage	14-11-2016	£0

Re-Inspection Schedule:	Status	Due Date
	 Due after six Months	12-9-2017

Main Block - Penn 05

Sample Record Number: FU000460

Lofts & Plant Rooms 01, Circulation – Stairs 052-05-01-003

Position Location :High Level Windows

Inspection Date	12/9/2016		
Component:	Textile Seals to Windows	Sample No.	FU000460
Survey Type	Management	Surveyor	Richard Farmer
Asbestos type	Chrysotile		
Quantity of Material	250lm		

Material Assessment

Material	2	Extent of Damage	0
Surface Treatment	1	Asbestos Type	1
Material Assessment Total:	4	C	



Comments:

Incorporate ACM into management until removal.

Priority Assessment

Main Type of Activity	0	Extent of Material	0
Maintenance Activity	0	Location	1
Accessibility	0	Number of Occupants	1
Frequency of use	0	Average time is in use	0
Frequency of maintenance activity	0	Risk Assessment Total:	0
Total Score:	4	Sound	

Actions Arising	Due Date	Est. Cost
Label & Manage	14-11-2016	£0

Re-Inspection Schedule:	Status	Due Date
	 Due after six Months	12-9-2017

Bulk Analysis Report

Client: Organisation O2

Address: 001 - Penn Hospital TAJ52

Date: 09/12/2016

Survey Report Number J099842

Sample Ref. No.	Sample Location	Sample Description	Asbestos Types
J070863PS350	Circulation – Stairs 052-05-00-581	Inaccessible	Asbestos
FU000448	Lobby 052-01-00-022	Grey Stair Nosing	Chrysotile
J070863PS121	Circulation Corridor 052-01-01-014	Roof Tiles	Chrysotile
FU000452	Kitchen 052-06-00-011	Rope Seals	Chrysotile
J054907PS137	Plant Room 052-06-00-001	Gaskets	Chrysotile
VCFU000445-G69	Plant Room 052-05-00-570	Profile Cement Shuttering	Chrysotile
FD005297	Circulation Corridor 052-05-00-353	Cement Sheet Shuttering	Chrysotile
VCFD0005297 A	Assessment Room 052-05-00-333	Cement Sheet Shuttering	Chrysotile
VCFD0005297 B	W.C. Ensuite 052-05-00-334	Cement Sheet Shuttering	Chrysotile
VCFD005297C	W.C. Assisted 052-05-00-335	Cement Sheet Shuttering	Chrysotile
VCFU000445-G36	Office 052-05-00-336	Cement Profile	Chrysotile
FU000446	Store Cleaners 052-05-00-337	Insulating Board Shuttering	Amosite
FU000447	Store Cleaners 052-05-00-337	Flat cement sheet	Chrysotile
VCFU000445-G37	Store Cleaners 052-05-00-337	Profile Cement Sheet	Chrysotile

Sample analysis was conducted in accordance with in house procedures and the methodology contained in MDSHS77 (Asbestos in bulk materials. Sampling and identification by polarised light microscopy. June 1994). The information provided concerning sample locations is as provided by the client no liability can be accepted for the accuracy of this information Comments, Opinions, Recommendations are outside the scope of our UKAS accreditation. Determination of concentration is outside the scope of laboratory accreditation

Key = Chrysotile: White Asbestos Amosite: Brown Asbestos Crocidolite: Blue Asbestos NAD: No Asbestos Detected

Bulk Analysis Report

Client: Organisation O2

Address: 001 - Penn Hospital TAJ52

Date: 09/12/2016

Survey Report Number J099842

Sample Ref. No.	Sample Location	Sample Description	Asbestos Types
VCFU000445-1-G37	Store Cleaners 052-05-00-337	Profile Cement Sheet Debris	Chrysotile
J070863-GL1 PS156	Circulation Lift 052-05-00-355	Inaccessible	Crocidolite
VCFU000447-G40	Cupboard Electrical 052-05-00-339	Cement Sheet Panel	Chrysotile
VCFU000445	Store 052-05-00-340	Cement Profile Sheets	Chrysotile
VCFU000445-GC4	Kitchen 052-05-00-341	Profile Cement Sheet	Chrysotile
FU000445	Circulation Corridor 052-05-00-351	Cement Profile Sheets	Chrysotile
VCFU000459*R-01	Circulation Corridor 052-05-00-347	Bitumen Roof Felt	Chrysotile
VCFU000445-GC1	Circulation Corridor 052-05-00-045	Cement Profile Sheet	Chrysotile
VCFU000445-G28	Store Cleaners 052-05-00-044	Cement Profile Roof Sheet	Chrysotile
J070863-PS204	Interview Room 052-05-00-001	Presumed Asbestos	Crocidolite
VCFU000445-G-04	W.C. 052-05-00-004	Profile Cement Roof Sheets	Chrysotile
VCFU000445G-C10	Kitchen 052-05-00-338	Profile Cement Sheet	Chrysotile
VC FU000459	Plant Room 052-05-01-004	Bitumen Roof Felt	Chrysotile
J054907-PS187	Plant Room 052-05-01-001	Gaskets	Asbestos
FU000457	Plant Room 052-05-01-001	Insulating Board Panel	Amosite

Sample analysis was conducted in accordance with in house procedures and the methodology contained in MDSHS77 (Asbestos in bulk materials. Sampling and identification by polarised light microscopy. June 1994). The information provided concerning sample locations is as provided by the client no liability can be accepted for the accuracy of this information Comments, Opinions, Recommendations are outside the scope of our UKAS accreditation. Determination of concentration is outside the scope of laboratory accreditation

Key = Chrysotile: White Asbestos Amosite: Brown Asbestos Crocidolite: Blue Asbestos NAD: No Asbestos Detected

Bulk Analysis Report

Client: Organisation O2

Address: 001 - Penn Hospital TAJ52

Date: 09/12/2016

Survey Report Number J099842

Sample Ref. No.	Sample Location	Sample Description	Asbestos Types
VC FU000457P01	Plant Room 052-05-01-001	Cladding	Amosite
FU000458	Plant Room 052-05-01-001	Textile Rope Seal	Chrysotile
FU000459	Plant Room 052-05-01-001	Bitumen Felt	Chrysotile
VC FU000460 P-02	Lift Motor Room 052-05-01-002	Textile Seals	Chrysotile
VCFU000457	Lift Motor Room 052-05-01-002	AIB Panel	Amosite
VC FU000457	Lift Motor Room 052-05-01-002	AIB Shuttering	Amosite
FU000463	Lift Motor Room 052-05-01-002	Brake Pad Lift Motor A	Chrysotile
FU000460	Circulation – Stairs 052-05-01-003	Textile Seals to Windows	Chrysotile

Sample analysis was conducted in accordance with in house procedures and the methodology contained in MDSHS77 (Asbestos in bulk materials. Sampling and identification by polarised light microscopy. June 1994). The information provided concerning sample locations is as provided by the client no liability can be accepted for the accuracy of this information Comments, Opinions, Recommendations are outside the scope of our UKAS accreditation. Determination of concentration is outside the scope of laboratory accreditation

Key = Chrysotile: White Asbestos Amosite: Brown Asbestos Crocidolite: Blue Asbestos NAD: No Asbestos Detected

**Areas With No Suspect Materials
Within the Definition of this type of Survey**

001 - Penn Hospital	TAJ52
Beeches Training and Education Centre	01
Basement	(-01)
Ground Floor	00
First Floor	01
Second Floor	02
Generator House - Penn	02
Ground Floor	00
Jasmine	03
Ground Floor	00
Lofts	01
Juniper	04
Ground Floor	00
Lofts	01
Main Block - Penn	05
Basement Level	05-(-00)
Lower Ground	05-500
Ground Floor	05-400
Lofts & Plant Rooms	01
Kitchen Stores - Penn	06
Ground Floor	00

Asbestos Re-Inspection Schedule

Date: 9/12/2016

Survey Report Number J099842
In Chronological Order

Due after six Months

Sample Location	Description	Comments	Due Date	Status
e Main Block - Penn, Lower Ground, Circulation - Stairs, 052-05-00-581	Inaccessible		12/9/2017	Due after six Months
e Beeches Training and Education Centre, Ground Floor, Lobby, 052-01-00-022	Grey Stair Nosing		12/9/2017	Due after six Months
e Beeches Training and Education Centre, First Floor, Circulation Corridor, 052-01-01-014	Roof Tiles		12/9/2017	Due after six Months
e Kitchen Stores - Penn, Ground Floor, Kitchen, 052-06-00-011	Rope Seals		12/9/2017	Due after six Months
e Kitchen Stores - Penn, Ground Floor, Plant Room, 052-06-00-001	Gaskets		12/9/2017	Due after six Months
e Main Block - Penn, Lower Ground, Plant Room, 052-05-00-570	Profile Cement Shuttering		12/9/2017	Due after six Months
e Main Block - Penn, Ground Floor, Circulation Corridor, 052-05-00-353	Cement Sheet Shuttering		12/9/2017	Due after six Months
e Main Block - Penn, Ground Floor, Assessment Room, 052-05-00-333	Cement Sheet Shuttering		12/9/2017	Due after six Months
e Main Block - Penn, Ground Floor, W.C. Ensuite, 052-05-00-334	Cement Sheet Shuttering		12/9/2017	Due after six Months
e Main Block - Penn, Ground Floor, W.C. Assisted, 052-05-00-335	Cement Sheet Shuttering		12/9/2017	Due after six Months
e Main Block - Penn, Ground	Cement Profile		12/9/2017	Due after six Months

	Floor,Office,052-05-00-336				
e	Main Block - Penn,Ground Floor,Store Cleaners,052-05-00-337	Insulating Board Shuttering		12/9/2017	Due after six Months
e	Main Block - Penn,Ground Floor,Store Cleaners,052-05-00-337	Flat cement sheet		12/9/2017	Due after six Months

Due after six Months

Sample Location	Description	Comments	Due Date	Status
e Main Block - Penn,Ground Floor,Store Cleaners,052-05-00-337	Profile Cement Sheet		12/9/2017	Due after six Months
e Main Block - Penn,Ground Floor,Store Cleaners,052-05-00-337	Profile Cement Sheet Debris		12/9/2017	Due after six Months
e Main Block - Penn,Ground Floor,Circulation Lift,052-05-00-355	Inaccessible		12/9/2017	Due after six Months
e Main Block - Penn,Ground Floor,Cupboard Electrical,052-05-00-339	Cement Sheet Panel		12/9/2017	Due after six Months
e Main Block - Penn,Ground Floor,Store,052-05-00-340	Cement Profile Sheets		12/9/2017	Due after six Months
e Main Block - Penn,Ground Floor,Kitchen,052-05-00-341	Profile Cement Sheet		12/9/2017	Due after six Months
e Main Block - Penn,Ground Floor,Circulation Corridor,052-05-00-351	Cement Profile Sheets		12/9/2017	Due after six Months
e Main Block - Penn,Ground Floor,Circulation Corridor,052-05-00-347	Bitumen Roof Felt		12/9/2017	Due after six Months
e Main Block - Penn,Ground Floor,Circulation Corridor,052-05-00-045	Cement Profile Sheet		12/9/2017	Due after six Months
e Main Block - Penn,Ground Floor,Store Cleaners,052-05-00-044	Cement Profile Roof Sheet		12/9/2017	Due after six Months
e Main Block - Penn,Ground Floor,Interview Room,052-05-00-001	Presumed Asbestos		12/9/2017	Due after six Months
e Main Block - Penn,Ground Floor,W.C.,052-05-	Profile Cement Roof Sheets		12/9/2017	Due after six Months

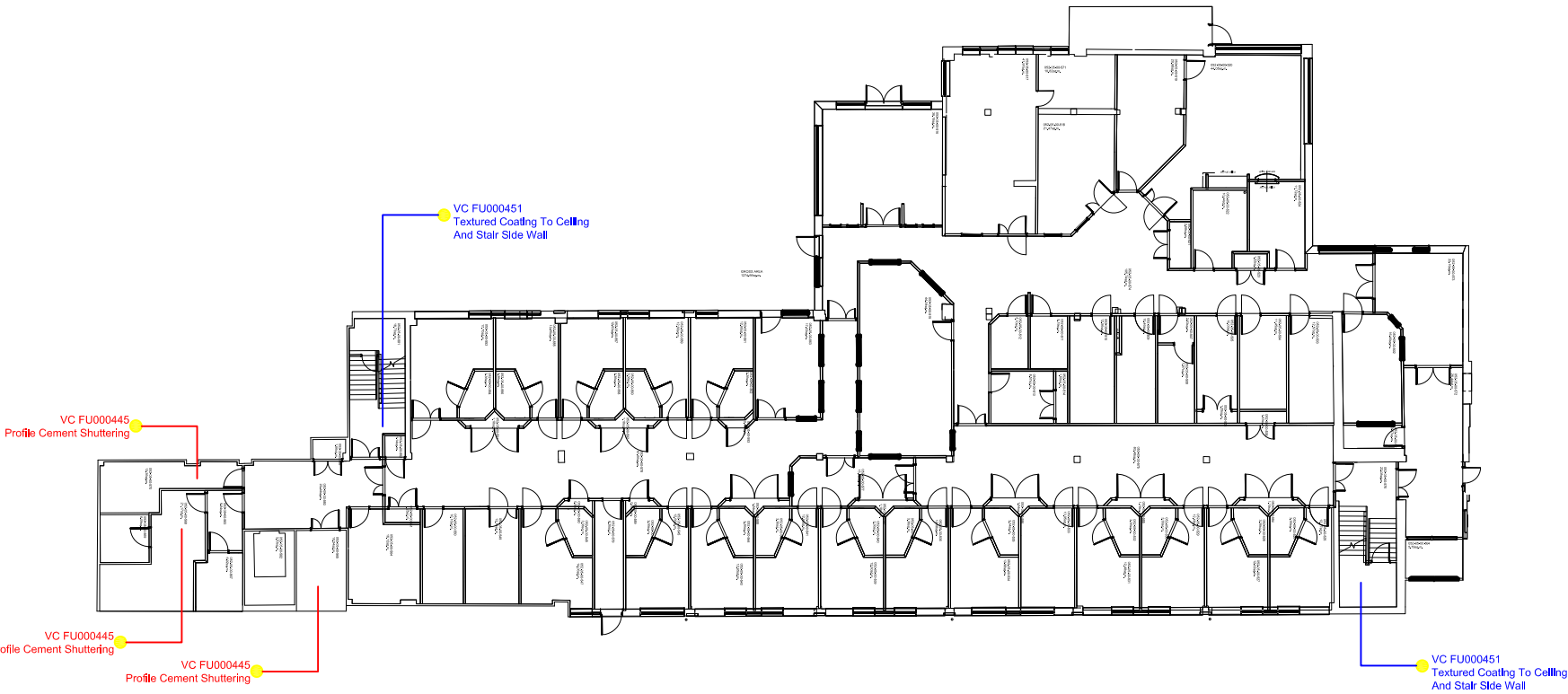
	00-004				
e	Main Block - Penn,Ground Floor,Kitchen,052- 05-00-338	Profile Cement Sheet		12/9/2017	Due after six Months
e	Main Block - Penn,Lofts & Plant Rooms,Plant Room,052-05-01- 004	Bitumen Roof Felt		12/9/2017	Due after six Months

Due after six Months

Sample Location	Description	Comments	Due Date	Status
e Main Block - Penn,Lofts & Plant Rooms,Plant Room,052-05-01-001	Gaskets		12/9/2017	Due after six Months
e Main Block - Penn,Lofts & Plant Rooms,Plant Room,052-05-01-001	Insulating Board Panel		12/9/2017	Due after six Months
e Main Block - Penn,Lofts & Plant Rooms,Plant Room,052-05-01-001	Cladding		12/9/2017	Due after six Months
e Main Block - Penn,Lofts & Plant Rooms,Plant Room,052-05-01-001	Textile Rope Seal		12/9/2017	Due after six Months
e Main Block - Penn,Lofts & Plant Rooms,Plant Room,052-05-01-001	Bitumen Felt		12/9/2017	Due after six Months
e Main Block - Penn,Lofts & Plant Rooms,Lift Motor Room,052-05-01-002	Textile Seals		12/9/2017	Due after six Months
e Main Block - Penn,Lofts & Plant Rooms,Lift Motor Room,052-05-01-002	AIB Panel		12/9/2017	Due after six Months
e Main Block - Penn,Lofts & Plant Rooms,Lift Motor Room,052-05-01-002	AIB Shuttering		12/9/2017	Due after six Months
e Main Block - Penn,Lofts & Plant Rooms,Lift Motor Room,052-05-01-002	Brake Pad Lift Motor A		12/9/2017	Due after six Months
e Main Block - Penn,Lofts & Plant Rooms,Circulation – Stairs,052-05-01-003	Textile Seals to Windows		12/9/2017	Due after six Months

No Historical Events Pending

DO NOT SCALE: CONTRACTOR MUST CHECK ALL DIMENSIONS ON SITE BEFORE PREPARING TENDER DOCUMENTS OR COMMENCING ANY WORKS.



Type of Survey

This is a Management Survey (Standard Sampling, Identification and Assessment Survey).

See Report for Details

For major refurbishments / Pre demolition a Refurbishment/ Demolition survey must be undertaken.

DRAWING KEY

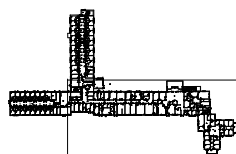
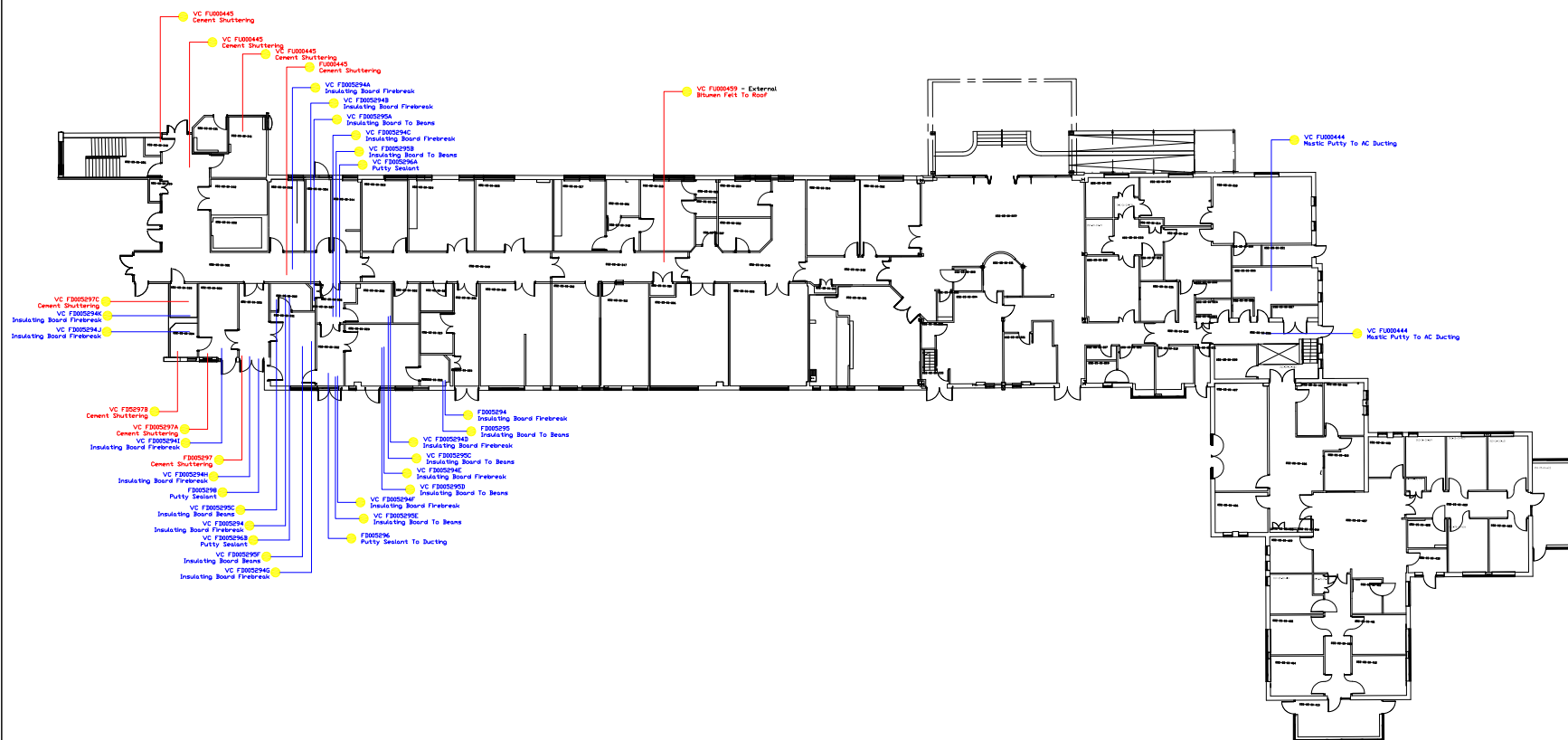
ASBESTOS PRESENT	Red
PRESUMED TO CONTAIN ASBESTOS	Red
NO ASBESTOS DETECTED	Blue
OUTSIDE SCOPE OF SURVEY	Diagonal lines
NOT ACCESSED AREAS	Green

Rev	Date	Report by	DWN	CHK



Black Country Partnership NHS Foundation Trust Headquarters, Dale House Greets Green Road West Bromwich, West Midlands B70 9PL		Black Country Partnership NHS Foundation Trust	
Penn Meadow Ward Lower Ground Floor General Layout		Sheet A1	
Drawn: AJK	Date: 25/11/2014	Scale: 1:100	Ward: Penn Meadow Ward, June 2016

DO NOT SCALE: CONTRACTOR MUST CHECK ALL DIMENSIONS ON SITE BEFORE PREPARING TENDER DOCUMENTS OR COMMENCING ANY WORKS.



Type of Survey

This Is a Management Survey (Standard Sampling, Identification and Assessment Survey).

For major refurbishments /
Pre demolition a
Refurbishment/ Demolition
survey must be undertaken.

See Report for Details

DRAWING KEY

ASBESTOS PRESENT

PRESUMED TO CONTAIN ASBESTOS

NO ASBESTOS DETECTED

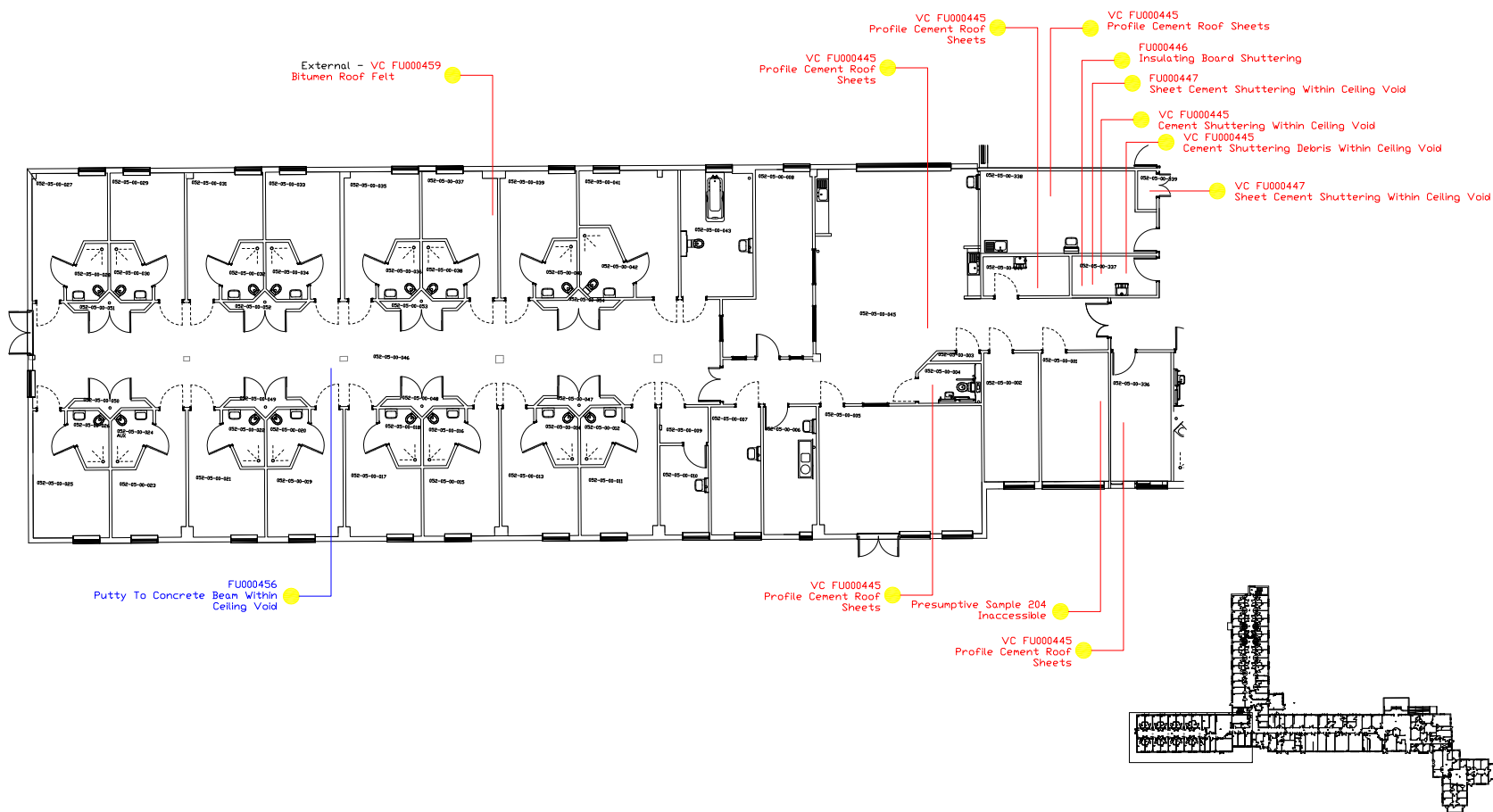
OUTSIDE SCOPE OF SURVEY

NOT ACCESSED AREAS

Rev	Date	Report by	DWN	CHK

[illegible]






DO NOT SCALE: CONTRACTOR MUST CHECK ALL DIMENSIONS ON SITE BEFORE PREPARING TENDER DOCUMENTS OR COMMENCING ANY WORKS.



This Is a Management Survey (Standard Sampling, Identification and Assessment Survey).

For major refurbishments /
Pre demolition a
Refurbishment/ Demolition
survey must be undertaken.

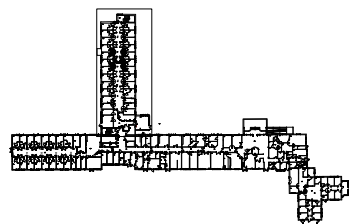
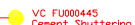
DRAWING KEY

ASBESTOS PRESENT	
PRESUMED TO CONTAIN ASBESTOS	
NO ASBESTOS DETECTED	
OUTSIDE SCOPE OF SURVEY	
NOT ACCESSED AREAS	

Rev	Date	Report by	DWN	CHK

[illegible]

DO NOT SCALE: CONTRACTOR MUST CHECK ALL DIMENSIONS ON SITE BEFORE PREPARING TENDER DOCUMENTS OR COMMENCING ANY WORKS.



Type of Survey

This Is a Management
Survey (Standard
Sampling, Identification
and Assessment Survey).

For major refurbishments /
Pre demolition a
Refurbishment/ Demolition
survey must be undertaken.

See Report for Details

DRAWING KEY

ASBESTOS PRESENT

PRESUMED TO CONTAIN ASBESTOS

NO ASBESTOS DETECTED

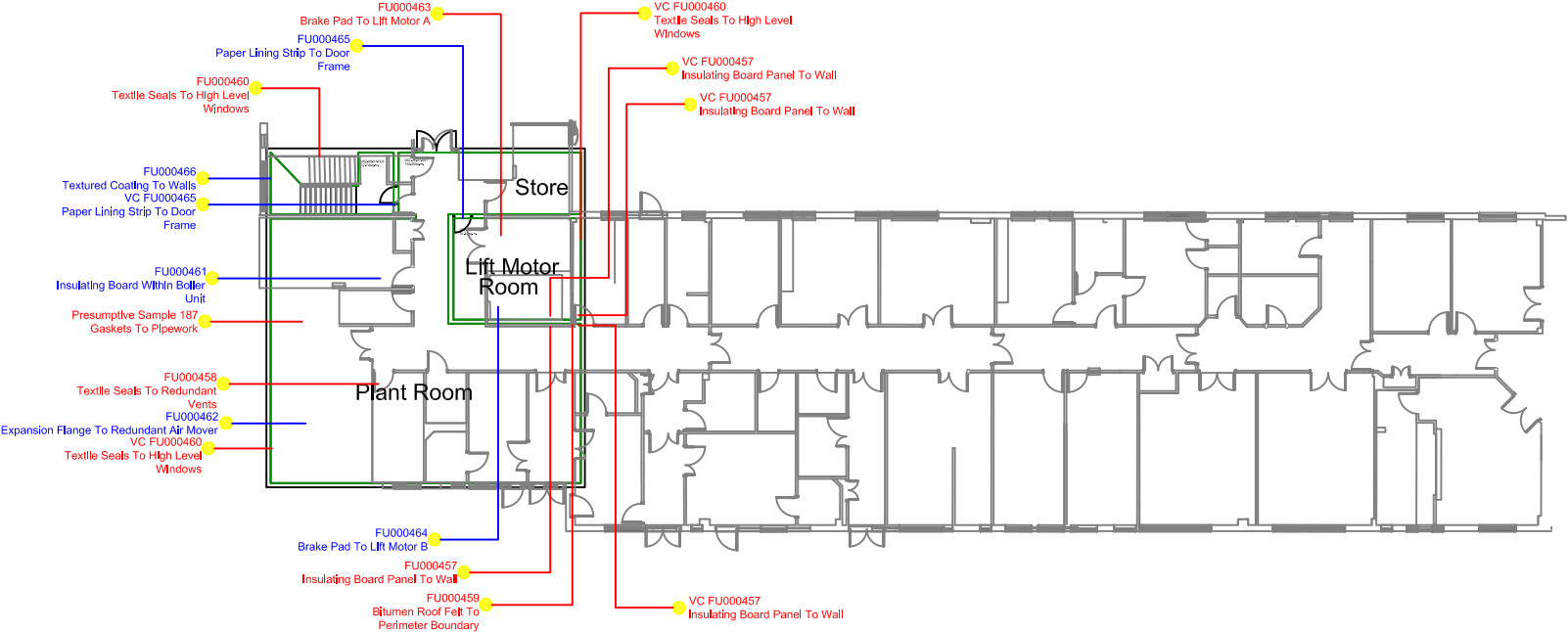
OUTSIDE SCOPE OF SURVEY

NOT ACCESSED AREAS

Rev	Date	Report by	DWN	CHK

[illegible]

DO NOT SCALE: CONTRACTOR MUST CHECK ALL DIMENSIONS ON SITE BEFORE PREPARING TENDER DOCUMENTS OR COMMENCING ANY WORKS.



Type of Survey

This is a Management Survey (Standard Sampling, Identification and Assessment Survey).

For major refurbishments / Pre demolition a Refurbishment/ Demolition survey must be undertaken.

See Report for Details

DRAWING KEY

ASBESTOS PRESENT	
PRESUMED TO CONTAIN ASBESTOS	
NO ASBESTOS DETECTED	
OUTSIDE SCOPE OF SURVEY	
NOT ACCESSED AREAS	

Rev	Date	Report by	DWN	CHK



Rev	Description	Date	Name

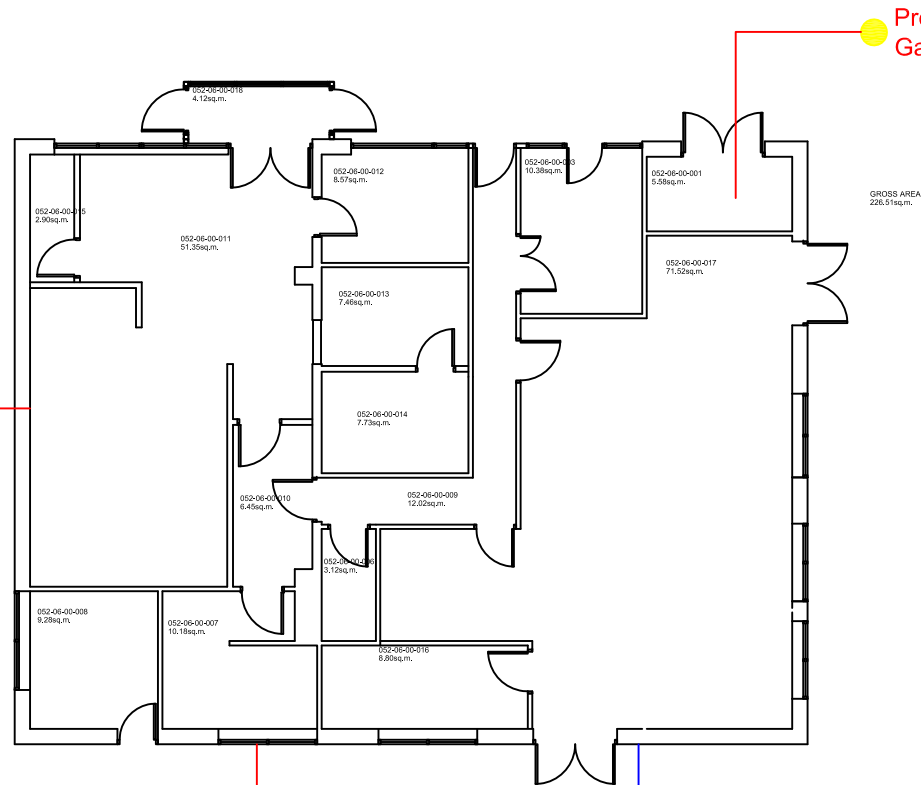
Black Country Partnership NHS Foundation Trust
Headquarters,
Delta House
Greets Green Road
West Bromwich, West Midlands
B70 9PL

Black Country Partnership NHS Foundation Trust

Title	Brook Ward, Plant Room - Penn Hospital Emergency Layout	Sheet A1
Drawn	LP	Rev A

Date:	15/02/2016	Scale:	1:100	DWG No:	052-05-01
-------	------------	--------	-------	---------	-----------

FU000452
Rope Seals To High Level
Windows



FU000453
Cement Fascia Panels

FU000454
Damp Proof Course

Presumptive Sample 137

Gaskets To Pipework

This is a Management Survey (Standard Sampling, Identification and Assessment Survey).


For major refurbishments /
Pre demolition a
Refurbishment/ Demolition
survey must be undertaken.

DRAWING KEY



Rev	Date	Report by	DWN	CHK



A	052-06-00							25/11/14	AUK
Rev	Description							Date	Name
Black Country Partnership NHS Foundation Trust Headquarters, Della House Greets Green Road West Bromwich, West Midlands B70 9PL									
Black Country Partnership									
								NHS Foundation Trust	
Title:									
Main Stores and Kitchen - Penn Hospital General Layout									
Sheet A1									
Rev A									
Drawn:	LP	Date:	13/05/2016	Scale:	1:50	DWG No:	052-06-00	June 2016	

DO NOT SCALE: CONTRACTOR MUST CHECK ALL DIMENSIONS ON SITE BEFORE PREPARING TENDER DOCUMENTS OR COMMENCING ANY WORKS.

052-02-00-001
17.44sq.m.

GROSS AREA
17.44sq.m.

052-02-00-001
17.44sq.m.

GROSS AREA
17.44sq.m.

This is a Management Survey (Standard Sampling, Identification and Assessment Survey).

Type of Survey

This is a Management Survey (Standard Sampling, Identification and Assessment Survey).

See Report for Details

For major refurbishments / Pre demolition a Refurbishment/ Demolition survey must be undertaken.

PRESUMED TO CONT

NO ASBESTOS DETECTED

OUTSIDE SCOPE OF SURV

NOT ACCESSED AREAS

--	--	--

Rev	Date	Report by	DWN	CHK

[illegible]

The diagram shows a building layout with two basements and a central staircase. Two yellow circles represent 'FU000450 Insulating Board' and 'VC FU000450 Insulating Board'. Blue lines connect these circles to the staircase area.

Rev	Date	Report by	DWN	CHK

[illegible]

DO NOT SCALE: CONTRACTOR MUST CHECK ALL DIMENSIONS ON SITE BEFORE PREPARING TENDER DOCUMENTS OR COMMENCING ANY WORKS.

VC FU000451
Textured Coating

FU000451
Textured Coating

VC FU000451
Textured Coating

VC FU000451
Textured Coating

Corridor to Meadow

FU000449
Insulating Board

VC FU000450
Insulating Board

FU000448
Stair Nosing

052-01-03-013 11.64sq.m.

052-01-03-005 10.77sq.m.

052-01-03-017 7.22sq.m.

052-01-03-002 4.35sq.m.

052-01-03-001 1.33sq.m.

052-01-03-011 2.07sq.m.

052-01-03-015 9.36sq.m.

052-01-03-018 44.08sq.m.

GR020 AREA 381.81sq.m.

052-01-03-012 6.74sq.m.

052-01-03-011 9.97sq.m.

052-01-03-023 14.55sq.m.

052-01-03-020 2.83sq.m.

052-01-03-018 23.88sq.m.

052-01-03-022 6.40sq.m.

052-01-03-008 21.51sq.m.

052-01-03-007 45.72sq.m.

052-01-03-008 37.36sq.m.

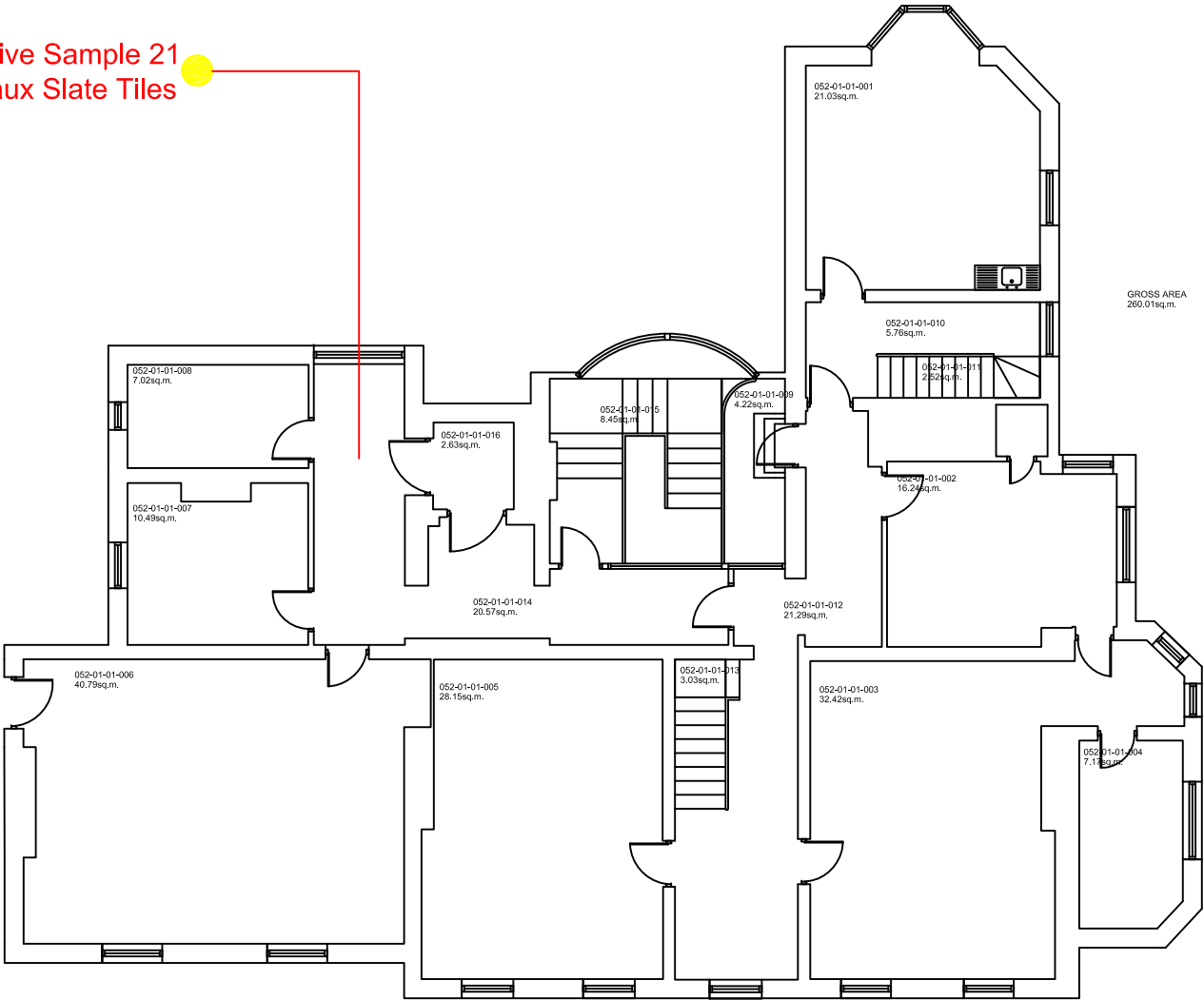
052-01-03-009 6.71sq.m.

Rev	Date	Report by	DWN	CHK
-----	------	-----------	-----	-----

[illegible]

DO NOT SCALE: CONTRACTOR MUST CHECK ALL DIMENSIONS ON SITE BEFORE PREPARING TENDER DOCUMENTS OR COMMENCING ANY WORKS.

External - Presumptive Sample 21
Faux Slate Tiles



Type of Survey
This is a Management Survey (Standard Sampling, Identification and Assessment Survey).
For major refurbishments / Pre demolition a Refurbishment/ Demolition survey must be undertaken.

See Report for Details

DRAWING KEY

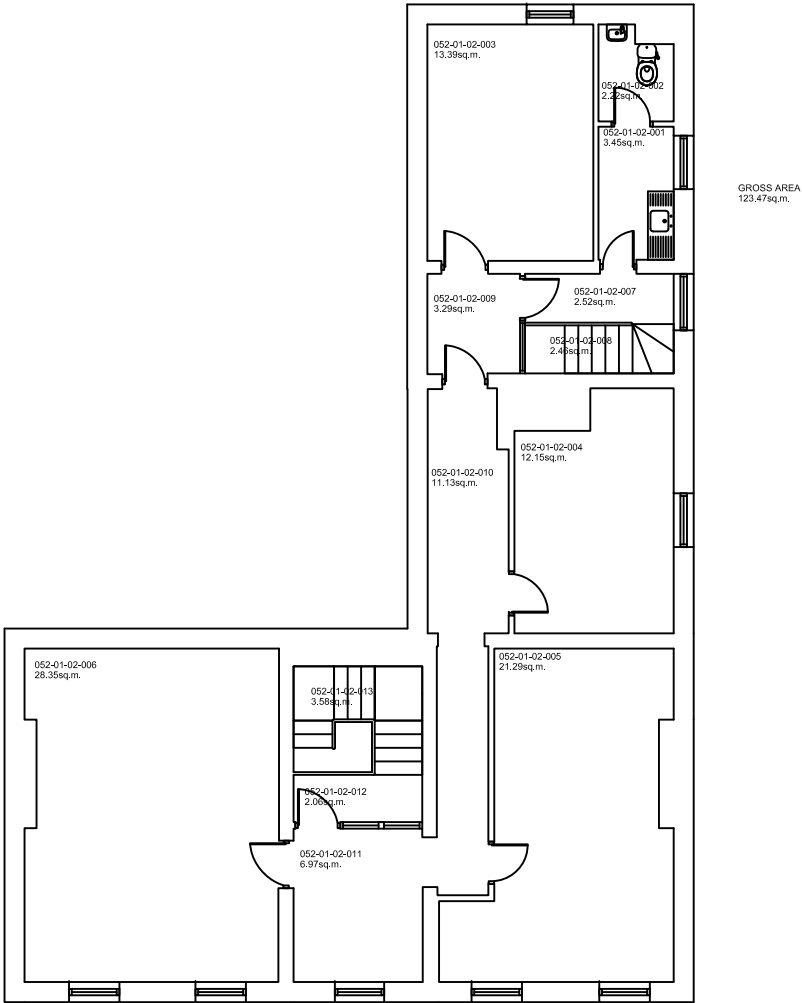
ASBESTOS PRESENT	
PRESUMED TO CONTAIN ASBESTOS	
NO ASBESTOS DETECTED	
OUTSIDE SCOPE OF SURVEY	
NOT ACCESSED AREAS	

Rev	Date	Report by	DWN	CHK



Black Country Partnership NHS Foundation Trust Headquarters, Delta House Greets Green Road West Bromwich, West Midlands B70 9PL		Black Country Partnership NHS Foundation Trust	
The Beeches - First Floor General Layout		Sheet A1 Rev A	
Drawn: AJK	Date: 25/11/2014	Scale: 1:50	DWG No: 052-01-01

DO NOT SCALE: CONTRACTOR MUST CHECK ALL DIMENSIONS ON SITE BEFORE PREPARING TENDER DOCUMENTS OR COMMENCING ANY WORKS.



Type of Survey

This is a Management Survey (Standard Sampling, Identification and Assessment Survey).
See Report for Details

For major refurbishments / Pre demolition a Refurbishment/ Demolition survey must be undertaken.

DRAWING KEY

ASBESTOS PRESENT
PRESUMED TO CONTAIN ASBESTOS
NO ASBESTOS DETECTED
OUTSIDE SCOPE OF SURVEY
NOT ACCESSED AREAS

Rev

Date

Report by

DWN

CHK



Black Country Partnership NHS Foundation Trust Headquarters, Delta House Greets Green Road West Bromwich, West Midlands B70 9PL		Black Country Partnership NHS Foundation Trust	
The Beeches - Second Floor General Layout		Sheet A1 Rev A	
Drawn: AJK	Date: 25/11/2014	Scale: 1:50	DWG No: 052-01-02