

Asbestos Material & Priority Assessment Report

at

Edward Street Community Team Base TAJ05



ASBESTOS

Survey Conducted by: Riverside Environmental Services Ltd

Date: 8/12/2016

Survey Report Number J099846

Sandwell New Code

Edward Street Community Team Base TAJ05

Sample Record Number: FU000385

Building External Element

Position Location : Above Windows

Inspection Date	14/9/2016		
Component:	Infill Panels	Sample No.	FU000385
Survey Type	Type 2	Surveyor	Richard Farmer
Asbestos type	Chrysotile		
Quantity of Material	25m²		

Material Assessment

Material	1	Extent of Damage	1
Surface Treatment	1	Asbestos Type	1
Material Assessment Total:	4	C	



Comments:

Incorporate asbestos containing materials within management plan until removal.

Priority Assessment

Main Type of Activity	0	Extent of Material	2
Maintenance Activity	0	Location	0
Accessibility	0	Number of Occupants	0
Frequency of use	0	Average time is in use	0
Frequency of maintenance activity	0	Risk Assessment Total:	1
Total Score:	5	Sound	

Actions Arising	Due Date	Est. Cost
Label & Manage	11-11-2016	£0

Re-Inspection Schedule:	Status	Due Date
	 Due after six Months	14-9-2017

Edward Street Community Team Base TAJ05

Sample Record Number: FU000384

Building External Element

Position Location :Soffits & Canopies

Inspection Date	14/9/2016		
Component:	Soffit & Canopies	Sample No.	FU000384
Survey Type	Type 2	Surveyor	Richard Farmer
Asbestos type	Chrysotile		
Quantity of Material	250m²		

Material Assessment

Material	1	Extent of Damage	1
Surface Treatment	1	Asbestos Type	1
Material Assessment Total:	4	C	



Comments:

Incorporate asbestos containing materials into management plan until removal.

Priority Assessment

Main Type of Activity	0	Extent of Material	1
Maintenance Activity	0	Location	0
Accessibility	0	Number of Occupants	0
Frequency of use	0	Average time is in use	0
Frequency of maintenance activity	0	Risk Assessment Total:	0
Total Score:	4	Sound	

Actions Arising	Due Date	Est. Cost
Label & Manage	11-11-2016	£0

Re-Inspection Schedule:	Status	Due Date
	 Due after six Months	14-9-2017

Edward Street Community Team Base TAJ05

Sample Record Number: FU000387

Building External Element

Position Location : To all metal & glass skylights

Inspection Date	14/9/2016		
Component:	Glass seals	Sample No.	FU000387
Survey Type	Type 2	Surveyor	Richard Farmer
Asbestos type	Chrysotile		
Quantity of Material	400lm		

Material Assessment

Material	2	Extent of Damage	1
Surface Treatment	2	Asbestos Type	1
Material Assessment Total:	6	C	



Comments:

Incorporate asbestos containing materials within management plan until removal.

Priority Assessment

Main Type of Activity	0	Extent of Material	1
Maintenance Activity	0	Location	0
Accessibility	0	Number of Occupants	1
Frequency of use	0	Average time is in use	0
Frequency of maintenance activity	0	Risk Assessment Total:	0
Total Score:	6	Sound	

Actions Arising	Due Date	Est. Cost
Label & Manage	11-11-2016	£0

Re-Inspection Schedule:	Status	Due Date
	 Due after six Months	14-9-2017

Edward Street Community Team Base TAJ05

Sample Record Number: Presumptive Sample 87

Building External Element

Position Location : pipe within metal casing

Inspection Date	14/9/2016		
Component:	Flue pipe within metal casing	Sample No.	Presumptive Sample 87
Survey Type	Type 2	Surveyor	Richard Farmer
Asbestos type	Crocidolite		
Quantity of Material	35lm		

Material Assessment

Material	1	Extent of Damage	1
Surface Treatment	1	Asbestos Type	3
Material Assessment Total:	6	C	



Comments:

Incorporate asbestos containing materials within the management plan until removal.

Priority Assessment

Main Type of Activity	0	Extent of Material	1
Maintenance Activity	0	Location	0
Accessibility	0	Number of Occupants	0
Frequency of use	0	Average time is in use	0
Frequency of maintenance activity	0	Risk Assessment Total:	0
Total Score:	6	Sound	

Actions Arising	Due Date	Est. Cost
Label & Manage	11-11-2016	£0

Re-Inspection Schedule:	Status	Due Date
	 Due after six Months	14-9-2017

Edward Street Community Team Base TAJ05

Sample Record Number: Presumptive Sample 88

Ground Floor 00, Office 007-02-00-025

Position Location : Within all floor service ducts

Inspection Date	14/9/2016		
Component:	Insulation to pipework	Sample No.	Presumptive Sample 88
Survey Type	Type 2	Surveyor	Richard Farmer
Asbestos type	Crocidolite		
Quantity of Material	100lm		

Material Assessment

Material	3	Extent of Damage	0
Surface Treatment	1	Asbestos Type	3
Material Assessment Total:	7	B	



Comments:

Presumed based on basement assessments.
Incorporate asbestos containing materials into the management plan until removed.

Priority Assessment

Total Score:	7	Sound
---------------------	----------	--------------

Actions Arising	Due Date	Est. Cost
Label & Manage	11-11-2016	£0

Re-Inspection Schedule:	Status	Due Date
	 Due after six Months	14-9-2017

Edward Street Community Team Base TAJ05

Sample Record Number: FU000387

Ground Floor 00, Greenhouse 007-02-00-043

Position Location : To metal framework & glass

Inspection Date	14/9/2016		
Component:	Glass seals	Sample No.	FU000387
Survey Type	Type 2	Surveyor	Richard Farmer
Asbestos type	Chrysotile		
Quantity of Material	75lm		

Material Assessment

Material	2	Extent of Damage	1
Surface Treatment	2	Asbestos Type	1
Material Assessment Total:	6	C	



Comments:

Label and manage material.

Priority Assessment

Main Type of Activity	0	Extent of Material	1
Maintenance Activity	0	Location	0
Accessibility	0	Number of Occupants	1
Frequency of use	0	Average time is in use	0
Frequency of maintenance activity	0	Risk Assessment Total:	0
Total Score:	6	Sound	

Actions Arising	Due Date	Est. Cost
Label & Manage	11-11-2016	£0

Re-Inspection Schedule:	Status	Due Date
	 Due after six Months	14-9-2017

Edward Street Community Team Base TAJ05

Sample Record Number: FU000375

Basement -1, 007-02-(-1)-01 007-02-(-1)-01

Position Location : Walls

Inspection Date	14/9/2016		
Component:	Residue	Sample No.	FU000375
Survey Type	Type 2	Surveyor	Richard Farmer
Asbestos type	Chrysotile, Crocidolite		
Quantity of Material	50m²		

Material Assessment

Material	3	Extent of Damage	3
Surface Treatment	2	Asbestos Type	3
Material Assessment Total:	11		



Comments:

Incorporate asbestos containing materials into the management plan until removal.

Priority Assessment

Main Type of Activity	0	Extent of Material	2
Maintenance Activity	0	Location	2
Accessibility	1	Number of Occupants	1
Frequency of use	0	Average time is in use	0
Frequency of maintenance activity	1	Risk Assessment Total:	3
Total Score:	14	Moderate Risk	

Actions Arising	Due Date	Est. Cost
Label & Manage	11-11-2016	£0

Re-Inspection Schedule:	Status	Due Date
	 Due after six Months	14-9-2017

Edward Street Community Team Base TAJ05

Sample Record Number: FU000376

Basement -1, 007-02-(-1)-01 007-02-(-1)-01

Position Location : Walls

Inspection Date	14/9/2016		
Component:	Residue	Sample No.	FU000376
Survey Type	Type 2	Surveyor	Richard Farmer
Asbestos type	Chrysotile, Crocidolite		
Quantity of Material	50m²		

Material Assessment

Material	3	Extent of Damage	3
Surface Treatment	2	Asbestos Type	3
Material Assessment Total:	11		



Comments:

Incorporate asbestos containing materials into management plan until removal.

Priority Assessment

Main Type of Activity	0	Extent of Material	1
Maintenance Activity	0	Location	2
Accessibility	0	Number of Occupants	1
Frequency of use	0	Average time is in use	0
Frequency of maintenance activity	1	Risk Assessment Total:	2
Total Score:	13	Moderate Risk	

Actions Arising	Due Date	Est. Cost
Label & Manage	11-11-2016	£0

Re-Inspection Schedule:	Status	Due Date
	 Due after six Months	14-9-2017

Edward Street Community Team Base TAJ05

Sample Record Number: FU000378

Basement -1, 007-02-(-1)-01 007-02-(-1)-01

Position Location :All Plant & Equipment

Inspection Date	14/9/2016		
Component:	Dust & Debris	Sample No.	FU000378
Survey Type	Type 2	Surveyor	Richard Farmer
Asbestos type	Chrysotile		
Quantity of Material	50m²		

Material Assessment

Material	3	Extent of Damage	3
Surface Treatment	3	Asbestos Type	1
Material Assessment Total:	10	A	



Comments:

Basement area has undergone cleaning. Walls and floors were then encapsulated with ET150 07/12/14 During the re-inspection, no obvious asbestos dust or debris was found on plant, however inspection within joints and within equipment was not possible.

Priority Assessment

Main Type of Activity	0	Extent of Material	2
Maintenance Activity	0	Location	2
Accessibility	0	Number of Occupants	1
Frequency of use	0	Average time in use	1
Frequency of maintenance activity	1	Risk Assessment Total:	3
Total Score:	13	Moderate Risk	

Actions Arising	Due Date	Est. Cost
Label & Manage	11-11-2016	£0

Re-Inspection Schedule:	Status	Due Date
	 Due after six Months	14-9-2017

Edward Street Community Team Base TAJ05

Sample Record Number: Presumptive Sample 70

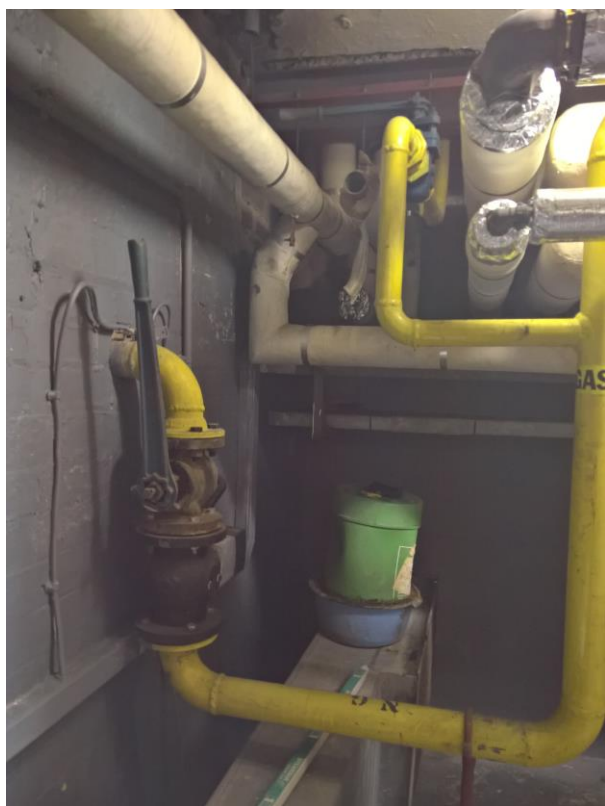
Basement -1, 007-02-(-1)-01 007-02-(-1)-01

Position Location : To all pipework

Inspection Date	14/9/2016		
Component:	Gaskets	Sample No.	Presumptive Sample 70
Survey Type	Type 2	Surveyor	Richard Farmer
Asbestos type	Chrysotile		
Quantity of Material	50N°		

Material Assessment

Material	1	Extent of Damage	1
Surface Treatment	0	Asbestos Type	1
Material Assessment Total:	3	D	



Comments:

Incorporate asbestos containing materials into the management plan until removal.

Priority Assessment

Main Type of Activity	0	Extent of Material	0
Maintenance Activity	0	Location	2
Accessibility	0	Number of Occupants	0
Frequency of use	0	Average time is in use	0
Frequency of maintenance activity	0	Risk Assessment Total:	1
Total Score:	4	Sound	

Actions Arising	Due Date	Est. Cost
Label & Manage	11-11-2016	£0

Re-Inspection Schedule:	Status	Due Date
	 Due after six Months	14-9-2017

Edward Street Community Team Base TAJ05

Sample Record Number: Presumptive Sample 75

Basement -1, 007-02-(-1)-01 007-02-(-1)-01

Position Location : To all pipework

Inspection Date	14/9/2016		
Component:	Gaskets	Sample No.	Presumptive Sample 75
Survey Type	Type 2	Surveyor	Richard Farmer
Asbestos type	Chrysotile		
Quantity of Material	50N°		

Material Assessment

Material	1	Extent of Damage	1
Surface Treatment	0	Asbestos Type	1
Material Assessment Total:	3	D	



Comments:

Incorporate asbestos containing materials into the management plan until removal.

Priority Assessment

Main Type of Activity	0	Extent of Material	0
Maintenance Activity	0	Location	2
Accessibility	0	Number of Occupants	0
Frequency of use	0	Average time is in use	0
Frequency of maintenance activity	0	Risk Assessment Total:	1
Total Score:	4	Sound	

Actions Arising	Due Date	Est. Cost
Label & Manage	11-11-2016	£0

Re-Inspection Schedule:	Status	Due Date
	 Due after six Months	14-9-2017

Edward Street Community Team Base TAJ05

Sample Record Number: FU000380

Basement -1, 007-02-(-1)-02 007-02-(-1)-02

Position Location : Walls

Inspection Date	14/9/2016		
Component:	Debris	Sample No.	FU000380
Survey Type	Type 2	Surveyor	Richard Farmer
Asbestos type	Chrysotile, Crocidolite		
Quantity of Material	50m²		

Material Assessment

Material	3	Extent of Damage	3
Surface Treatment	3	Asbestos Type	3
Material Assessment Total:	12		



Comments:

Item requires encapsulation. Incorporate asbestos containing materials into management plan until removal.

Priority Assessment

Main Type of Activity	0	Extent of Material	1
Maintenance Activity	0	Location	2
Accessibility	2	Number of Occupants	0
Frequency of use	0	Average time is in use	0
Frequency of maintenance activity	1	Risk Assessment Total:	3
Total Score:	15	Moderate Risk	

Actions Arising	Due Date	Est. Cost
Encapsulate, Label & Manage	11-11-2016	£0

Re-Inspection Schedule:	Status	Due Date
	 Due after six Months	14-9-2017

Edward Street Community Team Base TAJ05

Sample Record Number: FU000381

Basement -1, 007-02-(-1)-02 007-02-(-1)-02

Position Location : Walls

Inspection Date	14/9/2016		
Component:	Residue	Sample No.	FU000381
Survey Type	Type 2	Surveyor	Richard Farmer
Asbestos type	Chrysotile, Crocidolite		
Quantity of Material	50m²		

Material Assessment

Material	3	Extent of Damage	3
Surface Treatment	3	Asbestos Type	3
Material Assessment Total:	12		



Comments:

Item requires encapsulation. Incorporate asbestos containing materials into management plan until removal.

Priority Assessment

Main Type of Activity	0	Extent of Material	1
Maintenance Activity	0	Location	2
Accessibility	2	Number of Occupants	0
Frequency of use	0	Average time is in use	0
Frequency of maintenance activity	1	Risk Assessment Total:	3
Total Score:	15	Moderate Risk	

Actions Arising	Due Date	Est. Cost
Encapsulate, Label & Manage	11-11-2016	£0

Re-Inspection Schedule:	Status	Due Date
	 Due after six Months	14-9-2017

Edward Street Community Team Base TAJ05

Sample Record Number: FU000382

Basement -1, 007-02-(-1)-02 007-02-(-1)-02

Position Location : Floor

Inspection Date	14/9/2016		
Component:	Debris	Sample No.	FU000382
Survey Type	Type 2	Surveyor	Richard Farmer
Asbestos type	Chrysotile, Crocidolite		
Quantity of Material	50m ²		

Material Assessment

Material	3	Extent of Damage	3
Surface Treatment	3	Asbestos Type	3
Material Assessment Total:	12		



Comments:

Incorporate asbestos containing materials into management plan until removal.

Priority Assessment

Main Type of Activity	0	Extent of Material	1
Maintenance Activity	0	Location	2
Accessibility	2	Number of Occupants	0
Frequency of use	0	Average time is in use	0
Frequency of maintenance activity	1	Risk Assessment Total:	3
Total Score:	15	Moderate Risk	

Actions Arising	Due Date	Est. Cost
Remove under Controlled Conditions by Approved Contractor.	11-11-2016	£0

Re-Inspection Schedule:	Status	Due Date
	 Due after six Months	14-9-2017

Edward Street Community Team Base TAJ05

Sample Record Number: FU000383

Basement -1, 007-02-(-1)-02 007-02-(-1)-02

Position Location : Floor

Inspection Date	14/9/2016		
Component:	Debris	Sample No.	FU000383
Survey Type	Type 2	Surveyor	Richard Farmer
Asbestos type	Crocidolite		
Quantity of Material	50m²		

Material Assessment

Material	3	Extent of Damage	3
Surface Treatment	3	Asbestos Type	3
Material Assessment Total:	12		



Comments:

Incorporate asbestos containing material into management plan until removal.

Priority Assessment

Main Type of Activity	0	Extent of Material	1
Maintenance Activity	0	Location	2
Accessibility	2	Number of Occupants	0
Frequency of use	0	Average time is in use	0
Frequency of maintenance activity	1	Risk Assessment Total:	3
Total Score:	15	Moderate Risk	

Actions Arising	Due Date	Est. Cost
Remove under Controlled Conditions by Approved Contractor.	11-11-2016	£0

Re-Inspection Schedule:	Status	Due Date
	 Due after six Months	14-9-2017

Bulk Analysis Report

Client: Sandwell New Code

Address: Edward Street Community Team Base TAJ05

Date: 08/12/2016

Survey Report Number J099846

Sample Ref. No.	Sample Location	Sample Description	Asbestos Types
FU000385	Edward Street Community Team Base TAJ05	Infill Panels	Chrysotile
FU000384	Edward Street Community Team Base TAJ05	Soffit & Canopies	Chrysotile
FU000387	Edward Street Community Team Base TAJ05	Glass seals	Chrysotile
Presumptive Sample 87	Edward Street Community Team Base TAJ05	Flue pipe within metal casing	Crocidolite
Presumptive Sample 88	Office 007-02-00-025	Insulation to pipework	Crocidolite
FU000387	Greenhouse 007-02-00-043	Glass seals	Chrysotile
FU000375	007-02-(-1)-01 007-02-(-1)-01	Residue	Chrysotile Crocidolite
FU000376	007-02-(-1)-01 007-02-(-1)-01	Residue	Chrysotile Crocidolite
FU000378	007-02-(-1)-01 007-02-(-1)-01	Dust & Debris	Chrysotile
Presumptive Sample 70	007-02-(-1)-01 007-02-(-1)-01	Gaskets	Chrysotile
Presumptive Sample 75	007-02-(-1)-01 007-02-(-1)-01	Gaskets	Chrysotile
FU000380	007-02-(-1)-02 007-02-(-1)-02	Debris	Chrysotile Crocidolite
FU000381	007-02-(-1)-02 007-02-(-1)-02	Residue	Chrysotile Crocidolite
FU000382	007-02-(-1)-02 007-02-(-1)-02	Debris	Chrysotile Crocidolite

Sample analysis was conducted in accordance with in house procedures and the methodology contained in MDSHS77 (Asbestos in bulk materials. Sampling and identification by polarised light microscopy. June 1994). The information provided concerning sample locations is as provided by the client no liability can be accepted for the accuracy of this information Comments, Opinions, Recommendations are outside the scope of our UKAS accreditation. Determination of concentration is outside the scope of laboratory accreditation

Key = Chrysotile: White Asbestos Amosite: Brown Asbestos Crocidolite: Blue Asbestos NAD: No Asbestos Detected

Bulk Analysis Report

Client:Sandwell New Code

Address: Edward Street Community Team Base TAJ05

Date: 08/12/2016

Survey Report Number J099846

Sample Ref. No.	Sample Location	Sample Description	Asbestos Types
FU000383	007-02-(-1)-02 007-02-(-1)-02	Debris	Crocidolite

Sample analysis was conducted in accordance with in house procedures and the methodology contained in MDSHS77 (Asbestos in bulk materials. Sampling and identification by polarised light microscopy. June 1994). The information provided concerning sample locations is as provided by the client no liability can be accepted for the accuracy of this information Comments, Opinions, Recommendations are outside the scope of our UKAS accreditation. Determination of concentration is outside the scope of laboratory accreditaion

Key = Chrysotile: White Asbestos Amosite: Brown Asbestos Crocidolite: Blue Asbestos NAD: No Asbestos Detected

**Areas With No Suspect Materials
Within the Definition of this type of Survey**

Edward Street Community Team Base

TAJ05

Basement

-1

007-02-(-1)-01

007-02-(-1)-01

Wall Debris

007-02-(-1)-03

007-02-(-1)-03

007-02-(-1)-04

007-02-(-1)-04

007-02-(-1)-05

007-02-(-1)-05

Ground Floor

00

Kitchen – ADL

007-02-00-002

Interview Room

007-02-00-003

Group Room

007-02-00-004

Consult/Exam Room

007-02-00-005

Therapy Room

007-02-00-006

Kitchen

007-02-00-011

Office

007-02-00-012

Computer Room

007-02-00-013

Courtyard

007-02-00-014

Office

007-02-00-015

Office

007-02-00-016

Store – Cleaners

007-02-00-018

Store

007-02-00-021

Store

007-02-00-022

Office

007-02-00-023

**Edward Street Community Team Base
Ground Floor**

**TAJ05
00**

Quiet Room	007-02-00-026
Office	007-02-00-027
Office	007-02-00-028
Post Room	007-02-00-029
W.C.	007-02-00-030
Circulation – Lobby	007-02-00-031
W.C.	007-02-00-032
Reception	007-02-00-034
Server Room	007-02-00-035
Circulation – Corridor	007-02-00-037
Circulation – Corridor	007-02-00-039
Circulation – Corridor	007-02-00-040
Circulation – Corridor	007-02-00-041
Circulation – Corridor	007-02-00-042
Circulation – Stairs	007-02-00-044

First Floor

01

Office	007-02-01-001
W.C.	007-02-01-002
Meeting Room	007-02-01-003
Kitchen	007-02-01-004
Store	007-02-01-005
Store	007-02-01-006
Office	007-02-01-007
Office	007-02-01-008
Photocopy Room	007-02-01-009
Office	007-02-01-010

Edward Street Community Team Base
First Floor

TAJ05
01

Store

007-02-01-011

W.C.

007-02-01-012

Office

007-02-01-013

Circulation – Corridor

007-02-01-015

Circulation – Corridor

007-02-01-016

Void

007-02-01-017

Loft Space

02

Plant Room

007-02-02-01

Asbestos Re-Inspection Schedule

Date: 8/12/2016

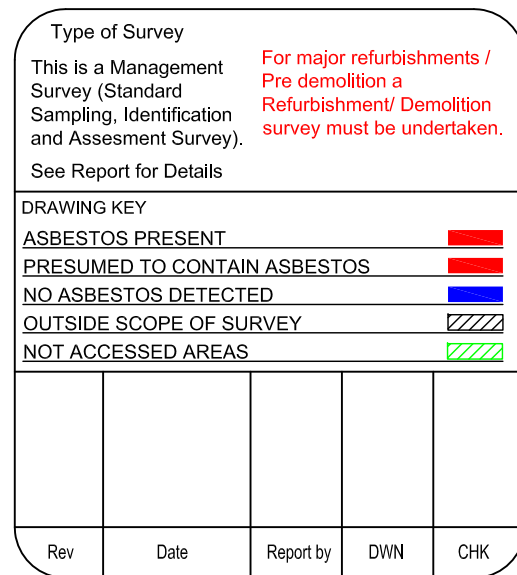
Survey Report Number J099846
In Chronological Order

Due after six Months

Sample Location	Description	Comments	Due Date	Status
e Edward Street Community Team Base	Infill Panels		14/9/2017	Due after six Months
e Edward Street Community Team Base	Soffit & Canopies		14/9/2017	Due after six Months
e Edward Street Community Team Base	Glass seals		14/9/2017	Due after six Months
e Edward Street Community Team Base	Flue pipe within metal casing		14/9/2017	Due after six Months
e Edward Street Community Team Base,Ground Floor,Office,007-02-00-025	Insulation to pipework		14/9/2017	Due after six Months
e Edward Street Community Team Base,Ground Floor,Greenhouse,007-02-00-043	Glass seals		14/9/2017	Due after six Months
e Edward Street Community Team Base,Basement,007-02-(-1)-01,007-02-(-1)-01	Residue		14/9/2017	Due after six Months
e Edward Street Community Team Base,Basement,007-02-(-1)-01,007-02-(-1)-01	Residue		14/9/2017	Due after six Months
e Edward Street Community Team Base,Basement,007-02-(-1)-01,007-02-(-1)-01	Dust & Debris		14/9/2017	Due after six Months
e Edward Street Community Team Base,Basement,007-02-(-1)-01,007-02-(-1)-01	Gaskets		14/9/2017	Due after six Months
e Edward Street Community Team Base,Basement,007-02-(-1)-01,007-02-(-1)-01	Gaskets		14/9/2017	Due after six Months
e Edward Street Community Team Base,Basement,007-02-(-1)-02,007-02-(-1)-02	Debris		14/9/2017	Due after six Months

e	Edward Street Community Team Base,Basement,007- 02-(-1)-02,007-02-(- 1)-02	Residue		14/9/2017	Due after six Months
e	Edward Street Community Team Base,Basement,007- 02-(-1)-02,007-02-(- 1)-02	Debris		14/9/2017	Due after six Months
e	Edward Street Community Team Base,Basement,007- 02-(-1)-02,007-02-(- 1)-02	Debris		14/9/2017	Due after six Months

No Historical Events Pending

[illegible]

