

# **Asbestos Material & Priority Assessment Report**

at

**004 - Delta House TAJHQ**



# **ASBESTOS**

**Survey Conducted by:** Riverside Environmental Services Ltd

**Date:** 8/12/2016

**Survey Report Number** J099843

**Organisation** O2

## Delta House TAJHQ

**Sample Record Number:** J056577 Presumptive Sample 111

**Ground Floor G, Plant Room TAJAGG-DH-G-09**

**Position Location :** Wall

Inspection Date	13/9/2016		
Component:	Wall Heater	Sample No.	J056577 Presumptive Sample 111
Survey Type	Type 2	Surveyor	Richard Farmer
Asbestos type	Crocidolite		
Quantity of Material	1m <sup>2</sup>		

### Material Assessment

Material	2	Extent of Damage	0
Surface Treatment	2	Asbestos Type	3
<b>Material Assessment Total:</b>	<b>7</b>	<b>B</b>	



### Comments:

Label and manage. This material does not require immediate attention.

### Priority Assessment

Main Type of Activity	0	Extent of Material	1
Maintenance Activity	0	Location	2
Accessibility	0	Number of Occupants	0
Frequency of use	0	Average time is in use	0
Frequency of maintenance activity	0	<b>Risk Assessment Total:</b>	<b>1</b>
<b>Total Score:</b>	<b>8</b>	<b>Slight Risk</b>	

Actions Arising	Due Date	Est. Cost

Re-Inspection Schedule:	Status	Due Date
	 Due after six Months	13-9-2017

## Delta House TAJHQ

**Sample Record Number:** J056577 Presumptive Sample 91

**Ground Floor G, Electrical Substation TAJAGG-DH-G-29**

**Position Location :** Switch Gear

Inspection Date	13/9/2016		
Component:	<b>Electrical Switch Gear</b>	Sample No.	<b>J056577 Presumptive Sample 91</b>
Survey Type	Type 2	Surveyor	Richard Farmer
Asbestos type	<b>Chrysotile</b>		
Quantity of Material	<b>0lm</b>		

### Material Assessment

Material	2	Extent of Damage	0
Surface Treatment	1	Asbestos Type	3
<b>Material Assessment Total:</b>	<b>6</b>	<b>C</b>	



### Comments:

Incorporate asbestos containing materials into management plan until removal.

### Priority Assessment

Main Type of Activity	0	Extent of Material	0
Maintenance Activity	0	Location	3
Accessibility	0	Number of Occupants	0
Frequency of use	0	Average time is in use	0
Frequency of maintenance activity	0	<b>Risk Assessment Total:</b>	<b>1</b>
<b>Total Score:</b>	<b>7</b>	<b>Sound</b>	

Actions Arising	Due Date	Est. Cost

Re-Inspection Schedule:	Status	Due Date
	 Due after six Months	13-9-2017

## **Delta House TAJHQ**

**Sample Record Number:** VCFD001470 - 104

**First Floor 1, Office TAJAGG-DH-1-04**

**Position Location :**Floor

Inspection Date	13/9/2016		
Component:	<b>Orange Floor Tiles</b>	Sample No.	<b>VCFD001470 - 104</b>
Survey Type	Type 2	Surveyor	Richard Farmer
Asbestos type	<b>Chrysotile</b>		
Quantity of Material	<b>500m<sup>2</sup></b>		

### **Material Assessment**

Material	1	Extent of Damage	0
Surface Treatment	0	Asbestos Type	1
<b>Material Assessment Total:</b>	<b>2</b>	<b>D</b>	




### **Comments:**

Incorporate asbestos containing materials into management plan until removal.

### **Priority Assessment**

Main Type of Activity	1	Extent of Material	3
Maintenance Activity	0	Location	1
Accessibility	0	Number of Occupants	3
Frequency of use	3	Average time is in use	3
Frequency of maintenance activity	0	<b>Risk Assessment Total:</b>	<b>5</b>
<b>Total Score:</b>	<b>7</b>	<b>Sound</b>	

<b>Actions Arising</b>	<b>Due Date</b>	<b>Est. Cost</b>

<b>Re-Inspection Schedule:</b>	<b>Status</b>	<b>Due Date</b>
	 Due after six Months	13-9-2017

## Delta House TAJHQ

**Sample Record Number:** VCFD001465 - 109

**First Floor 1, Circulation – Lobby TAJAGG-DH-1-09**

**Position Location :** Floor

Inspection Date	13/9/2016		
Component:	<b>Orange Floor Tiles</b>	Sample No.	<b>VCFD001465 - 109</b>
Survey Type	Type 2	Surveyor	Richard Farmer
Asbestos type	<b>Chrysotile</b>		
Quantity of Material	<b>8m<sup>2</sup></b>		

### Material Assessment

Material	1	Extent of Damage	1
Surface Treatment	0	Asbestos Type	1
<b>Material Assessment Total:</b>	<b>3</b>	<b>D</b>	



### Comments:

Incorporate asbestos containing materials into management plan until removal.

### Priority Assessment

Main Type of Activity	0	Extent of Material	1
Maintenance Activity	0	Location	2
Accessibility	2	Number of Occupants	0
Frequency of use	0	Average time is in use	0
Frequency of maintenance activity	0	<b>Risk Assessment Total:</b>	<b>2</b>
<b>Total Score:</b>	<b>5</b>	<b>Sound</b>	

Actions Arising	Due Date	Est. Cost

Re-Inspection Schedule:	Status	Due Date
	 Due after six Months	13-9-2017

## Delta House TAJHQ

**Sample Record Number:** VCFD001470 - 1S1

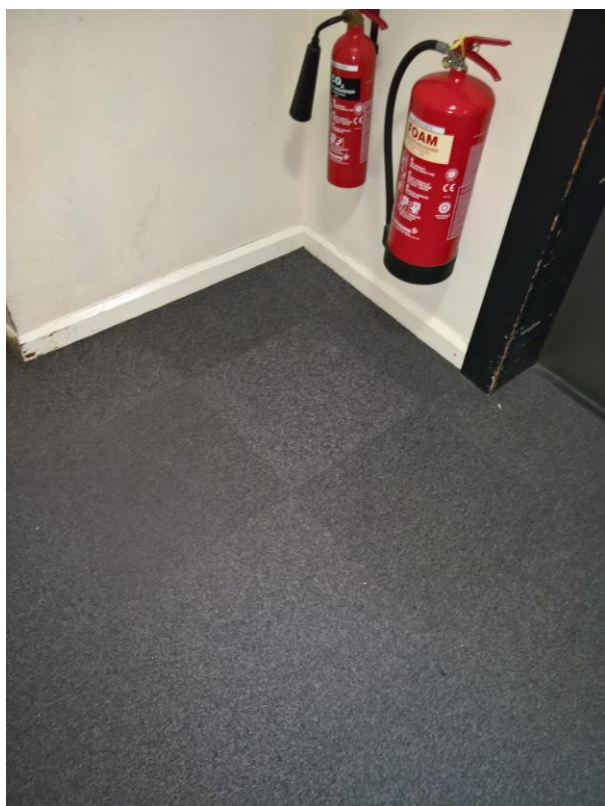
**First Floor 1, Circulation – Stairs TAJAGG-DH-1-S1**

**Position Location :** Floor

Inspection Date	13/9/2016		
Component:	<b>Orange Floor Tiles</b>	Sample No.	<b>VCFD001470 - 1S1</b>
Survey Type	Type 2	Surveyor	Richard Farmer
Asbestos type	<b>Chrysotile</b>		
Quantity of Material	<b>20m<sup>2</sup></b>		

### Material Assessment

Material	1	Extent of Damage	0
Surface Treatment	0	Asbestos Type	1
<b>Material Assessment Total:</b>	<b>2</b>	<b>D</b>	



### Comments:

Incorporate asbestos containing materials into management plan until removal.

### Priority Assessment

Main Type of Activity	1	Extent of Material	2
Maintenance Activity	0	Location	2
Accessibility	0	Number of Occupants	1
Frequency of use	3	Average time is in use	3
Frequency of maintenance activity	0	<b>Risk Assessment Total:</b>	<b>4</b>
<b>Total Score:</b>	<b>6</b>	<b>Sound</b>	

Actions Arising	Due Date	Est. Cost

Re-Inspection Schedule:	Status	Due Date
	 Due after six Months	13-9-2017



## Delta House TAJHQ

**Sample Record Number:** FD001462

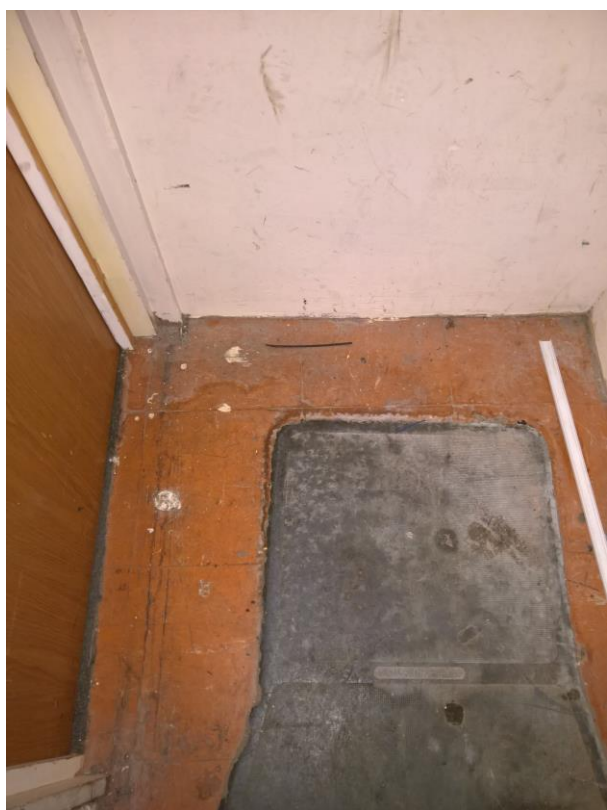
**Third Floor 3, Lift Motor Room TAJAGG-DH-3-04**

**Position Location :**Floor

Inspection Date	13/9/2016		
Component:	<b>Bitumen Backed Orange Floor Tiles</b>	Sample No.	<b>FD001462</b>
Survey Type	Type 2	Surveyor	Richard Farmer
Asbestos type	<b>Chrysotile</b>		
Quantity of Material	<b>2m<sup>2</sup></b>		

### Material Assessment

Material	1	Extent of Damage	1
Surface Treatment	0	Asbestos Type	1
<b>Material Assessment Total:</b>	<b>3</b>	<b>D</b>	



### Comments:

Keep Asbestos containing materials on management plan and continue to monitor.

### Priority Assessment

Main Type of Activity	0	Extent of Material	1
Maintenance Activity	0	Location	3
Accessibility	2	Number of Occupants	1
Frequency of use	0	Average time is in use	0
Frequency of maintenance activity	0	<b>Risk Assessment Total:</b>	<b>2</b>
<b>Total Score:</b>	<b>5</b>	<b>Sound</b>	

Actions Arising	Due Date	Est. Cost

Re-Inspection Schedule:	Status	Due Date
	 Due after six Months	13-9-2017

## Delta House TAJHQ

**Sample Record Number:** VCFD001462 - 308

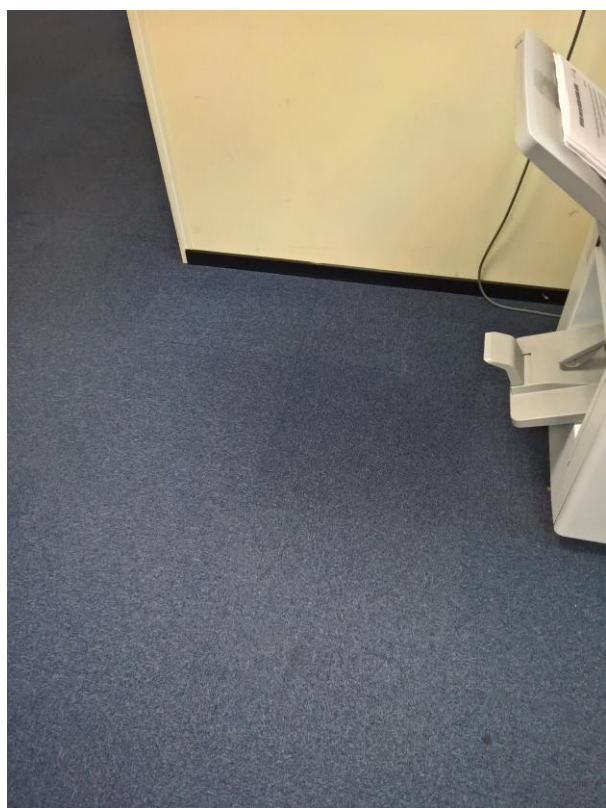
**Third Floor 3, Photocopy Room TAJAGG-DH-3-08**

**Position Location :** Floor

Inspection Date	3/11/2016		
Component:	<b>Bitumen Backed Orange Floor Tiles</b>	Sample No.	<b>VCFD001462 - 308</b>
Survey Type	Type 2	Surveyor	Richard Farmer
Asbestos type	<b>Chrysotile</b>		
Quantity of Material	<b>20m<sup>2</sup></b>		

### Material Assessment

Material	1	Extent of Damage	1
Surface Treatment	0	Asbestos Type	1
<b>Material Assessment Total:</b>	<b>3</b>	<b>D</b>	



### Comments:

Keep ACM on management plan and continue to monitor.

### Priority Assessment

Main Type of Activity	1	Extent of Material	2
Maintenance Activity	0	Location	2
Accessibility	0	Number of Occupants	1
Frequency of use	3	Average time is in use	2
Frequency of maintenance activity	0	<b>Risk Assessment Total:</b>	<b>4</b>
<b>Total Score:</b>	<b>7</b>	<b>Sound</b>	

Actions Arising	Due Date	Est. Cost
Label & Manage	3-11-2016	£0

Re-Inspection Schedule:	Status	Due Date
	 Due after six Months	13-9-2017



## Delta House TAJHQ

**Sample Record Number:** VCFD001462 - 3S1

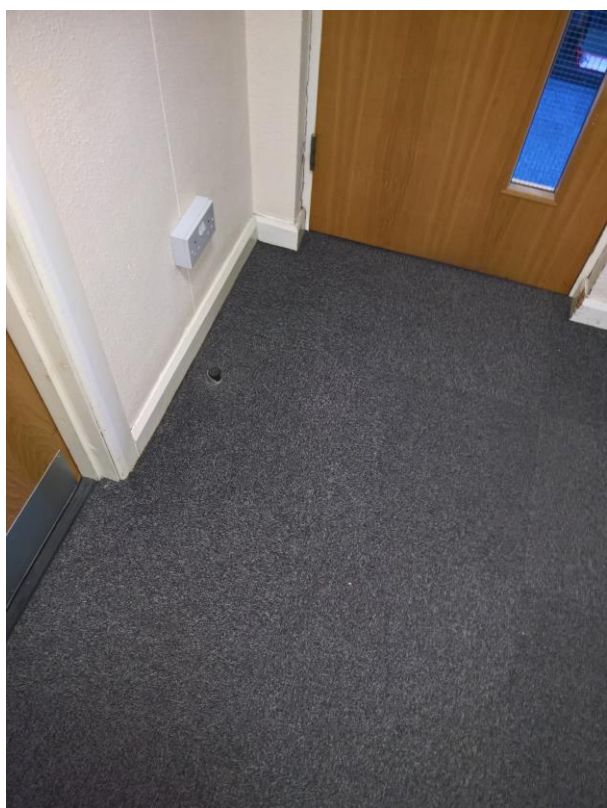
**Third Floor 3, Circulation – Stairs TAJAGG-DH-3-S1**

**Position Location :** Floor

Inspection Date	13/9/2016		
Component:	<b>Bitumen Backed Orange Floor Tiles</b>	Sample No.	<b>VCFD001462 - 3S1</b>
Survey Type	Type 2	Surveyor	Richard Farmer
Asbestos type	<b>Chrysotile</b>		
Quantity of Material	<b>10m<sup>2</sup></b>		

### Material Assessment

Material	1	Extent of Damage	1
Surface Treatment	0	Asbestos Type	1
<b>Material Assessment Total:</b>	<b>3</b>	<b>D</b>	



### Comments:

Keep ACM on management plan and continue to monitor.

### Priority Assessment

Main Type of Activity	1	Extent of Material	1
Maintenance Activity	0	Location	2
Accessibility	0	Number of Occupants	2
Frequency of use	3	Average time is in use	2
Frequency of maintenance activity	0	<b>Risk Assessment Total:</b>	<b>4</b>
<b>Total Score:</b>	<b>7</b>	<b>Sound</b>	

Actions Arising	Due Date	Est. Cost
Label & Manage	3-11-2016	£0

Re-Inspection Schedule:	Status	Due Date
	 Due after six Months	13-9-2017

## Delta House TAJHQ

**Sample Record Number:** FD001465

**Third Floor 3, Circulation – Stairs TAJAGG-DH-3-S2**

**Position Location :** Floor

Inspection Date	13/9/2016		
Component:	<b>Orange Floor Tiles With Bitumen Adhesive</b>	Sample No.	<b>FD001465</b>
Survey Type	Type 2	Surveyor	Richard Farmer
Asbestos type	<b>Chrysotile</b>		
Quantity of Material	<b>20lm</b>		

### Material Assessment

Material	1	Extent of Damage	1
Surface Treatment	0	Asbestos Type	1
<b>Material Assessment Total:</b>	<b>3</b>	<b>D</b>	



### Comments:

Keep ACM on management plan and continue to monitor.

### Priority Assessment

Main Type of Activity	1	Extent of Material	2
Maintenance Activity	0	Location	2
Accessibility	2	Number of Occupants	0
Frequency of use	0	Average time is in use	0
Frequency of maintenance activity	0	<b>Risk Assessment Total:</b>	<b>3</b>
<b>Total Score:</b>	<b>6</b>	<b>Sound</b>	

Actions Arising	Due Date	Est. Cost
Label & Manage	14-11-2016	£0

Re-Inspection Schedule:	Status	Due Date
	 Due after six Months	13-9-2017

## Delta House TAJHQ

**Sample Record Number:** FD001466

**Third Floor 3, Circulation – Stairs TAJAGG-DH-3-S2**

**Position Location :**Stairs

Inspection Date	13/9/2016		
Component:	<b>Stair Nosing</b>	Sample No.	<b>FD001466</b>
Survey Type	Type 2	Surveyor	Richard Farmer
Asbestos type	<b>Chrysotile</b>		
Quantity of Material	<b>12lm</b>		

### Material Assessment

Material	1	Extent of Damage	0
Surface Treatment	0	Asbestos Type	1
<b>Material Assessment Total:</b>	<b>2</b>	<b>D</b>	



### Comments:

Keep ACM on management plan and continue to monitor.

### Priority Assessment

Main Type of Activity	1	Extent of Material	2
Maintenance Activity	0	Location	2
Accessibility	2	Number of Occupants	0
Frequency of use	0	Average time is in use	0
Frequency of maintenance activity	0	<b>Risk Assessment Total:</b>	<b>3</b>
<b>Total Score:</b>	<b>5</b>	<b>Sound</b>	

<b>Actions Arising</b>	<b>Due Date</b>	<b>Est. Cost</b>
Label & Manage	3-11-2016	£0

<b>Re-Inspection Schedule:</b>	<b>Status</b>	<b>Due Date</b>
	 Due after six Months	13-9-2017

## Delta House TAJHQ

**Sample Record Number:** FD001468

**Third Floor 3, Circulation – Stairs TAJAGG-DH-3-S2**

**Position Location :** Floor

Inspection Date	13/9/2016		
Component:	<b>Black Floor Tiles</b>	Sample No.	<b>FD001468</b>
Survey Type	Type 2	Surveyor	Richard Farmer
Asbestos type	<b>Chrysotile</b>		
Quantity of Material	<b>4m<sup>2</sup></b>		

### Material Assessment

Material	1	Extent of Damage	0
Surface Treatment	0	Asbestos Type	1
<b>Material Assessment Total:</b>	<b>2</b>	<b>D</b>	



### Comments:

Incorporate asbestos containing materials into management plan until removal.

### Priority Assessment

Main Type of Activity	1	Extent of Material	1
Maintenance Activity	0	Location	2
Accessibility	2	Number of Occupants	0
Frequency of use	0	Average time is in use	0
Frequency of maintenance activity	0	<b>Risk Assessment Total:</b>	<b>3</b>
<b>Total Score:</b>	<b>5</b>	<b>Sound</b>	

<b>Actions Arising</b>	<b>Due Date</b>	<b>Est. Cost</b>
Label Material	3-11-2016	£0

<b>Re-Inspection Schedule:</b>	<b>Status</b>	<b>Due Date</b>
	 Due after six Months	13-9-2017

## Delta House TAJHQ

**Sample Record Number:** FD001470

**Second Floor 2, Office TAJAGG-DH-2-05**

**Position Location :** Floor

Inspection Date	13/9/2016		
Component:	<b>Orange Floor Tiles With Bitumen Adhesive</b>	Sample No.	<b>FD001470</b>
Survey Type	Type 2	Surveyor	Richard Farmer
Asbestos type	<b>Chrysotile</b>		
Quantity of Material	<b>500m<sup>2</sup></b>		

### Material Assessment

Material	1	Extent of Damage	0
Surface Treatment	0	Asbestos Type	1
<b>Material Assessment Total:</b>	<b>2</b>	<b>D</b>	



### Comments:

Incorporate asbestos containing materials into management plan until removal.

### Priority Assessment

Main Type of Activity	1	Extent of Material	3
Maintenance Activity	0	Location	1
Accessibility	0	Number of Occupants	3
Frequency of use	3	Average time is in use	3
Frequency of maintenance activity	0	<b>Risk Assessment Total:</b>	<b>5</b>
<b>Total Score:</b>	<b>7</b>	<b>Sound</b>	

Actions Arising	Due Date	Est. Cost
Label & Manage	3-11-2016	£0

Re-Inspection Schedule:	Status	Due Date
	 Due after six Months	13-9-2017

## Delta House TAJHQ

**Sample Record Number:** VCFD001470 - 210

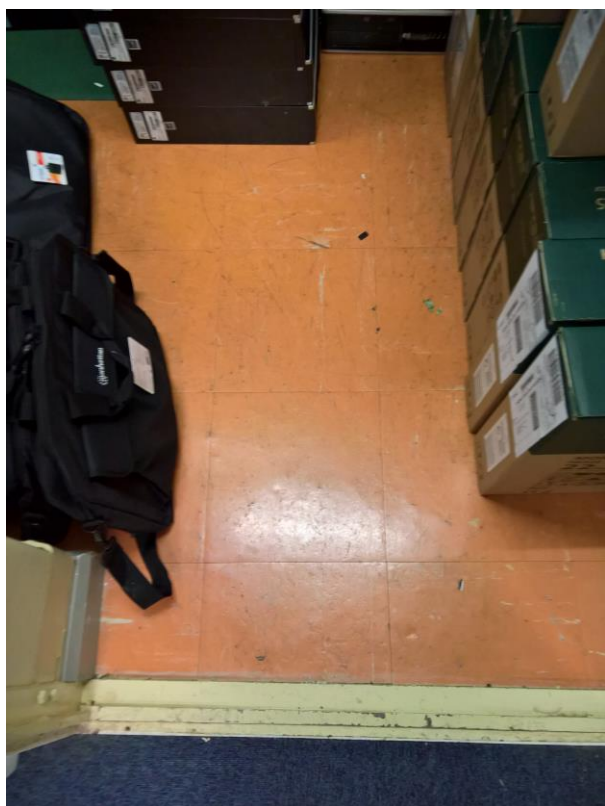
**Second Floor 2, Store TAJAGG-DH-2-10**

**Position Location :** Floor

Inspection Date	13/9/2016		
Component:	<b>Orange Floor Tiles</b>	Sample No.	<b>VCFD001470 - 210</b>
Survey Type	Type 2	Surveyor	Richard Farmer
Asbestos type	<b>Chrysotile</b>		
Quantity of Material	<b>6m<sup>2</sup></b>		

### Material Assessment

Material	1	Extent of Damage	0
Surface Treatment	0	Asbestos Type	1
<b>Material Assessment Total:</b>	<b>2</b>	<b>D</b>	



### Comments:

Incorporate asbestos containing materials into management plan until removal.

### Priority Assessment

Main Type of Activity	0	Extent of Material	1
Maintenance Activity	0	Location	3
Accessibility	2	Number of Occupants	0
Frequency of use	0	Average time is in use	0
Frequency of maintenance activity	0	<b>Risk Assessment Total:</b>	<b>2</b>
<b>Total Score:</b>	<b>4</b>	<b>Sound</b>	

<b>Actions Arising</b>	<b>Due Date</b>	<b>Est. Cost</b>
Label & Manage	3-11-2016	£0

<b>Re-Inspection Schedule:</b>	<b>Status</b>	<b>Due Date</b>
	 Due after six Months	13-9-2017



## Delta House TAJHQ

**Sample Record Number:** J056577 Presumptive Sample 100

**Second Floor 2, Store TAJAGG-DH-2-10**

**Position Location :2**

Inspection Date	13/9/2016		
Component:	<b>Steel Encased Door</b>	Sample No.	<b>J056577 Presumptive Sample 100</b>
Survey Type	Type 2	Surveyor	Richard Farmer
Asbestos type	<b>Amosite, Chrysotile, Crocidolite</b>		
Quantity of Material	<b>2m<sup>2</sup></b>		

### Material Assessment

Material	2	Extent of Damage	0
Surface Treatment	2	Asbestos Type	3
<b>Material Assessment Total:</b>	<b>7</b>	<b>B</b>	



### Comments:

This material requires no immediate attention.

### Priority Assessment

Main Type of Activity	0	Extent of Material	1
Maintenance Activity	0	Location	2
Accessibility	0	Number of Occupants	0
Frequency of use	0	Average time is in use	0
Frequency of maintenance activity	0	<b>Risk Assessment Total:</b>	<b>1</b>
<b>Total Score:</b>	<b>8</b>	<b>Slight Risk</b>	

Actions Arising	Due Date	Est. Cost
Label & Manage	3-11-2016	£0

Re-Inspection Schedule:	Status	Due Date
	 Due after six Months	13-9-2017

## Delta House TAJHQ

**Sample Record Number:** VCFD001470 - 2S1

**Second Floor 2, Circulation – Stairs TAJAGG-DH-2-S1**

**Position Location :** Floor

Inspection Date	13/9/2016		
Component:	<b>Orange Floor Tiles</b>	Sample No.	<b>VCFD001470 - 2S1</b>
Survey Type	Type 2	Surveyor	Richard Farmer
Asbestos type	<b>Chrysotile</b>		
Quantity of Material	<b>20m<sup>2</sup></b>		

### Material Assessment

Material	1	Extent of Damage	0
Surface Treatment	0	Asbestos Type	1
<b>Material Assessment Total:</b>	<b>2</b>	<b>D</b>	



### Comments:

Keep asbestos containing materials on management plan and continue to monitor.

### Priority Assessment

Main Type of Activity	0	Extent of Material	2
Maintenance Activity	0	Location	2
Accessibility	0	Number of Occupants	1
Frequency of use	3	Average time is in use	1
Frequency of maintenance activity	0	<b>Risk Assessment Total:</b>	<b>3</b>
<b>Total Score:</b>	<b>5</b>	<b>Sound</b>	

<b>Actions Arising</b>	<b>Due Date</b>	<b>Est. Cost</b>
Label & Manage	3-11-2016	£0

<b>Re-Inspection Schedule:</b>	<b>Status</b>	<b>Due Date</b>
	 Due after six Months	13-9-2017

## **Delta House TAJHQ**

**Sample Record Number:** FD001467

**Second Floor 2, Circulation – Stairs TAJAGG-DH-2-S2**

**Position Location :** Ceiling Level

Inspection Date	13/9/2016		
Component:	<b>Insulating Board Upstand</b>	Sample No.	<b>FD001467</b>
Survey Type	Type 2	Surveyor	Richard Farmer
Asbestos type	<b>Amosite</b>		
Quantity of Material	<b>5m<sup>2</sup></b>		

### **Material Assessment**

Material	2	Extent of Damage	1
Surface Treatment	2	Asbestos Type	2
<b>Material Assessment Total:</b>	<b>7</b>	<b>B</b>	



### **Comments:**

Keep ACM on management plan and continue to monitor. Item is unsealed above ceiling tiles.

### **Priority Assessment**

Main Type of Activity	0	Extent of Material	1
Maintenance Activity	0	Location	2
Accessibility	0	Number of Occupants	0
Frequency of use	0	Average time is in use	0
Frequency of maintenance activity	0	<b>Risk Assessment Total:</b>	<b>1</b>
<b>Total Score:</b>	<b>8</b>	<b>Slight Risk</b>	

<b>Actions Arising</b>	<b>Due Date</b>	<b>Est. Cost</b>
Encapsulate, Label & Manage	3-11-2016	£0

<b>Re-Inspection Schedule:</b>	<b>Status</b>	<b>Due Date</b>
	 Due after six Months	13-9-2017

## Delta House TAJHQ

**Sample Record Number:** VCFD001465 - 2S2

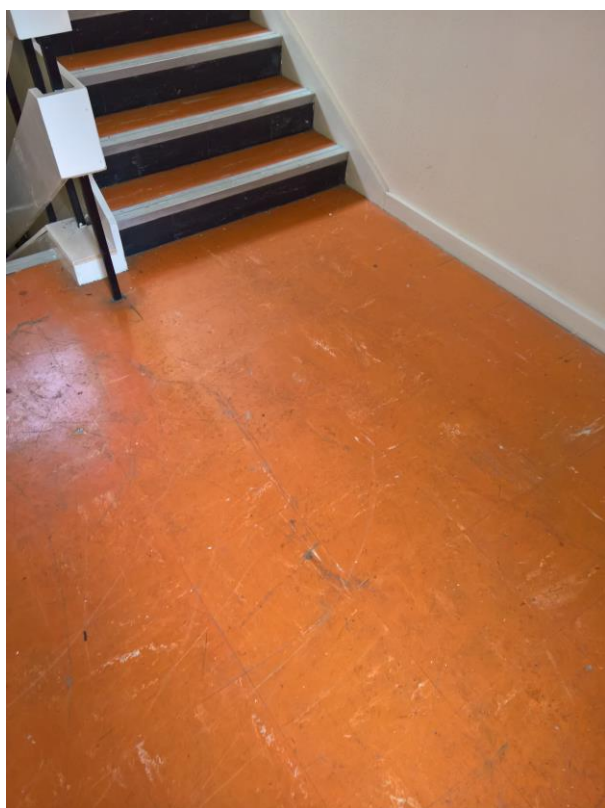
**Second Floor 2, Circulation – Stairs TAJAGG-DH-2-S2**

**Position Location :** Floor

Inspection Date	13/9/2016		
Component:	<b>Orange Floor Tiles With Bitumen Adhesive</b>	Sample No.	<b>VCFD001465 - 2S2</b>
Survey Type	Type 2	Surveyor	Richard Farmer
Asbestos type	<b>Chrysotile</b>		
Quantity of Material	<b>10m<sup>2</sup></b>		

### Material Assessment

Material	1	Extent of Damage	1
Surface Treatment	0	Asbestos Type	1
<b>Material Assessment Total:</b>	<b>3</b>	<b>D</b>	



### Comments:

Keep ACM on management plan and continue to monitor.

### Priority Assessment

Main Type of Activity	0	Extent of Material	1
Maintenance Activity	0	Location	2
Accessibility	2	Number of Occupants	0
Frequency of use	0	Average time is in use	0
Frequency of maintenance activity	0	<b>Risk Assessment Total:</b>	<b>2</b>
<b>Total Score:</b>	<b>5</b>	<b>Sound</b>	

Actions Arising	Due Date	Est. Cost
Label & Manage	3-11-2016	£0

Re-Inspection Schedule:	Status	Due Date
	 Due after six Months	13-9-2017

## Delta House TAJHQ

**Sample Record Number:** VCFD001466 - 2S2

**Second Floor 2, Circulation – Stairs TAJAGG-DH-2-S2**

**Position Location :**Stairs

Inspection Date	13/9/2016		
Component:	Stair Nosing	Sample No.	VCFD001466 - 2S2
Survey Type	Type 2	Surveyor	Richard Farmer
Asbestos type	Chrysotile		
Quantity of Material	20lm		

### Material Assessment

Material	1	Extent of Damage	0
Surface Treatment	0	Asbestos Type	1
<b>Material Assessment Total:</b>	<b>2</b>	<b>D</b>	



**Comments:**

### Priority Assessment

Main Type of Activity	0	Extent of Material	2
Maintenance Activity	0	Location	2
Accessibility	2	Number of Occupants	0
Frequency of use	0	Average time is in use	0
Frequency of maintenance activity	0	<b>Risk Assessment Total:</b>	<b>2</b>
<b>Total Score:</b>	<b>4</b>	<b>Sound</b>	

<b>Actions Arising</b>	<b>Due Date</b>	<b>Est. Cost</b>
Label & Manage	3-11-2016	£0

<b>Re-Inspection Schedule:</b>	<b>Status</b>	<b>Due Date</b>
	 Due after six Months	13-9-2017

## Delta House TAJHQ

**Sample Record Number:** VCFD001468 - 2S2

**Second Floor 2, Circulation – Stairs TAJAGG-DH-2-S2**

**Position Location :**Stairs

Inspection Date	13/9/2016		
Component:	<b>Black Floor Tiles</b>	Sample No.	<b>VCFD001468 - 2S2</b>
Survey Type	Type 2	Surveyor	Richard Farmer
Asbestos type	<b>Chrysotile</b>		
Quantity of Material	<b>5m<sup>2</sup></b>		

### Material Assessment

Material	1	Extent of Damage	0
Surface Treatment	0	Asbestos Type	1
<b>Material Assessment Total:</b>	<b>2</b>	<b>D</b>	



### Comments:

Keep ACM on management plan and continue to monitor.

### Priority Assessment

Main Type of Activity	0	Extent of Material	1
Maintenance Activity	0	Location	2
Accessibility	2	Number of Occupants	0
Frequency of use	0	Average time is in use	0
Frequency of maintenance activity	0	<b>Risk Assessment Total:</b>	<b>2</b>
<b>Total Score:</b>	<b>4</b>	<b>Sound</b>	

<b>Actions Arising</b>	<b>Due Date</b>	<b>Est. Cost</b>
Label & Manage	3-11-2016	£0

<b>Re-Inspection Schedule:</b>	<b>Status</b>	<b>Due Date</b>
	 Due after six Months	13-9-2017



## Delta House TAJHQ

**Sample Record Number:** FD001457

**Roof PR, Plant Room TAJAGG-DH-PR-01**

**Position Location :** Pipework

Inspection Date	13/9/2016		
Component:	<b>Pipe Gasket</b>	Sample No.	<b>FD001457</b>
Survey Type	Type 2	Surveyor	Richard Farmer
Asbestos type	<b>Chrysotile</b>		
Quantity of Material	<b>14N°</b>		

### Material Assessment

Material	1	Extent of Damage	0
Surface Treatment	0	Asbestos Type	1
<b>Material Assessment Total:</b>	<b>2</b>	<b>D</b>	



### Comments:

Incorporate asbestos containing materials into management plan until removal.

### Priority Assessment

Main Type of Activity	0	Extent of Material	0
Maintenance Activity	0	Location	2
Accessibility	0	Number of Occupants	1
Frequency of use	0	Average time is in use	0
Frequency of maintenance activity	0	<b>Risk Assessment Total:</b>	<b>1</b>
<b>Total Score:</b>	<b>3</b>	<b>Sound</b>	

<b>Actions Arising</b>	<b>Due Date</b>	<b>Est. Cost</b>
Label & Manage	3-11-2016	£0

<b>Re-Inspection Schedule:</b>	<b>Status</b>	<b>Due Date</b>
	 Due after six Months	13-9-2017

## Delta House TAJHQ

**Sample Record Number:** FD001458

**Roof PR, Plant Room TAJAGG-DH-PR-01**

**Position Location :** Ceiling

Inspection Date	13/9/2016		
Component:	<b>Cement Cowl</b>	Sample No.	<b>FD001458</b>
Survey Type	Type 2	Surveyor	Richard Farmer
Asbestos type	<b>Amosite, Chrysotile</b>		
Quantity of Material	<b>2Nº</b>		

### Material Assessment

Material	1	Extent of Damage	1
Surface Treatment	1	Asbestos Type	2
<b>Material Assessment Total:</b>	<b>5</b>	<b>C</b>	



### Comments:

Incorporate asbestos containing materials into management plan until removal.

### Priority Assessment

Main Type of Activity	0	Extent of Material	1
Maintenance Activity	0	Location	2
Accessibility	0	Number of Occupants	1
Frequency of use	0	Average time is in use	0
Frequency of maintenance activity	0	<b>Risk Assessment Total:</b>	<b>1</b>
<b>Total Score:</b>	<b>6</b>	<b>Sound</b>	

<b>Actions Arising</b>	<b>Due Date</b>	<b>Est. Cost</b>
Label & Manage	3-11-2016	£0

<b>Re-Inspection Schedule:</b>	<b>Status</b>	<b>Due Date</b>
	 Due after six Months	13-9-2017

## Delta House TAJHQ

**Sample Record Number:** J056577 Presumptive Sample 34

**Roof PR, Plant Room TAJAGG-DH-PR-01**

**Position Location :** Lift Motor

Inspection Date	3/11/2016		
Component:	Lift Brake Pads	Sample No.	J056577 Presumptive Sample 34
Survey Type	Type 2	Surveyor	Richard Farmer
Asbestos type	Chrysotile		
Quantity of Material	1N°		

### Material Assessment

Material	1	Extent of Damage	0
Surface Treatment	0	Asbestos Type	1
<b>Material Assessment Total:</b>	<b>2</b>	<b>D</b>	



### Comments:

This material requires no immediate attention. No access during 2016 re-inspection.

### Priority Assessment

Main Type of Activity	1	Extent of Material	0
Maintenance Activity	0	Location	2
Accessibility	1	Number of Occupants	1
Frequency of use	0	Average time is in use	0
Frequency of maintenance activity	0	<b>Risk Assessment Total:</b>	<b>2</b>
<b>Total Score:</b>	<b>4</b>	<b>Sound</b>	

Actions Arising	Due Date	Est. Cost
Label & Manage	3-11-2016	£0

Re-Inspection Schedule:	Status	Due Date
	 Due after six Months	13-9-2017

## Delta House TAJHQ

**Sample Record Number:** VCFD001458 - 02

**Roof PR, Plant Room TAJAGG-DH-PR-02**

**Position Location :** Ceiling

Inspection Date	13/9/2016		
Component:	<b>Cement Cowl</b>	Sample No.	<b>VCFD001458 - 02</b>
Survey Type	Type 2	Surveyor	Richard Farmer
Asbestos type	<b>Amosite, Chrysotile</b>		
Quantity of Material	<b>2Nº</b>		

### Material Assessment

Material	1	Extent of Damage	1
Surface Treatment	1	Asbestos Type	2
<b>Material Assessment Total:</b>	<b>5</b>	<b>C</b>	




### Comments:

Incorporate asbestos containing materials into management plan until removal.

### Priority Assessment

Main Type of Activity	0	Extent of Material	1
Maintenance Activity	0	Location	2
Accessibility	0	Number of Occupants	1
Frequency of use	0	Average time is in use	0
Frequency of maintenance activity	0	<b>Risk Assessment Total:</b>	<b>1</b>
<b>Total Score:</b>	<b>6</b>	<b>Sound</b>	

<b>Actions Arising</b>	<b>Due Date</b>	<b>Est. Cost</b>
Label & Manage	3-11-2016	£0

<b>Re-Inspection Schedule:</b>	<b>Status</b>	<b>Due Date</b>
	 Due after six Months	13-9-2017

## Delta House TAJHQ

**Sample Record Number:** VCFD001457 - 02

**Roof PR, Plant Room TAJAGG-DH-PR-02**

**Position Location :** Pipework

Inspection Date	13/9/2016		
Component:	<b>Pipe Gasket</b>	Sample No.	<b>VCFD001457 - 02</b>
Survey Type	Type 2	Surveyor	Richard Farmer
Asbestos type	<b>Chrysotile</b>		
Quantity of Material	<b>1N°</b>		

### Material Assessment

Material	1	Extent of Damage	0
Surface Treatment	0	Asbestos Type	1
<b>Material Assessment Total:</b>	<b>2</b>	<b>D</b>	



### Comments:

Incorporate asbestos containing materials into management plan until removal.

### Priority Assessment

Main Type of Activity	0	Extent of Material	0
Maintenance Activity	0	Location	2
Accessibility	0	Number of Occupants	1
Frequency of use	0	Average time is in use	0
Frequency of maintenance activity	0	<b>Risk Assessment Total:</b>	<b>1</b>
<b>Total Score:</b>	<b>3</b>	<b>Sound</b>	

<b>Actions Arising</b>	<b>Due Date</b>	<b>Est. Cost</b>
Label & Manage	3-11-2016	£0

<b>Re-Inspection Schedule:</b>	<b>Status</b>	<b>Due Date</b>
	 Due after six Months	13-9-2017



## Delta House TAJHQ

**Sample Record Number:** FD001459

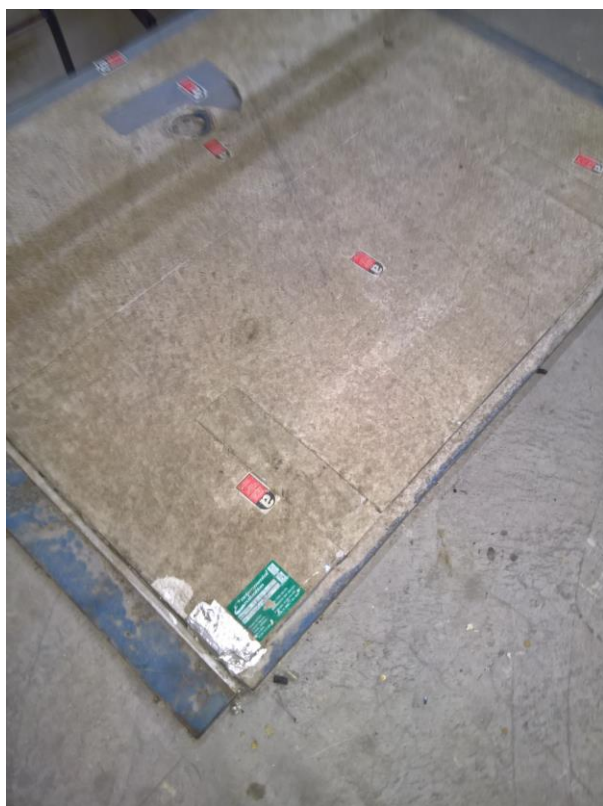
**Roof PR, Plant Room TAJAGG-DH-PR-02**

**Position Location :**Access Hatch

Inspection Date	13/9/2016		
Component:	<b>Insulating Board</b>	Sample No.	<b>FD001459</b>
Survey Type	Type 2	Surveyor	Richard Farmer
Asbestos type	<b>Amosite</b>		
Quantity of Material	<b>1m<sup>2</sup></b>		

### Material Assessment

Material	2	Extent of Damage	2
Surface Treatment	2	Asbestos Type	2
<b>Material Assessment Total:</b>	<b>8</b>	<b>B</b>	



### Comments:

Item has areas of damage. Encapsulation required.

### Priority Assessment

Main Type of Activity	0	Extent of Material	1
Maintenance Activity	2	Location	2
Accessibility	1	Number of Occupants	1
Frequency of use	0	Average time is in use	0
Frequency of maintenance activity	2	<b>Risk Assessment Total:</b>	<b>3</b>
<b>Total Score:</b>	<b>11</b>	<b>Slight Risk</b>	

<b>Actions Arising</b>	<b>Due Date</b>	<b>Est. Cost</b>
Encapsulate, Label & Manage	3-11-2016	£0

<b>Re-Inspection Schedule:</b>	<b>Status</b>	<b>Due Date</b>
	 Due after six Months	13-9-2017



## Delta House TAJHQ

**Sample Record Number:** FD001460

**Roof PR, Plant Room TAJAGG-DH-PR-02**

**Position Location :** Ceiling

Inspection Date	13/9/2016		
Component:	<b>Insulating Board Bulkhead</b>	Sample No.	<b>FD001460</b>
Survey Type	Type 2	Surveyor	Richard Farmer
Asbestos type	<b>Amosite</b>		
Quantity of Material	<b>5lm</b>		

### Material Assessment

Material	2	Extent of Damage	1
Surface Treatment	1	Asbestos Type	2
<b>Material Assessment Total:</b>	<b>6</b>	<b>C</b>	



### Comments:

Keep asbestos containing materials on management plan and continue to monitor.

### Priority Assessment

Main Type of Activity	0	Extent of Material	1
Maintenance Activity	0	Location	2
Accessibility	0	Number of Occupants	1
Frequency of use	0	Average time is in use	0
Frequency of maintenance activity	0	<b>Risk Assessment Total:</b>	<b>1</b>
<b>Total Score:</b>	<b>7</b>	<b>Sound</b>	

<b>Actions Arising</b>	<b>Due Date</b>	<b>Est. Cost</b>
Label & Manage	3-11-2016	£0

<b>Re-Inspection Schedule:</b>	<b>Status</b>	<b>Due Date</b>
	 Due after six Months	13-9-2017

## Delta House TAJHQ

**Sample Record Number:** VCFD001460 - 04

**Roof PR, Lift Motor Room TAJAGG-DH-PR-04**

**Position Location :** Ceiling

Inspection Date	13/9/2016		
Component:	<b>Insulating Board Bulkhead</b>	Sample No.	<b>VCFD001460 - 04</b>
Survey Type	Type 2	Surveyor	Richard Farmer
Asbestos type	<b>Amosite</b>		
Quantity of Material	<b>5lm</b>		

### Material Assessment

Material	2	Extent of Damage	1
Surface Treatment	1	Asbestos Type	2
<b>Material Assessment Total:</b>	<b>6</b>	<b>C</b>	



### Comments:

Keep asbestos containing materials on management plan and continue to monitor.

### Priority Assessment

Main Type of Activity	1	Extent of Material	1
Maintenance Activity	0	Location	2
Accessibility	0	Number of Occupants	1
Frequency of use	0	Average time is in use	0
Frequency of maintenance activity	0	<b>Risk Assessment Total:</b>	<b>2</b>
<b>Total Score:</b>	<b>8</b>	<b>Slight Risk</b>	

<b>Actions Arising</b>	<b>Due Date</b>	<b>Est. Cost</b>
Label & Manage	3-11-2016	£0

<b>Re-Inspection Schedule:</b>	<b>Status</b>	<b>Due Date</b>
	 Due after six Months	13-9-2017

# Bulk Analysis Report

**Client: Organisation O2**

**Address: 004 - Delta House TAJHQ**

**Date: 08/12/2016**

**Survey Report Number J099843**

Sample Ref. No.	Sample Location	Sample Description	Asbestos Types
J056577 Presumptive Sample 111	Plant Room TAJAGG-DH-G-09	Wall Heater	Crocidolite
J056577 Presumptive Sample 91	Electrical Substation TAJAGG-DH-G-29	Electrical Switch Gear	Chrysotile
VCFD00147 0 - 104	Office TAJAGG-DH-1-04	Orange Floor Tiles	Chrysotile
VCFD00146 5 - 109	Circulation – Lobby TAJAGG-DH-1-09	Orange Floor Tiles	Chrysotile
VCFD00147 0 - 1S1	Circulation – Stairs TAJAGG-DH-1-S1	Orange Floor Tiles	Chrysotile
FD001462	Lift Motor Room TAJAGG-DH-3-04	Bitumen Backed Orange Floor Tiles	Chrysotile
VCFD00146 2 - 308	Photocopy Room TAJAGG-DH-3-08	Bitumen Backed Orange Floor Tiles	Chrysotile
VCFD00146 2 - 3S1	Circulation – Stairs TAJAGG-DH-3-S1	Bitumen Backed Orange Floor Tiles	Chrysotile
FD001465	Circulation – Stairs TAJAGG-DH-3-S2	Orange Floor Tiles With Bitumen Adhesive	Chrysotile
FD001466	Circulation – Stairs TAJAGG-DH-3-S2	Stair Nosing	Chrysotile
FD001468	Circulation – Stairs TAJAGG-DH-3-S2	Black Floor Tiles	Chrysotile
FD001470	Office TAJAGG-DH-2-05	Orange Floor Tiles With Bitumen Adhesive	Chrysotile
VCFD00147 0 - 210	Store TAJAGG-DH-2-10	Orange Floor Tiles	Chrysotile
J056577 Presumptive Sample 100	Store TAJAGG-DH-2-10	Steel Encased Door	Amosite Chrysotile Crocidolite

Sample analysis was conducted in accordance with in house procedures and the methodology contained in MDSHS77 (Asbestos in bulk materials. Sampling and identification by polarised light microscopy. June 1994). The information provided concerning sample locations is as provided by the client no liability can be accepted for the accuracy of this information Comments, Opinions, Recommendations are outside the scope of our UKAS accreditation. Determination of concentration is outside the scope of laboratory accreditation

Key = Chrysotile: White Asbestos Amosite: Brown Asbestos Crocidolite: Blue Asbestos NAD: No Asbestos Detected

# Bulk Analysis Report

**Client: Organisation O2**

**Address: 004 - Delta House TAJHQ**

**Date: 08/12/2016**

**Survey Report Number J099843**

Sample Ref. No.	Sample Location	Sample Description	Asbestos Types
VCFD001470 - 2S1	Circulation – Stairs TAJAGG-DH-2-S1	Orange Floor Tiles	Chrysotile
FD001467	Circulation – Stairs TAJAGG-DH-2-S2	Insulating Board Upstand	Amosite
VCFD001465 - 2S2	Circulation – Stairs TAJAGG-DH-2-S2	Orange Floor Tiles With Bitumen Adhesive	Chrysotile
VCFD001466 - 2S2	Circulation – Stairs TAJAGG-DH-2-S2	Stair Nosing	Chrysotile
VCFD001468 - 2S2	Circulation – Stairs TAJAGG-DH-2-S2	Black Floor Tiles	Chrysotile
FD001457	Plant Room TAJAGG-DH-PR-01	Pipe Gasket	Chrysotile
FD001458	Plant Room TAJAGG-DH-PR-01	Cement Cowl	Amosite Chrysotile
J056577 Presumptive Sample 34	Plant Room TAJAGG-DH-PR-01	Lift Brake Pads	Chrysotile
VCFD001458 - 02	Plant Room TAJAGG-DH-PR-02	Cement Cowl	Amosite Chrysotile
VCFD001457 - 02	Plant Room TAJAGG-DH-PR-02	Pipe Gasket	Chrysotile
FD001459	Plant Room TAJAGG-DH-PR-02	Insulating Board	Amosite
FD001460	Plant Room TAJAGG-DH-PR-02	Insulating Board Bulkhead	Amosite
VCFD001460 - 04	Lift Motor Room TAJAGG-DH-PR-04	Insulating Board Bulkhead	Amosite

Sample analysis was conducted in accordance with in house procedures and the methodology contained in MDSHS77 (Asbestos in bulk materials. Sampling and identification by polarised light microscopy. June 1994). The information provided concerning sample locations is as provided by the client no liability can be accepted for the accuracy of this information Comments, Opinions, Recommendations are outside the scope of our UKAS accreditation. Determination of concentration is outside the scope of laboratory accreditation

Key = Chrysotile: White Asbestos Amosite: Brown Asbestos Crocidolite: Blue Asbestos NAD: No Asbestos Detected

**Areas With No Suspect Materials  
Within the Definition of this type of Survey**

<b>004 - Delta House</b>	<b>TAJHQ</b>
<b>Delta House</b>	<b>TAJHQ</b>
<b>Ground Floor</b>	<b>G</b>
<b>First Floor</b>	<b>1</b>
<b>Second Floor</b>	<b>2</b>
<b>Third Floor</b>	<b>3</b>
<b>Roof</b>	<b>PR</b>

# Asbestos Re-Inspection Schedule

Date: 8/12/2016

Survey Report Number J099843  
In Chronological Order

Due after six Months

Sample Location	Description	Comments	Due Date	Status
e Delta House,Ground Floor,Plant Room,TAJAGG-DH-G-09	Wall Heater		13/9/2017	Due after six Months
e Delta House,Ground Floor,Electrical Substation,TAJAGG-DH-G-29	Electrical Switch Gear		13/9/2017	Due after six Months
e Delta House,First Floor,Office,TAJAGG-DH-1-04	Orange Floor Tiles		13/9/2017	Due after six Months
e Delta House,First Floor,Circulation – Lobby,TAJAGG-DH-1-09	Orange Floor Tiles		13/9/2017	Due after six Months
e Delta House,First Floor,Circulation – Stairs,TAJAGG-DH-1-S1	Orange Floor Tiles		13/9/2017	Due after six Months
e Delta House,Third Floor,Lift Motor Room,TAJAGG-DH-3-04	Bitumen Backed Orange Floor Tiles		13/9/2017	Due after six Months
e Delta House,Third Floor,Photocopy Room,TAJAGG-DH-3-08	Bitumen Backed Orange Floor Tiles		13/9/2017	Due after six Months
e Delta House,Third Floor,Circulation – Stairs,TAJAGG-DH-3-S1	Bitumen Backed Orange Floor Tiles		13/9/2017	Due after six Months
e Delta House,Third Floor,Circulation – Stairs,TAJAGG-DH-3-S2	Orange Floor Tiles With Bitumen Adhesive		13/9/2017	Due after six Months
e Delta House,Third Floor,Circulation – Stairs,TAJAGG-DH-3-S2	Stair Nosing		13/9/2017	Due after six Months
e Delta House,Third Floor,Circulation – Stairs,TAJAGG-DH-3-S2	Black Floor Tiles		13/9/2017	Due after six Months
e Delta House,Second Floor,Office,TAJAGG-DH-2-05	Orange Floor Tiles With Bitumen Adhesive		13/9/2017	Due after six Months
e Delta House,Second Floor,Store,TAJAGG-DH-2-10	Orange Floor Tiles		13/9/2017	Due after six Months

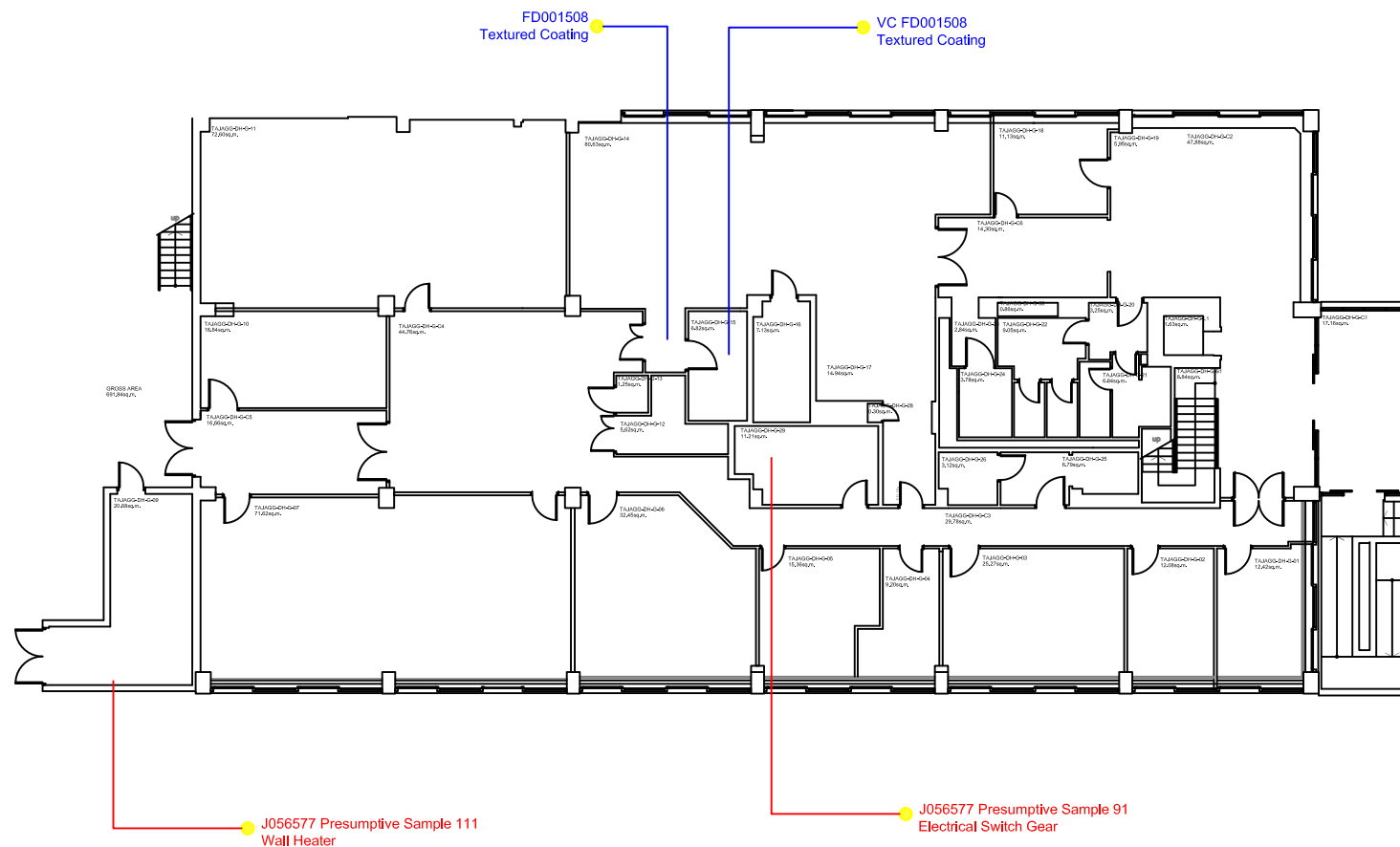


### Due after six Months

Sample Location	Description	Comments	Due Date	Status
e Delta House,Second Floor,Store,TAJAGG-DH-2-10	Steel Encased Door		13/9/2017	Due after six Months
e Delta House,Second Floor,Circulation – Stairs,TAJAGG-DH-2-S1	Orange Floor Tiles		13/9/2017	Due after six Months
e Delta House,Second Floor,Circulation – Stairs,TAJAGG-DH-2-S2	Insulating Board Upstand		13/9/2017	Due after six Months
e Delta House,Second Floor,Circulation – Stairs,TAJAGG-DH-2-S2	Orange Floor Tiles With Bitumen Adhesive		13/9/2017	Due after six Months
e Delta House,Second Floor,Circulation – Stairs,TAJAGG-DH-2-S2	Stair Nosing		13/9/2017	Due after six Months
e Delta House,Second Floor,Circulation – Stairs,TAJAGG-DH-2-S2	Black Floor Tiles		13/9/2017	Due after six Months
e Delta House,Roof,Plant Room,TAJAGG-DH-PR-01	Pipe Gasket		13/9/2017	Due after six Months
e Delta House,Roof,Plant Room,TAJAGG-DH-PR-01	Cement Cowl		13/9/2017	Due after six Months
e Delta House,Roof,Plant Room,TAJAGG-DH-PR-01	Lift Brake Pads		13/9/2017	Due after six Months
e Delta House,Roof,Plant Room,TAJAGG-DH-PR-02	Cement Cowl		13/9/2017	Due after six Months
e Delta House,Roof,Plant Room,TAJAGG-DH-PR-02	Pipe Gasket		13/9/2017	Due after six Months
e Delta House,Roof,Plant Room,TAJAGG-DH-PR-02	Insulating Board		13/9/2017	Due after six Months
e Delta House,Roof,Plant Room,TAJAGG-DH-PR-02	Insulating Board Bulkhead		13/9/2017	Due after six Months
e Delta House,Roof,Lift Motor Room,TAJAGG-DH-PR-04	Insulating Board Bulkhead		13/9/2017	Due after six Months

**Due after six Months**

Sample Location	Description	Comments	Due Date	Status
No Historical Events Pending				



Type of Survey

This is a Management Survey (Standard Sampling, Identification and Assessment Survey).

For major refurbishments /  
Pre demolition a  
Refurbishment/ Demolition  
survey must be undertaken.

See Report for Details

**DRAWING KEY**

ASBESTOS PRESENT

PRESUMED TO CONTAIN ASBESTOS

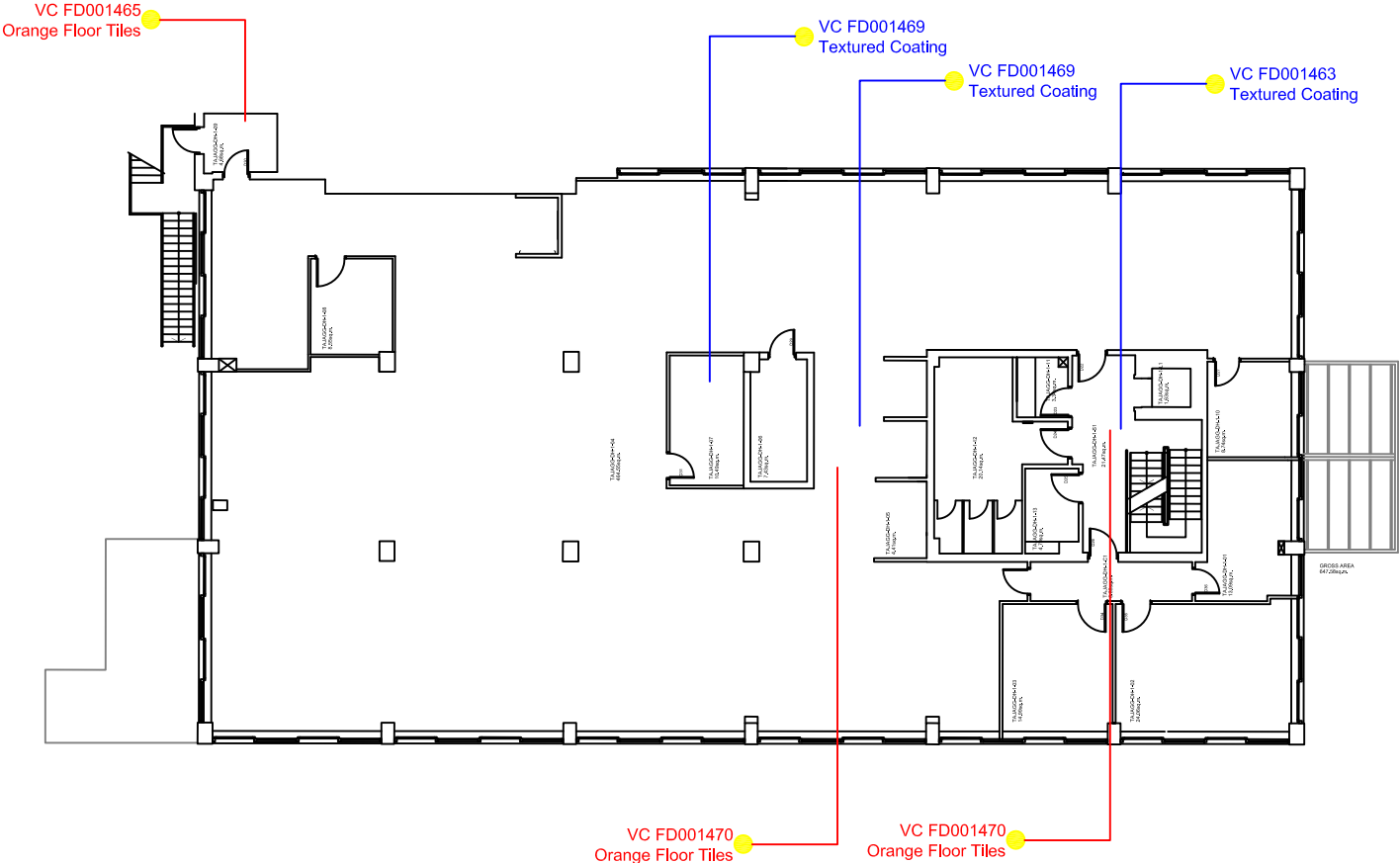
NO ASBESTOS DETECTED

OUTSIDE SCOPE OF SURVEY

NOT ACCESSED AREAS

Rev	Date	Report by	DWN	CHK

[illegible]



Type of Survey

This is a Management  
Survey (Standard  
Sampling, Identification  
and Assessment Survey).

See Report for Details

For major refurbishments /  
Pre demolition a  
Refurbishment/ Demolition  
survey must be undertaken.

DRAWING KEY

ASBESTOS PRESENT	
PRESUMED TO CONTAIN ASBESTOS	
NO ASBESTOS DETECTED	
OUTSIDE SCOPE OF SURVEY	
NOT ACCESSED AREAS	

Rev	Date	Report by	DWN	CHK



Rev	Description	Date	By

Black Country Partnership NHS Foundation Trust  
Headquarters, Delta House  
Greens Green Road  
West Bromwich, West Midlands  
B70 8PL

Black Country Partnership  
NHS Foundation Trust

Title:	Delta House - First Floor General Layout	Sheet:	A1
Drawn:	AJK	Rev:	A

Date: 19/2/2013 Scale: 1:100 Drawn By: TAJAGG-1, July 2016

VC FD001466  
Stair Nosing

VC FD001468  
Black Floor Tiles

VC FD001470  
Floor Tiles With Bitumen  
Adhesive

Presumptive Sample 100  
Board Within Metal Door

VC FD001463  
Textured Coating To Walls

FD001467  
Insulating Board Upstands  
VC FD001465  
Orange Floor Tiles With  
Bitumen Adhesive

FD001469  
Textured Coating To Ceiling






VC FD001463  
Textured Coating To Walls

FD001470  
Orange Floor Tiles

VC FD001470  
Orange Floor Tiles






For major refurbishments /  
Pre demolition a  
Refurbishment/ Demolition  
survey must be undertaken.

DRAWING KEY

ASBESTOS PRESENT	
PRESUMED TO CONTAIN ASBESTOS	
NO ASBESTOS DETECTED	
OUTSIDE SCOPE OF SURVEY	
NOT ACCESSED AREAS	

Rev	Date	Report by	DWN	CHK

[illegible]

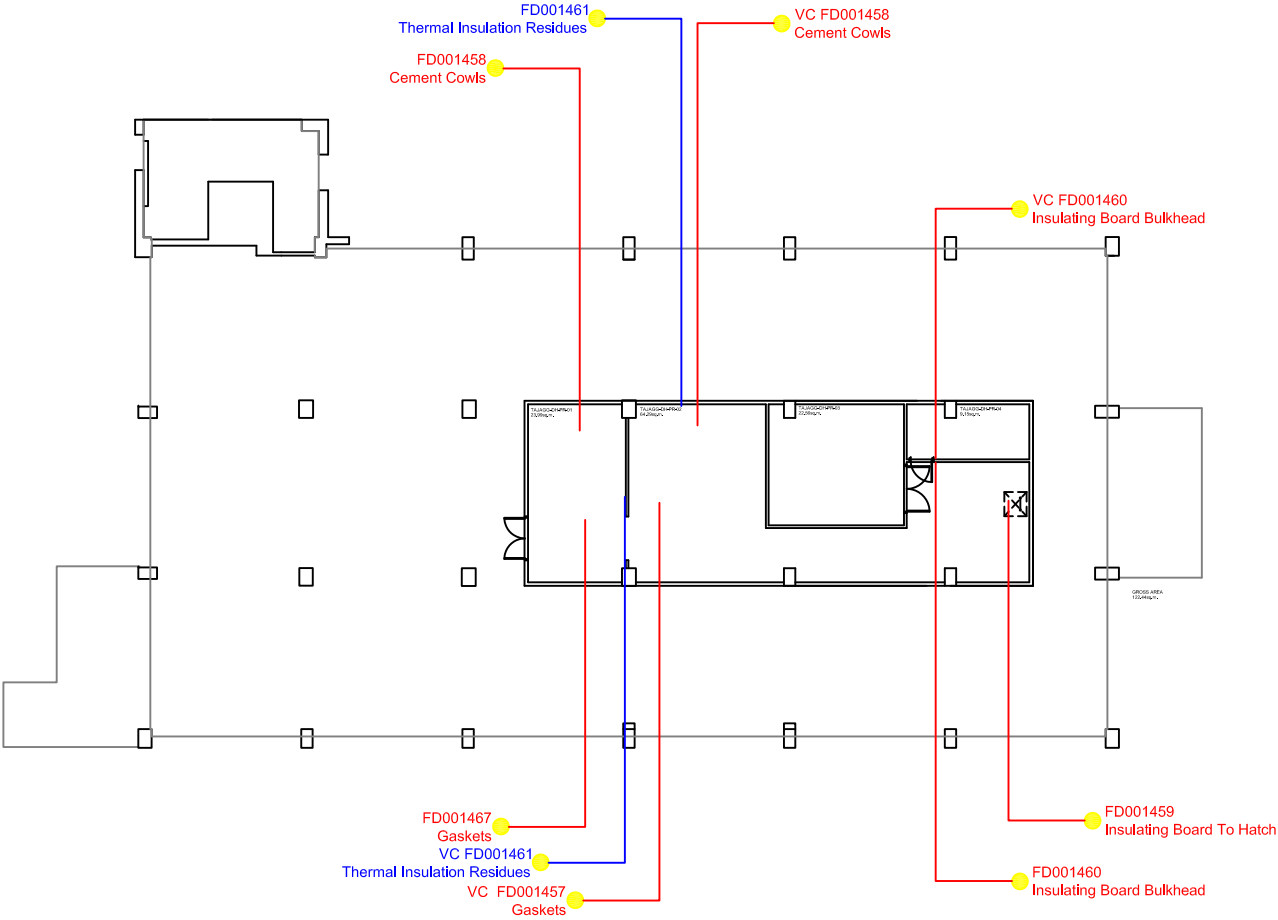
ASBESTOS PRESENT	
PRESUMED TO CONTAIN ASBESTOS	
NO ASBESTOS DETECTED	
OUTSIDE SCOPE OF SURVEY	
NOT ACCESSED AREAS	

Rev	Date	Report by	DWN	CHK

[illegible]



DO NOT SCALE: CONTRACTOR MUST CHECK ALL DIMENSIONS ON SITE BEFORE PREPARING TENDER DOCUMENTS OR COMMENCING ANY WORKS.



Type of Survey

This is a Management Survey (Standard Sampling, Identification and Assessment Survey). See Report for Details

For major refurbishments / Pre demolition a Refurbishment/ Demolition survey must be undertaken.

DRAWING KEY

ASBESTOS PRESENT	
PRESUMED TO CONTAIN ASBESTOS	
NO ASBESTOS DETECTED	
OUTSIDE SCOPE OF SURVEY	
NOT ACCESSED AREAS	

Rev	Date	Report by	DWN	CHK



Black Country Partnership NHS Foundation Trust Headquarters, Delta House Greets Green Road West Bromwich, West Midlands B70 9PL		Black Country Partnership NHS Foundation Trust	
Delta House - Roof Level General Layout		Sheet A1	
Drawn: AJK	Date: 19/2/2013	Scale: 1:100	DWG No: TA/ASDC/ASPB, June 2015