

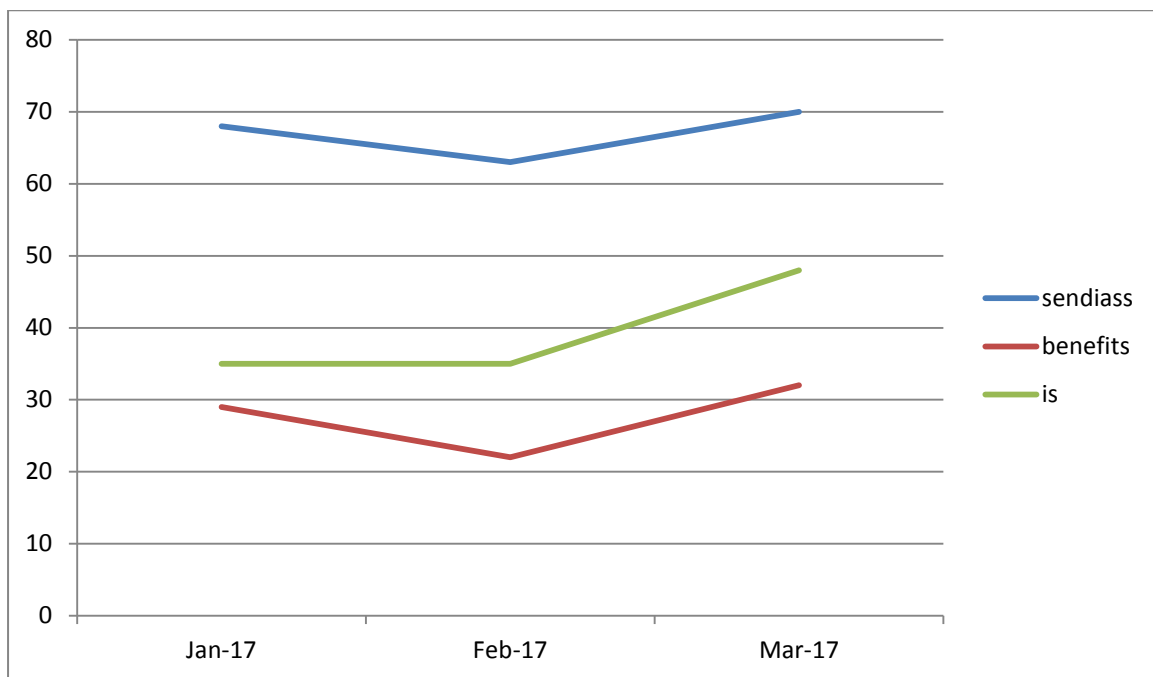
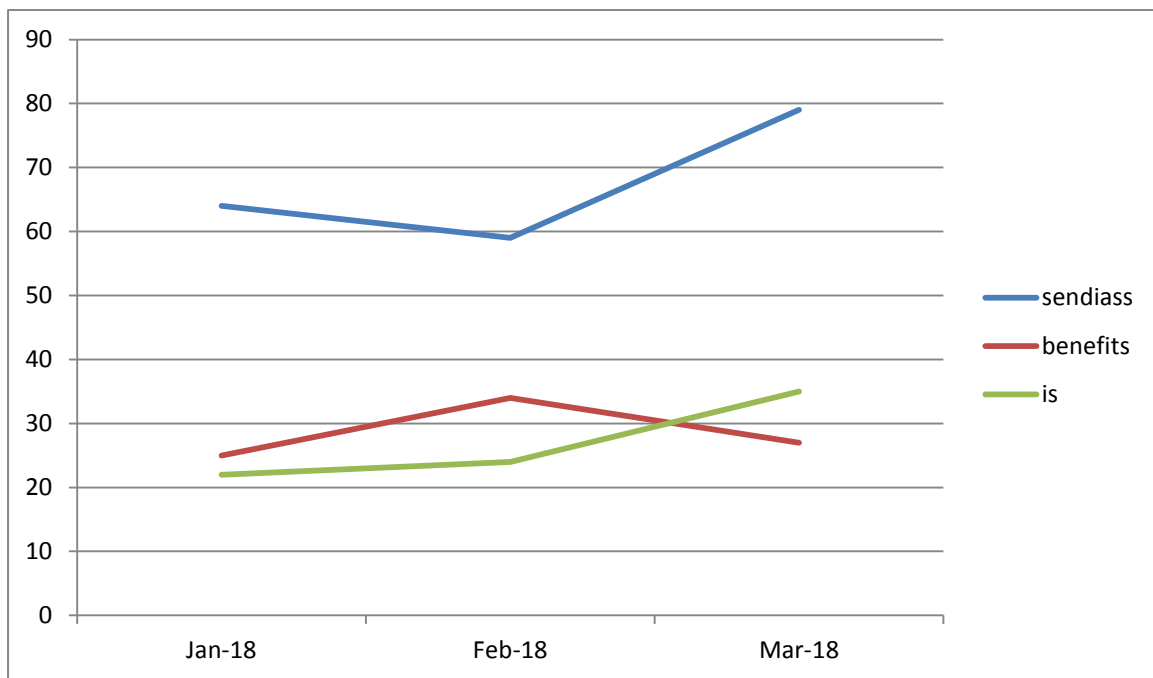


Richmond and Kingston Sendiass

Summary sheet 2016/17/18 families worked with (see breakdown data for number of contact)

2016/17	SENDIASS	Benefits	IS	FIS	Total	check
December	55	37	28	22	142	
January	68	29	35	38	170	
Feburary	63	22	35	22	142	
Total	186	88	98	82	454	454
March	70	32	48	27	177	
April	62	23	39	29	153	
May	73	39	40	31	183	
Total	205	94	127	87	513	513
YTD	391	182	225	169	967	967

2017/18	SENDIASS	Benefits	IS	FIS	Total	check
Q2						TC resigned, FIS redundant, summer holidays
July	53	36	35	16	140	
August	25	25	18	3	71	
September	53	21	27		101	
Total	131	82	80	19	302	
Q3						New TC recruited and left after a few weeks
October	58	35	33		126	
November	60	22	32		114	
December	51	15	17		83	
Total	169	72	82		323	
Q4						Additional sendiass to support case work in absence of TC
January	64	25	22		111	
February	59	34	24		117	
March	79	27	35		141	
Total	202	86	81		369	



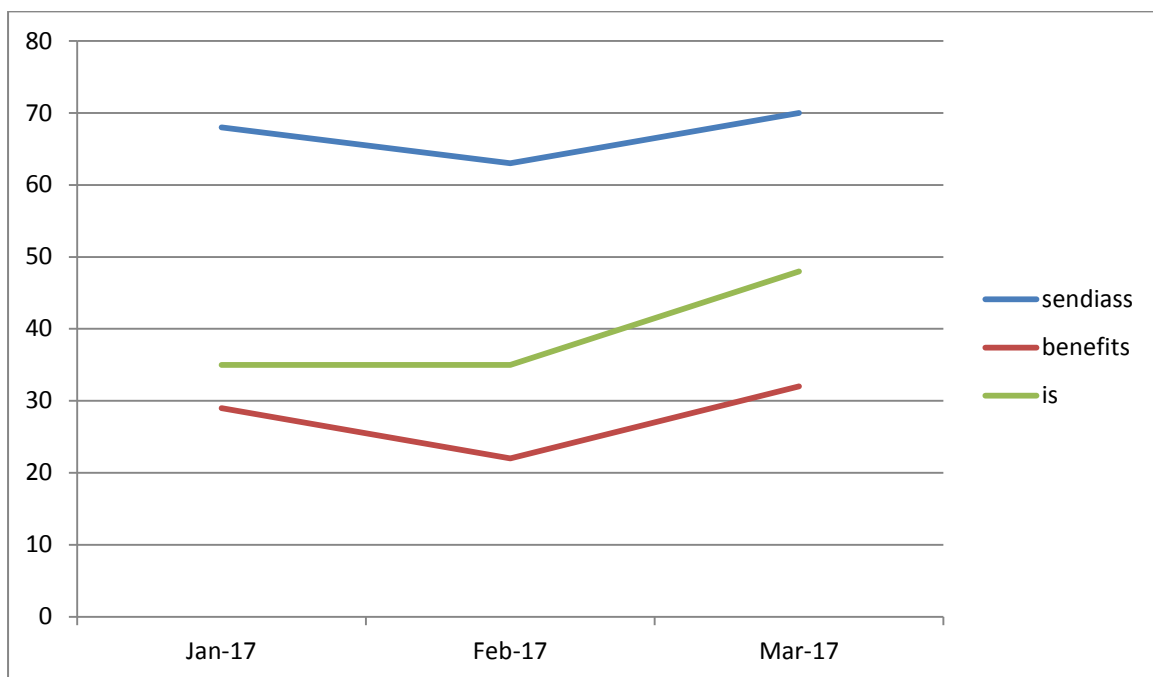
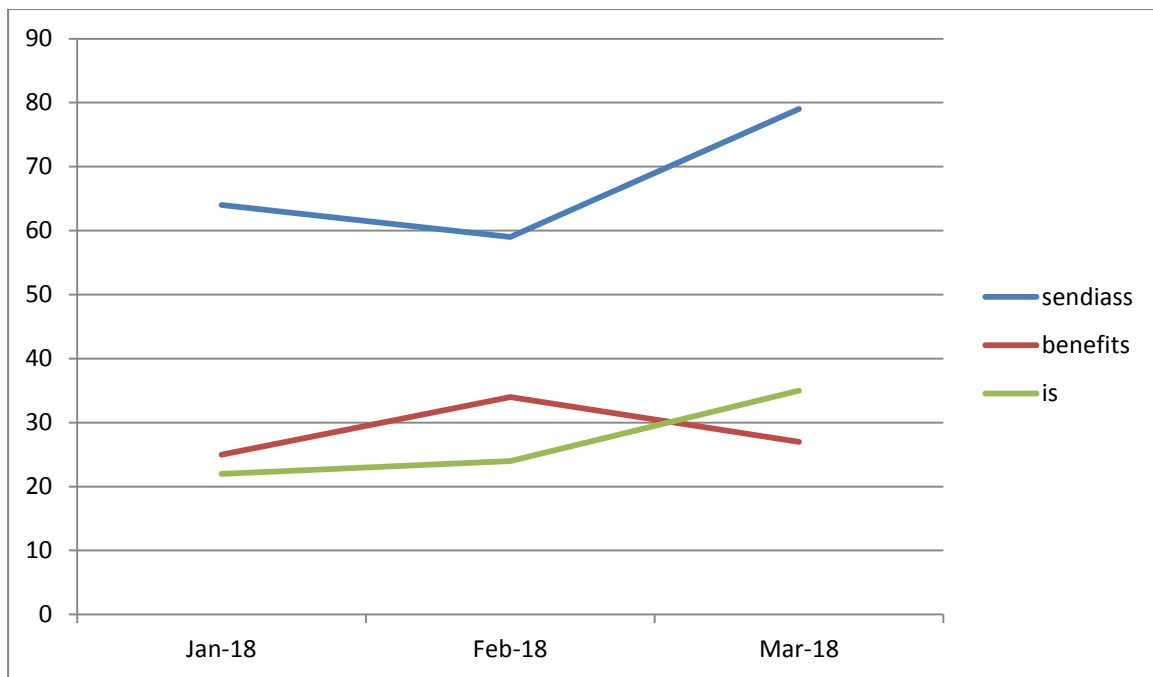
Comparing the same quarter across two years we can begin to see an overall upward trend for Q3 2017/18- a stronger gradient than in 2016/17. This represents focused resources put in to the service to support case work and service reach.

Richmond and Kingston Sendiass Annual Report 2017/18



Summary sheet 2017/18 families worked with (see breakdown data for number of contact)

2017/18	SENDIASS	Benefits	IS	FIS	Total	check
Q1						
April	62	23	39	29	153	
May	73	39	40	31	183	
June	70	32	48	27	177	
Total	205	94	127	87	513	
Q2						
July	53	36	35	16	140	TC resigned July 18
August	25	25	18	3	71	FIS redundant August 18 following service redesign by commissioning,, summer holidays
September	53	21	27	NA	101	
Total	131	82	80	19	302	
Q3						
October	58	35	33		126	New TC recruited and left after a few weeks in post
November	60	22	32		114	
December	51	15	17		83	Additional sendiass to support case work in absence of TC
Total	169	72	82		323	
Q4						Management support through area manager
January	64	25	22		111	
February	59	34	24		117	
March	79	27	35		141	
Total	202	86	81		369	



Comparing the same quarter across two years we can begin to see an overall upward trend for Q3 2017/18- a stronger gradient than in 2016/17. This represents focused resources put in to the service to support case work and service reach.

Richmond and Kingston Sendiass



Summary sheet (contract extension 2018/19): No. of families reached

RICHMOND

2018/19	SENDIASS	Benefits	Total	COMMENTS FOR QUARTER
June	30	19		June numbers are not added to totals. So totals are in reference to a Q2.
July	21	32	53	
August	10	26	36	
September	37	24	61	
Total	68	82	150	

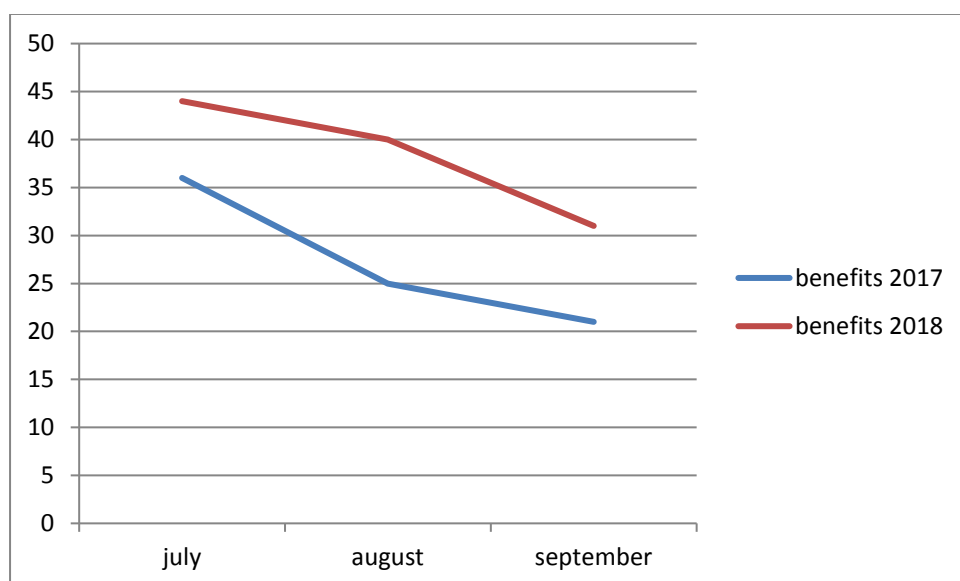
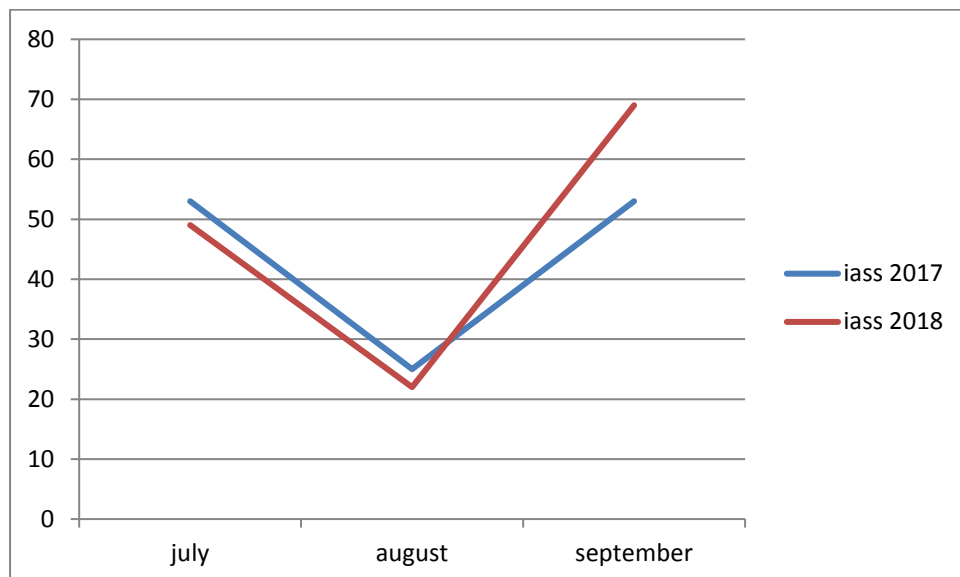
KINGSTON

2018/19	SENDIASS	Benefits	Total	COMMENTS FOR QUARTER
June	36	11		June numbers are not added to totals. So totals are in reference to a Q2.
July	28	12	40	
August	12	14	26	
September	32	7	39	
Total	72	33	105	

RICHMOND/ KINGSTON **TOTAL FAMILY REACH**

2018/19	SENDIASS	Benefits	Total
June	66	30	
July	49	44	93
August	22	40	62
September	69	31	100
Total	140	115	255

Analysis compared to same period last year



- Both the charts for IASS and Benefits follow the same pattern for 2017 and 2018.
- The sharper rise with SENDIASS for 2018 for one part saw the additional resource of the new coordinator (for a short period we kept the previously instigated back filling).
- Increased benefits level due to additional work with me too and co providing advice sessions for their clients once a month on a Friday.

Richmond and Kingston Sendiass



Summary sheet (contract extension 2018/19): No. of families reached

RICHMOND

2018/19	SENDIASS	Benefits	Total	COMMENTS FOR QUARTER
June	30	19		June numbers are not added to totals. So totals are in reference to a Q2.
July	21	32	53	
August	10	26	36	
September	37	24	61	
Total	68	82	150	

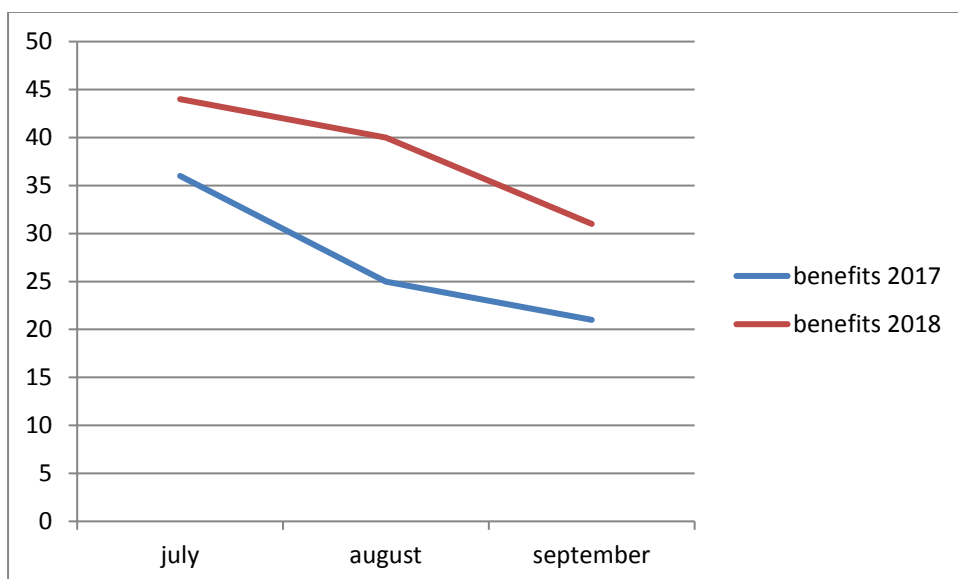
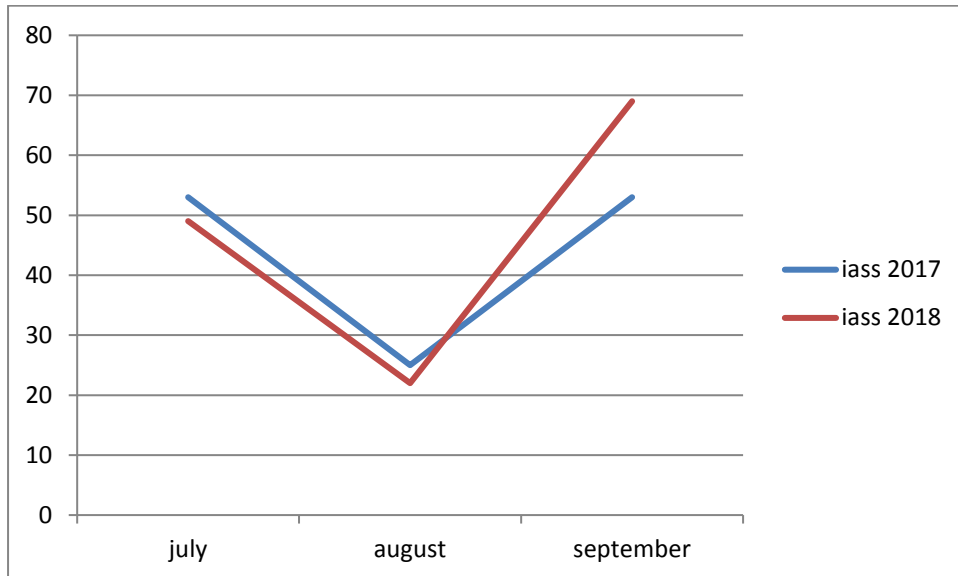
KINGSTON

2018/19	SENDIASS	Benefits	Total	COMMENTS FOR QUARTER
June	36	11		June numbers are not added to totals. So totals are in reference to a Q2.
July	28	12	40	
August	12	14	26	
September	32	7	39	
Total	72	33	105	

RICHMOND/ KINGSTON **TOTAL FAMILY REACH**

2018/19	SENDIASS	Benefits	Total
June	66	30	
July	49	44	93
August	22	40	62
September	69	31	100
Total	140	115	255

Analysis compared to same period last year



- Both the charts for IASS and Benefits follow the same pattern for 2017 and 2018.
- The sharper rise with SENDIASS for 2018 for one part saw the additional resource of the new coordinator (for a short period we kept the previously instigated back filling).
- Increased benefits level due to additional work with me too and co providing advice sessions for their clients once a month on a Friday.



Richmond and Kingston Sendiass

Summary sheet (contract extension 2018/19): No. of families reached

RICHMOND

2018/19	SENDIASS	Benefits	Total For Month	COMMENTS FOR QUARTER
Oct	31	33	64	'Actual Reach' Total refers to the number of total families reached in that period (counting them only once) as some families will be repeated across months.
Nov	18	32	50	
Dec	29	6	35	
'Actual Reach' Total	60	48	101	

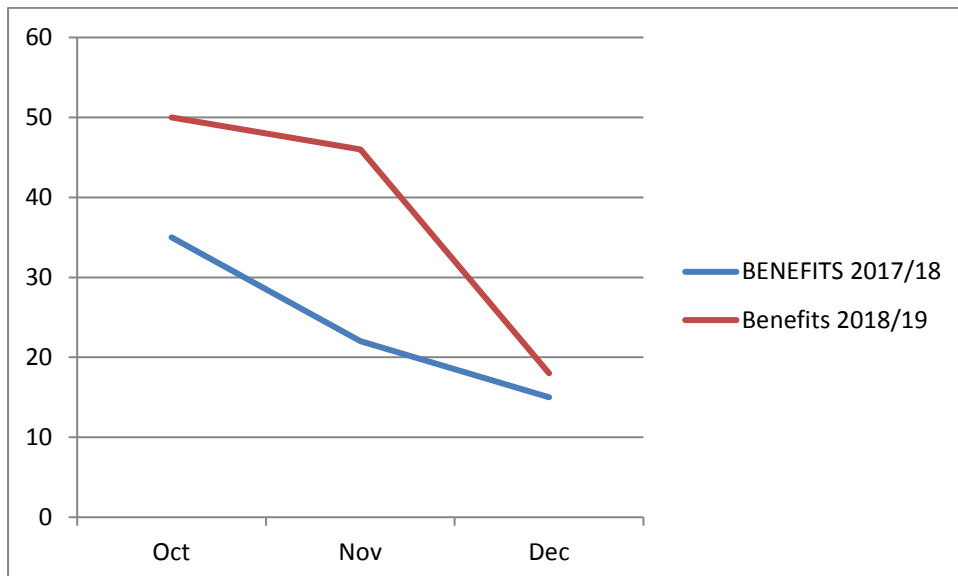
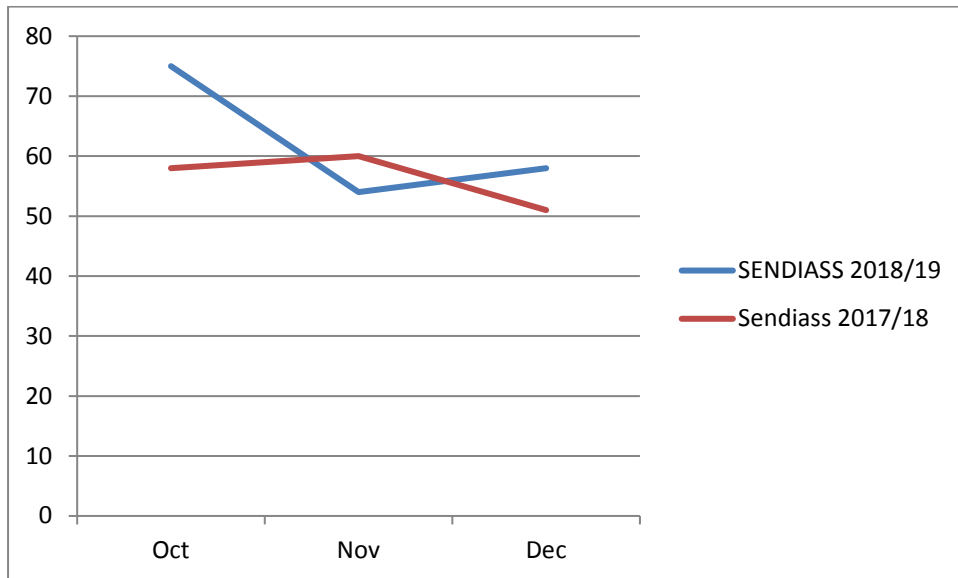
KINGSTON

2018/19	SENDIASS	Benefits	Total For Month	COMMENTS FOR QUARTER
Oct	44	17	61	'Actual Reach' Total refers to the number of total families reached in that period (counting them only once) as some families will be repeated across months.
Nov	36	14	50	
Dec	29	12	41	
'Actual Reach' Total	70	31	92	

RICHMOND/ KINGSTON **TOTAL FAMILY REACH**

2018/19	SENDIASS	Benefits	Total For Month
Oct	75	50	125
Nov	54	46	100
Dec	58	18	76
'Actual Reach' Total	130	79	193

Analysis compared to same period last year





Richmond and Kingston Sendiass

Summary sheet (contract extension 2018/19): Jan to March 2019

RICHMOND

2018/19	SENDIASS	Benefits	Total For Month	COMMENTS FOR QUARTER
Jan	28	13	41	'Actual Reach' Total refers to the number of total families reached in that period (counting them only once) as some families will be repeated across months.
Feb	22	18	40	
Mar	37	14	51	
'Actual Reach' Total	60	29	89	

KINGSTON

2018/19	SENDIASS	Benefits	Total For Month	COMMENTS FOR QUARTER
Jan	38	12	50	'Actual Reach' Total refers to the number of total families reached in that period (counting them only once) as some families will be repeated across months.
Feb	32	19	51	
Mar	43	14	57	
'Actual Reach' Total	64	31	95	

RICHMOND/ KINGSTON **TOTAL FAMILY REACH**

2018/19	SENDIASS	Benefits	Total For Month
Jan	66	25	91
Feb	54	37	91
Mar	80	28	98
'Actual Reach' Total	124	60	184