



## Dates and times for parents and their children to visit (open days/evenings)

### ■ Bridge Academy

**Tuesday 19 September 2006**  
from 7.00pm (Doors open at 6.30pm)  
**Wednesday 20 September 2006**  
from 5.30pm (Doors open at 5.00pm) at  
the Ocean, 270 Mare Street, E8 1HE

### ■ Cardinal Pole School

**Tuesday 26 September 2006**  
from 9.15am – 10.30am at the Annexe, Victoria Park Road, E9 7HD  
**Wednesday 27 September 2006**  
from 9.15am – 10.30am at the Annexe, Victoria Park Road, E9 7HD  
**Thursday 28 September 2006**  
from 9.15am – 10.30am at the Annexe, Victoria Park Road, E9 7HD  
**Thursday 5 October 2006**  
from 6.00pm – 8.00pm at Kenworthy Road, E9 5RB

### ■ Clapton Girls' Technology College

**Wednesday 13 September 2006** from 9.15 – 10.45am  
**Friday 15 September 2006** from 9.15 – 10.45am  
**Thursday 21 September 2006 – Open Evening** 4.30 – 7.00pm  
**Tuesday 26 September 2006** from 9.15 – 10.45am  
**Friday 29 September 2006** from 9.15 – 10.45am  
**Wednesday 4 October 2006 – Open Evening** 4.30 – 7.00pm  
**Thursday 5 October 2006** 9.15 – 10.45am  
Please contact the school if you need an alternative time of day

### ■ Hackney Free and Parochial CE School

**OPEN DAYS** Monday 18 September, 2006 9.00am  
Tuesday 19 September 2006 9.00am  
**OPEN EVENINGS**  
**Wednesday 20 September 2006** 3.30pm – 5.30pm  
**Thursday 21 September 2006** 3.30pm – 5.30pm

### ■ Haggerston School for Girls

**Monday 18, Tuesday 19, Monday 25 September 2006**  
9.00am – 10.00am  
**Thursday 28 September 2006** 5.45pm – 7.30pm  
The Headteacher's talk is at 6pm and at 7.30pm

### ■ Mossbourne Community Academy

Prospective parents can visit by prior appointment only.  
Appointments can be made to visit the school during the week of  
Monday 26 September 2006 to Friday 30 September 2006, where small  
groups of parents will be escorted by members of the teaching staff  
who will be able to answer any questions. To obtain an appointment  
please call 020 8525 5204 from 6th September 2006 onwards

### ■ Our Lady's Convent RC High School

**Thursday 21 September 2006** 6.00 – 7.30pm  
The Headteacher's talk is at 7.30pm  
**Tuesday 26 September 2006** 6.00 – 7.30pm  
The Headteacher's talk is at 7.30pm

### ■ Petchey Academy

**Monday 18 September 2006** 5.30 – 6.30pm or 7.30 – 8.30pm  
**Tuesday 19 September 2006** 5.30 – 6.30pm or 7.30 – 8.30pm  
The meeting venue to be arranged. Please contact by email:  
mail@petcheyacademy.org.uk or Telephone: 020 7254 8722

### ■ Stoke Newington School Media Arts College

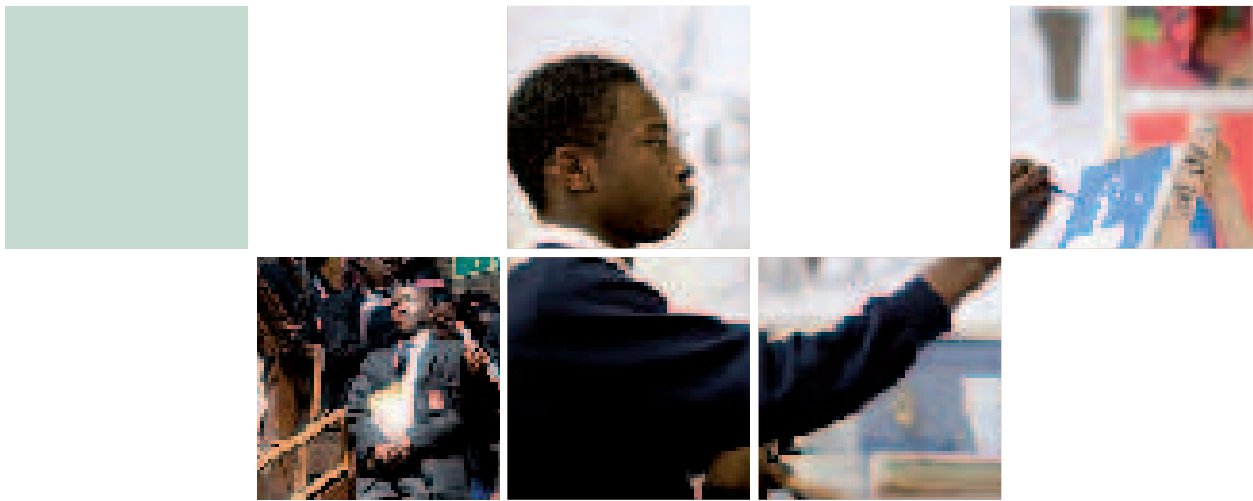
**Monday 18 September 2006** 5.00pm – 7.30pm  
**Thursday 21 September 2006** 5.00pm – 7.30pm

### ■ Yesodey Hatorah School for Girls

Please contact the school for further information  
tel 020 8802 8412

## Places offered for September 2006 at Hackney community oversubscribed Schools

School	Clapton Girls	Haggerston	Stoke Newington
Pupils with statements of special educational needs	2	3	10
1. Children looked after by a local education authority	2	0	1
2. Children whose acute medical or social need justifies a place at that particular school	0	1	5
3. Children with brothers and sisters at the school at the time of the proposed admission	43	25	75
4. Applicants living nearest to the main entrance of the school up to the distance of	–	–	149
	all pupils who required a place were allocated a place	all pupils who required a place were allocated a place	up to the distance of 993 metres

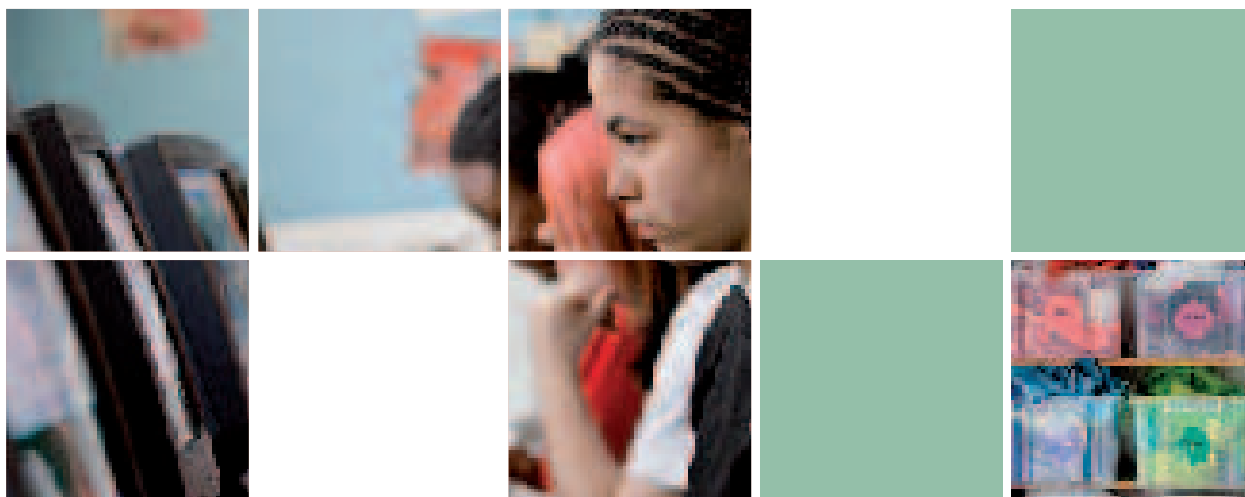


## Number of places offered at Hackney Schools in September 2006

The information below should help you to establish if you are likely to be eligible for a place at a particular school. For example, for the religious schools if a majority of the places are offered to children who meet the religious criterion, this indicates that unless you meet that criterion you are unlikely to be offered a place.

Our Lady's Convent RC School	
Places offered for September 2006	
Criteria priorities	Number of places offered
Pupils with statements of special educational needs	1
1. Catholic "looked After" Children	0
2. Places are given to children from practising Roman Catholic Families, who seek a religious education and training for their daughter, and who make Our Lady's Convent School their 1st preference school. The application should be supported by a baptismal certificate and a reference from a Priest in the parish where they normally worship	119
Evidence is sought that the parents or guardians and the child have a commitment to religious practice and that they are supportive of the aims, values and expectations of the school as outlined in the school's mission statement. The application form and Priest's reference will be used to determine this	0
3. Consideration is given to sisters of siblings already in Our Lady's Convent where there is evidence that the family is willing to support the ethos, aims and procedures of the school.	0
4. Other 'Looked After' Children.	0
5. Consideration is given to children from Christian families where there is evidence that the family seeks a Christian education for their child and where the application is supported by a baptismal certificate and a reference from a Minister of religion in the Church where they normally worship	0
<b>Total</b>	<b>120</b>

Hackney Free and Parochial School	
Places offered for September 2006	
Criteria priorities	Number of places offered
Pupils with statements of special educational needs	6
Pupils looked after by a local authority	2
Pupils with proved medical need	0
1. Students who attend a Church of England church or whose parents/carers do so	28
2. Students who are, or whose parents/carers are, regular worshippers at other churches, or chapels, or other Christian denominations as defined by 'Churches together in Britain and Ireland'; or members of the Evangelical Alliance	69
3. Students who are, or whose parents/carers are, practising members of another world faith	20
4. A brother or sister at the school	25
5. Students living nearest the school as measured in a straight line on a map or using a GIS mapping system	0
<b>Total</b>	<b>150</b>



## Cardinal Pole RC School

Places offered for September 2006

Criteria priorities	Number of places offered			
Pupils with statements of special educational needs	8			
	BAND: 1	2	3	4
1. Catholic and non-Catholic children in public care pursuant to S31 & S38 of Children's Act 1989; who have named Cardinal Pole School as their first preference on The Learning Trust secondary transfer application form	0	0	1	0
2. Baptised children from practising Roman Catholic families whose applications are supported by the Parish Priest. Applicants should note that places will be offered to those families who name Cardinal Pole RC School as their first preference on The Learning Trust secondary transfer application form	19	11	22	18
3. Baptised children from Roman Catholic families who can show no evidence of current religious practice	2	4	2	5
4. Consideration is given to Christian and non-Christian families where there is evidence that a family seeks a Catholic education for their child and where the application is supported by a reference from a recognised Minister of Religion. Applicants should note that places will be offered to those families who name Cardinal Pole RC School as their first preference on The Learning Trust secondary transfer application form	34	38	18	14
5. All other applicants should note that places will be offered to those families who name Cardinal Pole RC School as their first preference on The Learning Trust secondary transfer application form	0	0	0	0
<b>Total</b>	<b>180</b>			

## Mossbourne Community Academy

Places offered for September 2006

Criteria priorities	Number of places offered			
Pupils with statements of special educational needs	9			
	BAND: A	B	C	D
	43	43	43	42
1. Children who are in care or interim care of a local education authority	0	2	2	1
2. Children with brothers and sisters on roll at the time of admission who live inside the local catchment or outside the local catchment	6	9	6	5
3. Children whose acute medical or social need justifies a place at the academy	0	0	0	0
4. Pupils who live inside the local catchment area as defined by living at an address within 1,000 metres of the school	20	15	18	20
5. Pupils who live outside the local catchment area as defined above (for those living furthest from the alternative non-denominational mixed schools in Hackney)	9	10	14	13
<b>Total</b>	<b>180</b>			

## The Petchey Academy

Places offered for September 2006

Criteria priorities	Number of places offered				
Pupils with statements of special educational needs	10				
	BAND: A	B	C	D	E
	34	34	34	34	34
1. Children who are in care or interim care of a local education authority	0	0	0	0	0
2. Living nearest to the school	1544m	1352m	1296m	1000m	1210m
<b>Total</b>	<b>180</b>				