

Children's Social Care Structure

**Executive Director of
Children's Social Care and Education**
Vicky Buchanan

Head of Children's Social Care
Laura Knights

EDT, MASH and Locality South

**Service Manager
Julie Bucknall**

MASH Team

St Peter's House
Tel: 0151 934 4013/4481

Team Manager x 2

Social Worker x 5

**Customer Access Officers
x 5**

FSW/Researcher x 1

**Business Support Assistant
X 2**

Emergency Duty Team

Linacre Lane
Tel: 0151 934 6025

Team Manager x1

**Social Worker
X 5**

Business Support x1

Admin Officer

EDT, MASH and Locality South

Service Manager
Kieley Blackburn

South Team 6
Magdalen House
Tel: 0151 934 2511

Team Manager

Social Worker
x5

South Team 7
Magdalen House
Tel: 0151 934 2511

Team Manager

Social Worker
x6

South Team 8
Magdalen House
Tel: 0151 934 2511

Team Manager

Social Worker
x7

South Team 9
Magdalen House
Tel: 0151 934 2511

Team Manager

Social Worker
x4

Business Support Officer
x1

Business Support Assistant
x3

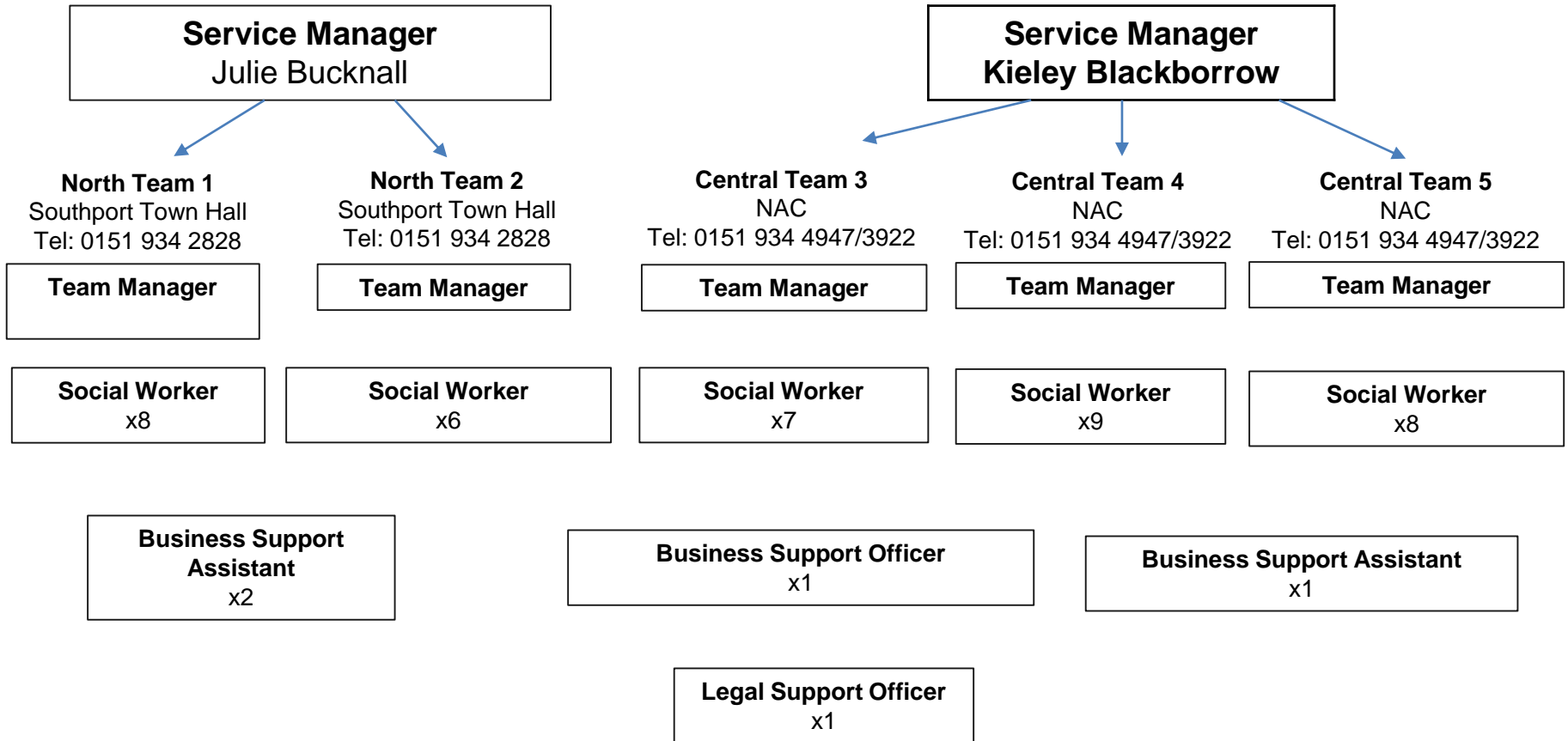
Locality Services North & Central

**Service Manager
Julie Bucknall**

**Team 10
Southport
Team Manager**

Social Worker x6

Locality Services North & Central



Locality Services

**Service Manager
Kieley Blackborrow**

CAS
Melrose House
Tel: 0151 934 6025

Team Manager

CAS Practitioner
x9

**Business Support
Assistant**

Handyman

Corporate Parenting Service

**Service Manager
Virinder Crawford**

Team 1
Magdalen House
Tel: 0151 934 3843

Team Manager

Social Worker
x7

FSW
x2

Team 2
Magdalen House
Tel: 0151 934 3843

Team Manager

Social Worker
x6

FSW

Team 3
Magdalen House
Tel: 0151 934 3843

Team Manager

Social Worker
x6

FSW

Leaving Care Team
Magdalen House
Tel: 0151 934 3843

Team Manager

PA
x10

**Employability/
Connexions**

**Participation
Officer**

Business Support Officer

**Business Support
Assistant**
x2

Finance Officer

Corporate Parenting Service

**Service Manager
(interim)**
Lisa Cummings

**Fostering Team
Magdalen House
Tel: 0151 934 4308**

Lead Practitioner

Team Manager

**Fostering & Adoption
Compliance Officer**

**Training and Development
Officer
Recruitment & Support Officer**

Assessing Social Workers
X6
1x vacancy
Placement Support Workers
x2

Supervising/Support Social Workers
X6
1x vacancy
Placement Support Workers
x2

Business & Support Officer

Business Support
x5

Corporate Parenting Service

Service Manager
Virinder Crawford

Therapeutic Support Team
Ainsdale Hope Centre
Tel: 0151 934 3854

Team Manager

Social Worker
x4

Safeguarding Children Unit

Service Manager
Nicola Horn

28/30 Sefton Street, Litherland L21 7LB
Tel: 0151 934 3114

