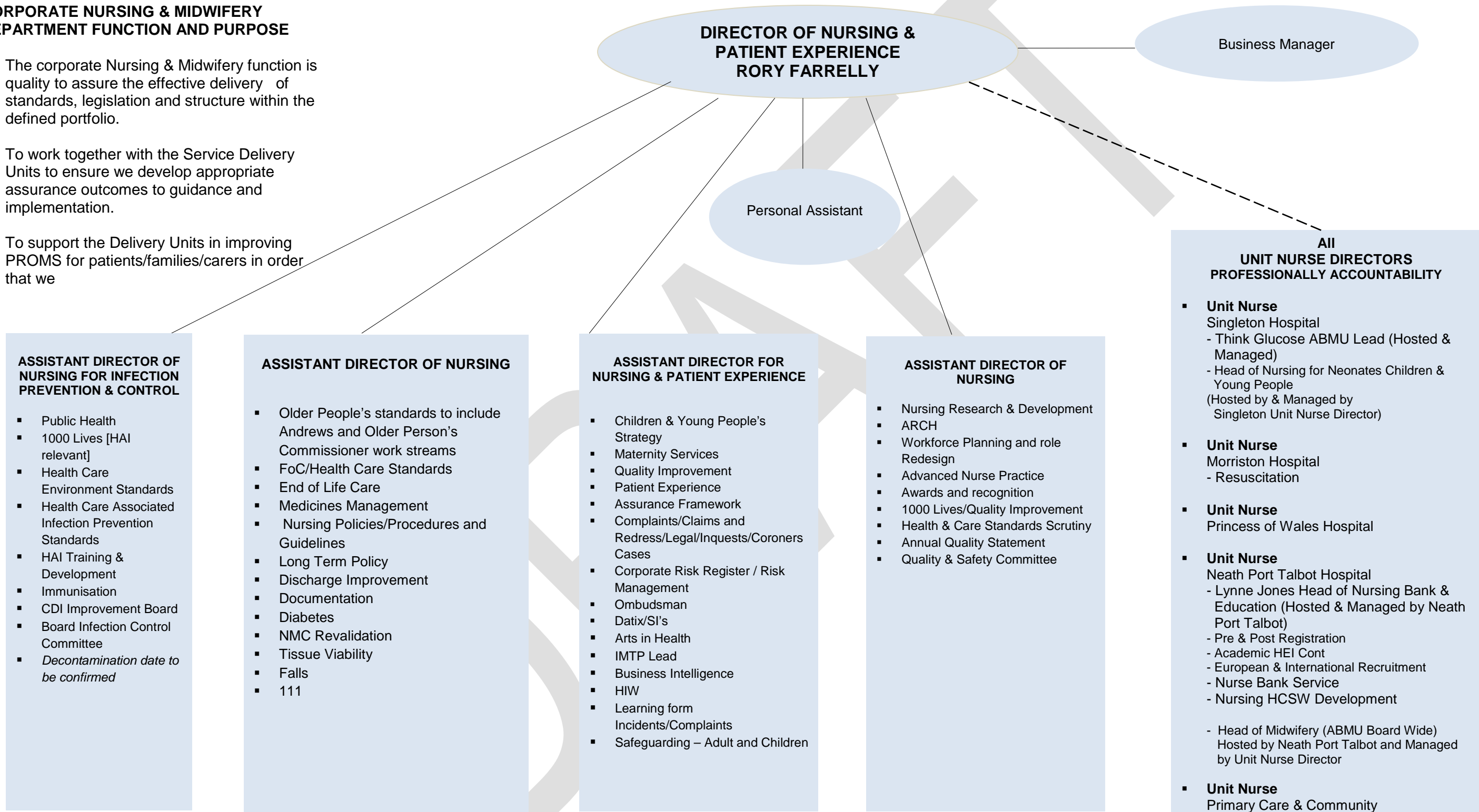


CORPORATE NURSING & MIDWIFERY STRUCTURE

CORPORATE NURSING & MIDWIFERY DEPARTMENT FUNCTION AND PURPOSE

- The corporate Nursing & Midwifery function is quality to assure the effective delivery of standards, legislation and structure within the defined portfolio.
- To work together with the Service Delivery Units to ensure we develop appropriate assurance outcomes to guidance and implementation.
- To support the Delivery Units in improving PROMS for patients/families/carers in order that we



ASSISTANT DIRECTOR OF NURSING FOR INFECTION PREVENTION & CONTROL

- Public Health
- 1000 Lives [HAI relevant]
- Health Care Environment Standards
- Health Care Associated Infection Prevention Standards
- HAI Training & Development
- Immunisation
- CDI Improvement Board
- Board Infection Control Committee
- *Decontamination date to be confirmed*

ASSISTANT DIRECTOR OF NURSING

- Older People's standards to include Andrews and Older Person's Commissioner work streams
- FoC/Health Care Standards
- End of Life Care
- Medicines Management
- Nursing Policies/Procedures and Guidelines
- Long Term Policy
- Discharge Improvement
- Documentation
- Diabetes
- NMC Revalidation
- Tissue Viability
- Falls
- 111

ASSISTANT DIRECTOR FOR NURSING & PATIENT EXPERIENCE

- Children & Young People's Strategy
- Maternity Services
- Quality Improvement
- Patient Experience
- Assurance Framework
- Complaints/Claims and Redress/Legal/Inquests/Coroners Cases
- Corporate Risk Register / Risk Management
- Ombudsman
- Datix/SI's
- Arts in Health
- IMTP Lead
- Business Intelligence
- HIW
- Learning form Incidents/Complaints
- Safeguarding – Adult and Children

ASSISTANT DIRECTOR OF NURSING

- Nursing Research & Development
- ARCH
- Workforce Planning and role Redesign
- Advanced Nurse Practice
- Awards and recognition
- 1000 Lives/Quality Improvement
- Health & Care Standards Scrutiny
- Annual Quality Statement
- Quality & Safety Committee

All UNIT NURSE DIRECTORS PROFESSIONALLY ACCOUNTABILITY

- **Unit Nurse** Singleton Hospital
 - Think Glucose ABMU Lead (Hosted & Managed)
 - Head of Nursing for Neonates Children & Young People (Hosted by & Managed by Singleton Unit Nurse Director)
- **Unit Nurse** Morriston Hospital
 - Resuscitation
- **Unit Nurse** Princess of Wales Hospital
- **Unit Nurse** Neath Port Talbot Hospital
 - Lynne Jones Head of Nursing Bank & Education (Hosted & Managed by Neath Port Talbot)
 - Pre & Post Registration
 - Academic HEI Cont
 - European & International Recruitment
 - Nurse Bank Service
 - Nursing HCSW Development
 - Head of Midwifery (ABMU Board Wide) Hosted by Neath Port Talbot and Managed by Unit Nurse Director
- **Unit Nurse** Primary Care & Community Services(ABMU Lead)
 - Operational Management of Long Term Care Lead
- **Unit Nurse** Mental Health & Learning Disabilities Learning Disability Pathway Monitoring

Operational & Professional Accountability _____
 Professional Accountability - - - - -