

SurfStats Software

Statistics Report

of

Travelinfo

1 Jun 2013, 11:14 AM

Hour of Day Activity

www.reading-travelinfo.co.uk

This section shows the activity for each hour of the day for the report period. For example : if there are 2 days in the report period and both of them include a log entry for 8am, then the value shown is the sum of the hits for for both days. Values shown do not include failed requests.



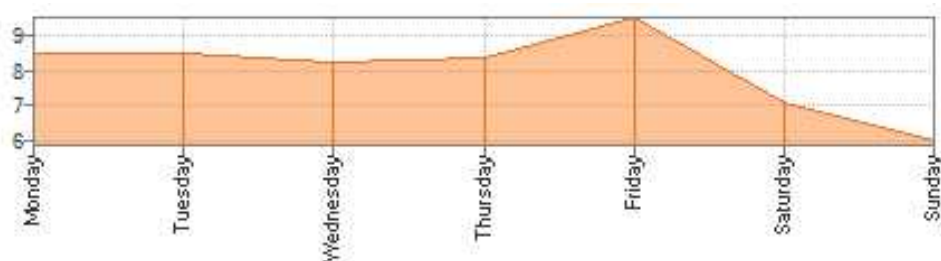
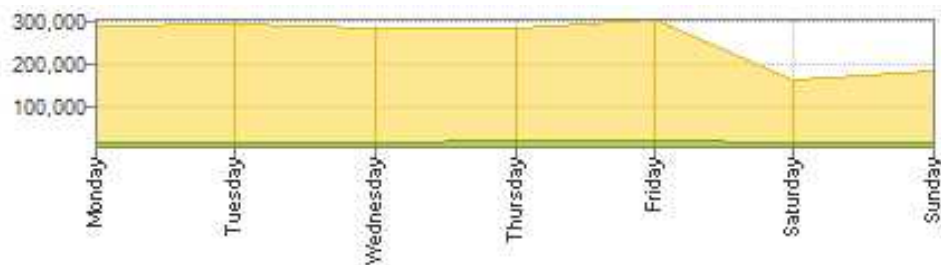
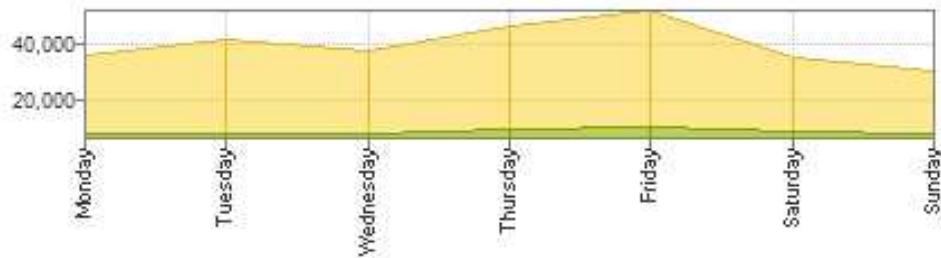
	Humans	Spiders	Humans	Spiders	Bandwidth
Midnight to 1am	4888	2562	121608	9624	1,180.73MB
1am to 2am	3754	2414	9757	5737	437.85MB
2am to 3am	2983	2487	9361	5128	358.02MB
3am to 4am	3348	2417	7287	4068	315.36MB

4am to 5am	3285	2449	9471	5281	416.57MB
5am to 6am	4697	2434	17156	5434	612.34MB
6am to 7am	7220	2756	38138	5800	1,083.18MB
7am to 8am	11062	2518	90229	4310	2,015.38MB
8am to 9am	13325	2580	141872	4153	3,052.23MB
9am to 10am	16210	2570	159005	4877	3,593.03MB
10am to 11am	18235	2679	172166	4625	4,105.80MB
11am to 12pm	19394	2494	123149	4182	3,782.37MB
12pm to 1pm	17874	2621	124367	4901	3,805.31MB
1pm to 2pm	17041	2605	103922	5283	3,521.79MB
2pm to 3pm	17613	2631	119446	4937	3,572.36MB
3pm to 4pm	18643	2592	114381	6014	3,787.23MB
4pm to 5pm	18097	2397	100371	4278	3,534.32MB
5pm to 6pm	17204	2708	85711	5375	3,251.32MB
6pm to 7pm	13642	2775	63357	5326	2,885.17MB
7pm to 8pm	11839	2788	49309	5496	2,336.58MB
8pm to 9pm	11284	2459	45938	5746	2,232.68MB
9pm to 10pm	10654	2276	39679	3670	1,968.94MB
10pm to 11pm	8674	2479	34292	4574	1,779.49MB
11pm to Midnight	6799	2389	21429	4075	1,151.24MB
Total	277765	61080	1801401	122894	54,779.28MB
Maximum	19394	2788	172166	9624	4,105.80MB
Minimum	2983	2276	7287	3670	315.36MB
Average	11574	2545	75058	5121	2,282.47MB

Day of Week Activity

www.reading-travelinfo.co.uk

This section shows the activity for each day of the week for the report period. For example if there are 2 Sundays in the report period, then the value shown for Sunday is the sum of all hits for both Sundays. Values shown do not include failed requests.



	Humans	Spiders	Humans	Spiders	Bandwidth
Monday	35856	8094	289044	16511	8,265.74MB
Tuesday	41368	7979	291412	16650	8,303.25MB
Wednesday	37579	8088	281928	17077	8,036.98MB
Thursday	46150	9421	284887	19421	8,137.68MB
Friday	51501	10062	303766	20063	9,271.76MB

Saturday	34823	9116	164756	16045	6,901.97MB
Sunday	30488	8320	185608	17127	5,861.89MB
Total	277765	63625	1801401	128014	54,779.28MB
Maximum	51501	10062	303766	20063	9,271.76MB
Minimum	30488	7979	164756	16045	5,861.89MB
Average	39681	9089	257343	18288	7,825.61MB

Day of Month Activity

www.reading-travelinfo.co.uk

This section shows the activity for each day of the month for the report period. For example if there are 2 months which both contain an entry for the 5th day of the month in the report period, then the value shown is the sum of all hits for both of these days. Values shown do not include failed requests.



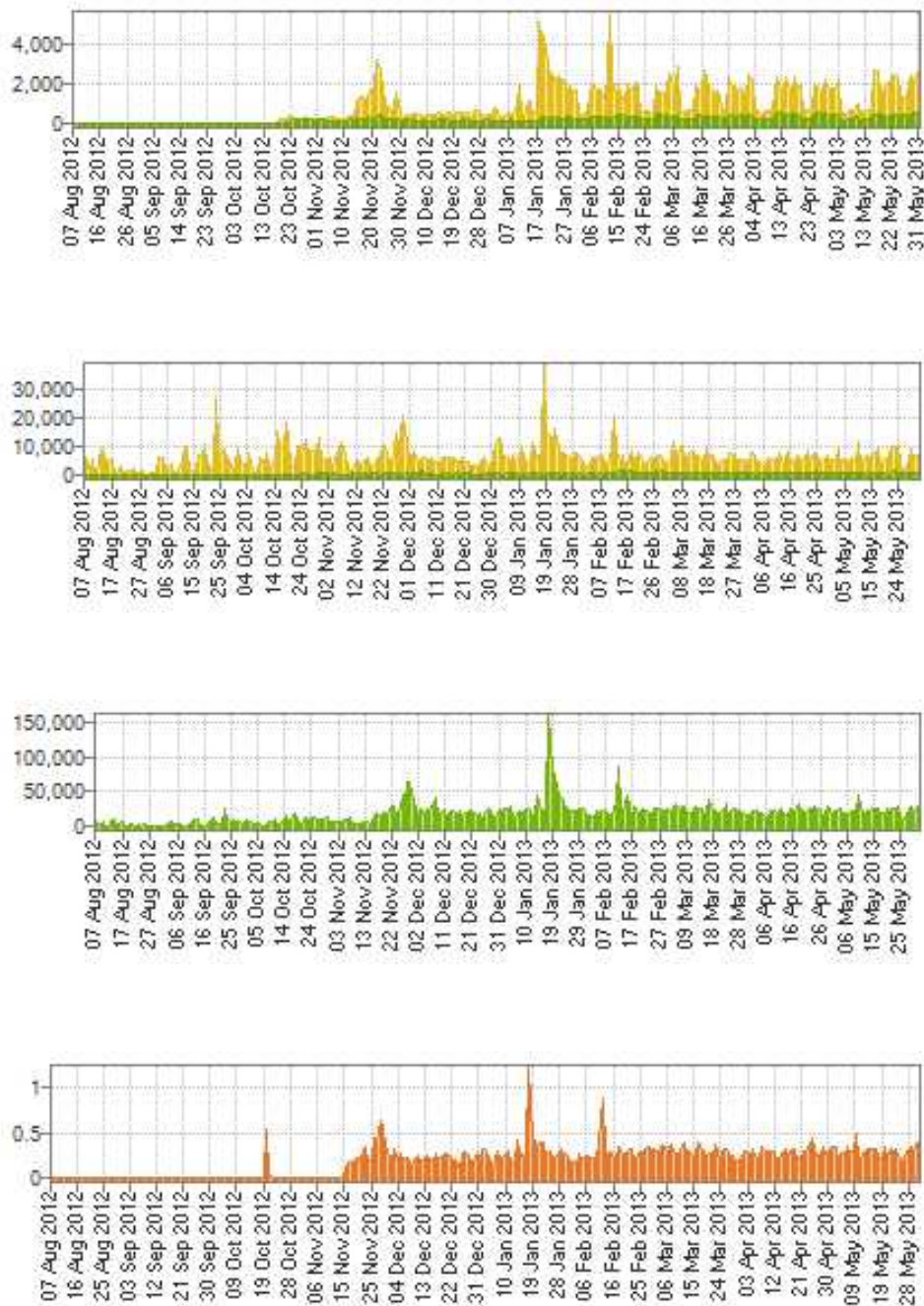
	Humans	Spiders	Humans	Spiders	Bandwidth
01	6956	2415	52206	4260	1,534.38MB
02	7382	2186	49818	3442	1,600.65MB
03	7785	1839	56441	3780	1,609.20MB
04	4717	1616	41862	3323	1,459.73MB

05	6460	1562	57234	4638	1,592.01MB
06	6063	1378	42196	4167	1,330.58MB
07	6109	1439	50762	4381	1,581.38MB
08	7064	1580	53093	3397	1,641.36MB
09	4686	1601	42488	3254	1,380.45MB
10	5068	1430	50715	3500	1,688.45MB
11	8443	1323	52659	3346	1,716.31MB
12	10518	1600	69387	3367	2,102.92MB
13	6464	1660	61482	3528	1,424.71MB
14	7985	2033	59552	4381	1,710.64MB
15	9543	2072	65272	4283	1,633.62MB
16	9755	2478	51301	4081	1,594.31MB
17	10823	2285	65801	4172	1,863.89MB
18	15022	2240	96970	4644	2,754.03MB
19	13425	2450	70090	4432	1,901.92MB
20	14335	2216	57629	3617	2,486.87MB
21	11916	1985	53107	4156	1,867.41MB
22	13146	2021	70641	3887	2,082.49MB
23	10471	2132	82399	5783	2,072.05MB
24	8832	1843	56476	3355	1,687.75MB
25	8972	2417	59394	4372	1,745.51MB
26	9968	2431	62252	4863	2,013.33MB
27	9196	2442	57756	4043	1,907.10MB
28	10902	2656	62715	4383	2,260.75MB
29	10642	2182	64455	4121	1,979.26MB
30	8707	2033	53944	3413	1,509.72MB
31	6410	1535	31304	2525	1,046.50MB
Total	277765	70169	1801401	141181	54,779.28MB
Maximum	15022	2656	96970	5783	2,754.03MB
Minimum	4686	1323	31304	2525	1,046.50MB
Average	8960	2264	58110	4554	1,767.07MB

Detail Daily Activity

www.reading-travelinfo.co.uk

This section shows the activity for each day of each month for the requested report period. For example if there are 2 months selected which contains data, then the values shown are 2 values for each day, for instance one for Oct 2 and one for Nov 2. Values shown do not include failed requests.



	Humans	Spiders	Humans	Spiders	Bandwidth
Tue, August 7 2012	2	0	29	0	0.00MB
Wed, August 8 2012	3	0	5891	0	0.00MB
Thu, August 9 2012	1	0	552	0	0.00MB
Fri, August 10 2012	7	0	5496	0	0.00MB

Sat, August 11 2012	3	0	464	0	0.00MB
Sun, August 12 2012	6	0	422	0	0.00MB
Mon, August 13 2012	15	0	8997	0	0.00MB
Tue, August 14 2012	20	0	8291	0	0.00MB
Wed, August 15 2012	26	0	4379	0	0.00MB
Thu, August 16 2012	26	0	4219	0	0.00MB
Fri, August 17 2012	47	0	5473	0	0.00MB
Sat, August 18 2012	9	0	625	0	0.00MB
Sun, August 19 2012	2	0	13	0	0.00MB
Mon, August 20 2012	15	0	2956	0	0.00MB
Tue, August 21 2012	16	0	1222	0	0.00MB
Wed, August 22 2012	18	0	664	0	0.00MB
Thu, August 23 2012	12	0	1743	0	0.00MB
Fri, August 24 2012	10	0	1535	0	0.00MB
Sat, August 25 2012	7	0	1908	0	0.00MB
Sun, August 26 2012	3	0	262	0	0.00MB
Mon, August 27 2012	2	0	627	0	0.00MB
Tue, August 28 2012	9	0	1197	0	0.00MB
Wed, August 29 2012	9	0	378	0	0.00MB
Thu, August 30 2012	5	0	158	0	0.00MB
Fri, August 31 2012	11	0	601	0	0.00MB
Sat, September 1 2012	4	0	510	0	0.00MB
Sun, September 2 2012	4	0	308	0	0.00MB
Mon, September 3 2012	18	0	5926	0	0.00MB
Tue, September 4 2012	20	0	6275	0	0.00MB
Wed, September 5 2012	16	0	2478	0	0.00MB
Thu, September 6 2012	27	0	2569	0	0.00MB
Fri, September 7 2012	18	0	4092	0	0.00MB
Sat, September 8 2012	4	0	338	0	0.00MB
Sun, September 9 2012	4	0	596	0	0.00MB
Mon, September 10 2012	16	0	1511	0	0.00MB
Tue, September 11 2012	16	0	5198	0	0.00MB
Wed, September 12 2012	27	0	10012	0	0.00MB
Thu, September 13 2012	26	0	8836	0	0.00MB
Fri, September 14 2012	19	0	1855	0	0.00MB
Sat, September 15 2012	6	0	932	0	0.00MB
Sun, September 16 2012	1	0	432	0	0.00MB
Mon, September 17 2012	25	0	7057	0	0.00MB
Tue, September 18 2012	13	0	6271	0	0.00MB
Wed, September 19 2012	10	0	11045	0	0.00MB
Thu, September 20 2012	20	0	4284	0	0.00MB
Fri, September 21 2012	26	0	3575	0	0.00MB
Sat, September 22 2012	4	0	709	0	0.00MB
Sun, September 23 2012	15	0	26623	0	0.00MB
Mon, September 24 2012	29	0	10042	0	0.00MB
Tue, September 25 2012	30	0	6544	0	0.00MB
Wed, September 26 2012	43	0	8950	0	0.00MB
Thu, September 27 2012	27	0	6208	0	0.00MB
Fri, September 28 2012	15	0	5040	0	0.00MB

Sat, September 29 2012	13	0	2488	0	0.00MB
Sun, September 30 2012	13	0	2858	0	0.00MB
Mon, October 1 2012	34	0	8845	0	0.00MB
Tue, October 2 2012	23	0	5109	0	0.00MB
Wed, October 3 2012	23	0	4132	0	0.00MB
Thu, October 4 2012	19	0	2005	0	0.00MB
Fri, October 5 2012	26	0	7364	0	0.00MB
Sat, October 6 2012	1	0	867	0	0.00MB
Sun, October 7 2012	5	0	888	0	0.00MB
Mon, October 8 2012	10	0	1042	0	0.00MB
Tue, October 9 2012	42	0	5994	0	0.00MB
Wed, October 10 2012	29	0	4079	0	0.00MB
Thu, October 11 2012	27	0	7861	0	0.00MB
Fri, October 12 2012	18	0	3853	0	0.00MB
Sat, October 13 2012	2	0	2930	0	0.00MB
Sun, October 14 2012	6	0	5100	0	0.00MB
Mon, October 15 2012	36	0	15404	0	0.00MB
Tue, October 16 2012	30	0	9678	0	0.00MB
Wed, October 17 2012	26	0	9937	0	0.00MB
Thu, October 18 2012	55	0	18309	0	0.00MB
Fri, October 19 2012	170	18	12626	639	0.00MB
Sat, October 20 2012	236	50	2849	63	523.41MB
Sun, October 21 2012	197	61	2876	106	39.18MB
Mon, October 22 2012	364	52	10169	53	0.00MB
Tue, October 23 2012	304	105	9719	118	0.00MB
Wed, October 24 2012	232	217	5924	397	0.00MB
Thu, October 25 2012	264	228	12379	331	0.00MB
Fri, October 26 2012	216	211	7491	488	0.00MB
Sat, October 27 2012	200	175	8335	331	0.00MB
Sun, October 28 2012	188	309	8072	367	0.00MB
Mon, October 29 2012	245	214	8921	516	0.00MB
Tue, October 30 2012	276	206	13209	545	0.00MB
Wed, October 31 2012	242	164	5664	474	0.00MB
Thu, November 1 2012	218	256	5681	472	0.00MB
Fri, November 2 2012	205	268	5668	469	0.00MB
Sat, November 3 2012	175	222	5882	359	0.00MB
Sun, November 4 2012	175	255	2857	391	0.00MB
Mon, November 5 2012	289	119	7499	183	0.00MB
Tue, November 6 2012	326	125	8179	266	0.00MB
Wed, November 7 2012	283	94	11357	200	0.00MB
Thu, November 8 2012	251	87	6542	285	0.00MB
Fri, November 9 2012	272	119	2827	285	0.00MB
Sat, November 10 2012	223	165	1727	311	0.00MB
Sun, November 11 2012	200	137	1250	403	0.00MB
Mon, November 12 2012	331	107	4998	169	0.00MB
Tue, November 13 2012	297	200	4932	461	0.00MB
Wed, November 14 2012	556	120	3806	268	0.00MB
Thu, November 15 2012	925	189	4300	415	0.00MB
Fri, November 16 2012	1368	274	6054	308	106.78MB

Sat, November 17 2012	1391	252	3573	396	175.05MB
Sun, November 18 2012	1161	229	2770	456	136.24MB
Mon, November 19 2012	1425	298	4280	532	193.51MB
Tue, November 20 2012	1842	266	6412	230	222.04MB
Wed, November 21 2012	1813	241	5806	370	208.00MB
Thu, November 22 2012	3299	283	10692	509	299.79MB
Fri, November 23 2012	2813	460	8527	723	326.45MB
Sat, November 24 2012	1652	319	3742	476	162.00MB
Sun, November 25 2012	1113	271	3843	465	181.84MB
Mon, November 26 2012	876	181	14544	647	434.73MB
Tue, November 27 2012	579	191	11046	291	373.07MB
Wed, November 28 2012	867	211	14820	677	613.85MB
Thu, November 29 2012	1611	177	20867	291	556.66MB
Fri, November 30 2012	606	161	11517	508	357.42MB
Sat, December 1 2012	379	157	5687	337	225.51MB
Sun, December 2 2012	344	193	5303	403	174.62MB
Mon, December 3 2012	465	192	8143	681	308.69MB
Tue, December 4 2012	394	164	4887	458	177.39MB
Wed, December 5 2012	529	200	5482	1172	268.21MB
Thu, December 6 2012	486	167	6340	1153	217.81MB
Fri, December 7 2012	422	134	5582	343	224.72MB
Sat, December 8 2012	384	139	5376	492	192.33MB
Sun, December 9 2012	284	264	5956	487	144.90MB
Mon, December 10 2012	418	136	4569	174	222.40MB
Tue, December 11 2012	500	140	4751	313	247.80MB
Wed, December 12 2012	439	141	4195	243	180.10MB
Thu, December 13 2012	465	141	5980	408	193.52MB
Fri, December 14 2012	539	218	6215	299	233.87MB
Sat, December 15 2012	477	180	6297	383	222.41MB
Sun, December 16 2012	457	267	5462	303	170.77MB
Mon, December 17 2012	529	145	6179	316	255.97MB
Tue, December 18 2012	411	122	3951	549	199.37MB
Wed, December 19 2012	502	141	5278	213	215.53MB
Thu, December 20 2012	509	135	5835	398	253.90MB
Fri, December 21 2012	526	145	4567	892	253.05MB
Sat, December 22 2012	560	177	4269	262	222.37MB
Sun, December 23 2012	436	189	3281	1161	200.27MB
Mon, December 24 2012	542	147	3807	277	202.01MB
Tue, December 25 2012	226	141	2360	319	85.29MB
Wed, December 26 2012	497	141	4126	694	239.47MB
Thu, December 27 2012	645	151	5271	261	281.71MB
Fri, December 28 2012	517	136	6143	272	245.39MB
Sat, December 29 2012	428	129	3005	538	176.97MB
Sun, December 30 2012	342	145	2098	440	168.39MB
Mon, December 31 2012	481	170	7138	434	262.86MB
Tue, January 1 2013	384	140	11052	554	193.66MB
Wed, January 2 2013	522	123	12693	464	301.93MB
Thu, January 3 2013	770	137	9167	303	278.03MB
Fri, January 4 2013	472	141	5728	282	224.06MB

Sat, January 5 2013	380	167	6228	497	189.89MB
Sun, January 6 2013	335	137	3937	527	125.16MB
Mon, January 7 2013	522	159	7096	1025	277.34MB
Tue, January 8 2013	446	243	5642	410	214.60MB
Wed, January 9 2013	434	113	6104	306	221.36MB
Thu, January 10 2013	1007	120	9157	240	260.60MB
Fri, January 11 2013	2062	157	7831	559	278.72MB
Sat, January 12 2013	396	127	3778	209	180.13MB
Sun, January 13 2013	362	162	3443	507	164.79MB
Mon, January 14 2013	1100	146	11511	454	406.32MB
Tue, January 15 2013	1167	141	7298	399	304.96MB
Wed, January 16 2013	465	143	5539	336	228.37MB
Thu, January 17 2013	628	123	8181	451	299.18MB
Fri, January 18 2013	5152	106	38922	243	1,227.50MB
Sat, January 19 2013	4400	344	14726	406	411.01MB
Sun, January 20 2013	4480	342	13586	915	418.96MB
Mon, January 21 2013	2989	224	10496	421	352.34MB
Tue, January 22 2013	2563	202	15834	455	393.33MB
Wed, January 23 2013	2448	294	10201	910	377.85MB
Thu, January 24 2013	2163	271	5848	340	246.46MB
Fri, January 25 2013	2431	281	8424	494	286.44MB
Sat, January 26 2013	2194	264	6490	383	252.34MB
Sun, January 27 2013	2075	259	6111	268	210.92MB
Mon, January 28 2013	1695	434	5198	679	271.86MB
Tue, January 29 2013	1871	294	7771	975	319.56MB
Wed, January 30 2013	1649	238	7589	304	267.98MB
Thu, January 31 2013	1668	243	6094	438	232.13MB
Fri, February 1 2013	527	178	3615	356	188.88MB
Sat, February 2 2013	496	218	3049	380	179.90MB
Sun, February 3 2013	447	188	2821	584	150.53MB
Mon, February 4 2013	699	194	6204	384	269.48MB
Tue, February 5 2013	1410	310	6453	645	187.28MB
Wed, February 6 2013	1992	305	5755	373	229.29MB
Thu, February 7 2013	1639	284	7190	610	241.60MB
Fri, February 8 2013	1744	311	6473	319	217.75MB
Sat, February 9 2013	1667	349	3793	456	206.18MB
Sun, February 10 2013	1269	299	2995	382	211.99MB
Mon, February 11 2013	2690	269	9755	387	394.78MB
Tue, February 12 2013	5720	321	20327	610	855.46MB
Wed, February 13 2013	2347	251	8371	672	282.42MB
Thu, February 14 2013	1480	493	4909	1614	261.59MB
Fri, February 15 2013	2032	465	6667	1499	279.77MB
Sat, February 16 2013	1467	466	3042	1186	210.00MB
Sun, February 17 2013	1101	354	2524	1106	194.82MB
Mon, February 18 2013	2059	373	8749	1282	326.24MB
Tue, February 19 2013	1648	337	4875	996	274.83MB
Wed, February 20 2013	1760	356	5074	626	274.67MB
Thu, February 21 2013	2118	423	7278	1033	299.34MB
Fri, February 22 2013	1752	319	5685	1139	321.67MB

Sat, February 23 2013	498	203	3389	442	228.13MB
Sun, February 24 2013	528	205	4205	542	216.40MB
Mon, February 25 2013	623	233	6240	473	289.39MB
Tue, February 26 2013	603	220	5023	592	291.29MB
Wed, February 27 2013	572	217	6056	1169	307.01MB
Thu, February 28 2013	1961	364	6682	991	330.74MB
Fri, March 1 2013	1671	540	6310	1275	316.40MB
Sat, March 2 2013	1547	424	4704	572	304.30MB
Sun, March 3 2013	1521	328	4642	454	261.12MB
Mon, March 4 2013	1725	434	6377	579	339.07MB
Tue, March 5 2013	2552	391	11138	698	364.27MB
Wed, March 6 2013	1906	306	7020	415	293.46MB
Thu, March 7 2013	2061	372	6982	601	307.96MB
Fri, March 8 2013	2861	409	10058	456	372.69MB
Sat, March 9 2013	608	221	6394	446	234.75MB
Sun, March 10 2013	439	183	4669	484	228.03MB
Mon, March 11 2013	720	183	7609	635	303.50MB
Tue, March 12 2013	702	172	8399	794	375.20MB
Wed, March 13 2013	557	221	7226	550	295.51MB
Thu, March 14 2013	1913	383	7185	631	290.91MB
Fri, March 15 2013	1847	428	5408	615	243.79MB
Sat, March 16 2013	1606	383	4570	582	266.81MB
Sun, March 17 2013	2700	330	9351	382	391.89MB
Mon, March 18 2013	2301	406	6761	520	309.93MB
Tue, March 19 2013	1889	345	6753	436	281.03MB
Wed, March 20 2013	1653	383	5322	564	246.07MB
Thu, March 21 2013	1572	389	4160	544	262.60MB
Fri, March 22 2013	1678	355	4843	402	249.11MB
Sat, March 23 2013	901	257	5225	738	360.88MB
Sun, March 24 2013	542	182	3130	396	191.18MB
Mon, March 25 2013	649	317	7489	573	266.94MB
Tue, March 26 2013	2384	391	7173	584	324.17MB
Wed, March 27 2013	1939	437	6585	487	282.42MB
Thu, March 28 2013	1899	389	5037	449	234.19MB
Fri, March 29 2013	1712	387	5313	565	251.04MB
Sat, March 30 2013	1839	397	5290	545	182.21MB
Sun, March 31 2013	1428	392	4567	525	167.33MB
Mon, April 1 2013	1420	397	3599	469	215.55MB
Tue, April 2 2013	2436	503	7597	591	293.85MB
Wed, April 3 2013	2211	369	6778	350	262.86MB
Thu, April 4 2013	684	238	4530	687	246.12MB
Fri, April 5 2013	705	214	4523	765	306.85MB
Sat, April 6 2013	497	181	3370	495	215.43MB
Sun, April 7 2013	510	222	3285	740	198.64MB
Mon, April 8 2013	688	203	5851	698	347.71MB
Tue, April 9 2013	719	222	5364	613	295.59MB
Wed, April 10 2013	653	245	5257	1131	281.44MB
Thu, April 11 2013	1657	286	5027	515	281.15MB
Fri, April 12 2013	2355	524	7686	637	293.45MB

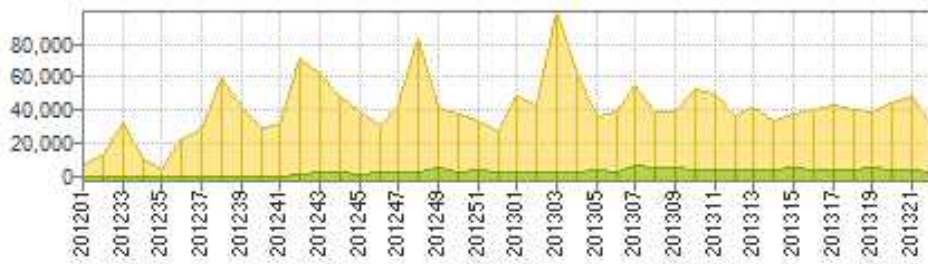
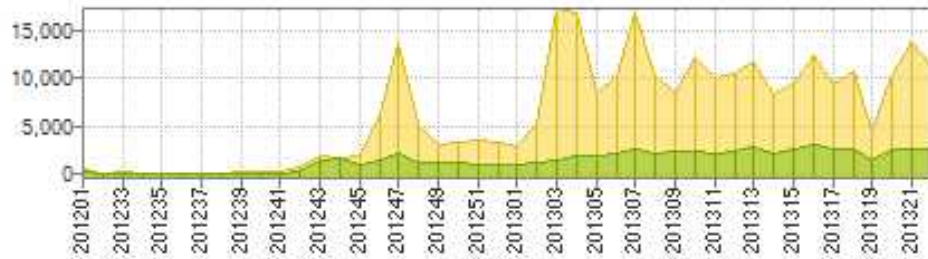
Sat, April 13 2013	1732	515	3725	575	194.69MB
Sun, April 14 2013	1692	486	5065	607	193.70MB
Mon, April 15 2013	2395	471	8033	557	276.87MB
Tue, April 16 2013	1698	489	4356	718	304.28MB
Wed, April 17 2013	1644	582	4102	682	237.61MB
Thu, April 18 2013	2318	432	6769	462	309.93MB
Fri, April 19 2013	1863	495	6192	560	321.45MB
Sat, April 20 2013	1945	389	5142	490	218.53MB
Sun, April 21 2013	538	181	6078	443	201.75MB
Mon, April 22 2013	643	233	8161	504	285.16MB
Tue, April 23 2013	621	179	4670	522	283.14MB
Wed, April 24 2013	775	214	7491	345	363.78MB
Thu, April 25 2013	1970	483	6566	1264	423.85MB
Fri, April 26 2013	1953	570	6366	769	313.07MB
Sat, April 27 2013	1675	531	4452	712	216.15MB
Sun, April 28 2013	1773	456	6014	544	261.59MB
Mon, April 29 2013	2262	554	6826	741	344.78MB
Tue, April 30 2013	1773	380	4996	387	232.13MB
Wed, May 1 2013	1801	408	5427	475	314.33MB
Thu, May 2 2013	1805	457	5387	563	346.04MB
Fri, May 3 2013	2155	403	8950	1049	347.98MB
Sat, May 4 2013	529	190	2999	542	203.60MB
Sun, May 5 2013	553	161	6069	678	275.51MB
Mon, May 6 2013	493	157	4159	938	249.43MB
Tue, May 7 2013	647	174	4261	862	331.12MB
Wed, May 8 2013	673	188	5880	737	296.29MB
Thu, May 9 2013	655	313	4908	661	277.66MB
Fri, May 10 2013	1007	282	11255	778	484.00MB
Sat, May 11 2013	568	151	2913	534	210.36MB
Sun, May 12 2013	524	208	5717	705	218.59MB
Mon, May 13 2013	661	170	7042	355	293.77MB
Tue, May 14 2013	660	187	5615	508	324.25MB
Wed, May 15 2013	632	198	6554	415	305.83MB
Thu, May 16 2013	2637	456	7949	648	307.28MB
Fri, May 17 2013	2732	499	9424	839	309.37MB
Sat, May 18 2013	1543	572	3843	1132	244.82MB
Sun, May 19 2013	1516	472	4302	650	204.55MB
Mon, May 20 2013	1875	295	6169	331	329.29MB
Tue, May 21 2013	2121	321	7049	347	251.15MB
Wed, May 22 2013	2265	400	9615	563	311.06MB
Thu, May 23 2013	2423	445	9021	1169	295.34MB
Fri, May 24 2013	2359	288	10752	582	305.91MB
Sat, May 25 2013	1659	463	3641	453	211.76MB
Sun, May 26 2013	1199	453	1827	706	158.26MB
Mon, May 27 2013	1482	481	3065	524	235.83MB
Tue, May 28 2013	1978	357	4512	404	303.13MB
Wed, May 29 2013	2491	427	8886	495	330.25MB
Thu, May 30 2013	2204	506	6229	684	301.59MB
Fri, May 31 2013	2580	566	7240	654	384.18MB

Sat, June 1 2013	518	339	1480	322	80.05MB
Total	277765	63343	1801401	127448	54,779.28MB
Maximum	5720	582	38922	1614	1,227.50MB
Minimum	1	0	13	0	0.00MB
Average	929	212	6025	426	183.21MB

Detail Weekly Activity

www.reading-travelinfo.co.uk

This section shows the activity for each week for the requested report period. **Note** A week starts on a Monday and ends on a Sunday. This report shows the year and week number of the year on the X-axis and the visits, page views, hits and bandwidth on the Y-axis.



	Humans	Spiders	Humans	Spiders	Bandwidth
201201 (01/02/2012 - 01/08/2012)	481	170	7138	434	262.86MB
201232 (08/06/2012 - 08/12/2012)	22	0	12854	0	0.00MB
201233 (08/13/2012 - 08/19/2012)	145	0	31997	0	0.00MB

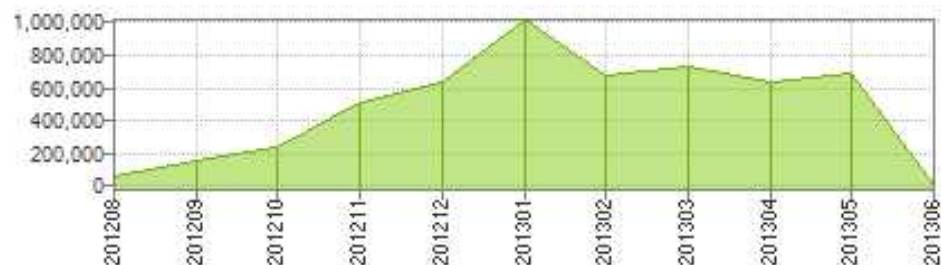
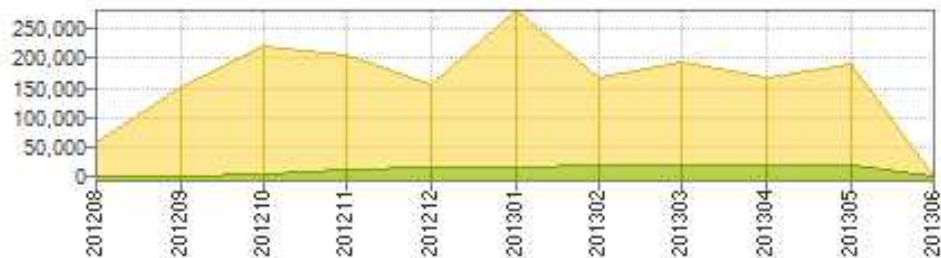
2012)					
201234 (08/20/2012 - 08/26/2012)	81	0	10290	0	0.00MB
201235 (08/27/2012 - 09/02/2012)	44	0	3779	0	0.00MB
201236 (09/03/2012 - 09/09/2012)	107	0	22274	0	0.00MB
201237 (09/10/2012 - 09/16/2012)	111	0	28776	0	0.00MB
201238 (09/17/2012 - 09/23/2012)	113	0	59564	0	0.00MB
201239 (09/24/2012 - 09/30/2012)	170	0	42130	0	0.00MB
201240 (10/01/2012 - 10/07/2012)	131	0	29210	0	0.00MB
201241 (10/08/2012 - 10/14/2012)	134	0	30859	0	0.00MB
201242 (10/15/2012 - 10/21/2012)	750	129	71679	808	562.59MB
201243 (10/22/2012 - 10/28/2012)	1768	1297	62089	2085	0.00MB
201244 (10/29/2012 - 11/04/2012)	1536	1585	47882	3226	0.00MB
201245 (11/05/2012 - 11/11/2012)	1844	846	39381	1933	0.00MB
201246 (11/12/2012 - 11/18/2012)	6029	1371	30433	2473	418.06MB
201247 (11/19/2012 - 11/25/2012)	13957	2138	43302	3305	1,593.62MB
201248 (11/26/2012 - 12/02/2012)	5262	1271	83784	3154	2,735.85MB
201249 (12/03/2012 - 12/09/2012)	2964	1260	41766	4786	1,534.06MB
201250 (12/10/2012 - 12/16/2012)	3295	1223	37469	2123	1,470.86MB
201251 (12/17/2012 - 12/23/2012)	3473	1054	33360	3791	1,600.46MB
201252 (12/24/2012 - 12/30/2012)	3197	990	26810	2801	1,399.23MB
201301 (12/31/2012 - 01/06/2013)	2863	845	48805	2627	1,312.73MB
201302 (01/07/2013 - 01/13/2013)	5229	1081	43051	3256	1,597.54MB
201303 (01/14/2013 - 01/20/2013)	17392	1345	99763	3204	3,296.31MB
201304 (01/21/2013 - 01/27/2013)	16863	1795	63404	3271	2,119.67MB
201305 (01/28/2013 - 02/03/2013)	8353	1793	36137	3716	1,610.84MB
201306 (02/04/2013 - 02/10/2013)	10420	2052	38863	3169	1,563.56MB
201307 (02/11/2013 - 02/17/2013)	16837	2619	55595	7074	2,478.85MB
201308 (02/18/2013 - 02/24/2013)	10363	2216	39255	6060	1,941.27MB
201309 (02/25/2013 - 03/03/2013)	8498	2326	39657	5526	2,100.24MB
201310 (03/04/2013 - 03/10/2013)	12152	2316	52638	3679	2,140.23MB
201311 (03/11/2013 - 03/17/2013)	10045	2100	49748	4189	2,167.62MB

2013)					
201312 (03/18/2013 - 03/24/2013)	10536	2317	36194	3600	1,900.81MB
201313 (03/25/2013 - 03/31/2013)	11850	2710	41454	3728	1,708.31MB
201314 (04/01/2013 - 04/07/2013)	8463	2124	33682	4097	1,739.30MB
201315 (04/08/2013 - 04/14/2013)	9496	2481	37975	4776	1,887.74MB
201316 (04/15/2013 - 04/21/2013)	12401	3039	40672	3912	1,870.42MB
201317 (04/22/2013 - 04/28/2013)	9410	2666	43720	4660	2,146.76MB
201318 (04/29/2013 - 05/05/2013)	10878	2553	40654	4435	2,064.38MB
201319 (05/06/2013 - 05/12/2013)	4567	1473	39093	5215	2,067.44MB
201320 (05/13/2013 - 05/19/2013)	10381	2554	44729	4547	1,989.87MB
201321 (05/20/2013 - 05/26/2013)	13901	2665	48074	4151	1,862.78MB
201322 (05/27/2013 - 06/02/2013)	11253	2676	31412	3083	1,635.04MB
Total	277765	61291	1801401	123320	54,779.28MB
Maximum	17392	3039	99763	7074	3,296.31MB
Minimum	22	0	3779	0	0.00MB
Average	6313	1393	40941	2803	1,244.98MB

Detail Monthly Activity

www.reading-travelinfo.co.uk

This section shows the activity for each month of the requested report period. For example if there are 2 months for which log data is available, then the values shown are the sum for each specific month. Values shown do not include failed requests.



	Humans	Spiders	Humans	Spiders	Bandwidth
201208	284	0	58102	0	0.00MB
201209	509	0	153562	0	0.00MB
201210	3546	2010	221631	4428	562.59MB
201211	27142	6277	205998	11816	4,347.41MB
201212	14133	5047	157533	14675	6,667.59MB

201301	49230	6275	281675	14754	9,417.78MB
201302	42849	8505	167199	20848	7,721.41MB
201303	49322	10735	195690	17497	8,798.77MB
201304	43805	11244	167871	18573	8,221.14MB
201305	46427	10648	190660	19981	8,962.53MB
201306	518	339	1480	322	80.05MB
Total	277765	62472	1801401	125696	54,779.28MB
Maximum	49322	11244	281675	20848	9,417.78MB
Minimum	284	0	1480	0	0.00MB
Average	25251	5679	163764	11427	4,979.93MB

Visitor Conversions

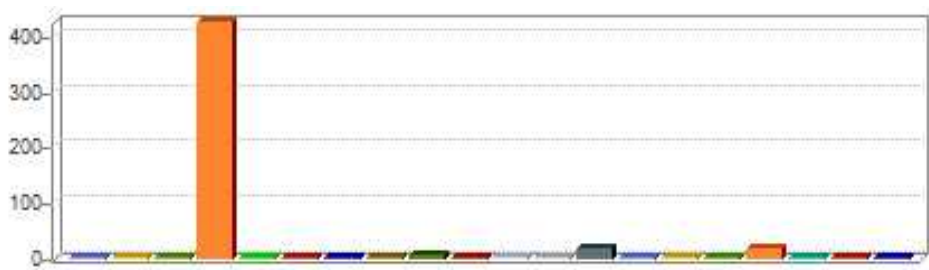
www.reading-travelinfo.co.uk

This section shows the human visitors who reached a conversion page

Last Visitors Click Path

www.reading-travelinfo.co.uk

This report shows the last 200 visitors to your web site - human and spiders , the keywords they used and which pages they looked at.
The sorting is most recent visitor first



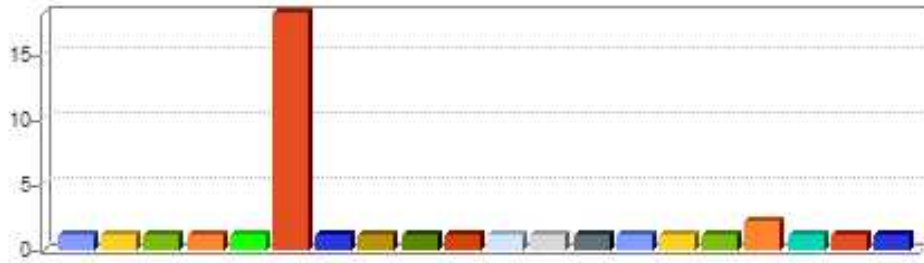
	Date	IP Address	Domain Name/IP Address	Referer	Search Phrase	Page Views
1	2013/06/01 10:09 AM	::1	::1	Direct Traffic		1
2	2013/06/01 10:06 AM	78.109.162.206	78.109.162.206	Direct Traffic		1
3	2013/06/01 10:04 AM	::1	::1	Direct Traffic		1
4	2013/06/01 10:00 AM	64.5.1.235	64.5.1.235	Direct Traffic		423
5	2013/06/01 09:59 AM	::1	::1	Direct Traffic		1
6	2013/06/01 09:54 AM	::1	::1	Direct Traffic		1
7	2013/06/01 09:51 AM	78.109.162.206	78.109.162.206	Direct Traffic		1
8	2013/06/01 09:49 AM	::1	::1	Direct Traffic		1
9	2013/06/01 09:49 AM	89.187.107.42	89.187.107.42	Direct Traffic		4
10	2013/06/01 09:48 AM	143.28.232.29	143.28.232.29	Direct Traffic		1
11	2013/06/01 09:48 AM	89.187.107.42	89.187.107.42	Direct Traffic		2
12	2013/06/01 09:44 AM	::1	::1	Direct Traffic		1
13	2013/06/01 09:42 AM	217.40.38.225	217.40.38.225	Direct Traffic		15
14	2013/06/01 09:39 AM	86.21.112.41	86.21.112.41	www.google.co.uk/search		1
15	2013/06/01 09:39 AM	::1	::1	Direct Traffic		1
16	2013/06/01 09:36 AM	78.109.162.206	78.109.162.206	Direct Traffic		1

17	2013/06/01 09:34 AM	212.183.128.214	212.183.128.214	www.google.co.uk	18
18	2013/06/01 09:34 AM	::1	::1	Direct Traffic	1
19	2013/06/01 09:29 AM	58.107.69.175	58.107.69.175	Direct Traffic	1
20	2013/06/01 09:29 AM	::1	::1	Direct Traffic	1
Subtotal this Page					477
Total all Pages					1880

Last Spider Paths

www.reading-travelinfo.co.uk

This report shows the last 200 spiders to your web site and which pages they looked at. The sorting is most recent spider first



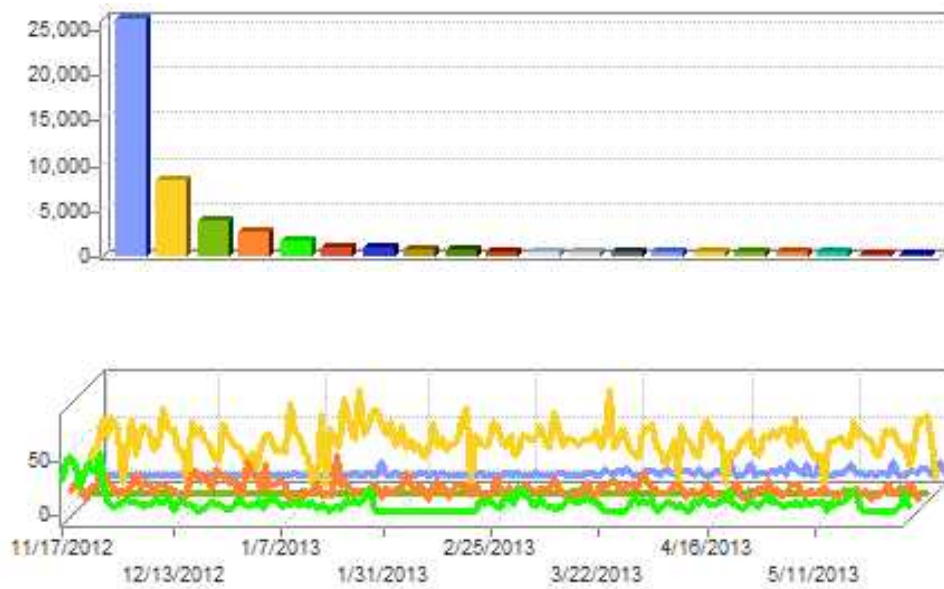
	Date	IP Address	Domain Name/IP Address	Spider	Page Views
1	2013/06/01 10:11 AM	123.125.71.28	123.125.71.28	-	1
2	2013/06/01 10:10 AM	123.125.71.58	123.125.71.58	-	1
3	2013/06/01 10:04 AM	173.199.115.35	173.199.115.35	-	1
4	2013/06/01 10:04 AM	220.181.108.91	220.181.108.91	-	1
5	2013/06/01 10:03 AM	66.249.71.78	66.249.71.78	Googlebot	1
6	2013/06/01 10:01 AM	207.46.98.135	207.46.98.135	msnbot	18
7	2013/06/01 10:01 AM	123.125.71.104	123.125.71.104	-	1
8	2013/06/01 10:00 AM	123.125.71.108	123.125.71.108	-	1
9	2013/06/01 09:55 AM	173.199.115.35	173.199.115.35	-	1
10	2013/06/01 09:54 AM	220.181.108.95	220.181.108.95	-	1
11	2013/06/01 09:54 AM	220.181.108.94	220.181.108.94	-	1
12	2013/06/01 09:50 AM	123.125.71.74	123.125.71.74	-	1
13	2013/06/01 09:48 AM	173.199.115.35	173.199.115.35	-	1
14	2013/06/01 09:47 AM	220.181.108.120	220.181.108.120	-	1
15	2013/06/01 09:47 AM	220.181.108.78	220.181.108.78	-	1
16	2013/06/01 09:44 AM	220.181.108.185	220.181.108.185	-	1
17	2013/06/01 09:42 AM	66.162.42.131	66.162.42.131	-	2
18	2013/06/01 09:37 AM	66.249.71.78	66.249.71.78	Googlebot	1
19	2013/06/01 09:34 AM	173.199.115.35	173.199.115.35	-	1
20	2013/06/01 09:34 AM	220.181.108.118	220.181.108.118	-	1

Subtotal this Page	38
Total all Pages	163

Top Referring Domains

www.reading-travelinfo.co.uk

This section shows the domain names or numeric IP addresses of referers of visitors to your site. This information is only available if provided in the log file.



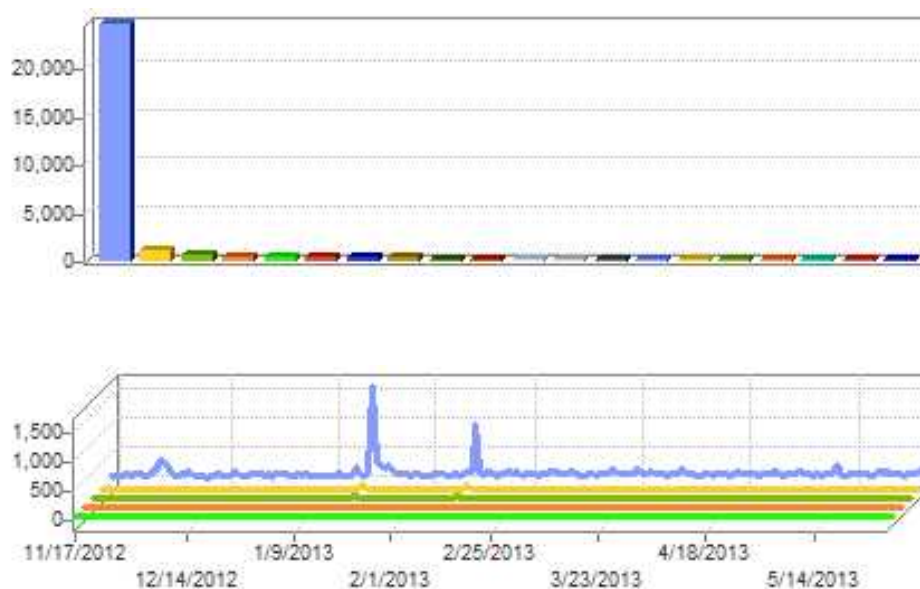
	Referrer	Visits	% of Total Visits	Bandwidth
1	google	25989	52.55 %	1,376.49MB
2	reading.gov.uk	8196	16.57 %	226.34MB
3	Direct Traffic	3733	7.55 %	166.36MB
4	reading-buses.co.uk	2561	5.18 %	72.19MB
5	rscontent.co.uk	1576	3.19 %	64.21MB
6	image.baidu.com/i	766	1.55 %	5.03MB
7	www.bing.com/search	694	1.40 %	35.75MB
8	yahoo	544	1.10 %	27.16MB
9	64.5.1.6	498	1.01 %	2.43MB
10	www.reading.gov.uk/a-to-z/b/bus-p	368	0.74 %	9.96MB
11	t.co	351	0.71 %	17.02MB
12	bing.com/images/search	340	0.69 %	66.66MB
13	readingcyclecampaign.org.uk	267	0.54 %	5.78MB
14	ask	263	0.53 %	19.50MB
15	local.direct.gov.uk/ldgredirect/m	233	0.47 %	4.85MB
16	intra	182	0.37 %	5.89MB
17	intranet.fwuk.fwc	175	0.35 %	4.90MB
18	america on line	153	0.31 %	4.82MB
19	search.bt.com/result	121	0.24 %	4.76MB
20	domains.checkparams.com/	94	0.19 %	1.70MB

index.php			
Subtotal this Page	47104	95.24 %	2,121.80MB
Total all Pages	49453	100.00 %	2,260.59MB

Top Search Engines

www.reading-travelinfo.co.uk

This section shows the Search Engines which were used to find your site.



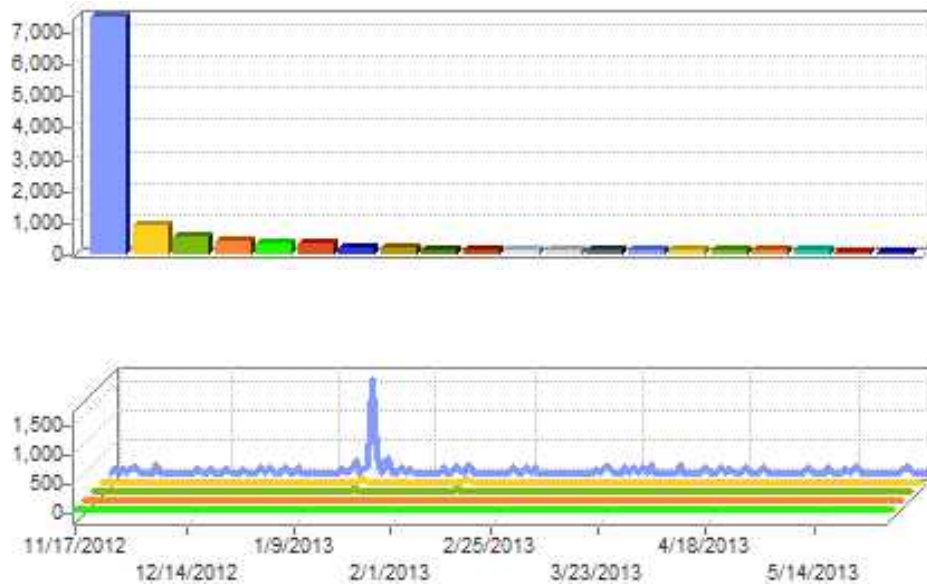
	Engine	Visits	% of Total Visits
1	Google	24549	86.11 %
2	www.bing.com/search	852	2.99 %
3	Yahoo!	470	1.65 %
4	www.reading.gov.uk/a-to-z/b/bus-passes-transept-consu	321	1.13 %
5	Ask	275	0.96 %
6	local.direct.gov.uk/ldgredirect/maplocationsearch.do	252	0.88 %
7	America on line	168	0.59 %
8	search.bt.com/result	125	0.44 %
9	search.conduit.com/results.aspx	86	0.30 %
10	isearch.avg.com/search	75	0.26 %
11	www.facebook.com/l.php	71	0.25 %
12	www.reading-forum.co.uk/forum/viewtopic.php	67	0.24 %
13	www.johnlewis.com/shops/dswhere.aspx	65	0.23 %
14	www.westberks.gov.uk/index.aspx	61	0.21 %
15	www.lovetoride.net/reading/pages/info	54	0.19 %
16	search.mywebsearch.com/mywebsearch/ggmain.jhtml	47	0.16 %
17	www.baidu.com/s	46	0.16 %
18	search.sky.com/web	40	0.14 %
19	www.talktalk.co.uk/search/results.html	38	0.13 %

20	inside.reading.gov.uk/ myhome/staffstuff/article.asp	34	0.12 %
	Subtotal this Page	27696	97.14 %
	Total all Pages	28510	100.00 %

Organic Search Engines

www.reading-travelinfo.co.uk

This section shows the Organic Search Engines which were used to find your site.



	Engine	Visits	% of Total Visits
1	Google	7414	65.97 %
2	www.bing.com/search	852	7.58 %
3	Yahoo!	470	4.18 %
4	www.reading.gov.uk/a-to-z/b/bus-passes-transept-consu	321	2.86 %
5	Ask	275	2.45 %
6	local.direct.gov.uk/ldgredirect/maplocationsearch.do	252	2.24 %
7	America on line	168	1.49 %
8	search.bt.com/result	125	1.11 %
9	isearch.avg.com/search	75	0.67 %
10	www.facebook.com/l.php	71	0.63 %
11	www.reading-forum.co.uk/forum/viewtopic.php	67	0.60 %
12	www.johnlewis.com/shops/dswhere.aspx	65	0.58 %
13	www.westberks.gov.uk/index.aspx	61	0.54 %
14	www.lovetoride.net/reading/pages/info	54	0.48 %
15	search.mywebsearch.com/mywebsearch/ggmain.jhtml	47	0.42 %
16	www.baidu.com/s	46	0.41 %
17	search.sky.com/web	40	0.36 %
18	www.talktalk.co.uk/search/results.html	38	0.34 %
19	inside.reading.gov.uk/myhome/	34	0.30 %

	staffstuff/article.asp		
20	www.rmweb.co.uk/community/index.php	32	0.28 %
	Subtotal this Page	10507	93.49 %
	Total all Pages	11238	100.00 %

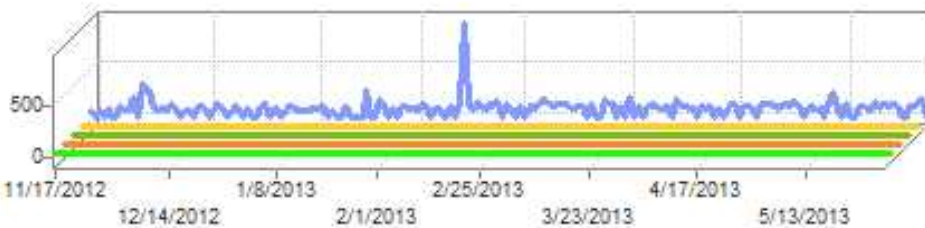
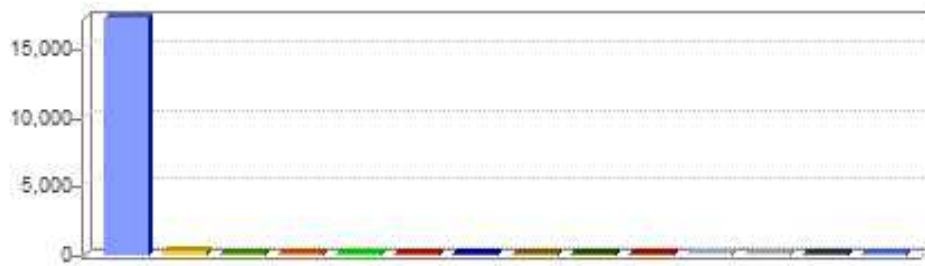
Paid Search Engines

www.reading-travelinfo.co.uk

This section shows the Search Engines which were used to find your site. Only Paid Search Engines are shown. To be classified as "Paid", the following parameter pair must be added to the URL called by the Search engine: **source="Search Engine"** where the "Search Engine" must be replaced with the search engine name

Example: Coming from overture

<http://www.mysite.com/mypage.htm?source=overture>

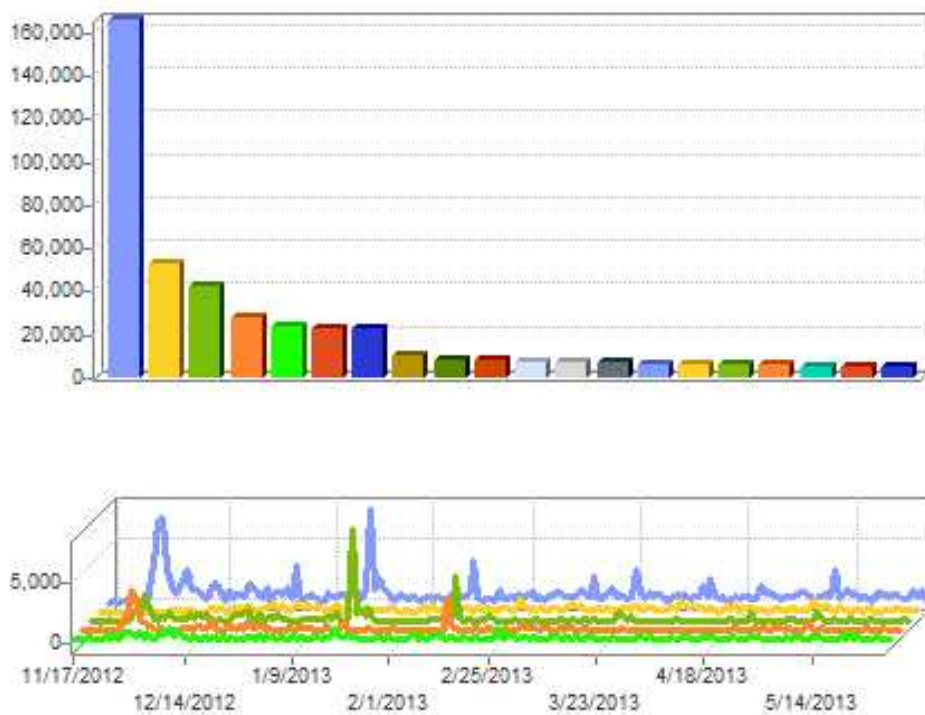


	Engine	Visits	% of Total Visits
1	Google	17135	99.21 %
2	search.conduit.com/results.aspx	86	0.50 %
3	search.incredibar.com/search.php	20	0.12 %
4	search.softonic.com/inf00227/tb_v1	10	0.06 %
5	search.conduit.com/resultsext.aspx	7	0.04 %
6	PPC Google Adsense	3	0.02 %
7	advancedsearch2.virginmedia.com/main	3	0.02 %
8	www.safesearch.net/search	2	0.01 %
9	images.search.conduit.com/imagepreview/	1	0.01 %
10	paper.li/bowgart99/1327143897	1	0.01 %
11	search.incredimail.com/search.php	1	0.01 %
12	www.anywhere.me/gresult	1	0.01 %
13	www.getreading.co.uk/news/s/2131433_council_experts_c	1	0.01 %
14	www.webaddresshelp.bt.com/main	1	0.01 %
	Total all Pages	17272	100.00 %

Top Search Phrases

www.reading-travelinfo.co.uk

This section shows the search phrases that were used by users on Search Engines to find your site.



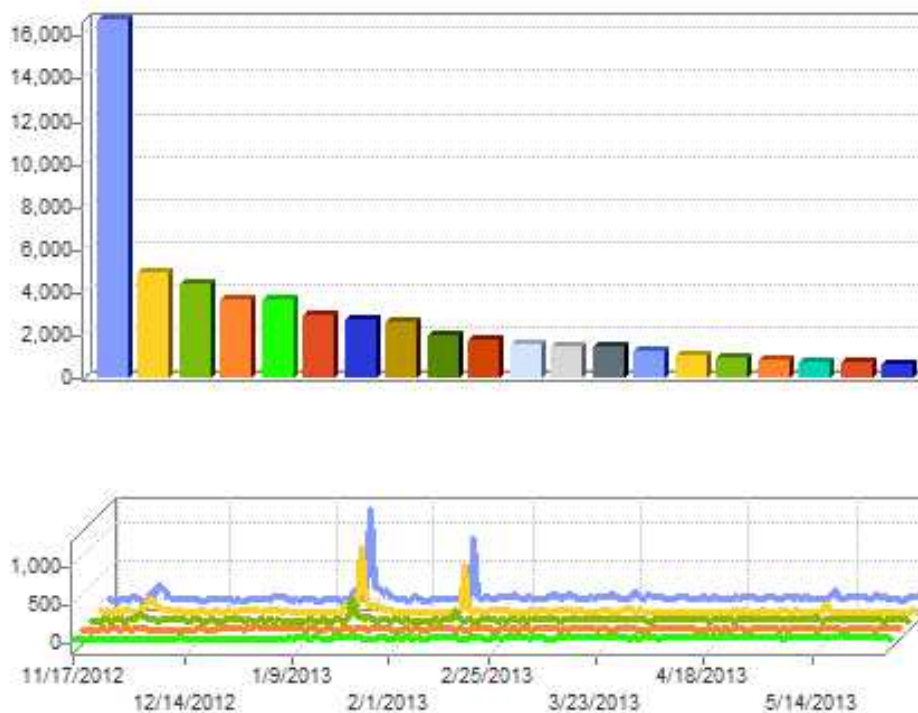
	Phrases	Visits	% of Total Visits
1	-	165057	18.08 %
2	reading park and ride	51459	5.64 %
3	reading traffic cameras	41720	4.57 %
4	reading traffic	26518	2.90 %
5	reading travel info	22570	2.47 %
6	reading travel	22222	2.43 %
7	park and ride reading	21706	2.38 %
8	reading buses	8830	0.97 %
9	reading travel news	7350	0.80 %
10	traffic reading	6833	0.75 %
11	travel reading	6318	0.69 %
12	reading traffic camera	5905	0.65 %
13	traffic in reading	5879	0.64 %
14	www.reading-travelinfo.co.uk	5163	0.57 %
15	traffic cameras in reading	4816	0.53 %
16	reading traffic cams	4763	0.52 %
17	traffic cameras reading	4696	0.51 %
18	tr live	4549	0.50 %
19	reading traffic information	4373	0.48 %
20	traffic in reading town centre	3997	0.44 %

Subtotal this Page	424724	46.52 %
Total all Pages	913070	100.00 %

Top Search Keywords

www.reading-travelinfo.co.uk

This section shows the keywords that were used by the Search Engines to find your site.



	Keyword	Count	% of Total Count
1	reading	16664	19.11 %
2	traffic	4872	5.59 %
3	-	4334	4.97 %
4	park	3607	4.14 %
5	bus	3539	4.06 %
6	cameras	2792	3.20 %
7	and	2592	2.97 %
8	ride	2523	2.89 %
9	live	1921	2.20 %
10	travel	1625	1.86 %
11	to	1447	1.66 %
12	buses	1408	1.61 %
13	in	1367	1.57 %
14	station	1102	1.26 %
15	parking	901	1.03 %
16	road	887	1.02 %
17	timetable	755	0.87 %
18	madejski	603	0.69 %
19	from	584	0.67 %
20	council	554	0.64 %

Subtotal this Page	54077	62.01 %
Total all Pages	87198	100.00 %

Search Phrases Per Engine

www.reading-travelinfo.co.uk

This section shows the Phrases that visitors used to reach your site. The sorting is per Search Engine.

No data available for this report

Search by Keyword

www.reading-travelinfo.co.uk

This section displays the visitors from a specific search engine using a specific search phrase to reach your site

No data available for this report

Ad Views and Clicks

www.reading-travelinfo.co.uk

No data available for this report

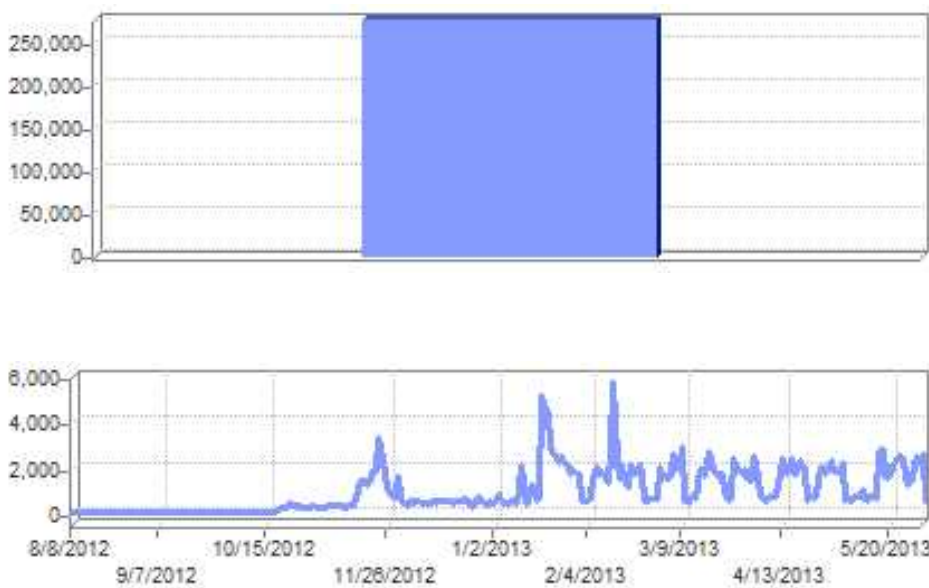
Who is on

www.reading-travelinfo.co.uk

Top Visitors

www.reading-travelinfo.co.uk

This section identifies the IP address and/or the domain name and their relative activity level on the site. This report exclude visits from spiders or robots. Values shown do not include failed requests. If the option is set to use cookie tracking visitors with the same cookie information and different IP address are grouped together pointing to the first IP address with which the cookie is associated. Cookies can only be tracked in IIS log files by SurfStats or SurfStatsLive.

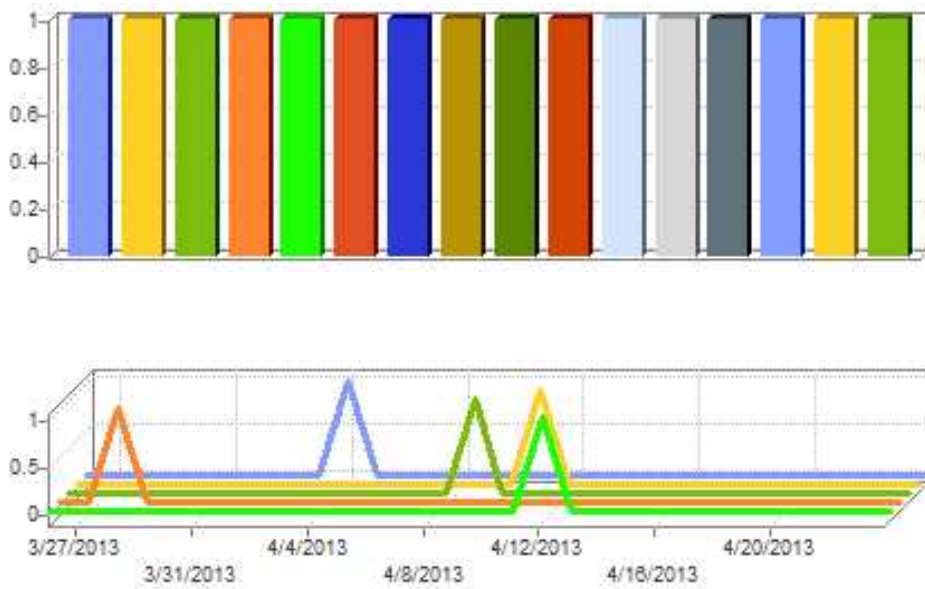


	IP Address	Domain Name/IP Address	Page Views	% of Total Page Views	Visits
1	255.255.255.255	135.196.172.179	1801401	100.00 %	277765
		Total all Pages	1801401	100.00 %	277765

New Visitors

www.reading-travelinfo.co.uk

This section identifies the IP address and/or the domain name and their relative activity level on the site. This report exclude visits from spiders or robots. This only shows visitors that has visited your site for the first time

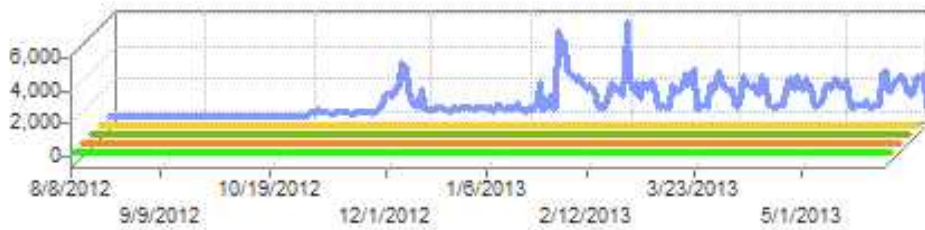
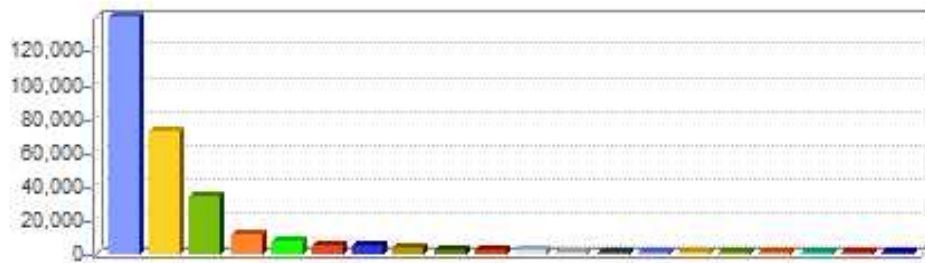


	IP Address	Domain Name/IP Address	Page Views	% of Total Page Views	Visits
1	182.118.25.218	182.118.25.218	3	0.00 %	1
2	182.118.20.229	182.118.20.229	2	0.00 %	1
3	182.118.21.226	182.118.21.226	2	0.00 %	1
4	182.118.25.214	182.118.25.214	2	0.00 %	1
5	157.56.93.222	157.56.93.222	1	0.00 %	1
6	182.118.20.168	182.118.20.168	1	0.00 %	1
7	182.118.20.181	182.118.20.181	1	0.00 %	1
8	182.118.20.185	182.118.20.185	1	0.00 %	1
9	182.118.20.186	182.118.20.186	1	0.00 %	1
10	182.118.20.221	182.118.20.221	1	0.00 %	1
11	182.118.20.249	182.118.20.249	1	0.00 %	1
12	182.118.21.219	182.118.21.219	1	0.00 %	1
13	182.118.25.212	182.118.25.212	1	0.00 %	1
14	202.108.11.100	202.108.11.100	1	0.00 %	1
15	202.46.50.138	202.46.50.138	1	0.00 %	1
16	77.78.104.50	77.78.104.50	1	0.00 %	1
Subtotal this Page			21	0.00 %	16
Total all Pages			1801795	100.00 %	278092

Returning Visitors

www.reading-travelinfo.co.uk

This section identifies the IP address and/or the domain name and their relative activity level on the site. This report exclude visits from spiders or robots.This only shows visitors that has visited your site more than once.

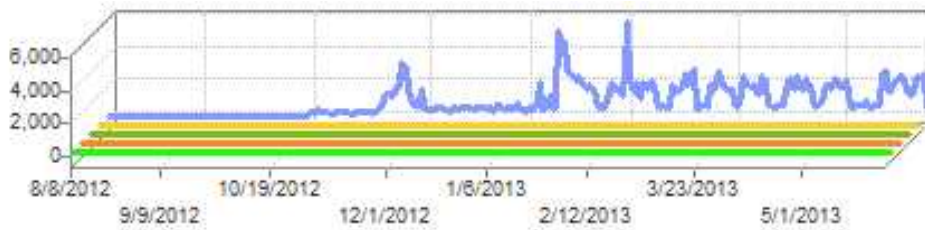
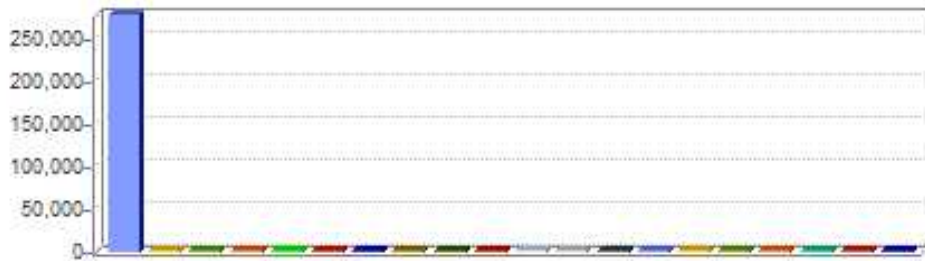


	IP Address	Domain Name/IP Address	Page Views	% of Total Page Views	Visits
1	255.255.255.255	135.196.172.179	906421	50.31 %	139220
2	255.255.255.255	135.196.172.179	415490	23.06 %	71108
3	255.255.255.255	135.196.172.179	255295	14.17 %	33417
4	255.255.255.255	135.196.172.179	75017	4.16 %	10468
5	255.255.255.255	135.196.172.179	49422	2.74 %	5991
6	255.255.255.255	135.196.172.179	17446	0.97 %	4327
7	255.255.255.255	135.196.172.179	14465	0.80 %	4015
8	255.255.255.255	135.196.172.179	12935	0.72 %	2465
9	255.255.255.255	135.196.172.179	6753	0.37 %	1889
10	255.255.255.255	135.196.172.179	6192	0.34 %	1863
11	255.255.255.255	135.196.172.179	4302	0.24 %	1516
12	255.255.255.255	135.196.172.179	8563	0.48 %	576
13	255.255.255.255	135.196.172.179	12693	0.70 %	522
14	255.255.255.255	135.196.172.179	16407	0.91 %	388
15	157.56.93.212	157.56.93.212	176	0.01 %	145
16	157.56.92.146	157.56.92.146	22	0.00 %	23
17	182.118.22.212	182.118.22.212	18	0.00 %	10
18	182.118.20.216	182.118.20.216	7	0.00 %	8
19	182.118.22.228	182.118.22.228	9	0.00 %	7
20	182.118.20.176	182.118.20.176	5	0.00 %	6
Subtotal this Page			1801638	99.98 %	277964
Total all Pages			1801795	100.00 %	278092

Top Visitor Organizations

www.reading-travelinfo.co.uk

This section identifies the organization and its relative activity level on the site. All visits from the same IP address or organization are totalled.

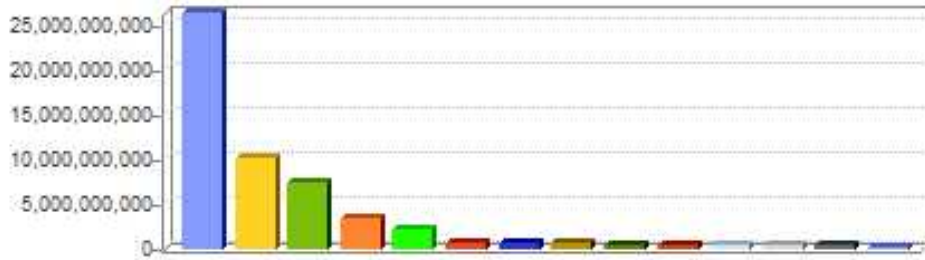


	Domain Name/IP Address	Page Views	% of Total Page Views	Visits
1	135.196.172.179	1801401	99.98 %	277765
2	157.56.93.212	176	0.01 %	145
3	157.56.92.146	22	0.00 %	23
4	182.118.22.212	18	0.00 %	10
5	182.118.20.216	7	0.00 %	8
6	182.118.22.228	9	0.00 %	7
7	182.118.20.176	5	0.00 %	6
8	182.118.22.211	7	0.00 %	6
9	182.118.22.227	11	0.00 %	6
10	182.118.20.170	5	0.00 %	5
11	182.118.20.217	7	0.00 %	5
12	182.118.20.218	8	0.00 %	5
13	182.118.20.162	4	0.00 %	4
14	182.118.20.169	3	0.00 %	4
15	182.118.20.203	5	0.00 %	4
16	182.118.20.232	6	0.00 %	4
17	182.118.22.203	4	0.00 %	4
18	182.118.25.217	4	0.00 %	4
19	182.118.25.224	4	0.00 %	4
20	182.118.20.173	3	0.00 %	3
Subtotal this Page		1801709	99.99 %	278022
Total all Pages		1801795	100.00 %	278092

Top Visitors by Bandwidth

www.reading-travelinfo.co.uk

This section identifies the top visitors sorted by bandwidth. Values shown do not include failed requests. Note that including or excluding of images on a site profile can have a dramatic effect on the bandwidth statistics recorded as on most sites the biggest part of bandwidth consumed is in the download of images present on web pages.



	IP Address	Domain Name/IP Address	Page Views	% of Total Page Views	Visits
1	255.255.255.255	135.196.172.179	906421	50.32 %	139220
2	255.255.255.255	135.196.172.179	415490	23.06 %	71108
3	255.255.255.255	135.196.172.179	255295	14.17 %	33417
4	255.255.255.255	135.196.172.179	75017	4.16 %	10468
5	255.255.255.255	135.196.172.179	49422	2.74 %	5991
6	255.255.255.255	135.196.172.179	12935	0.72 %	2465
7	255.255.255.255	135.196.172.179	17446	0.97 %	4327
8	255.255.255.255	135.196.172.179	14465	0.80 %	4015
9	255.255.255.255	135.196.172.179	6192	0.34 %	1863
10	255.255.255.255	135.196.172.179	12693	0.70 %	522
11	255.255.255.255	135.196.172.179	6753	0.37 %	1889
12	255.255.255.255	135.196.172.179	8563	0.48 %	576
13	255.255.255.255	135.196.172.179	4302	0.24 %	1516
14	255.255.255.255	135.196.172.179	16407	0.91 %	388
	Total all Pages		1801401	100.00 %	277765

Authenticated Top Visitors

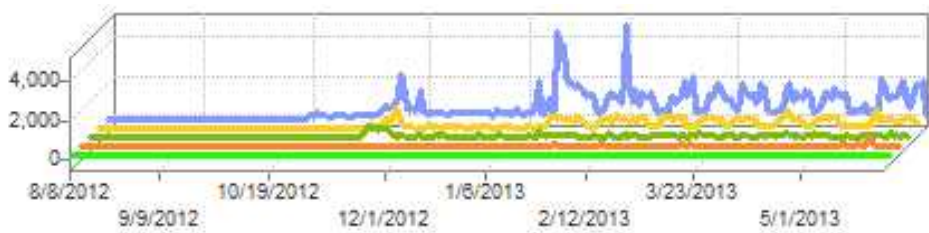
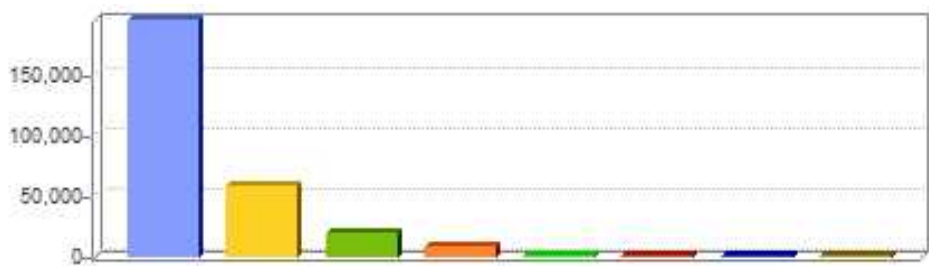
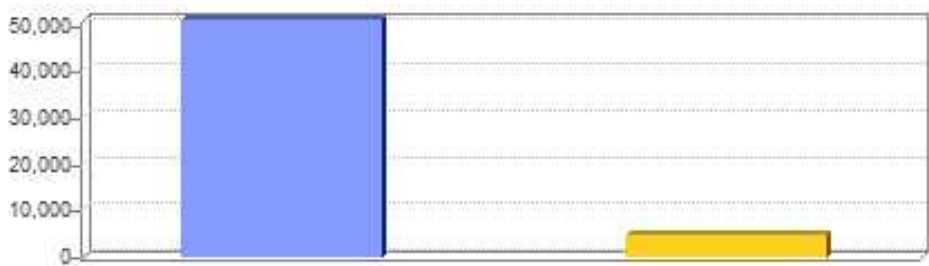
www.reading-travelinfo.co.uk

This section identifies the name and relative activity level of the users logging onto a server that requires user name and password. The client is normally presented with a user name and password dialog box.

Top Visitor Regions

www.reading-travelinfo.co.uk

This section displays the regions human visitors came from.



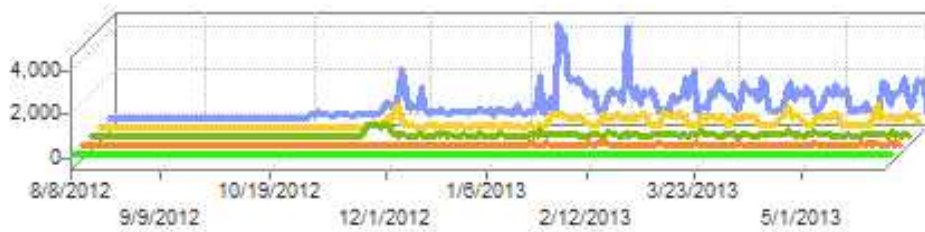
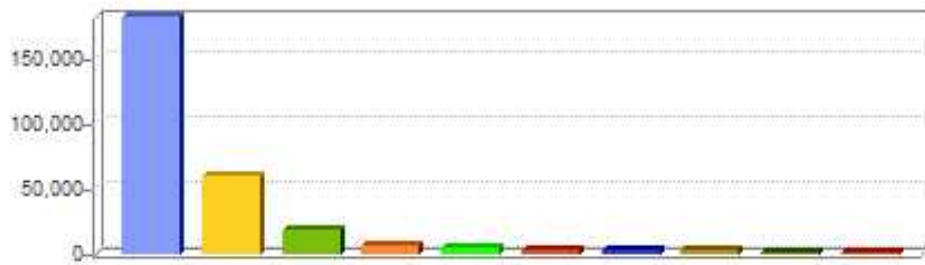
	Region	Page Views	% of Total Page Views	Visits
1	Europe	1361968	75.60 %	194389
2	Unknown	309030	17.15 %	57930
3	North America	111056	6.16 %	17850
4	Asia	15551	0.86 %	6892
5	Oceania	1494	0.08 %	308
6	Middle East	1507	0.08 %	255
7	South America	498	0.03 %	87
8	Africa	328	0.02 %	85

Total all Pages	1801432	100.00 %	277796
------------------------	----------------	-----------------	---------------

Top Visitor Countries

www.reading-travelinfo.co.uk

This section identifies the countries where your visitors are registered. It may not be the actual location of the visitor. Note : Domain names which were not resolved are shown as " Unknown "



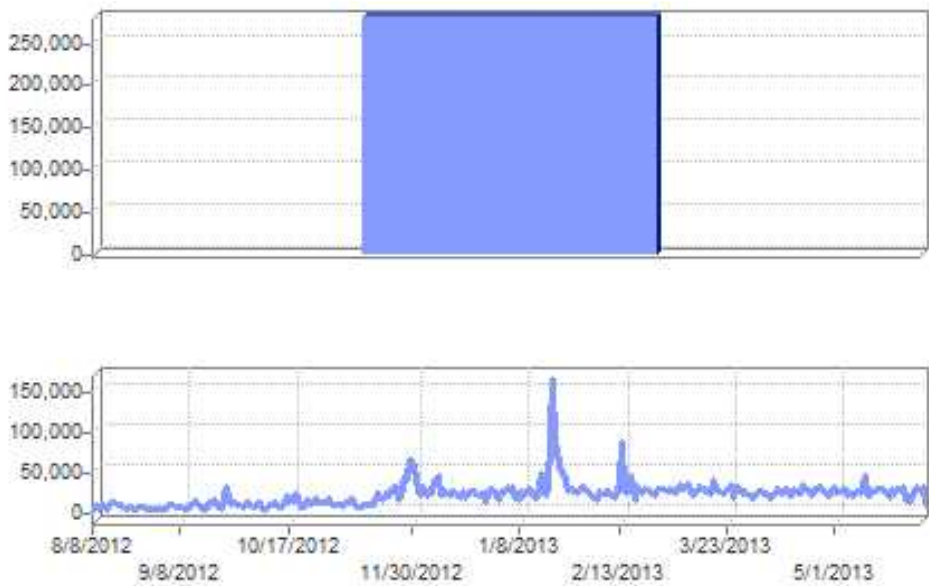
	Country	Page Views	% of Total Page Views	Visits	Bandwidth
1	United Kingdom	1290716	71.65 %	181310	36,579.83MB
2	(-)	308195	17.11 %	57921	6,188.34MB
3	United States	109823	6.10 %	17157	4,251.69MB
4	Germany	29535	1.64 %	5787	1,331.04MB
5	China	4160	0.23 %	2991	89.40MB
6	Japan	2411	0.13 %	2209	45.97MB
7	Spain	5673	0.31 %	1324	187.17MB
8	Sweden	2107	0.12 %	966	72.31MB
9	France	12527	0.70 %	838	248.96MB
10	South Korea	4497	0.25 %	798	19.83MB
11	Italy	4209	0.23 %	714	103.67MB
12	Turkey	2066	0.11 %	656	154.71MB
13	Canada	1109	0.06 %	644	68.10MB

14	Netherlands	2154	0.12 %	638	93.93MB
15	Ireland	1957	0.11 %	413	71.02MB
16	Australia	1327	0.07 %	261	98.05MB
17	India	1079	0.06 %	218	48.07MB
18	Poland	1025	0.06 %	196	61.49MB
19	Portugal	996	0.06 %	185	49.88MB
20	Norway	972	0.05 %	165	21.88MB
	Subtotal this Page	1786538	99.17 %	275391	49,785.33MB
	Total all Pages	1801432	100.00 %	277796	50,490.62MB

Top Visitor States

www.reading-travelinfo.co.uk

This section displays the states human visitors came from.

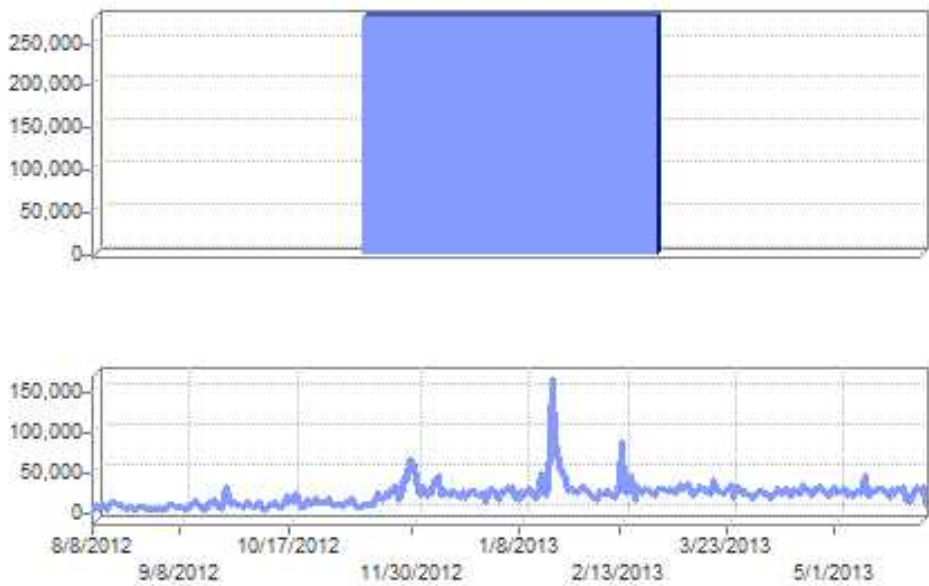


	State	Page Views	% of Total Page Views	Visits
1	-	1801795	100.00 %	278092
	Total all Pages	1801795	100.00 %	278092

Top Visitor Cities

www.reading-travelinfo.co.uk

This section displays the cities human visitors came from.



	City	Page Views	% of Total Page Views	Visits
1	-	1801795	100.00 %	278092
	Total all Pages	1801795	100.00 %	278092

Top Visitor Regions and Countries

www.reading-travelinfo.co.uk

This section displays the regions and countries human visitors came from.

No data available for this report

Top Visitor Countries and States

www.reading-travelinfo.co.uk

This section displays the countries and states human visitors came from.

No data available for this report

Top Visitor States and Cities

www.reading-travelinfo.co.uk

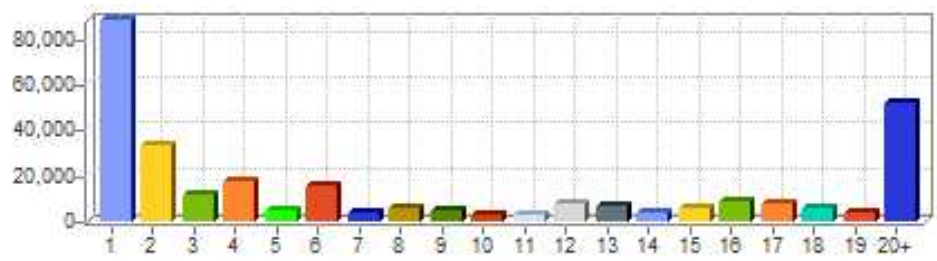
This section displays the states and cities human visitors came from.

No data available for this report

Views Per Visit

www.reading-travelinfo.co.uk

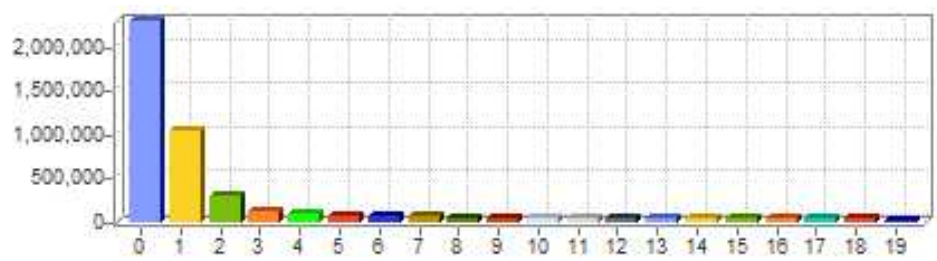
This section displays the number of visits for the number of pages viewed.



Length of Visit

www.reading-travelinfo.co.uk

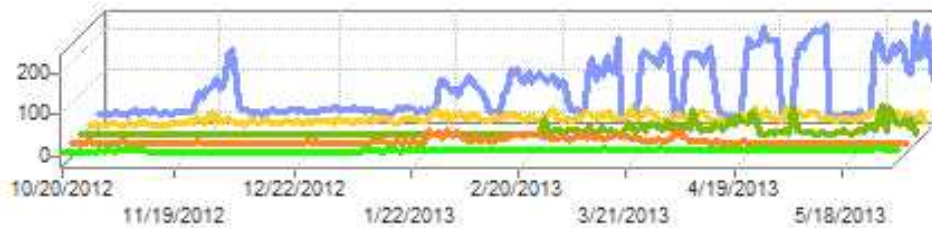
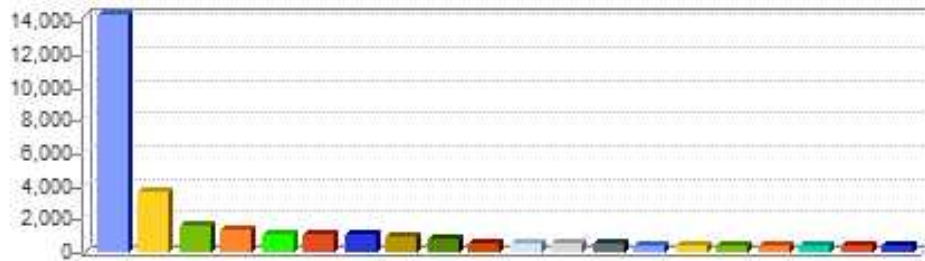
This sections displays the number of visits, number of page views and the bandwidth utilized compared per time spent in minutes by visitors to your site.



Top Spiders

www.reading-travelinfo.co.uk

This section identifies the IP address and origin of spiders and robots to your web site. Values shown do not include failed requests. A visitor is marked as a spider when the file robots.txt is requested.

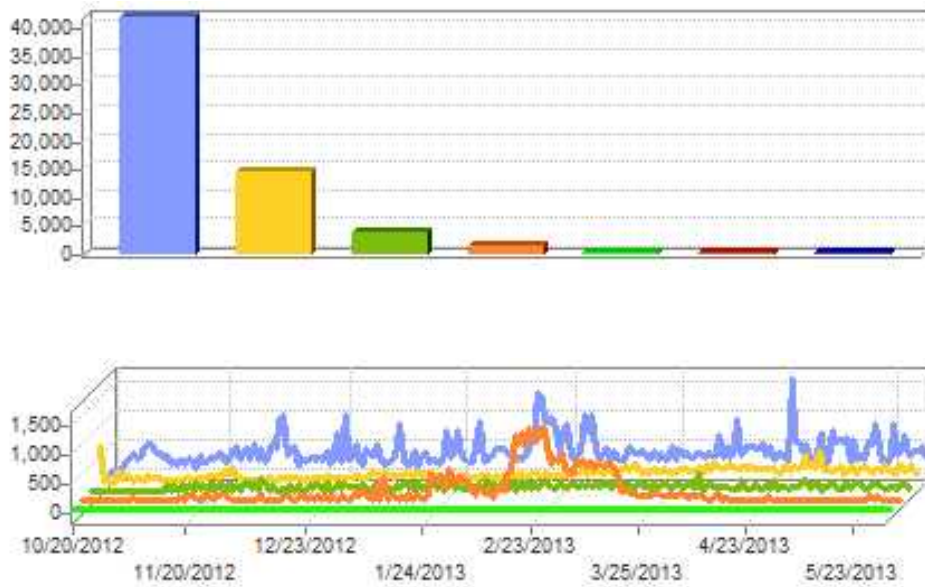


	IP Address	Domain Name/IP Address	Country	Spider	Page Views	% of Total Page Views	Visits
1	66.249.71.78	66.249.71.78	United States	Googlebot	26201	21.39 %	14294
2	207.46.98.135	207.46.98.135	United States	msnbot	14160	11.56 %	3581
3	178.154.243.114	178.154.243.114	United Kingdom	-	2757	2.25 %	1563
4	66.196.90.12	66.196.90.12	United States	Slurp	3380	2.76 %	1214
5	208.115.113.87	208.115.113.87	United States	-	3057	2.50 %	978
6	82.94.176.141	82.94.176.141	Netherlands	-	3118	2.55 %	977
7	208.115.111.71	208.115.111.71	United States	-	2935	2.40 %	922
8	82.94.176.145	82.94.176.145	Netherlands	-	1957	1.60 %	806
9	178.154.243.93	178.154.243.93	United Kingdom	-	2040	1.67 %	668
10	157.56.229.188	157.56.229.188	United States	-	819	0.67 %	418
11	38.101.148.120	38.101.148.120	United States	-	908	0.74 %	417
12	178.255.215.67	178.255.215.67	United Kingdom	-	370	0.30 %	347
13	157.56.93.37	157.56.93.37	United States	-	564	0.46 %	342
14	157.55.33.253	157.55.33.253	United States	-	709	0.58 %	321
15	157.55.32.186	157.55.32.186	United States	-	453	0.37 %	316
16	173.199.120.147	173.199.120.147	(-)	-	437	0.36 %	303
17	157.55.32.93	157.55.32.93	United States	-	409	0.33 %	292
18	173.199.115.179	173.199.115.179	(-)	-	325	0.27 %	278
19	157.55.35.37	157.55.35.37	United States	-	499	0.41 %	272
20	37.140.141.13	37.140.141.13	(-)	-	0	0.00 %	263
Subtotal this Page					65098	53.17 %	28572
Total all Pages					122500	100.00 %	60753

Top Spider Organizations

www.reading-travelinfo.co.uk

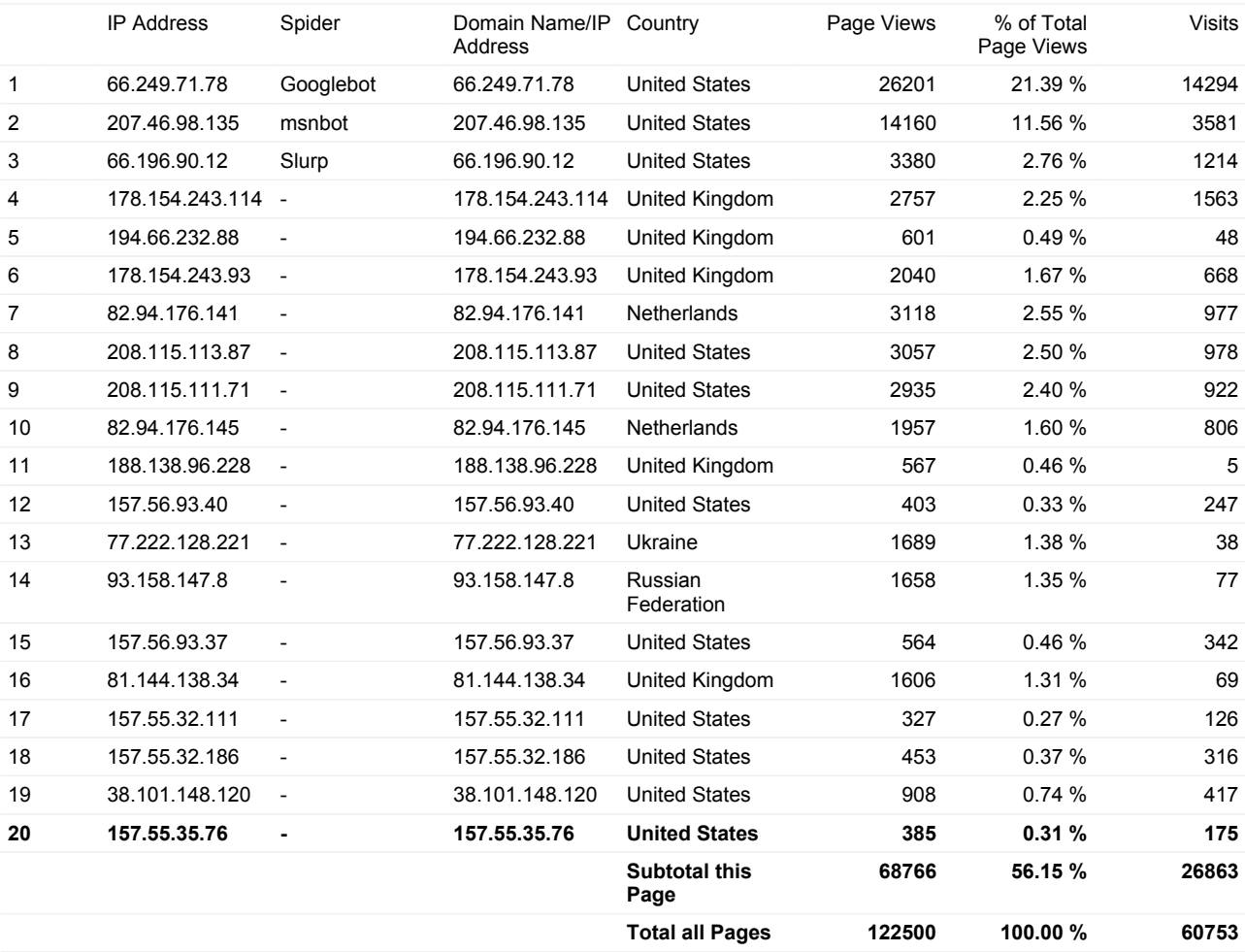
This section identifies the spider organization and its relative activity level on the site. Values shown do not include failed requests.



	Spider	Page Views	% of Total Page Views	Visits
1	-	78576	64.14 %	41626
2	Googlebot	26201	21.39 %	14294
3	msnbot	14160	11.56 %	3581
4	Slurp	3380	2.76 %	1214
5	Python-urllib	58	0.05 %	29
6	ia_archiver	124	0.10 %	8
7	Microsoft Internet Explorer	1	0.00 %	1
	Total all Pages	122500	100.00 %	60753

www.reading-travelinfo.co.uk

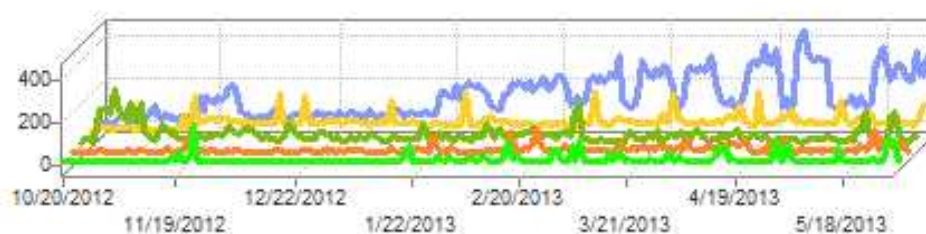
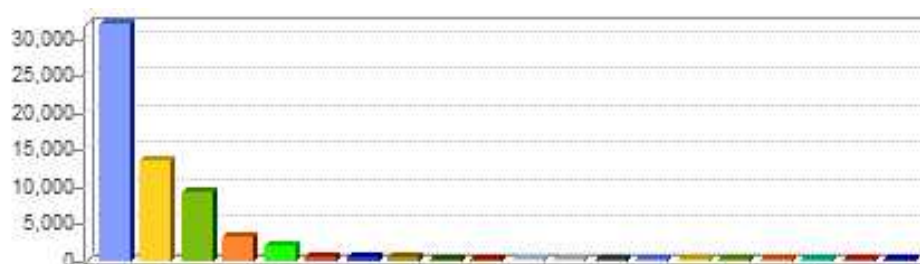
This section identifies the top spiders sorted by bandwidth. **Values shown do not include failed requests.**



Top Spider Countries

www.reading-travelinfo.co.uk

This section identifies the countries where the search engine of your visiting spiders are registered. It may not be the actual location of the search engine. Note : Domain names which cannot be found are shown as " Unknown "

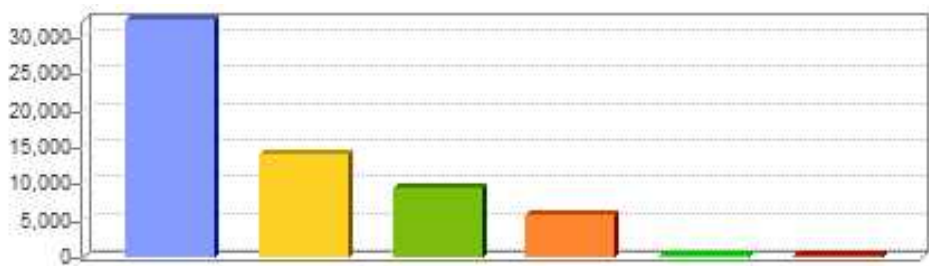


	Country	Page Views	% of Total Page Views	Visits
1	United States	67098	54.77 %	31767
2	China	12622	10.30 %	13266
3	(-)	18056	14.74 %	9209
4	United Kingdom	9413	7.68 %	3076
5	Netherlands	6979	5.70 %	1957
6	Canada	124	0.10 %	427
7	Russian Federation	3145	2.57 %	402
8	Japan	191	0.16 %	182
9	Ukraine	2124	1.73 %	93
10	Germany	839	0.68 %	52
11	Brazil	51	0.04 %	51
12	South Korea	47	0.04 %	47
13	France	520	0.42 %	37
14	Czech Republic	59	0.05 %	34
15	Norway	490	0.40 %	29
16	Finland	241	0.20 %	27
17	Bulgaria	116	0.09 %	26
18	Sweden	13	0.01 %	13
19	India	40	0.03 %	6
20	Italy	11	0.01 %	6
	Subtotal this Page	122179	99.72 %	60707
	Total all Pages	122500	100.00 %	60753

Top Spider Regions

www.reading-travelinfo.co.uk

This section displays the regions search engine spiders came from.



	Region	Page Views	% of Total Page Views	Visits
1	North America	67222	54.88 %	32194
2	Asia	16106	13.15 %	13924
3	Unknown	18056	14.74 %	9209
4	Europe	20939	17.09 %	5367
5	South America	61	0.05 %	56
6	Middle East	116	0.09 %	3
	Total all Pages	122500	100.00 %	60753

Who clicked my ads

www.reading-travelinfo.co.uk

This section shows the visitors who clicked ads at the various pay-per-click sites sorted by IP address. This report can help in combatting click fraud

No data available for this report

Suspicious ad clicks

www.reading-travelinfo.co.uk

No data available for this report

Most Downloaded Files

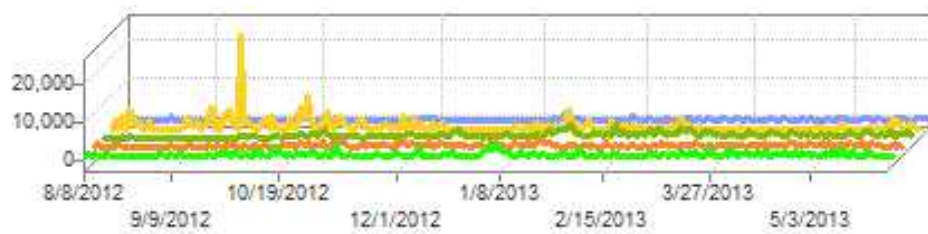
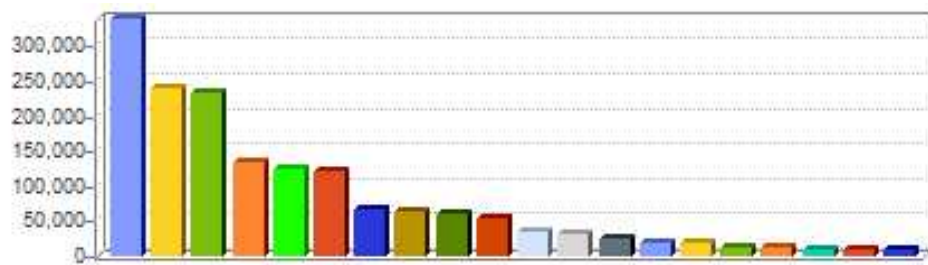
www.reading-travelinfo.co.uk

No data available for this report

Top Pages

www.reading-travelinfo.co.uk

This section identifies the most popular web site pages and how often they were accessed. Values shown do not include failed requests.



	Page	Page Views	% of Total Page Views	Entry Page	Time Spent in Seconds	Average Page Serve Time (Seconds)	Exit Page	Bandwidth
1	_</BR>_</BR>default.asp_</BR>_</BR>default.asp	336114	18.66 %	14019	20	0.280	6465	2,992.16MB
2	_</BR>_</BR>umbraco/webservices/legacyajaxcalls.	235689	13.08 %	2646	6	0.336	2565	17.09MB

	asmx/ getsecondsbefo reuserlogout_</ B></BR></ B></BR>umbraco/ webservices/ legacyajaxcalls. asmx/ getsecondsbefo reuserlogout</ a>							
3	ajax/bus.aspx	231346	12.84 %	820	24	0.551	4898	1,013.60MB
4	ajax/rss.aspx	130702	7.26 %	229	13	0.242	791	232.18MB
5	TR Live - Travel Reading Live - Home page</ BR>TR Live - Travel Reading Live - Home page</ BR>home. aspxTR Live - Travel Reading Live - Home page</ BR>TR Live - Travel Reading Live - Home page</ BR>home.aspx</ a>	122137	6.78 %	910	20	0.269	614	583.39MB
6	ajax/rail.aspx	118160	6.56 %	202	5	0.866	1909	205.46MB
7	ajax/update. aspx	63343	3.52 %	182	156	0.031	274	66.74MB
8	ajax/parking. aspx	61485	3.41 %	152	11	0.400	2064	80.65MB
9	</ BR></ BR>favicon.ico_</ B></BR></ B></BR><a href="www. reading-	57651	3.20 %	3159	22	0.137	7229	353.82MB

	travelinfo.co.uk/ favicon.ico" TARGET= "window_name >favicon.ico</ a>							
10	M4 J13 eastbound access Eastbound Roadworks</ B></BR>M4 J13 eastbound access Eastbound Roadworks</ B></BR>ajax/ highways. aspxM4 J13 eastbound access Eastbound Roadworks</ B></BR>M4 J13 eastbound access Eastbound Roadworks</ B></BR>ajax/ highways. aspx	50471	2.80 %	22	3	0.404	210	167.98MB
11	ajax/weather. aspx	32983	1.83 %	58	1	0.485	77	32.21MB
12	TR Live - Live Traffic Cameras</ BR>TR Live - Live Traffic Cameras</ BR>live-traffic- cameras. aspxTR Live - Live Traffic Cameras</ BR>TR Live - Live Traffic Cameras</ BR><a href= "www.reading- travelinfo.co.uk/ live-traffic- cameras.aspx" TARGET= "window_name	28420	1.58 %	4798	21	0.208	2170	579.03MB

	">live-traffic-cameras.aspx							
13	ajax/reset.aspx	20973	1.16 %	108	10	0.052	6	47.71MB
14	_</BR>_</BR>umbraco/webservices/treedataservice.ashx</BR>_</BR>umbraco/webservices/treedataservice.ashx	15454	0.86 %	110	1	0.407	156	32.28MB
15	TR Live - Bus Service Redirect</BR>TR Live - Bus Service Redirect</BR>bus/services/route.aspxTR Live - Bus Service Redirect</BR>TR Live - Bus Service Redirect</BR>bus/services/route.aspx	14676	0.81 %	218	3	0.171	206	291.79MB
16	logout</BR>logout</BR>umbraco/	10767	0.60 %	98	2	0.886	88	178.14MB

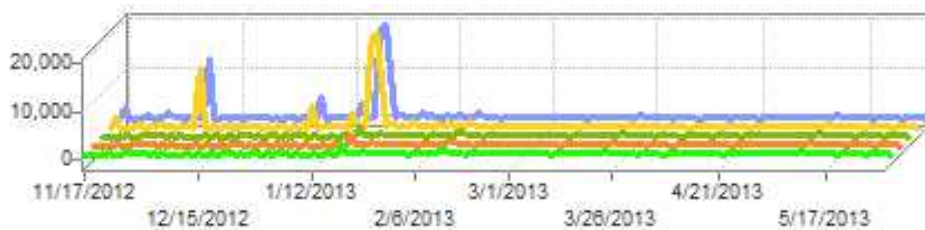
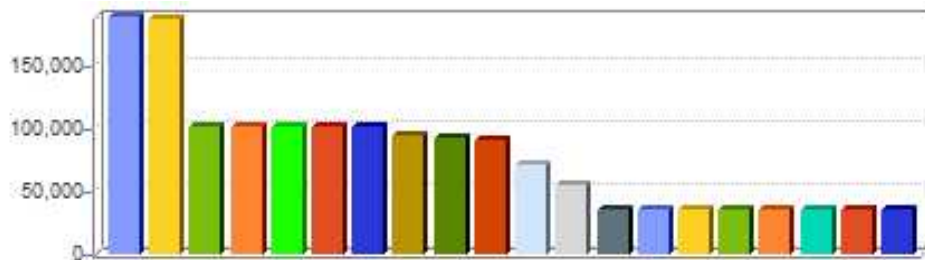
	editcontent. aspxlogout</BR>logout</BR>umbraco/editcontent.aspx							
17	TR Live - Residents' Permit Parking</BR>TR Live - Residents' Permit Parking</BR>residents-parking.aspxTR Live - Residents' Permit Parking</BR>TR Live - Residents' Permit Parking</BR>residents-parking.aspx	8386	0.47 %	2233	1	0.203	44	182.38MB
18	umbraco/ping.aspx	7993	0.44 %	17	131	0.005	29	0.75MB
19	TR Live - Live Traffic</BR>TR Live - Live Traffic</BR>live-traffic.aspxTR Live - Live Traffic</BR>TR Live - Live Traffic</BR>live-traffic.	7630	0.42 %	415	26	0.382	665	296.30MB

	aspx							
20	TR Live - Republish script</ BR>TR Live - Republish script</ BR>republish. aspxTR Live - Republish script</ BR>TR Live - Republish script</ BR>republish. aspx	6127	0.34 %	88	35	0.050	87	74.92MB
	Subtotal this Page	1560507	86.62 %	30484	511		30547	7,428.57MB
	Total all Pages	1801401	100.00 %	30484	36306770		47547	21,332.98MB

Top Images

www.reading-travelinfo.co.uk

This section shows the Images that were downloaded from your site.



	Filename	Hits	% of Total Hits	Bandwidth
1	images/common/trl_logo_2.gif	187969	5.66 %	479.00MB
2	images/common/trl_logo_1.gif	186956	5.63 %	484.47MB
3	images/common/ichivis21.png	100457	3.02 %	125.68MB
4	images/common/icmagnify21.png	100410	3.02 %	130.40MB
5	images/common/icfacebook21.png	100335	3.02 %	143.72MB
6	images/common/icemail21.png	100203	3.02 %	145.91MB
7	images/common/ictwitter21.png	100092	3.01 %	140.40MB
8	images/common/rbclogo.png	93231	2.81 %	862.83MB
9	images/common/trl_header.gif	92123	2.77 %	675.63MB
10	images/common/traveline.png	89953	2.71 %	207.19MB
11	images/common/plannarrowgobutton.png	69855	2.10 %	124.57MB
12	images/common/loading.gif	54009	1.63 %	78.42MB
13	images/common/bus16a.png	34339	1.03 %	66.48MB
14	images/common/bus6.png	34275	1.03 %	63.97MB
15	images/common/bus13.png	34255	1.03 %	65.99MB
16	images/common/bus5.png	34241	1.03 %	63.89MB
17	images/common/bus11.png	34216	1.03 %	63.65MB
18	images/common/bus14.png	34214	1.03 %	65.29MB
19	images/common/bus20a.png	34196	1.03 %	68.75MB
20	images/common/bus9.png	34192	1.03 %	62.37MB
Subtotal this Page		1549521	46.64 %	4,118.62MB

Total all Pages	3321213	100.00 %	26,919.93MB
------------------------	----------------	-----------------	--------------------

External Clicks

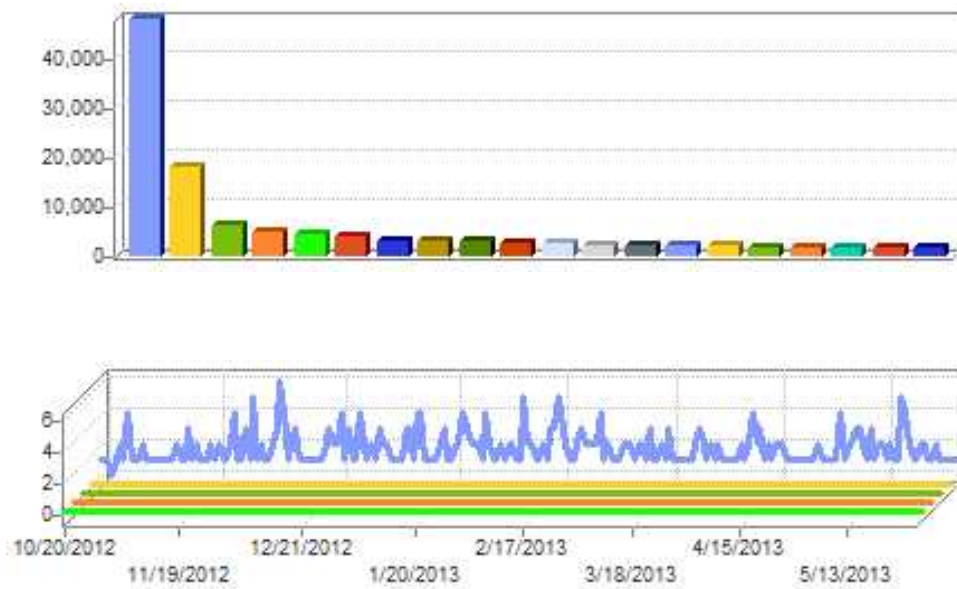
www.reading-travelinfo.co.uk

No data available for this report

Top Spider Pages

www.reading-travelinfo.co.uk

This section identifies the most popular web site pages accessed by robots (Spiders) and how often they were accessed. Values shown do not include failed requests.



	Page	Page Views	% of Total Page Views	Exit Page
1	TR Live - Disabled Parking</BR>TR Live - Disabled Parking</BR>TR Live - Disabled Parking</BR>TR Live - Disabled Parking</BR>	47673	38.79 %	14570
2	TR Live - Bus Service X25</BR>TR Live - Bus Service X25</BR>bus/servicesTR Live - Bus Service X25</BR>TR Live - Bus Service X25</BR>bus/services	17504	14.24 %	1153
3	TR Live - Cycle Route R1</BR>TR Live - Cycle Route R1</BR>cycling/routesTR Live - Cycle Route R1</BR>TR Live - Cycle Route R1</BR>cycling/	5949	4.84 %	63

	routes			
4	ajax	4426	3.60 %	8951
5	TR Live - John Madejski Academy</BR>TR Live - John Madejski Academy</BR>educationTR Live - John Madejski Academy</BR>TR Live - John Madejski Academy</BR>education	3896	3.17 %	57
6	TR Live - Bus Network Map</BR>TR Live - Bus Network Map</BR>busTR Live - Bus Network Map</BR>TR Live - Bus Network Map</BR>bus	3597	2.93 %	493
7	TR Live - Tilehurst Village Centre</BR>TR Live - Tilehurst Village Centre</BR>shoppingTR Live - Tilehurst Village Centre</BR>TR Live - Tilehurst Village Centre</BR>shopping	2643	2.15 %	86
8	TR Live - London Irish Rugby Club</BR>TR Live - London Irish Rugby Club</BR>sportTR Live - London Irish Rugby Club</BR>TR Live - London Irish Rugby Club</BR>sport	2634	2.14 %	50
9	TR Live - Christchurch Meadows</BR>TR Live - Christchurch Meadows</BR>parksTR Live - Christchurch Meadows</BR>TR Live - Christchurch Meadows</BR>parks	2618	2.13 %	26
10	TR Live - Leisure Rides</BR>TR Live - Leisure Rides</BR>cyclingTR Live - Leisure Rides</BR>TR Live - Leisure Rides</BR>	2279	1.85 %	245

	BR>cycling			
11	TR Live - Understanding the Contravention Code</BR>TR Live - Understanding the Contravention Code</BR>parking-penaltiesTR Live - Understanding the Contravention Code</BR>TR Live - Understanding the Contravention Code</BR>parking-penalties	2086	1.70 %	128
12	TR Live - Thames Valley Police, Loddon Valley Station</BR>TR Live - Thames Valley Police, Loddon Valley Station</BR>public-servicesTR Live - Thames Valley Police, Loddon Valley Station</BR>TR Live - Thames Valley Police, Loddon Valley Station</BR>public-services	1947	1.58 %	51
13	TR Live - I've got a Penalty Charge Notice - what happens now?</BR>TR Live - I've got a Penalty Charge Notice - what happens now?</BR>bus-lane-enforcementTR Live - I've got a Penalty Charge Notice - what happens now?</BR>TR Live - I've got a Penalty Charge Notice - what happens now?</BR>bus-lane-enforcement	1906	1.55 %	179
14	TR Live - Data protection information</BR>TR Live - Data protection information</BR>residents-parkingTR Live - Data protection information</BR>TR Live - Data protection information</BR>residents-parking	1799	1.46 %	470
15	TR Live - Cardiff Road	1644	1.34 %	22

	Industrial Area</BR>TR Live - Cardiff Road Industrial Area</BR>businessTR Live - Cardiff Road Industrial Area</BR>TR Live - Cardiff Road Industrial Area</BR>business			
16	TR Live - Reading West Station</BR>TR Live - Reading West Station</BR>rail/stationsTR Live - Reading West Station</BR>TR Live - Reading West Station</BR>rail/stations	1528	1.24 %	61
17	TR Live - David Lloyd Reading</BR>TR Live - David Lloyd Reading</BR>leisureTR Live - David Lloyd Reading</BR>TR Live - David Lloyd Reading</BR>leisure	1456	1.18 %	15
18	TR Live - Reading Station Upgrade</BR>TR Live - Reading Station Upgrade</BR>railTR Live - Reading Station Upgrade</BR>TR Live - Reading Station Upgrade</BR>rail	1431	1.16 %	39
19	TR Live - Showcase Cinemas</BR>TR Live - Showcase Cinemas</BR>entertainmentTR Live - Showcase Cinemas</BR>TR Live - Showcase Cinemas</BR>entertainment	1352	1.10 %	30
20	TR Live - Christmas Lights</BR>TR Live - Christmas Lights</BR>eventsTR Live - Christmas Lights</BR>TR Live - Christmas Lights</BR><a href="www.reading-travelinfo.co.	1214	0.99 %	21

uk/events" TARGET=
"window_name">events

Subtotal this Page	109582	89.14 %	26710
Total all Pages	122894	100.00 %	28869

	Page	Page Views	% of Total Page Views	Entry Page	Time Spent in Seconds	Exit Page	Bandwidth
1	 </BR>_</BR>default.asp</BR>_</BR>default.asp	336114	18.66 %	14019	6960428	6465	2,992.16MB
2	 </BR>_</BR>umbraco/webservices/legacyajaxcalls.asmx/getsecondsbefore userlogout </BR>	235689	13.08 %	2646	1492953	2565	17.09MB

	BR>_</BR>umbraco/webservices/legacyajaxcalls.aspx/getsecondsbeforeuserlogout						
3	ajax/bus.aspx	231346	12.84 %	820	5777670	4898	1,013.60MB
4	ajax/rss.aspx	130702	7.26 %	229	1699270	791	232.18MB
5	TR Live - Travel Reading Live - Home page</BR>TR Live - Travel Reading Live - Home page</BR>home.aspxTR Live - Travel Reading Live - Home page</BR>home.aspx	122137	6.78 %	910	2498519	614	583.39MB
6	ajax/rail.aspx	118160	6.56 %	202	666187	1909	205.46MB
7	ajax/update.aspx	63343	3.52 %	182	9931874	274	66.74MB
8	ajax/parking.aspx	61485	3.41 %	152	730074	2064	80.65MB
9	_</BR>_</BR>favicon.ico</BR>_</BR>favicon.ico	57651	3.20 %	3159	1302924	7229	353.82MB
10	M4 J13 eastbound access Eastbound Roadworks</BR>M4 J13	50471	2.80 %	22	171282	210	167.98MB

	eastbound access Eastbound Roadworks</ BR> ajax/highways. aspxM4 J13 eastbound access Eastbound Roadworks</ BR>M4 J13 eastbound access Eastbound Roadworks</ BR> ajax/highways. aspx						
11	ajax/weather.aspx	32983	1.83 %	58	35182	77	32.21MB
12	TR Live - Live Traffic Cameras</ B></BR>TR Live - Live Traffic Cameras</ BR>li ve-traffic- cameras.aspxTR Live - Live Traffic Cameras</ BR>TR Live - Live Traffic Cameras</ B></BR>li ve-traffic- cameras.aspx</ a>	28420	1.58 %	4798	622375	2170	579.03MB
13	ajax/reset.aspx	20973	1.16 %	108	228104	6	47.71MB
14	_</ BR>_</ BR> umbraco/ webservices/ treedataservice. ashx_</ BR>_</ BR><a href= "www.reading- travelinfo.co.uk/ umbraco/ webservices/	15454	0.86 %	110	27658	156	32.28MB

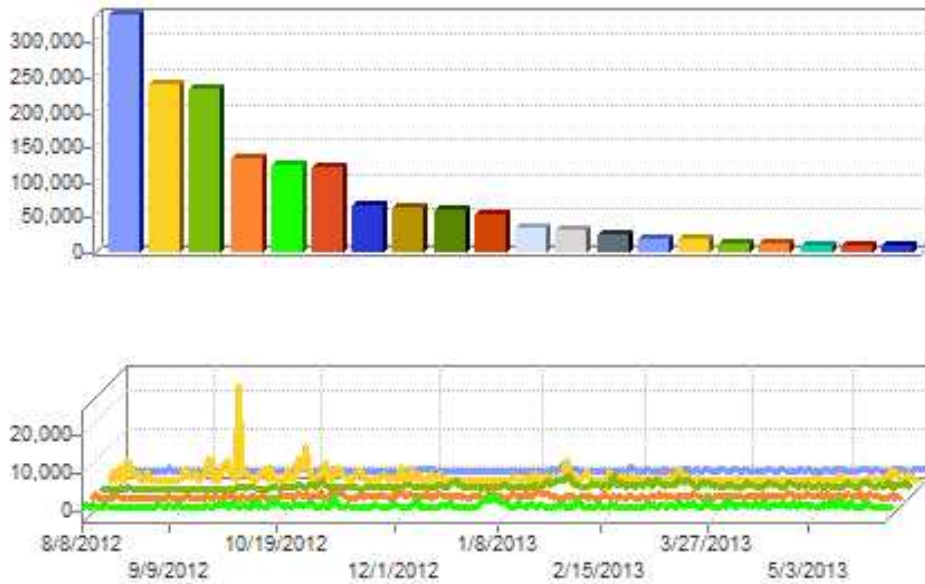
	treedataservice.ashx" TARGET="window_name">umbraco/webservices/treedataservice.ashx						
15	TR Live - Bus Service Redirect</BR>TR Live - Bus Service Redirect</BR>bus/services/route.aspxTR Live - Bus Service Redirect</BR>TR Live - Bus Service Redirect</BR>bus/services/route.aspx	14676	0.81 %	218	51008	206	291.79MB
16	logout</BR>logout</BR>umbraco/editcontent.aspxlogout</BR>logout</BR>umbraco/editcontent.aspx	10767	0.60 %	98	23010	88	178.14MB
17	TR Live - Residents' Permit Parking</BR>TR Live - Residents' Permit Parking</BR>residents-parking.aspxTR Live - Residents' Permit Parking</BR>TR Live - Residents' Permit Parking</BR><a href="	8386	0.47 %	2233	15088	44	182.38MB

	"www.reading-travelinfo.co.uk/residents-parking.aspx" TARGET="window_name">residents-parking.aspx						
18	umbraco/ping.aspx	7993	0.44 %	17	1049433	29	0.75MB
19	TR Live - Live Traffic</BR>TR Live - Live Traffic</BR>live-traffic.aspxTR Live - Live Traffic</BR>TR Live - Live Traffic</BR>live-traffic.aspx	7630	0.42 %	415	199028	665	296.30MB
20	TR Live - Republish script</BR>TR Live - Republish script</BR>republish.aspxTR Live - Republish script</BR>TR Live - Republish script</BR>republish.aspx	6127	0.34 %	88	220448	87	74.92MB
	Subtotal this Page	1560507	86.62 %	30484	33702515	30547	7,428.57MB
	Total all Pages	1801401	100.00 %	30484	36306770	47547	21,332.98MB

Entry Pages Bounce Rate

www.reading-travelinfo.co.uk

This section shows where users entered the site. Values shown do not include failed downloads.



	Page/File name	Page Views	% of Total Page Views	Visits Bounced	Bounce Rate
1	_</BR>_</BR>default.asp_</BR>_</BR>default.asp	336114	18.66 %	6465	1.92 %
2	_</BR>_</BR>umbraco/webservices/legacyajaxcalls.aspx/getsecondsbeforeuserlogout_</BR>_</BR>umbraco/webservices/legacyajaxcalls.aspx/getsecondsbeforeuserlogout	235689	13.08 %	2565	1.09 %
3	ajax/bus.aspx	231346	12.84 %	4898	2.12 %
4	ajax/rss.aspx	130702	7.26 %	791	0.61 %

5	TR Live - Travel Reading Live - Home page</BR>TR Live - Travel Reading Live - Home page</BR>home.aspxTR Live - Travel Reading Live - Home page</BR>TR Live - Travel Reading Live - Home page</BR>home.aspx	122137	6.78 %	614	0.50 %
6	ajax/rail.aspx	118160	6.56 %	1909	1.62 %
7	ajax/update.aspx	63343	3.52 %	274	0.43 %
8	ajax/parking.aspx	61485	3.41 %	2064	3.36 %
9	_</BR>_</BR>favicon.ico</BR>_</BR>favicon.ico	57651	3.20 %	7229	12.54 %
10	M4 J13 eastbound access Eastbound Roadworks</BR>M4 J13 eastbound access Eastbound Roadworks</BR>ajax/highways.aspxM4 J13 eastbound access Eastbound Roadworks</BR>M4 J13 eastbound access Eastbound Roadworks</BR>ajax/highways.aspx	50471	2.80 %	210	0.42 %
11	ajax/weather.aspx	32983	1.83 %	77	0.23 %
12	TR Live - Live Traffic Cameras</BR>TR Live - Live Traffic Cameras</BR>live-traffic-cameras.aspxTR Live - Live Traffic Cameras</BR>TR Live - Live Traffic Cameras</BR>live-traffic-cameras.aspx	28420	1.58 %	2170	7.64 %

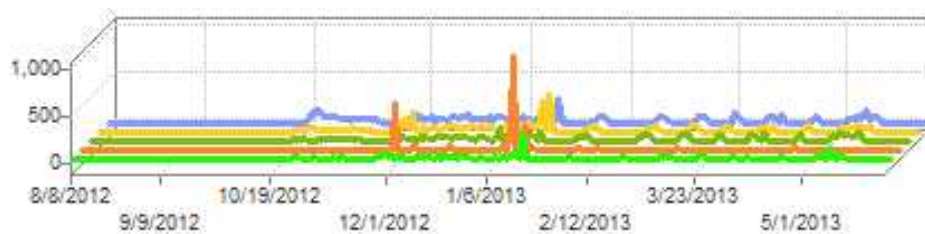
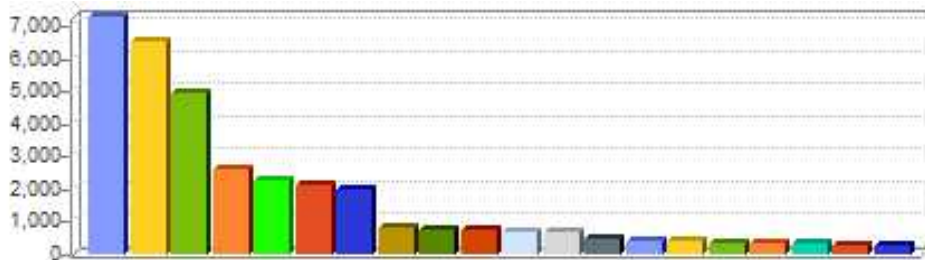
13	ajax/reset.aspx	20973	1.16 %	6	0.03 %
14	_</BR>_</BR>umbraco/webservices/treedataservice.ashx_</BR>_</BR>umbraco/webservices/treedataservice.ashx	15454	0.86 %	156	1.01 %
15	TR Live - Bus Service Redirect</BR>TR Live - Bus Service Redirect</BR>bus/services/route.aspxTR Live - Bus Service Redirect</BR>TR Live - Bus Service Redirect</BR>bus/services/route.aspx	14676	0.81 %	206	1.40 %
16	logout</BR>logout</BR>umbraco/editcontent.aspxlogout</BR>logout</BR>umbraco/editcontent.aspx	10767	0.60 %	88	0.82 %
17	TR Live - Residents' Permit Parking</BR>TR Live - Residents' Permit Parking</BR>resident s-parking.aspxTR Live - Residents' Permit Parking</BR>TR Live - Residents' Permit Parking</BR>resident s-parking.aspx	8386	0.47 %	44	0.52 %
18	umbraco/ping.aspx	7993	0.44 %	29	0.36 %
19	TR Live - Live	7630	0.42 %	665	8.72 %

	Traffic</BR>TR Live - Live Traffic</BR>live- traffic.aspxTR Live - Live Traffic</BR>TR Live - Live Traffic</BR>live- traffic.aspx				
20	TR Live - Republish script</BR>TR Live - Republish script</ BR>republ ish.aspxTR Live - Republish script</ BR>TR Live - Republish script</BR>republ ish.aspx	6127	0.34 %	87	1.42 %
	Subtotal this Page	1560507	86.62 %	30547	46.76 %
	Total all Pages	1801401	100.00 %	47547	100.00 %

Top Exit Pages

www.reading-travelinfo.co.uk

This section shows where users left the site. Values shown do not include failed downloads.



	Page/Filename	Visits	% of Total Visits	Bandwidth
1	 </BR> </BR>favicon.ico </BR> </BR>favicon.ico	7229	15.20 %	270.21MB
2	 </BR> </BR>default.asp </BR> </BR>default.asp	6465	13.60 %	2,036.42MB
3	ajax/bus.aspx	4898	10.30 %	813.24MB
4	 </BR> </BR>umbraco/webservices/legacyajacalls.aspx/getsecondsbeforeuserlogout </BR> </BR>umbraco/webservices/legacyajacalls.aspx/getsecondsbeforeuserlogout	2565	5.39 %	12.00MB

	getsecondsbeforeuserlogout" TARGET= "window_name">umbraco/ webservices/legacyajacalls. asmx/ getsecondsbeforeuserlogout</ a>			
5	TR Live - Live Traffic Cameras</BR>TR Live - Live Traffic Cameras</ BR>live-traffic- cameras.aspxTR Live - Live Traffic Cameras</BR>TR Live - Live Traffic Cameras</ B></BR>live-traffic- cameras.aspx	2170	4.56 %	410.99MB
6	ajax/parking.aspx	2064	4.34 %	59.05MB
7	ajax/rail.aspx	1909	4.01 %	146.31MB
8	ajax/rss.aspx	791	1.66 %	178.37MB
9	media/38363/ resident_permit_application_for m.pdf	704	1.48 %	151.84MB
10	TR Live - Live Traffic</ B></BR>TR Live - Live Traffic</BR>live-traffic. aspxTR Live - Live Traffic</ B></BR>TR Live - Live Traffic</BR>live-traffic. aspx	665	1.40 %	177.78MB
11	TR Live - Travel Reading Live - Home page</ BR>TR Live - Travel Reading Live - Home page</ BR>home.aspxTR Live - Travel Reading Live - Home page</BR>TR Live - Travel Reading Live - Home page</BR>home.aspx</ a>	614	1.29 %	371.81MB
12	media/38372/ visitor_permit_application_form .pdf	598	1.26 %	109.43MB
13	TR Live - Temporary Permits</BR>TR Live - Temporary Permits</ BR>residents- parking/temporary-permits. aspxTR Live - Temporary Permits</BR>TR Live - Temporary Permits</	407	0.86 %	32.56MB

	BR>residents-parking/temporary-permits.aspx			
14	Reading Travel Info</BR>Reading Travel Info</BR>rss.aspxReading Travel Info</BR>Reading Travel Info</BR>rss.aspx	370	0.78 %	1.00MB
15	media/42087/parkride_apr2011_v2.pdf	337	0.71 %	118.80MB
16	ajax/update.aspx	274	0.58 %	66.74MB
17	media/70149/rbc_cf_application_form__a4-oct12-web_.pdf	255	0.54 %	2,154.61MB
18	TR Live - Nighttrack Services</BR>TR Live - Nighttrack Services</BR>bus/nighttrack-services.aspxTR Live - Nighttrack Services</BR>TR Live - Nighttrack Services</BR>bus/nighttrack-services.aspx	253	0.53 %	33.66MB
19	media/42075/fasttrack500_apr2011_v2.pdf	219	0.46 %	72.96MB
20	_</BR>_</BR>bus/park-ride/madejski-stadium.aspx_</BR>_</BR>bus/park-ride/madejski-stadium.aspx	217	0.46 %	25.06MB
Subtotal this Page		33004	69.41 %	7,242.84MB
Total all Pages		47547	100.00 %	12,950.21MB

Top Audio Files

www.reading-travelinfo.co.uk

No data available for this report

Top Video Files

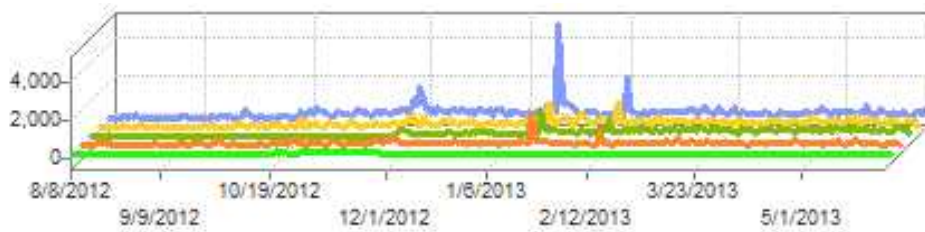
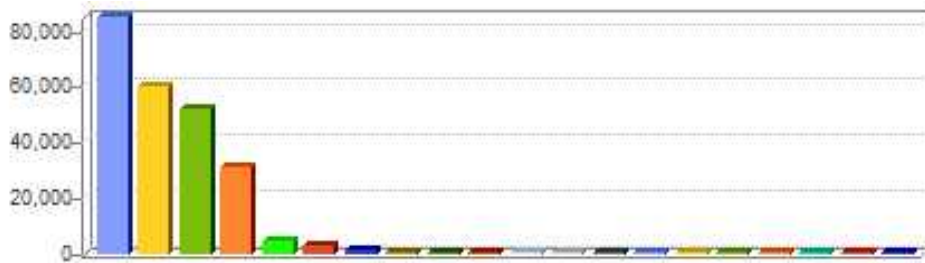
www.reading-travelinfo.co.uk

No data available for this report

Top Unknown Files

www.reading-travelinfo.co.uk

This section shows the files of unknown type that were downloaded from your site. A file is classified as unknown if the extension is not listed as a page, file, audio, video or image file.



	Filename	Hits	% of Total Hits	Bandwidth
1	scriptresource.axd	84553	36.01 %	1,128.08MB
2	css/fonts/myriadpro-semibold-webfont.eot	59473	25.33 %	1,255.47MB
3	css/fonts/myriadpro-semibold-webfont.ttf	51423	21.90 %	1,656.91MB
4	webresource.axd	30967	13.19 %	508.14MB
5	css/fonts/myriadpro-semibold-webfont.woff	3799	1.62 %	36.00MB
6	dependencyhandler.axd	2503	1.07 %	152.90MB
7	umbraco/dependencyhandler.axd	970	0.41 %	6.78MB
8	css/fonts/myriadpro-semibold-webfont.svg	258	0.11 %	19.86MB
9	umbraco/dialogs/dependencyhandler.axd	173	0.07 %	0.15MB
10	css/fonts/tegyreheros-regular-webfont.eot	143	0.06 %	2.71MB
11	css/fonts/tegyreheros-regular-webfont.ttf	95	0.04 %	3.15MB
12	umbraco/plugins/tinymce3/dependencyhandler.axd	83	0.04 %	0.16MB
13	media/90282/every_change_counts_business_itinerary.docx	77	0.03 %	3.09MB
14	css/fonts/tegyreheros-regular-webfont.woff	70	0.03 %	0.00MB
15	umbraco/users/dependencyhandler.axd	43	0.02 %	0.35MB

16	umbraco/settings/ dependencyhandler.axd	34	0.01 %	0.12MB
17	media/90286/ access_restrictionssingler3a.ai	29	0.01 %	57.97MB
18	umbraco/developer/xslt/ dependencyhandler.axd	28	0.01 %	0.11MB
19	umbraco/developer/python/ dependencyhandler.axd	15	0.01 %	0.11MB
20	umbraco/settings/stylesheet/ dependencyhandler.axd	14	0.01 %	0.00MB
Subtotal this Page		234750	99.98 %	4,832.06MB
Total all Pages		234797	100.00 %	4,833.96MB

Single Access Pages

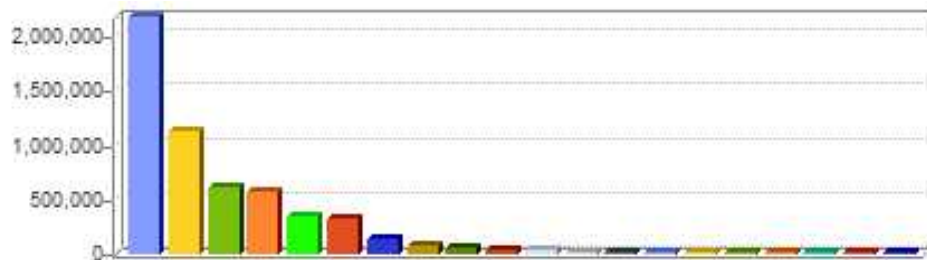
www.reading-travelinfo.co.uk

No data available for this report

Most Downloaded File Types

www.reading-travelinfo.co.uk

This section shows the different file types that were downloaded from the site. Values shown do not include failed requests.

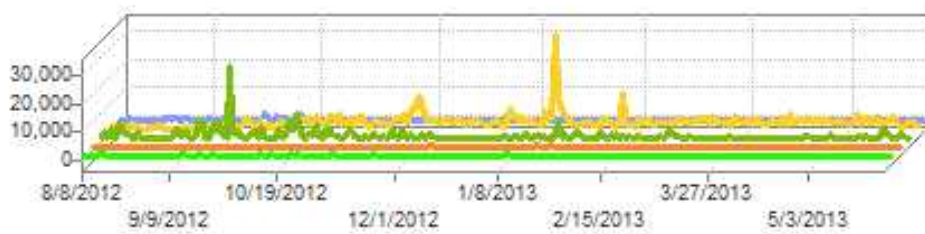
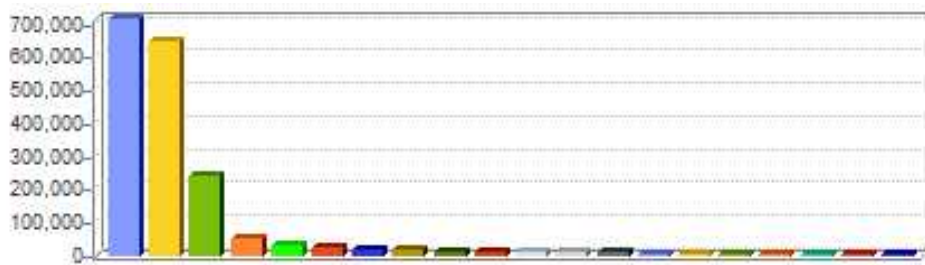


	File types	Page Views	% of Total Page Views	Bandwidth
1	.png	2170460	40.51 %	6,071.29MB
2	.aspx	1118026	20.87 %	9,761.60MB
3	.jpg	598781	11.18 %	16,855.79MB
4	.gif	549622	10.26 %	1,774.33MB
5	.asp	336114	6.27 %	2,992.16MB
6	.htm	315869	5.90 %	439.39MB
7	.axd	119418	2.23 %	1,796.91MB
8	.eot	59616	1.11 %	1,258.17MB
9	.ttf	51518	0.96 %	1,660.07MB
10	.ashx	16009	0.30 %	32.38MB
11	.pdf	15126	0.28 %	9,767.26MB
12	.woff	3869	0.07 %	36.00MB
13	.bmp	1838	0.03 %	2,190.30MB
14	.jpeg	509	0.01 %	28.15MB
15	.svg	262	0.00 %	20.11MB
16	.doc	188	0.00 %	32.17MB
17	.docx	77	0.00 %	3.09MB
18	.swf	45	0.00 %	0.42MB
19	.ai	29	0.00 %	57.97MB
20	.html	24	0.00 %	0.00MB
Subtotal this Page		5357400	99.98 %	54,777.58MB
Total all Pages		5357411	100.00 %	54,779.28MB

Most Accessed Directories

www.reading-travelinfo.co.uk

This section shows the most accessed directories on your site. A directory is accessed when any type of file is requested from the directory.



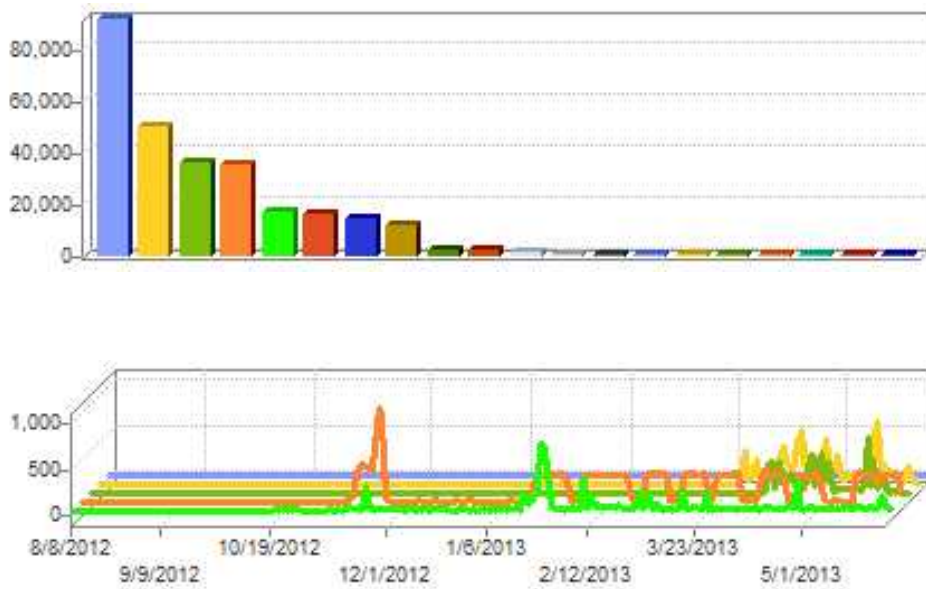
	Directory	Accesses	% of Total Accesses	Bandwidth
1	ajax	710731	13.27 %	1,847.62MB
2		644335	14.23 %	8,721.56MB
3	umbraco/webservices/legacyajaxcalls.aspx/getsecondsbeforeuserlogout	235689	4.40 %	17.09MB
4	bus/services	45134	0.84 %	1,218.69MB
5	umbraco	26737	0.52 %	236.14MB
6	bus	18382	0.34 %	494.71MB
7	umbraco/webservices	16005	0.30 %	32.38MB
8	residents-parking	10779	0.20 %	254.19MB
9	cycling	7131	0.13 %	159.73MB
10	park-and-ride	4028	0.08 %	108.83MB
11	umbraco/webservices/legacyajaxcalls.aspx/js	3899	0.07 %	3.15MB
12	umbraco/webservices/treeclientservice.aspx/getinitapptreedata	3875	0.07 %	1.15MB
13	umbraco/plugins/tinymce3	3536	0.07 %	260.12MB
14	umbraco/ucomponents/items/range	3128	0.06 %	0.15MB
15	bus-lane-enforcement	3100	0.06 %	90.91MB
16	cycling/routes	2822	0.05 %	132.80MB
17	residents-parking/applying-for-permits	2715	0.05 %	86.17MB
18	bus/park-ride	2594	0.05 %	48.37MB
19	bus/community_links	2114	0.04 %	43.22MB

20	parking-penalties	2082	0.04 %	80.38MB
	Subtotal this Page	1748816	34.87 %	13,837.36MB
	Total all Pages	1801401	100.00 %	54,779.28MB

Top Browsers

www.reading-travelinfo.co.uk

This section shows the browsers which are used to access your Web Site from the Intranet or Internet. This information is only available if present in the log files.

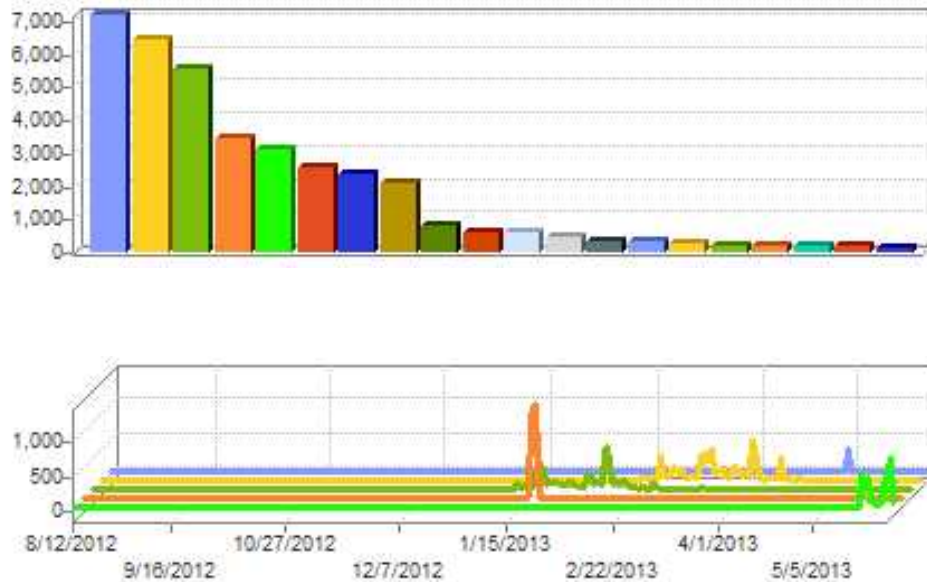


	Browser	Visits	% of Total Visits	Bandwidth
1	Microsoft Internet Explorer	91512	32.95 %	20,700.34MB
2	Google Chrome	49838	17.94 %	7,821.30MB
3	Firefox	36134	13.01 %	6,227.69MB
4	Unknown	34573	12.45 %	869.14MB
5	Mozilla	16620	5.98 %	2,820.85MB
6	iPhone	15270	5.50 %	3,321.45MB
7	iPad	13611	4.90 %	4,538.70MB
8	Android	11701	4.21 %	3,029.78MB
9	Mozilla/5.0	1946	0.70 %	184.96MB
10	Opera	1418	0.51 %	398.05MB
11	Feedfetcher-Google;	483	0.17 %	0.73MB
12	Google	413	0.15 %	32.09MB
13	Phone type device	370	0.13 %	112.64MB
14	linkdex	350	0.13 %	16.55MB
15	Java	321	0.12 %	38.15MB
16	facebookexternalhit	299	0.11 %	8.80MB
17	Safari	244	0.09 %	75.24MB
18	Microsoft URL Control	239	0.09 %	56.39MB
19	curl	166	0.06 %	6.92MB
20	Netscape	164	0.06 %	25.45MB
	Subtotal this Page	275672	99.26 %	50,285.22MB
	Total all Pages	277742	100.00 %	50,489.25MB

Firefox Browsers

www.reading-travelinfo.co.uk

This section shows the different Firefox browsers that were used by visitors to access your site.

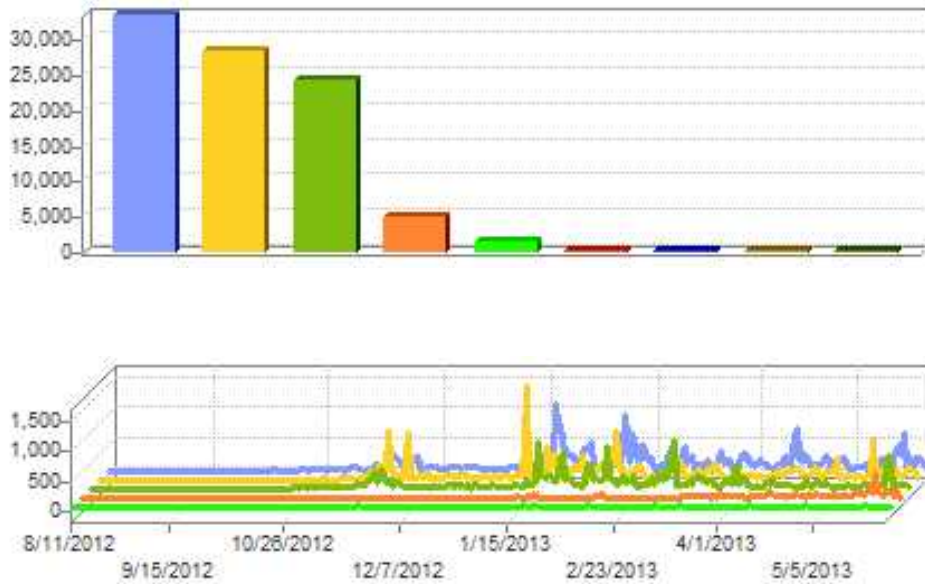


	Browser	Visits	% of Total Visits	Bandwidth
1	Firefox /20.x	7122	19.71 %	1,229.09MB
2	Firefox /19.x	6384	17.67 %	1,200.74MB
3	Firefox /18.x	5509	15.25 %	1,105.74MB
4	Firefox /13.x	3369	9.32 %	93.56MB
5	Firefox /21.x	3068	8.49 %	257.21MB
6	Firefox /3..x	2495	6.90 %	181.71MB
7	Firefox /16.x	2275	6.30 %	559.11MB
8	Firefox /17.x	2066	5.72 %	869.09MB
9	Firefox /5..x	745	2.06 %	53.54MB
10	Firefox /10.x	562	1.56 %	117.92MB
11	Firefox /15.x	513	1.42 %	89.08MB
12	Firefox /14.x	424	1.17 %	98.63MB
13	Firefox /12.x	295	0.82 %	81.46MB
14	Firefox /1..x	254	0.70 %	30.28MB
15	Firefox /.x	184	0.51 %	30.59MB
16	Firefox /11.x	157	0.43 %	50.17MB
17	Firefox /6..x	121	0.33 %	52.84MB
18	Firefox /3.x	109	0.30 %	13.64MB
19	Firefox /8..x	102	0.28 %	18.27MB
20	Firefox /9..x	101	0.28 %	23.97MB
	Subtotal this Page	35855	99.22 %	6,156.63MB
	Total all Pages	36134	100.00 %	6,227.69MB

Internet Explorer Browsers

www.reading-travelinfo.co.uk

This section shows the different Internet Explorer browsers that were used by visitors to access your site.

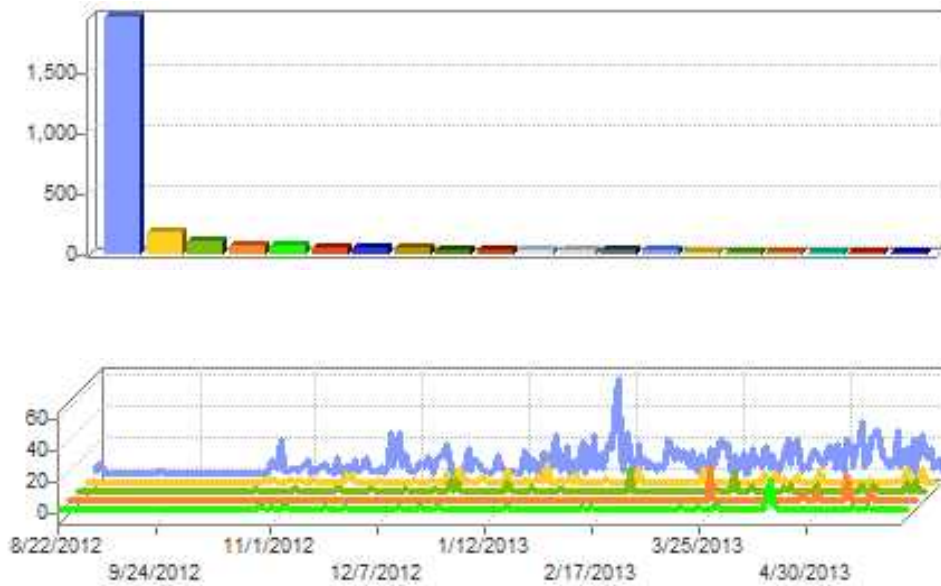


	Browser	Visits	% of Total Visits	Bandwidth
1	Microsoft Internet Explorer 8.x	33233	36.32 %	7,055.06MB
2	Microsoft Internet Explorer 7.x	28036	30.64 %	5,120.59MB
3	Microsoft Internet Explorer 9.x	24158	26.40 %	6,869.35MB
4	Microsoft Internet Explorer 1.x	4721	5.16 %	1,385.81MB
5	Microsoft Internet Explorer 6.x	1273	1.39 %	259.48MB
6	Microsoft Internet Explorer 5.x	67	0.07 %	6.24MB
7	Microsoft Internet Explorer ..x	19	0.02 %	3.58MB
8	Microsoft Internet Explorer 4.x	3	0.00 %	0.14MB
9	Microsoft Internet Explorer .x	2	0.00 %	0.09MB
	Total all Pages	91512	100.00 %	20,700.34MB

Wap Devices

www.reading-travelinfo.co.uk

This report displays the WAP Devices



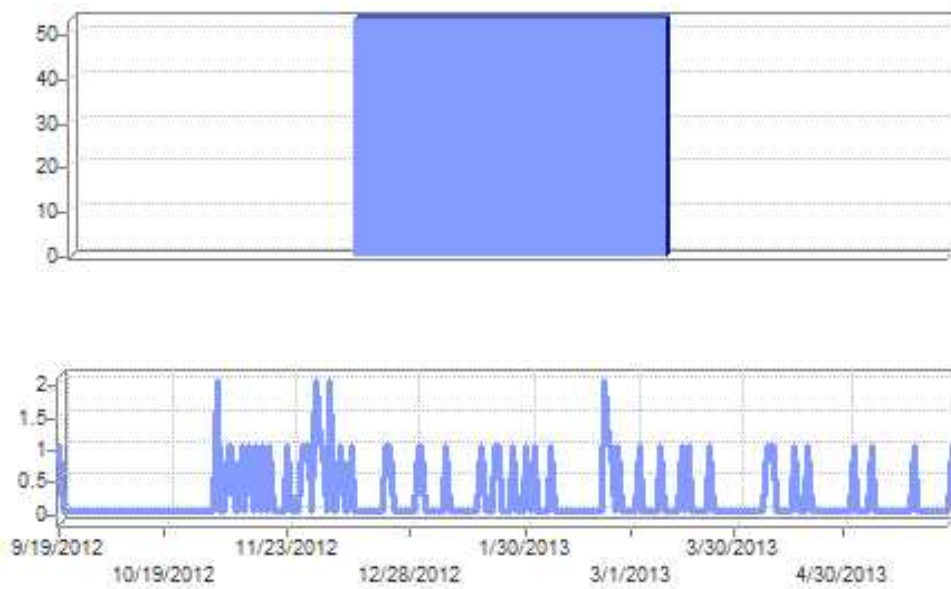
	Browser	Visits	% of Total Visits	Bandwidth
1	Mozilla/5.0 (BlackBerry	1946	73.02 %	184.96MB
2	BlackBerry8520/5.0.0.681 Profile/MIDP-2.	161	6.04 %	7.58MB
3	BlackBerry8520/5.0.0.1036 Profile/MIDP-2	96	3.60 %	4.76MB
4	Nokia201	55	2.06 %	14.11MB
5	NokiaN8-00	54	2.03 %	8.49MB
6	NokiaC3-00	38	1.43 %	5.80MB
7	BlackBerry9300/5.0.0.977 Profile/MIDP-2.	36	1.35 %	4.82MB
8	BlackBerry9700/5.0.0.593 Profile/MIDP-2.	36	1.35 %	2.75MB
9	BlackBerry8520/5.0.0.592 Profile/MIDP-2.	25	0.94 %	1.17MB
10	BlackBerry8520/4.6.1.314 Profile/MIDP-2.	23	0.86 %	1.24MB
11	BlackBerry9105/5.0.0.972 Profile/MIDP-2.	16	0.60 %	1.69MB
12	BlackBerry9300/5.0.0.832 Profile/MIDP-2.	14	0.53 %	0.79MB
13	Nokia114	12	0.45 %	0.34MB
14	BlackBerry8900/5.0.0.681 Profile/MIDP-2.	10	0.38 %	0.20MB
15	BlackBerry9700/5.0.0.979 Profile/MIDP-2.	7	0.26 %	0.09MB
16	NokiaE5-00	7	0.26 %	4.35MB
17	BlackBerry8900/4.6.1.199 Profile/MIDP-2.	6	0.23 %	0.33MB

18	BlackBerry9700/5.0.0.743 Profile/MIDP-2.	6	0.23 %	1.26MB
19	Nokia5230	6	0.23 %	1.22MB
20	NokiaX3-02	6	0.23 %	1.84MB
	Subtotal this Page	2560	96.08 %	247.79MB
	Total all Pages	2665	100.00 %	272.85MB

Download Managers

www.reading-travelinfo.co.uk

This section shows Download Managers that visited your site. A Download Manager is a piece of software that assists in the download of files from a site, for example GetRight, Go!Zilla etc.

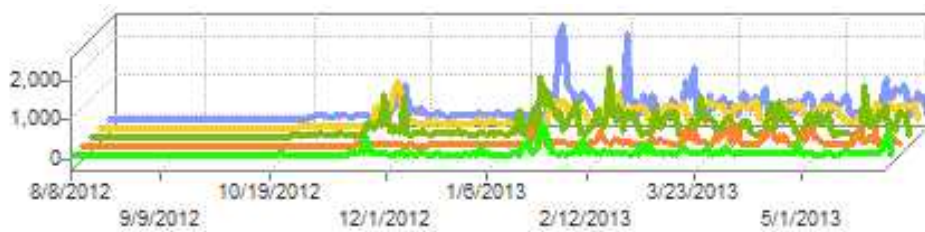
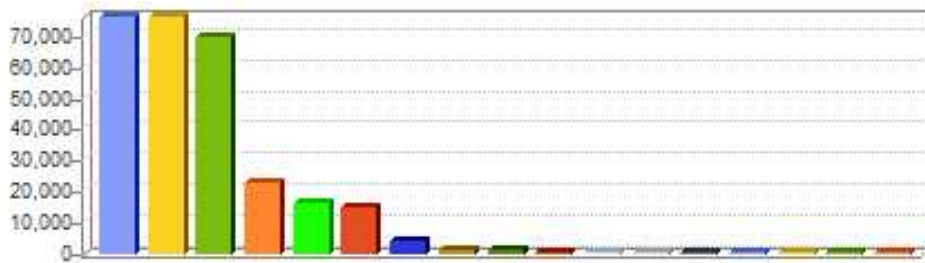


	Browser	Visits	% of Total Visits	Bandwidth
1	Wget 1.x	53	100.00 %	14.14MB
	Total all Pages	53	100.00 %	14.14MB

Top Platforms

www.reading-travelinfo.co.uk

This section shows the operating systems that are used by visitors to your site.



	Platform	Visits	% of Total Visits	Bandwidth
1	Windows 7	75574	27.21 %	16,927.21MB
2	Unknown	75265	27.10 %	9,483.91MB
3	Windows XP	69143	24.89 %	11,750.26MB
4	Windows Vista	22528	8.11 %	4,273.91MB
5	Macintosh	15820	5.70 %	3,160.60MB
6	Linux	14554	5.24 %	3,843.93MB
7	Windows Server 2003; Windows XP x64 Edition	3551	1.28 %	710.21MB
8	OS/2	557	0.20 %	161.77MB
9	Windows NT	404	0.15 %	119.12MB
10	Windows 2000	272	0.10 %	27.10MB
11	SunOS	35	0.01 %	28.33MB
12	Windows 98	19	0.01 %	1.53MB
13	Windows 3.x	10	0.00 %	0.35MB
14	Windows ME	6	0.00 %	0.29MB
15	Windows CE	2	0.00 %	0.62MB
16	Win32	1	0.00 %	0.06MB
17	Windows 95	1	0.00 %	0.05MB
	Total all Pages	277742	100.00 %	50,489.25MB

Frame Support

www.reading-travelinfo.co.uk

This section displays how many of the visitors to your site has Frames capable Browsers. **Note** Values displayed are only for the following browsers: Internet Explorer, Netscape and Opera.

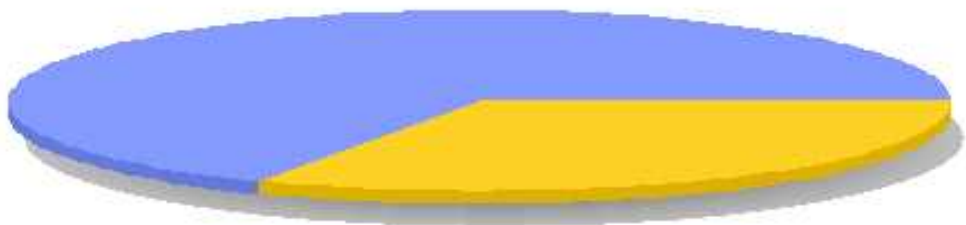


	Status	Page Views	% of Total Page Views	Visits	Bandwidth
1	Enabled	129064	100.00 %	129064	27,326.08MB
	Total all Pages	129064	100.00 %	129064	27,326.08MB

VBScript Support

www.reading-travelinfo.co.uk

This section displays how many of the visitors to your site has VBScript capable Browsers Note Values displayed are only for the following browsers namely Internet Explorer, Netscape and Opera.

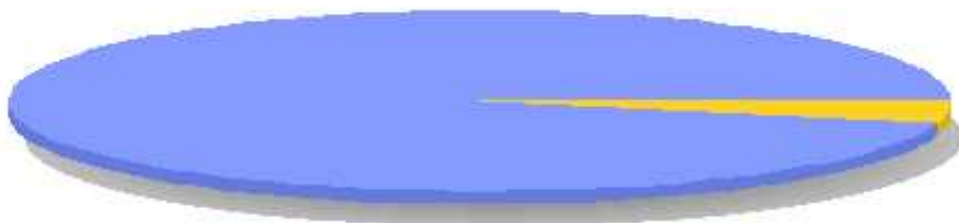


	Status	Page Views	% of Total Page Views	Visits	Bandwidth
1	Enabled	86770	67.23 %	86770	19,310.86MB
2	Disabled	42294	32.77 %	42294	8,015.22MB
	Total all Pages	129064	100.00 %	129064	27,326.08MB

JavaScript Support

www.reading-travelinfo.co.uk

This section displays how many of the visitors to your site has Javascript capable Browsers. **Note** Values displayed are only for the following browsers namely Internet Explorer, Netscape and Opera.

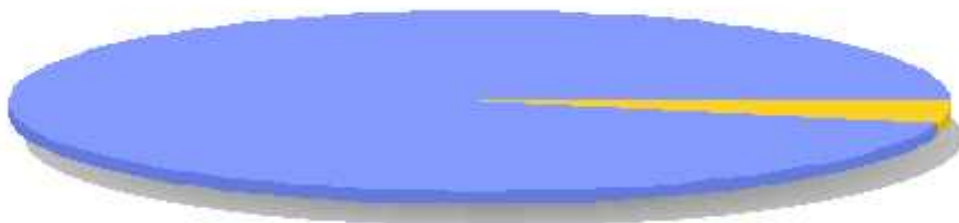


	Status	Page Views	% of Total Page Views	Visits	Bandwidth
1	Enabled	124149	96.19 %	124149	25,914.05MB
2	Disabled	4915	3.81 %	4915	1,412.02MB
	Total all Pages	129064	100.00 %	129064	27,326.08MB

Java Applet Support

www.reading-travelinfo.co.uk

This section displays how many of the visitors to your site has Java Applet capable Browsers. **Note** Values displayed are only for the following browsers namely Internet Explorer, Netscape and Opera.

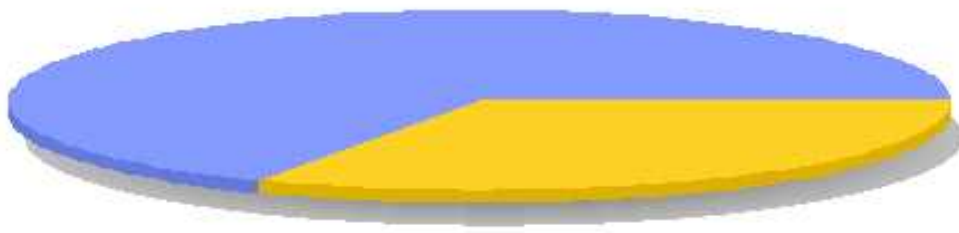


	Status	Page Views	% of Total Page Views	Visits	Bandwidth
1	Enabled	124148	96.19 %	124148	25,913.98MB
2	Disabled	4916	3.81 %	4916	1,412.10MB
	Total all Pages	129064	100.00 %	129064	27,326.08MB

ActiveX Support

www.reading-travelinfo.co.uk

This section displays how many of the visitors to your site has Active X capable Browsers. **Note** Values displayed are only for Internet Explorer, Netscape and Opera. Browsers with ActiveX support can run client-side ActiveX controls in the browser. ActiveX is Microsoft's answer to Java technology from Sun Microsystems.



	Status	Page Views	% of Total Page Views	Visits	Bandwidth
1	Enabled	86770	67.23 %	86770	19,310.86MB
2	Disabled	42294	32.77 %	42294	8,015.22MB
	Total all Pages	129064	100.00 %	129064	27,326.08MB

Server Errors

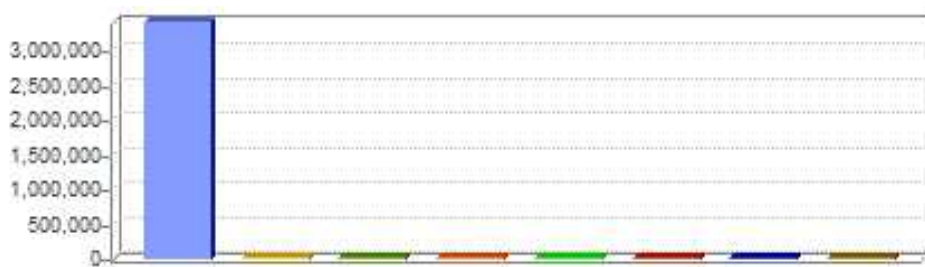
www.reading-travelinfo.co.uk

This section shows the errors that have occurred on the server. These are errors that start with a 5 and are caused by problems on the server.

Summary of HTTP Errors

www.reading-travelinfo.co.uk

This section shows the error types that have occurred on the site when accessed. Client errors start with a 4, for instance 403. These represent errors caused by typing a URL incorrectly etc.

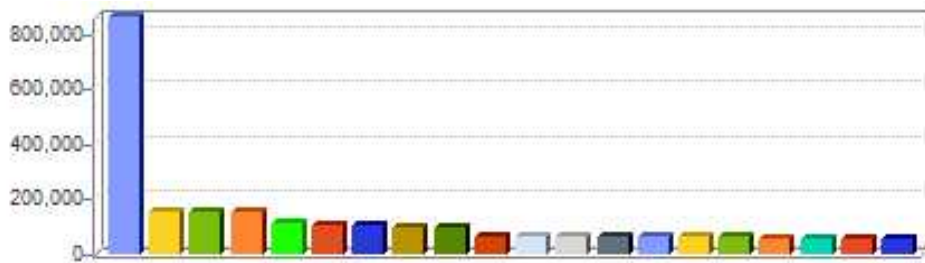


Error code	Error description	Count	% of Total Count
404	Page or File not found	3396849	99.56 %
500	Error Internal	7382	0.22 %
401	Unauthorized Access	4276	0.13 %
400	Bad Request	2173	0.06 %
416	Requested Range not satisfiable	880	0.03 %
406	Not acceptable	337	0.01 %
405	Method not allowed	102	0.00 %
403	Forbidden	4	0.00 %
Total all Pages		3412003	100.00 %

Requests causing Errors

www.reading-travelinfo.co.uk

This section shows the requests that caused errors on the site. It is best to investigate the cause of errors by inspecting these web pages.



Requests causing Errors

Error code	Filename	Count	% of Total
404	/utmc29b.net/cctv/getimage.aspx	856719	35.83
404	/utmc29b.net/cctv/cam a329.jpg	149829	6.27
404	/utmc29b.net/cctv/cam idrqr.jpg	149814	6.27
404	/utmc29b.net/cctv/cam a4idr.jpg	149813	6.27
404	/utmc29b.net/cctv/cam m4j6.jpg	108302	4.53
404	/utmc29b.net/cctv/cam m4j11.jpg	93966	3.93
404	/utmc29b.net/cctv/cam whi.jpg	93845	3.93
404	/utmc29b.net/cctv/cam a4074cv.jpg	93828	3.92
404	/utmc29b.net/cctv/cam cavlib.jpg	93532	3.91
404	/cctvclips2	59075	2.47
404	/utmc29b.net/cctv/cam m4j12.jpg	56902	2.38
404	/utmc29b.net/cctv/cam m4j89.jpg	56691	2.37
404	/utmc29b.net/cctv/cam a3290.jpg	56315	2.36
404	/utmc29b.net/cctv/cam a33br.jpg	56298	2.35
404	/utmc29b.net/cctv/cam a33rkl.jpg	56294	2.35
404	/utmc29b.net/cctv/cam a4br.jpg	56285	2.35
404	/cctvclips2/camera 02.2.jpg	50956	2.13
404	/cctvclips2/camera 02.30.jpg	50938	2.13
404	/cctvclips2/camera 06.jpg	50723	2.12
404	/cctvclips2/camera 02.35.	50712	2.12

jpg

2390837

Detail Daily Errors

www.reading-travelinfo.co.uk

This section shows the daily count of errors.

Scenario Analysis

www.reading-travelinfo.co.uk

Date	Count	% of Total
7 August 2012	65	0.00
8 August 2012	351	0.01
9 August 2012	108	0.00
10 August 2012	795	0.02
11 August 2012	520	0.02
12 August 2012	402	0.01
13 August 2012	464	0.01
14 August 2012	764	0.02
15 August 2012	918	0.03
16 August 2012	20	0.00
17 August 2012	55	0.00
18 August 2012	8	0.00
20	17	0.00

Aug ust 201 2		
21 Aug ust 201 2	9	0.00
22 Aug ust 201 2	3	0.00
23 Aug ust 201 2	5	0.00
24 Aug ust 201 2	4	0.00
25 Aug ust 201 2	3	0.00
26 Aug ust 201 2	1	0.00
27 Aug ust 201 2	1	0.00
28 Aug ust 201 2	4	0.00
30 Aug ust 201 2	4	0.00
31 Aug ust 201 2	3	0.00
3 Sep tem ber 201 2	42	0.00
4 Sep tem ber 201 2	33	0.00
5 Sep tem ber	14	0.00

201 2		
6 Sep tem ber 201 2	26	0.00
7 Sep tem ber 201 2	20	0.00
10 Sep tem ber 201 2	17	0.00
11 Sep tem ber 201 2	15	0.00
12 Sep tem ber 201 2	71	0.00
13 Sep tem ber 201 2	19	0.00
14 Sep tem ber 201 2	11	0.00
15 Sep tem ber 201 2	1	0.00
17 Sep tem ber 201 2	10	0.00
18 Sep tem ber 201 2	19	0.00
19 Sep tem ber 201 2	4	0.00
20 Sep tem	13	0.00

ber 201 2			
21 Sep tem ber 201 2	12		0.00
24 Sep tem ber 201 2	69		0.00
25 Sep tem ber 201 2	24		0.00
26 Sep tem ber 201 2	28		0.00
27 Sep tem ber 201 2	20		0.00
1 Oct obe r 201 2	26		0.00
2 Oct obe r 201 2	9		0.00
3 Oct obe r 201 2	25		0.00
4 Oct obe r 201 2	2		0.00
5 Oct obe r 201 2	30		0.00
8 Oct obe r 201 2	1		0.00
9 Oct	2		0.00

obe r 201 2			
10 Oct obe r 201 2	3		0.00
11 Oct obe r 201 2	7		0.00
12 Oct obe r 201 2	2		0.00
15 Oct obe r 201 2	49		0.00
16 Oct obe r 201 2	16		0.00
17 Oct obe r 201 2	25		0.00
18 Oct obe r 201 2	64		0.00
19 Oct obe r 201 2	4501		0.13
20 Oct obe r 201 2	8633		0.25
21 Oct obe r 201 2	7364		0.22
22 Oct obe r 201 2	9213		0.27
23	9150		0.27

Oct ober r 201 2			
24 Oct ober r 201 2	8804		0.26
25 Oct ober r 201 2	8866		0.26
26 Oct ober r 201 2	8792		0.26
27 Oct ober r 201 2	8715		0.26
28 Oct ober r 201 2	8312		0.24
29 Oct ober r 201 2	9426		0.28
30 Oct ober r 201 2	8631		0.25
31 Oct ober r 201 2	8254		0.24
1 Nov ember er 201 2	6900		0.20
2 Nov ember er 201 2	6620		0.19
3 Nov ember er 201 2	6202		0.18

4 Nov emb er 201 2	6536	0.19
5 Nov emb er 201 2	6490	0.19
6 Nov emb er 201 2	6615	0.19
7 Nov emb er 201 2	5872	0.17
8 Nov emb er 201 2	6520	0.19
9 Nov emb er 201 2	6027	0.18
10 Nov emb er 201 2	5562	0.16
11 Nov emb er 201 2	5421	0.16
12 Nov emb er 201 2	6149	0.18
13 Nov emb er 201 2	6987	0.20
14 Nov emb er 201 2	5398	0.16
15 Nov emb er 201 2	5709	0.17

16 Nov ember 201 2	9395	0.28
17 Nov ember 201 2	17372	0.51
18 Nov ember 201 2	13702	0.40
19 Nov ember 201 2	16560	0.49
20 Nov ember 201 2	19315	0.57
21 Nov ember 201 2	17952	0.53
22 Nov ember 201 2	17370	0.51
23 Nov ember 201 2	20291	0.59
24 Nov ember 201 2	16686	0.49
25 Nov ember 201 2	14213	0.42
26 Nov ember 201 2	18752	0.55
27 Nov ember 201 2	18422	0.54

28 Nov emb er 201 2	18237	0.53
29 Nov emb er 201 2	19130	0.56
30 Nov emb er 201 2	19212	0.56
1 Dec emb er 201 2	17437	0.51
2 Dec emb er 201 2	12936	0.38
3 Dec emb er 201 2	17170	0.50
4 Dec emb er 201 2	17214	0.50
5 Dec emb er 201 2	18846	0.55
6 Dec emb er 201 2	15688	0.46
7 Dec emb er 201 2	18173	0.53
8 Dec emb er 201 2	15696	0.46
9 Dec emb er 201 2	14851	0.44

10 Dec emb er 201 2	17455	0.51
11 Dec emb er 201 2	19156	0.56
12 Dec emb er 201 2	17156	0.50
13 Dec emb er 201 2	19418	0.57
14 Dec emb er 201 2	18452	0.54
15 Dec emb er 201 2	14795	0.43
16 Dec emb er 201 2	12670	0.37
17 Dec emb er 201 2	15894	0.47
18 Dec emb er 201 2	16392	0.48
19 Dec emb er 201 2	19625	0.58
20 Dec emb er 201 2	18548	0.54
21 Dec emb er 201 2	17519	0.51

22 Dec emb er 201 2	18473	0.54
23 Dec emb er 201 2	16940	0.50
24 Dec emb er 201 2	21273	0.62
25 Dec emb er 201 2	13697	0.40
26 Dec emb er 201 2	17374	0.51
27 Dec emb er 201 2	13675	0.40
28 Dec emb er 201 2	16003	0.47
29 Dec emb er 201 2	15693	0.46
30 Dec emb er 201 2	12779	0.37
31 Dec emb er 201 2	16152	0.47
1 Jan uary 201 3	16291	0.48
2 Jan uary 201 3	17602	0.52
3	16692	0.49

January 2013		
4 January 2013	17073	0.50
5 January 2013	16403	0.48
6 January 2013	13520	0.40
7 January 2013	16844	0.49
8 January 2013	17354	0.51
9 January 2013	16109	0.47
10 January 2013	18558	0.54
11 January 2013	17192	0.50
12 January 2013	14901	0.44
13 January 2013	15615	0.46
14 January 2013	23330	0.68
15 January 2013	17840	0.52
16 January 2013	18013	0.53
17	13012	0.38

January 2013		
18 January 2013	14807	0.43
19 January 2013	17096	0.50
20 January 2013	18522	0.54
21 January 2013	16399	0.48
22 January 2013	17612	0.52
23 January 2013	17819	0.52
24 January 2013	16302	0.48
25 January 2013	16048	0.47
26 January 2013	11986	0.35
27 January 2013	13717	0.40
28 January 2013	17995	0.53
29 January 2013	17873	0.52
30 January 2013	15693	0.46
31	16152	0.47

January 2013		
1 February 2013	18583	0.54
2 February 2013	16265	0.48
3 February 2013	13784	0.40
4 February 2013	16159	0.47
5 February 2013	16456	0.48
6 February 2013	16054	0.47
7 February 2013	18563	0.54
8 February 2013	15225	0.45
9 February 2013	15013	0.44
10 February 2013	15548	0.46
11 February 2013	21544	0.63
12	16994	0.50

Feb ruar y 201 3			
13 Feb ruar y 201 3	12995		0.38
14 Feb ruar y 201 3	15084		0.44
15 Feb ruar y 201 3	18532		0.54
16 Feb ruar y 201 3	17723		0.52
17 Feb ruar y 201 3	12945		0.38
18 Feb ruar y 201 3	16053		0.47
19 Feb ruar y 201 3	16182		0.47
20 Feb ruar y 201 3	17217		0.50
21 Feb ruar y 201 3	16433		0.48
22 Feb ruar y 201 3	15002		0.44
23 Feb ruar y 201 3	16180		0.47

24 Feb ruar y 201 3	14032	0.41
25 Feb ruar y 201 3	16781	0.49
26 Feb ruar y 201 3	19078	0.56
27 Feb ruar y 201 3	17707	0.52
28 Feb ruar y 201 3	14301	0.42
1 Mar ch 201 3	16453	0.48
2 Mar ch 201 3	13982	0.41
3 Mar ch 201 3	12351	0.36
4 Mar ch 201 3	16812	0.49
5 Mar ch 201 3	15271	0.45
6 Mar ch 201 3	16225	0.48
7 Mar ch 201 3	14819	0.43
8 Mar ch 201 3	14734	0.43

9 Mar ch 201 3	14696	0.43
10 Mar ch 201 3	12089	0.35
11 Mar ch 201 3	18797	0.55
12 Mar ch 201 3	19363	0.57
13 Mar ch 201 3	12163	0.36
14 Mar ch 201 3	19992	0.59
15 Mar ch 201 3	19640	0.58
16 Mar ch 201 3	14416	0.42
17 Mar ch 201 3	15915	0.47
18 Mar ch 201 3	18690	0.55
19 Mar ch 201 3	15330	0.45
20 Mar ch 201 3	14890	0.44
21 Mar ch 201 3	17875	0.52
22 Mar ch 201 3	19201	0.56

23 Mar ch 201 3	15949	0.47
24 Mar ch 201 3	13192	0.39
25 Mar ch 201 3	15257	0.45
26 Mar ch 201 3	17946	0.53
27 Mar ch 201 3	15280	0.45
28 Mar ch 201 3	18191	0.53
29 Mar ch 201 3	14715	0.43
30 Mar ch 201 3	14071	0.41
31 Mar ch 201 3	11667	0.34
1 Apri l 201 3	17696	0.52
2 Apri l 201 3	13379	0.39
3 Apri l 201 3	14043	0.41
4 Apri l 201 3	14218	0.42
5 Apri l 201 3	16528	0.48

6 Apri l 201 3	11390	0.33
7 Apri l 201 3	13031	0.38
8 Apri l 201 3	19273	0.56
9 Apri l 201 3	19938	0.58
10 Apri l 201 3	16226	0.48
11 Apri l 201 3	15896	0.47
12 Apri l 201 3	17298	0.51
13 Apri l 201 3	14541	0.43
14 Apri l 201 3	14561	0.43
15 Apri l 201 3	16337	0.48
16 Apri l 201 3	17488	0.51
17 Apri l 201 3	18701	0.55
18 Apri l 201 3	17475	0.51
19 Apri l 201 3	15531	0.46

20 Apri l 201 3	14200	0.42
21 Apri l 201 3	12799	0.38
22 Apri l 201 3	15939	0.47
23 Apri l 201 3	18099	0.53
24 Apri l 201 3	18576	0.54
25 Apri l 201 3	17069	0.50
26 Apri l 201 3	16634	0.49
27 Apri l 201 3	13038	0.38
28 Apri l 201 3	14733	0.43
29 Apri l 201 3	17310	0.51
30 Apri l 201 3	17430	0.51
1 May 201 3	16919	0.50
2 May 201 3	17238	0.51
3 May 201 3	16818	0.49
4 May 201	14433	0.42

3		
5 May 201 3	14203	0.42
6 May 201 3	16059	0.47
7 May 201 3	18817	0.55
8 May 201 3	16639	0.49
9 May 201 3	17341	0.51
10 May 201 3	17225	0.50
11 May 201 3	13583	0.40
12 May 201 3	14643	0.43
13 May 201 3	15226	0.45
14 May 201 3	15922	0.47
15 May 201 3	16136	0.47
16 May 201 3	14744	0.43
17 May 201 3	17129	0.50
18 May 201 3	13415	0.39
19 May 201 3	12802	0.38
20 May 201 3	15905	0.47
21 May 201	15139	0.44

3		
22 May 201 3	15737	0.46
23 May 201 3	14691	0.43
24 May 201 3	10903	0.32
25 May 201 3	13221	0.39
26 May 201 3	13230	0.39
27 May 201 3	15796	0.46
28 May 201 3	17955	0.53
29 May 201 3	20985	0.62
30 May 201 3	15551	0.46
31 May 201 3	17823	0.52
1 Jun e 201 3	4942	0.14
Tota l	3412003	100.00

Orders by Search Phrase

www.reading-travelinfo.co.uk

No data available for this report

Cost by Search Phrase

www.reading-travelinfo.co.uk

No data available for this report

Revenue by Search Phrase

www.reading-travelinfo.co.uk

No data available for this report

ROI Campaign Source and Campaign

www.reading-travelinfo.co.uk

This report displays the revenue by campaign source and campaign. If you click on a column the report will be sorted by that column. Clicking again will reverse the sort

No data available for this report

