

C

March 2016

 TV LICENSING

Field

Confidential

INDEX

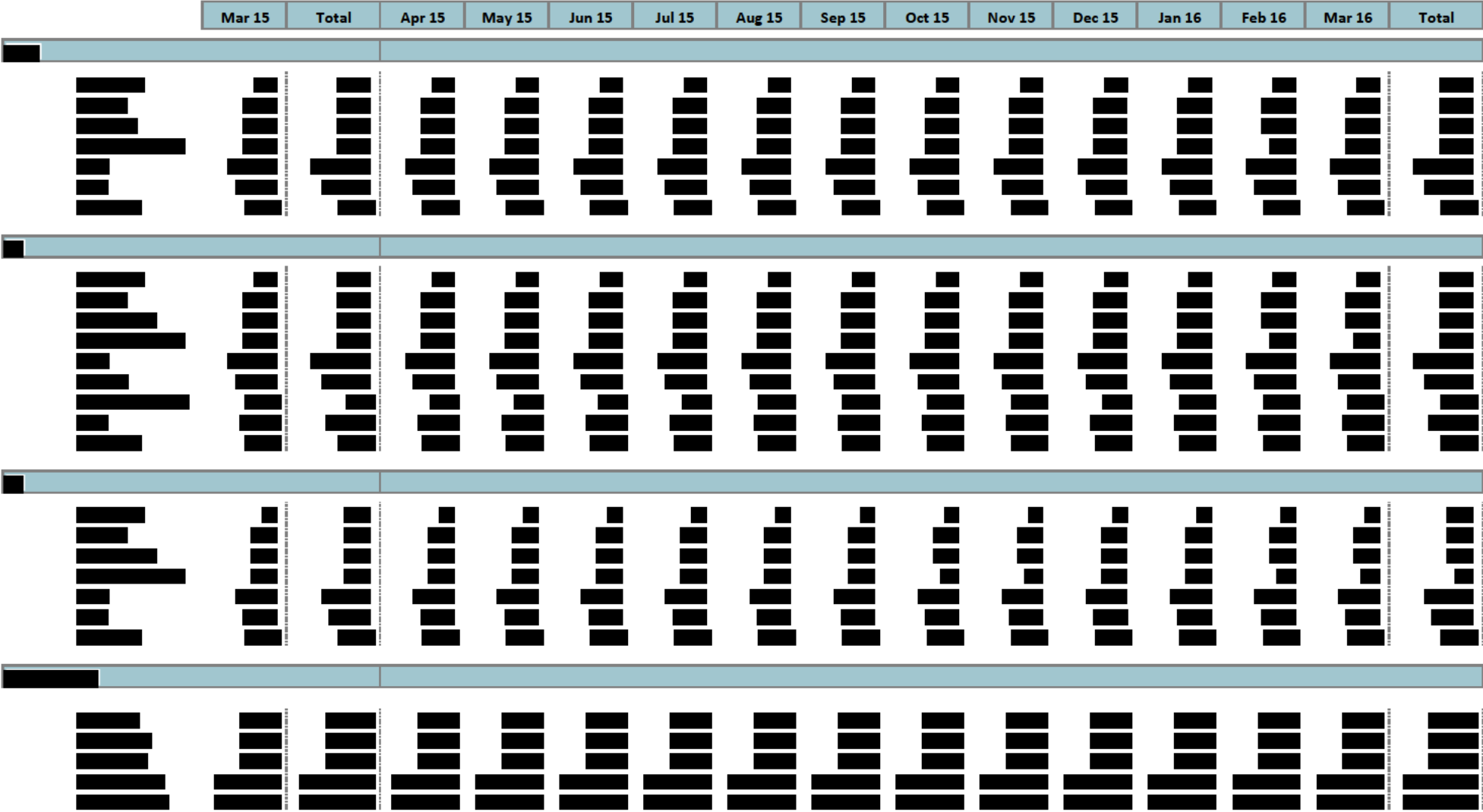
Page	Schedule Title
1	Field Summary
2	Field Position
3	Sales Analysis
8	Resource & Commercial Analysis
9	VO Monthly Utilisation by Activity
10	Commercial Visiting Results
12	G4S
13	Visits Analysis
14	TVL Field Performance Visit Results Summary Report
17	NLN
18	Visit Pot Analysis
19	Visits Loaded by Type
20	Visits Made By Type - Enforcement
22	Visits Made By Types - Total
23	Evader Caught Analysis
25	Monthly TVL Field Performance Report - Case Results
26	Withdrawn Cases
27	Court Activity By Month

Schedule Amendments/Additions:

Additions

Amendments

Field Summary Dashboard



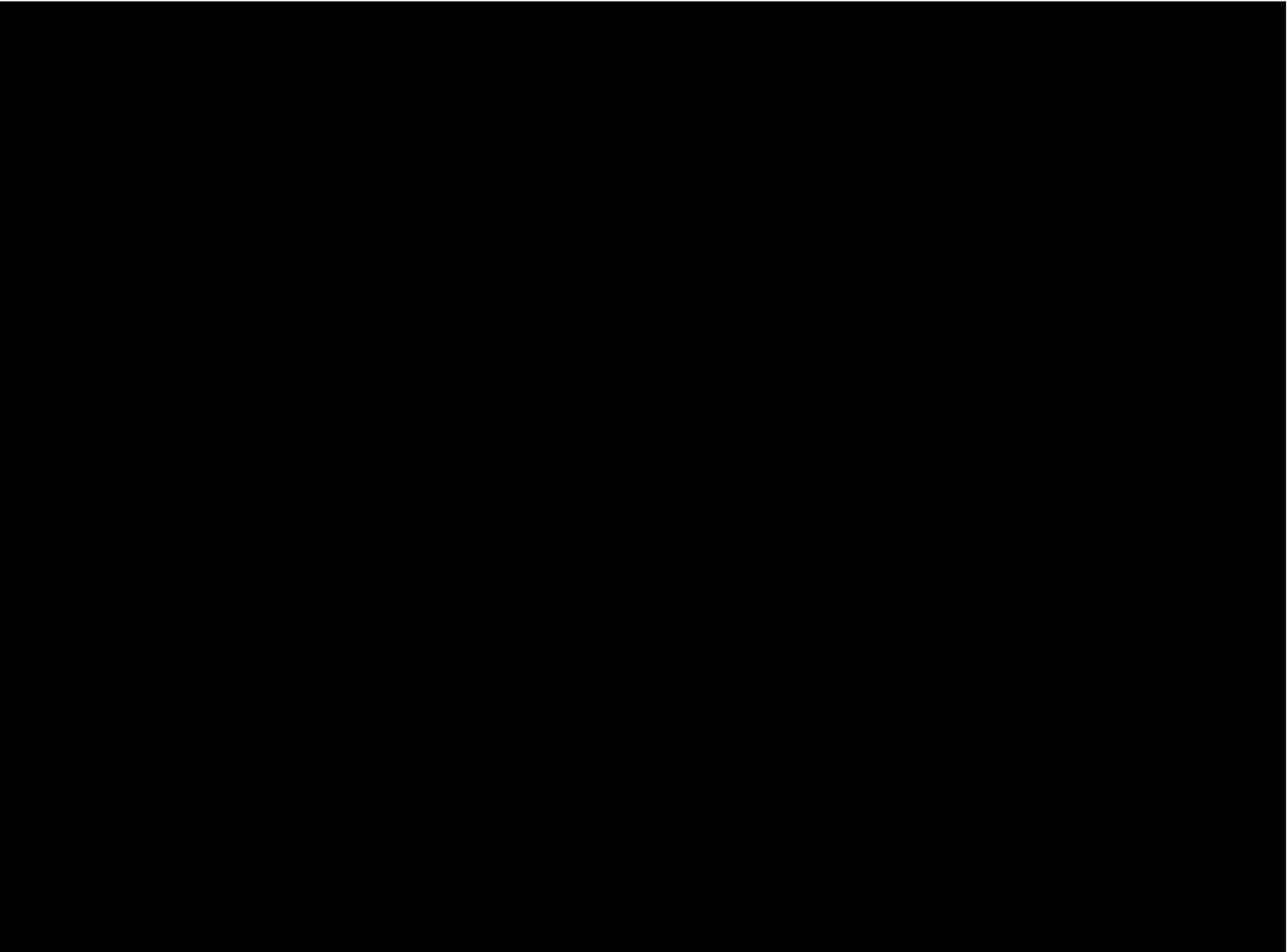
Field Position

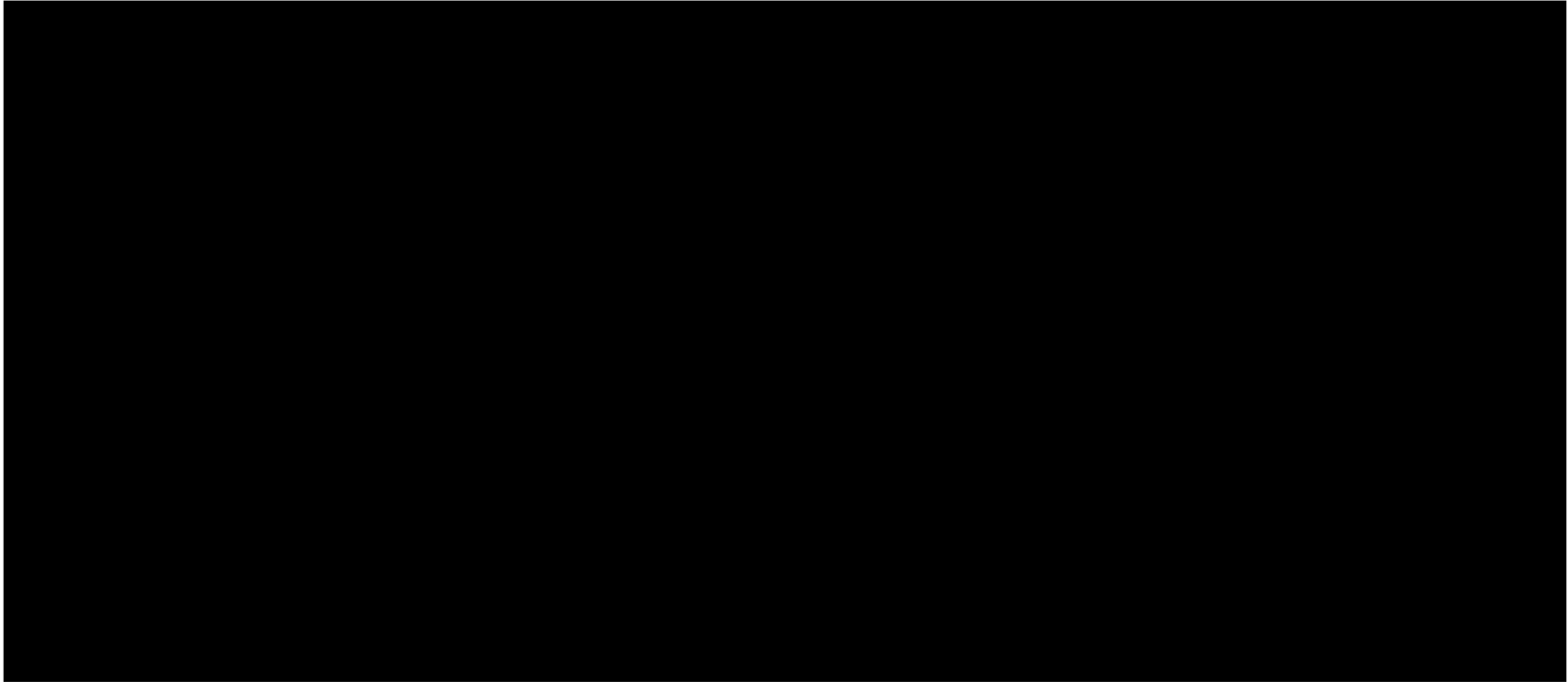
April	May	June	July	August	September	October	November	December	January	February	March	YTD	Year End Out Turn Gross	Target (Gross)
-------	-----	------	------	--------	-----------	---------	----------	----------	---------	----------	-------	-----	-------------------------------	-------------------

Field Position

[illegible]

The diagram illustrates a hierarchical structure, likely representing a project plan or organizational chart. It features a top-level bar divided into 14 segments, followed by a grid of blocks. The blocks are arranged in a way that suggests a flow or hierarchy, with some blocks spanning multiple rows or columns. The diagram is set against a white background with a light gray grid.





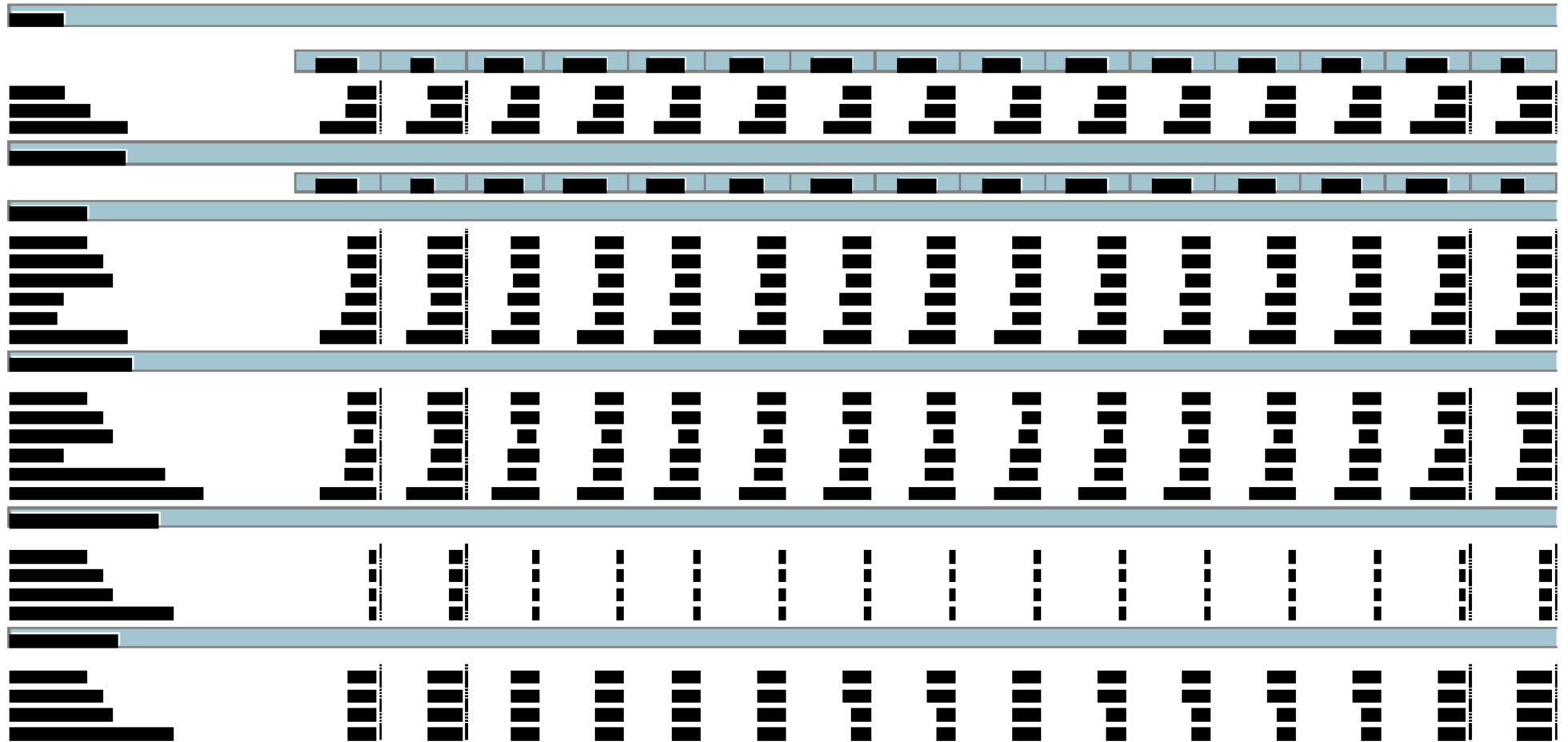
[illegible]

[Redacted]

Monthly Visit Utilisation By Activity (In Hours)

[illegible]

Commercial Visiting



Commercial Visiting



[illegible]

Visits

The image is entirely black and contains no visible content.

██████████ - Visit Results Summary

[illegible]

Year to Date Performance

[illegible]

Figure 1 illustrates the experimental design. The trial sequence is as follows:

- Fixation:** A fixation cross is displayed for 200 ms.
- Stimulus:** A word is presented for 200 ms.
- Response:** The participant presses a button for 200 ms.
- Feedback:** A green or red light is displayed for 200 ms.
- Repeat:** The trial is repeated for 10 trials.

██████████ - Visit Results Summary

[illegible]


















RFI 23 - NLN Visit Activity

[illegible]

Breakdown of Visit Results		
1	2	3
4	5	6
7	8	9
10	11	12
13	14	15
16	17	18
19	20	21
22	23	24
25	26	27
28	29	30
31	32	33
34	35	36
37	38	39
40	41	42
43	44	45
46	47	48
49	50	51
52	53	54
55	56	57
58	59	60
61	62	63
64	65	66
67	68	69
70	71	72
73	74	75
76	77	78
79	80	81
82	83	84
85	86	87
88	89	90
91	92	93
94	95	96
97	98	99
100	101	102
103	104	105
106	107	108
109	110	111
112	113	114
115	116	117
118	119	120
121	122	123
124	125	126
127	128	129
130	131	132
133	134	135
136	137	138
139	140	141
142	143	144
145	146	147
148	149	150
151	152	153
154	155	156
157	158	159
160	161	162
163	164	165
166	167	168
169	170	171
172	173	174
175	176	177
178	179	180
181	182	183
184	185	186
187	188	189
190	191	192
193	194	195
196	197	198
199	200	201
202	203	204
205	206	207
208	209	210
211	212	213
214	215	216
217	218	219
220	221	222
223	224	225
226	227	228
229	230	231
232	233	234
235	236	237
238	239	240
241	242	243
244	245	246
247	248	249
250	251	252
253	254	255
256	257	258
259	260	261
262	263	264
265	266	267
268	269	270
271	272	273
274	275	276
277	278	279
280	281	282
283	284	285
286	287	288
289	290	291
292	293	294
295	296	297
298	299	300
301	302	303
304	305	306
307	308	309
310	311	312
313	314	315
316	317	318
319	320	321
322	323	324
325	326	327
328	329	330
331	332	333
334	335	336
337	338	339
340	341	342
343	344	345
346	347	348
349	350	351
352	353	354
355	356	357
358	359	360
361	362	363
364	365	366
367		

The image displays a complex visualization consisting of two main parts: a horizontal bar chart on the left and a series of 15 vertical bar charts on the right.

Horizontal Bar Chart (Left): This chart features 15 horizontal bars of varying lengths, representing different data points. The bars are black and are set against a white background.

Vertical Bar Charts (Right): There are 15 vertical bar charts arranged in a grid. Each row contains 15 bars, and each column contains 15 bars. The bars are black and white, and the overall layout is minimalist.

The visualization appears to be a data representation, possibly related to a specific dataset or a complex system. The horizontal bar chart on the left provides a summary of the data, while the vertical bar charts on the right provide a detailed view of the data points.

Visit Pot Analysis



Visits Loaded by Type

[illegible]

Visits Made by Type

[illegible]

Visits Made by Type

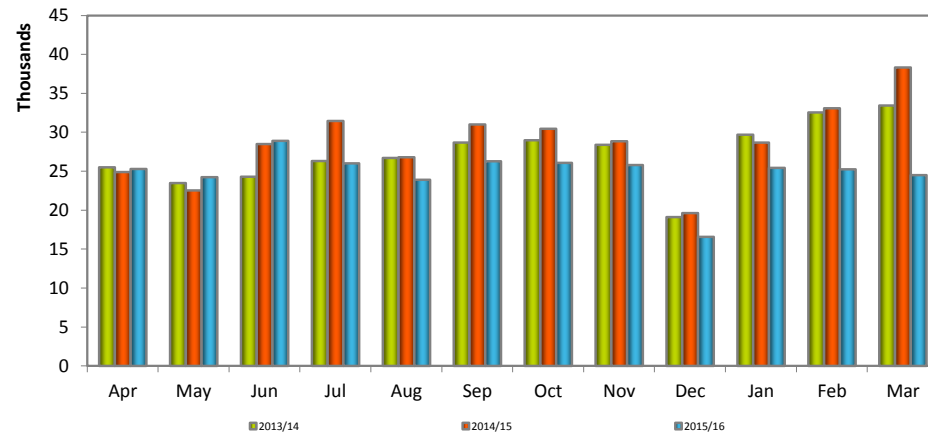
[illegible]

Visits Made by Type

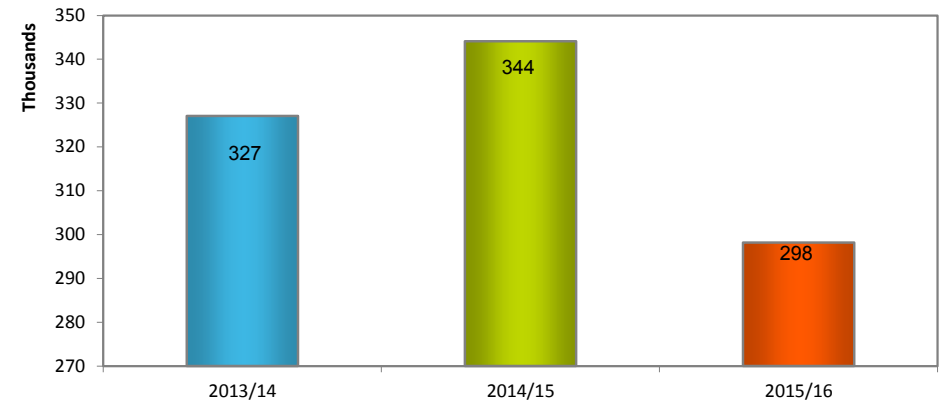
[illegible]

Evaders Caught

Evaders Caught Code 8's Only

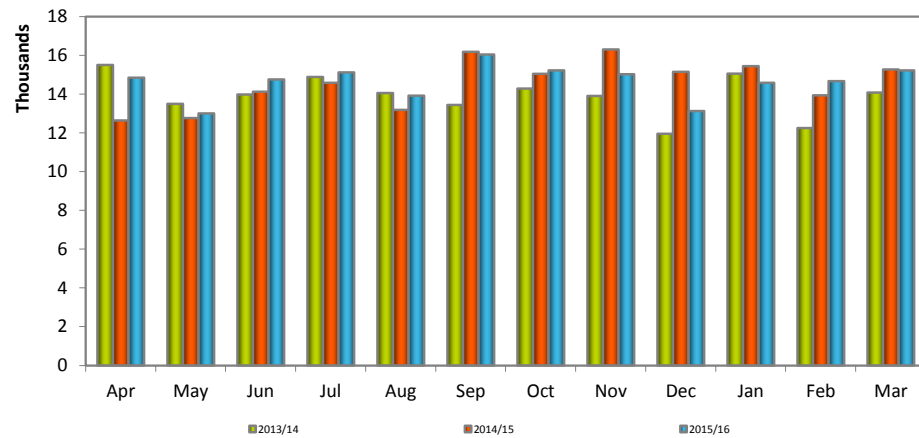


YTD Evaders Caught Code 8's Only

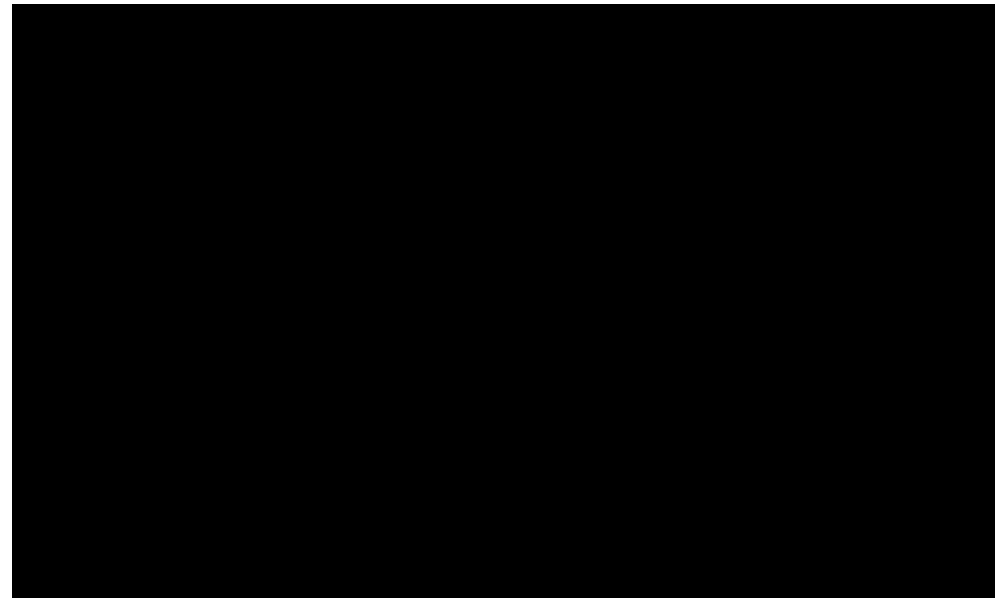


ref: Visit Results (Cap Enf) mmyy

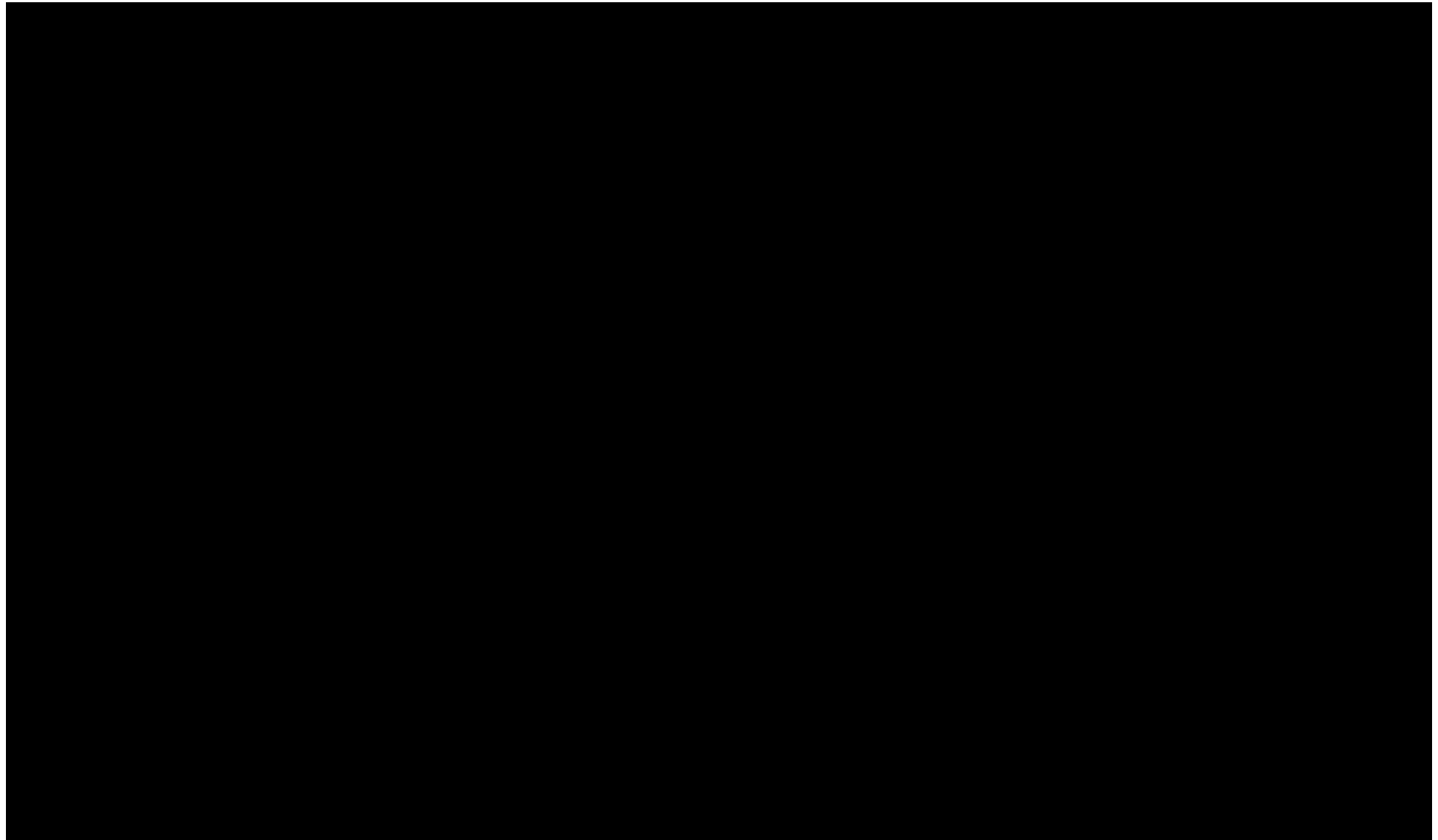
National Convictions



ref: Visit Results (Cap Enf) mmyy



Evaders Caught



Monthly TVL Field Performance Report - Case Results

Confidential - 3.4.45

Withdrawn Cases

		Mar 15	Total 14/15	Apr 15	May 15	Jun 15	Jul 15	Aug 15	Sep 15	Oct 15	Nov 15	Dec 15	Jan 16	Feb 16	Mar 16	Total 15/16
Definition	Code															
Un-Assigned	(blank)	0	4	0	0	0	0	0	0	0	0	0	0	0	0	0
Absolute Discharge	AD00	0	4	0	0	0	0	0	0	0	0	0	0	0	0	0
Case rejected by PF (Scotland only)	3K	5	200	6	17	5	1	5	4	10	19	7	8	9	8	99
Conditional Discharge	CD06	0	5	0	0	0	0	0	0	0	0	0	0	0	0	0
Conditional Discharge	CD12	0	1	0	0	0	0	0	0	0	0	0	0	0	0	0
Deceased: After Case Laid	2U	5	22	2	1	1	1	0	6	5	0	0	0	2	1	19
Further action: After Conviction	4Q	2	21	2	2	0	0	0	1	0	2	1	1	0	0	9
Gone away: After Case Laid	2H	110	1,586	97	61	68	84	98	143	95	158	112	135	98	106	1,255
Inappropriate person: After Case Laid	2B	45	379	41	41	34	23	38	58	64	58	51	45	42	41	536
Lack of evidence: After Case Laid	2A1	10	92	9	9	11	4	8	12	9	18	11	14	21	15	141
Lic already held: After Case Laid	2C	27	259	19	24	24	21	20	18	21	17	16	22	25	22	249
Licence now on file: After Conviction	4R	2	8	2	1	0	0	1	2	1	1	0	0	0	0	8
NIPi (Hardship): After Case Laid	2G3	25	104	16	10	21	24	8	9	19	25	19	37	22	26	236
NIPi (Hostile Circs): After Case Laid	2G4	6	27	7	2	8	4	6	0	3	5	9	7	7	12	70
NIPi: After Case Laid	2G1	91	1,111	114	86	112	74	86	86	106	99	89	78	97	114	1,141
No disposal received (Scotland only)	ND	1	17	4	1	0	0	0	2	0	4	0	1	0	0	12
Out of time: > 26 Weeks & Not Laid	1E	0	0	0	0	0	0	0	0	0	0	0	0	0	0	0
PICS Policy: After Case Laid	2D	1,954	19,449	1,609	1,333	1,393	1,434	1,562	1,881	1,625	1,514	1,466	1,661	1,591	1,845	18,914
PICS Policy: Successful Conviction	4D	2	8	0	0	0	0	0	2	0	0	1	1	0	0	4
Refused by court: Not Laid	1S	0	3	2	0	0	0	0	0	0	0	0	0	0	0	2
Summons not served: After Case Laid	2I	256	3,008	215	232	249	149	202	204	168	125	138	131	264	103	2,180
Under 18: After Case Laid	2J	2	25	3	2	4	0	3	0	6	2	3	4	1	1	29
VO unavailable: After Case Laid	2L	106	1,285	92	79	108	119	145	179	125	147	82	94	75	69	1,314
Statutory Declaration: After Conviction	4T	0	0	0	1	1	0	0	0	0	0	0	0	0	0	2
Lack of evidence: Failed at Court	3A1	0	0	0	0	0	0	0	0	0	0	0	0	0	0	0
NIPi (Age 73+): After Case Laid	2G6	0	3	0	0	0	0	0	0	0	1	0	0	1	0	2
VO under investigation: After Case Laid	2L1	0	0	0	0	0	0	0	0	0	0	0	1	0	21	22
PICS Policy: Failed at Court	3D	0	0	0	0	0	0	0	0	0	0	0	0	0	0	0
NIPi: Failed at Court	3G1	0	1	0	0	0	0	0	0	0	0	0	0	0	0	0
VO unavailable: Failed at Court	3L	0	0	0	0	0	0	0	0	0	0	0	0	0	0	0
Grand Total		2,649	27,622	2,240	1,902	2,039	1,938	2,182	2,607	2,257	2,195	2,005	2,240	2,255	2,384	26,244

Analysis of Court Activity by Month/Cumulative

Month												
	Apr 13	May 13	Jun 13	Jul 13	Aug 13	Sep 13	Oct 13	Nov 13	Dec 13	Jan 14	Feb 14	Mar 14
Cases Laid	15,290	16,580	13,673	15,534	11,760	13,993	17,249	13,211	14,678	17,821	18,609	16,388
Cases Heard	18,262	16,047	16,488	17,177	16,224	15,746	16,453	15,830	13,616	17,077	14,096	16,385
Convictions	15,505	13,498	13,981	14,885	14,057	13,442	14,286	13,907	11,954	15,058	12,250	14,081
Cases Withdrawn	2,756	2,548	2,503	2,289	2,166	2,301	2,163	1,921	1,661	2,015	1,844	2,297
Fines Imposed	£2,451,623	£2,122,388	£2,180,460	£2,314,132	£2,321,790	£2,242,788	£2,268,202	£2,155,309	£1,879,401	£2,488,992	£2,018,846	£2,189,546
Costs Awarded	£1,182,057	£1,024,199	£1,107,273	£1,155,931	£1,082,516	£1,059,563	£1,148,747	£1,052,396	£928,572	£1,193,402	£1,069,990	£1,414,914
Costs Received												
	Apr 14	May 14	Jun 14	Jul 14	Aug 14	Sep 14	Oct 14	Nov 14	Dec 14	Jan 15	Feb 15	Mar 15
Cases Laid	15,718	16,853	19,018	16,400	14,459	16,070	17,692	12,658	14,891	17,403	20,618	15,570
Cases Heard	14,429	14,665	16,166	16,717	15,410	18,761	17,367	18,744	17,706	17,971	16,445	17,911
Convictions	12,641	12,765	14,124	14,584	13,187	16,182	15,048	16,305	15,150	15,445	13,939	15,273
Cases Withdrawn	1,787	1,899	2,035	2,132	2,221	2,576	2,318	2,438	2,548	2,523	2,503	2,636
Fines Imposed	£2,074,192	£2,046,431	£2,289,471	£2,375,761	£2,121,481	£2,756,181	£2,560,925	£2,601,004	£2,534,826	£2,579,127	£2,280,092	£2,450,322
Costs Awarded	£1,317,047	£1,328,252	£1,478,512	£1,523,165	£1,407,675	£1,762,232	£1,675,092	£1,804,358	£1,683,034	£1,702,908	£1,558,617	£1,667,544
Costs Received												
	Apr 15	May 15	Jun 15	Jul 15	Aug 15	Sep 15	Oct 15	Nov 15	Dec 15	Jan 16	Feb 16	Mar 16
Cases Laid	14,999	17,929	19,384	18,456	14,903	18,137	15,908	16,295	13,048	18,906	14,111	13,880
Cases Heard	17,092	14,908	16,801	17,061	16,104	18,653	17,485	17,229	15,133	16,827	16,928	17,610
Convictions	14,849	13,004	14,757	15,121	13,920	16,045	15,225	15,028	13,127	14,584	14,671	15,224
Cases Withdrawn	2,240	1,902	2,039	1,938	2,182	2,607	2,257	2,195	2,005	2,240	2,255	2,384
Fines Imposed	£2,400,918	£2,141,133	£2,517,524	£2,463,835	£2,181,058	£2,647,084	£2,677,684	£2,637,926	£2,316,474	£2,674,918	£2,599,481	£2,619,520
Costs Awarded	£1,622,277	£1,409,011	£1,628,218	£1,645,861	£1,496,944	£1,725,434	£1,649,864	£1,584,790	£1,385,710	£1,558,715	£1,575,877	£1,636,099
Costs Received												

Analysis of Court Activity by Month/Cumulative

Cumulative

	Apr 13	May 13	Jun 13	Jul 13	Aug 13	Sep 13	Oct 13	Nov 13	Dec 13	Jan 14	Feb 14	Mar 14
Cases Laid	15,290	31,870	45,543	61,077	72,837	86,830	104,079	117,290	131,968	149,789	168,398	184,786
Cases Heard	18,262	34,309	50,797	67,974	84,198	99,944	116,397	132,227	145,843	162,920	177,016	193,401
Convictions	15,505	29,003	42,984	57,869	71,926	85,368	99,654	113,561	125,515	140,573	152,823	166,904
Cases Withdrawn	2,756	5,304	7,807	10,096	12,262	14,563	16,726	18,647	20,308	22,323	24,167	26,464
Fines Imposed	£2,451,623	£4,574,010	£6,754,470	£9,068,602	£11,390,392	£13,633,180	£15,901,382	£18,056,691	£19,936,092	£22,425,083	£24,443,929	£26,633,475
Costs Awarded	£1,182,057	£2,206,256	£3,313,529	£4,469,460	£5,551,976	£6,611,539	£7,760,286	£8,812,682	£9,741,254	£10,934,656	£12,004,646	£13,419,559
Costs Received												

	Apr 14	May 14	Jun 14	Jul 14	Aug 14	Sep 14	Oct 14	Nov 14	Dec 14	Jan 15	Feb 15	Mar 15
Cases Laid	15,718	32,571	51,589	67,989	82,448	98,518	116,210	128,868	143,759	161,162	181,780	197,350
Cases Heard	14,429	29,094	45,260	61,977	77,387	96,148	113,515	132,259	149,965	167,936	184,381	202,292
Convictions	12,641	25,406	39,530	54,114	67,301	83,483	98,531	114,836	129,986	145,431	159,370	174,643
Cases Withdrawn	1,787	3,686	5,721	7,853	10,074	12,650	14,968	17,406	19,954	22,477	24,980	27,616
Fines Imposed	£2,074,192	£4,120,623	£6,410,093	£8,785,854	£10,907,335	£13,663,516	£16,224,441	£18,825,445	£21,360,270	£23,939,397	£26,219,488	£28,669,810
Costs Awarded	£1,317,047	£2,645,299	£4,123,811	£5,646,976	£7,054,652	£8,816,883	£10,491,975	£12,296,333	£13,979,367	£15,682,274	£17,240,891	£18,908,436
Costs Received												

	Apr 15	May 15	Jun 15	Jul 15	Aug 15	Sep 15	Oct 15	Nov 15	Dec 15	Jan 16	Feb 16	Mar 16
Cases Laid	14,999	32,928	52,312	70,768	85,671	103,808	119,716	136,011	149,059	167,965	182,076	195,956
Cases Heard	17,092	32,000	48,801	65,862	81,966	100,619	118,104	135,333	150,466	167,293	184,221	201,831
Convictions	14,849	27,853	42,610	57,731	71,651	87,696	102,921	117,949	131,076	145,660	160,331	175,555
Cases Withdrawn	2,240	4,142	6,181	8,119	10,301	12,908	15,165	17,360	19,365	21,605	23,860	26,244
Fines Imposed	£2,400,918	£4,542,051	£7,059,575	£9,523,410	£11,704,468	£14,351,552	£17,029,236	£19,667,162	£21,983,636	£24,658,554	£27,258,035	£29,877,555
Costs Awarded	£1,622,277	£3,031,288	£4,659,505	£6,305,366	£7,802,310	£9,527,744	£11,177,609	£12,762,399	£14,148,109	£15,706,824	£17,282,701	£18,918,800
Costs Received												