

CNWL Divisional Structure Charts

Updated August 2019

I am looking for:

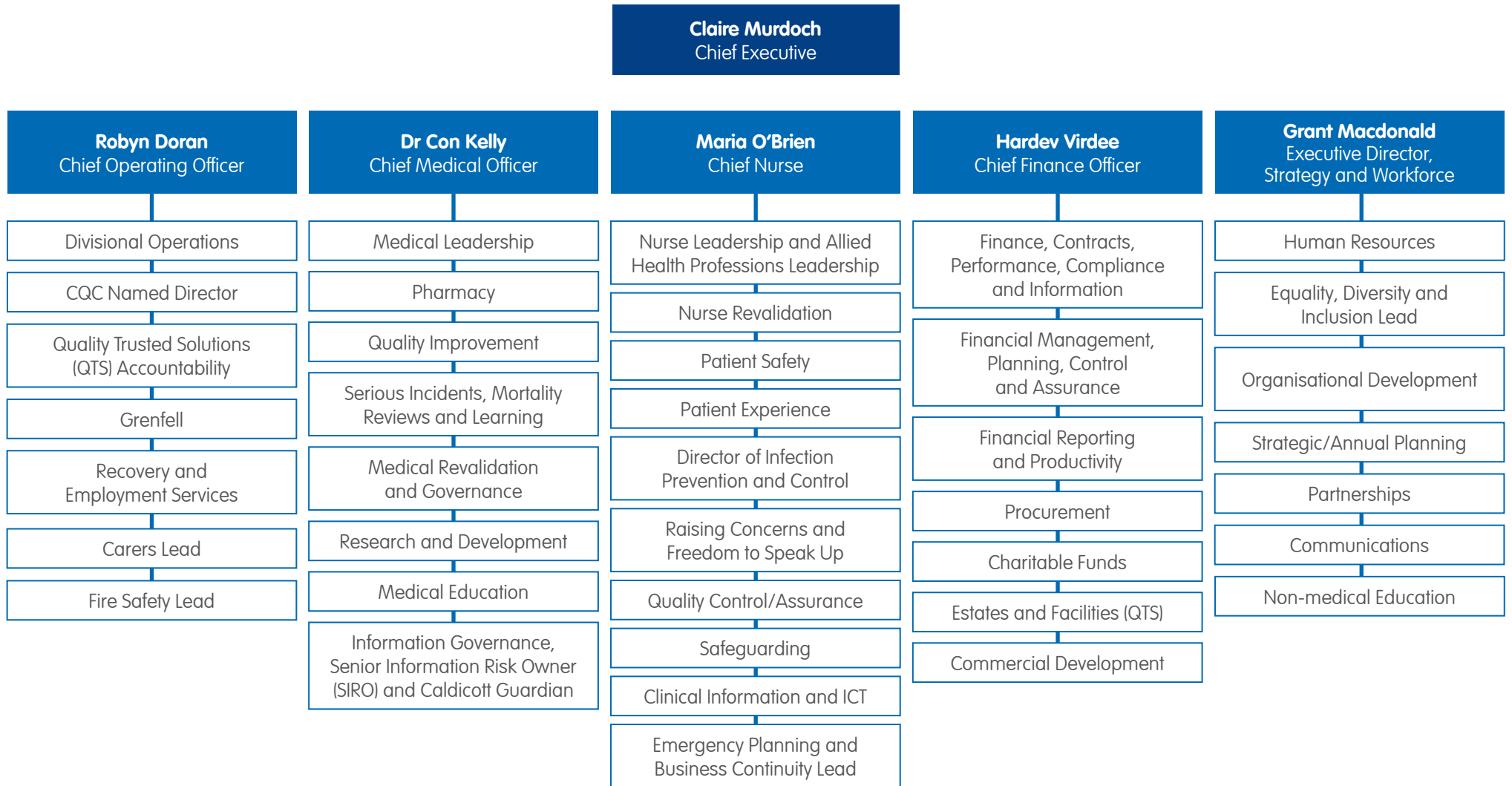
Executive portfolio

Jameson Division

Goodall Division

Diggory Division

Executive portfolio



Jameson division

Ade Odunlade
Managing Director
 Reporting to Robyn Doran
 Chief Operating Officer

Stephen Cook
Nursing Director
 Reporting to Maria O'Brien
 Chief Nurse

Dr Jo Emmanuel
Medical Director
 Reporting to Dr Con Kelly
 Chief Medical Officer

Safeguarding Children
Susan Bray
 Named Professional
 (Mental Health)
Dr Mike McClure
 Named Doctor

Paula Robins
 Clinical Practice
 Improvement Lead

Pharmacy
Niina Ezewuzie
 Associate Chief Pharmacist

**Infection, Prevention
 and Control**
Judith Greening
 IPC Lead

**Safeguarding Adults
 /MCA Specialists**
Elaine Singaram
 Brent and Harrow
 MCA Specialist
Julie Akorley
 Kensington & Chelsea and
 Westminster MCA Specialist

Talking Therapies (IAPT)
Deirdre Moroney
 Associate Service Director

Brent
Eric Craig
 Borough Director (acting)
Dr Bill Tiplady
 Borough Clinical Director

Harrow
Tanya Paxton
 Borough Director
Dr Tanya Thirkell
 Borough Clinical Director

Kensington & Chelsea
Ann Sheridan
 Borough Director
Dr Claire Woolcock
 Borough Clinical Director

Westminster
Ela Pathak-Sen
 Borough Director (interim)
Dr Graham Behr
 Borough Clinical Director

Learning Disabilities
Dr Saadia Arshad
 Lead Consultant
 Psychiatrist (Interim)
Vacant
 Lead Psychologist (Interim)
Jo Carroll
 Head of Service

Talking Therapies (IAPT)
Hillingdon
Eleanor Cowen
 Clinical Lead
Milton Keynes
Dr Neil Smith
 Clinical Lead
Simon Warren
 Manager

Brent
Eric Craig (Inpatient)
 Deputy Borough Director

Harrow
Gail Burrell (Community)
 Deputy Borough
 Director (acting)

Kensington & Chelsea
Jim O'Donnell
 Deputy Borough
 Director (Grenfell)

Westminster
**Claire Symons
 (Community)**
 Deputy Borough Director

4

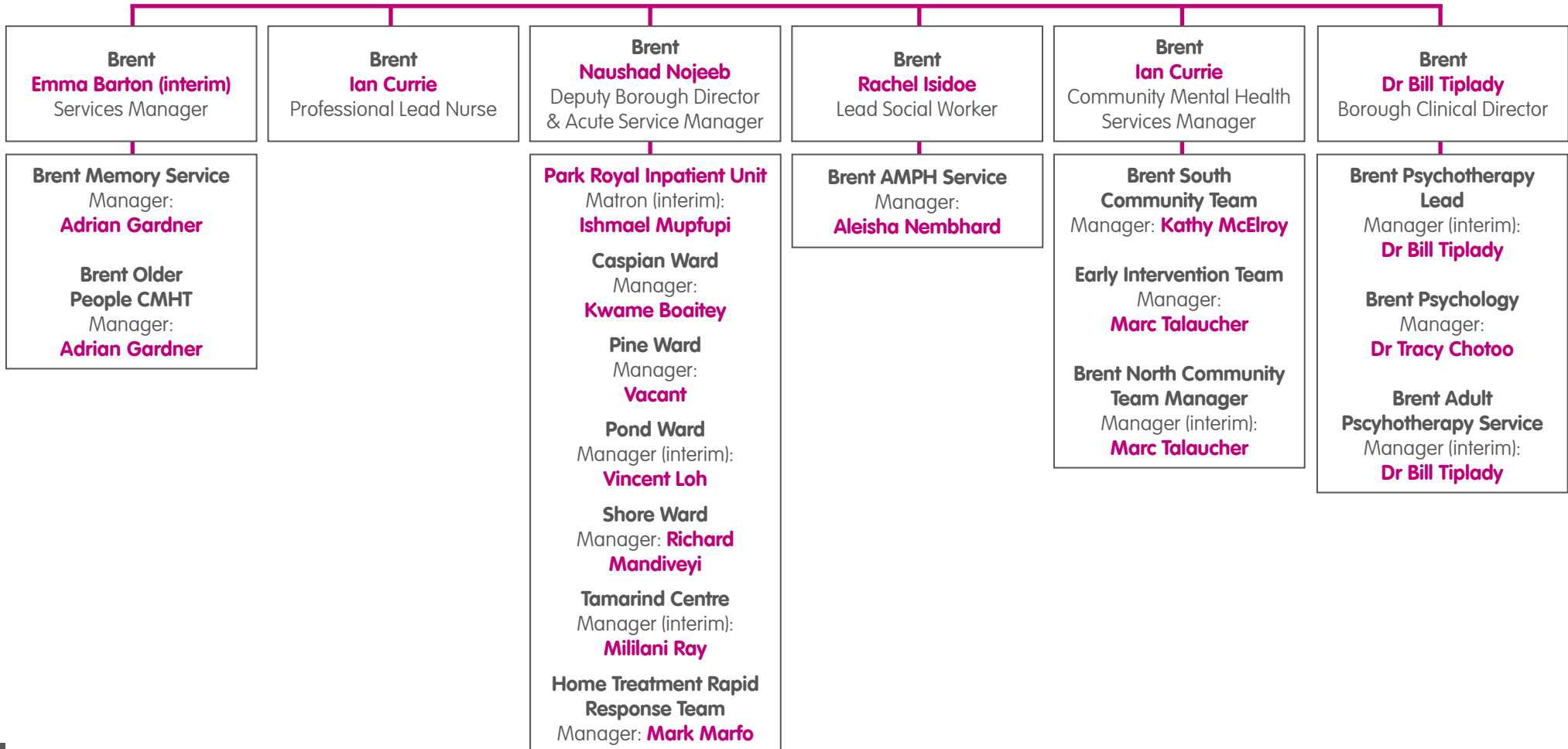
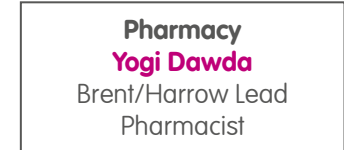
5

6

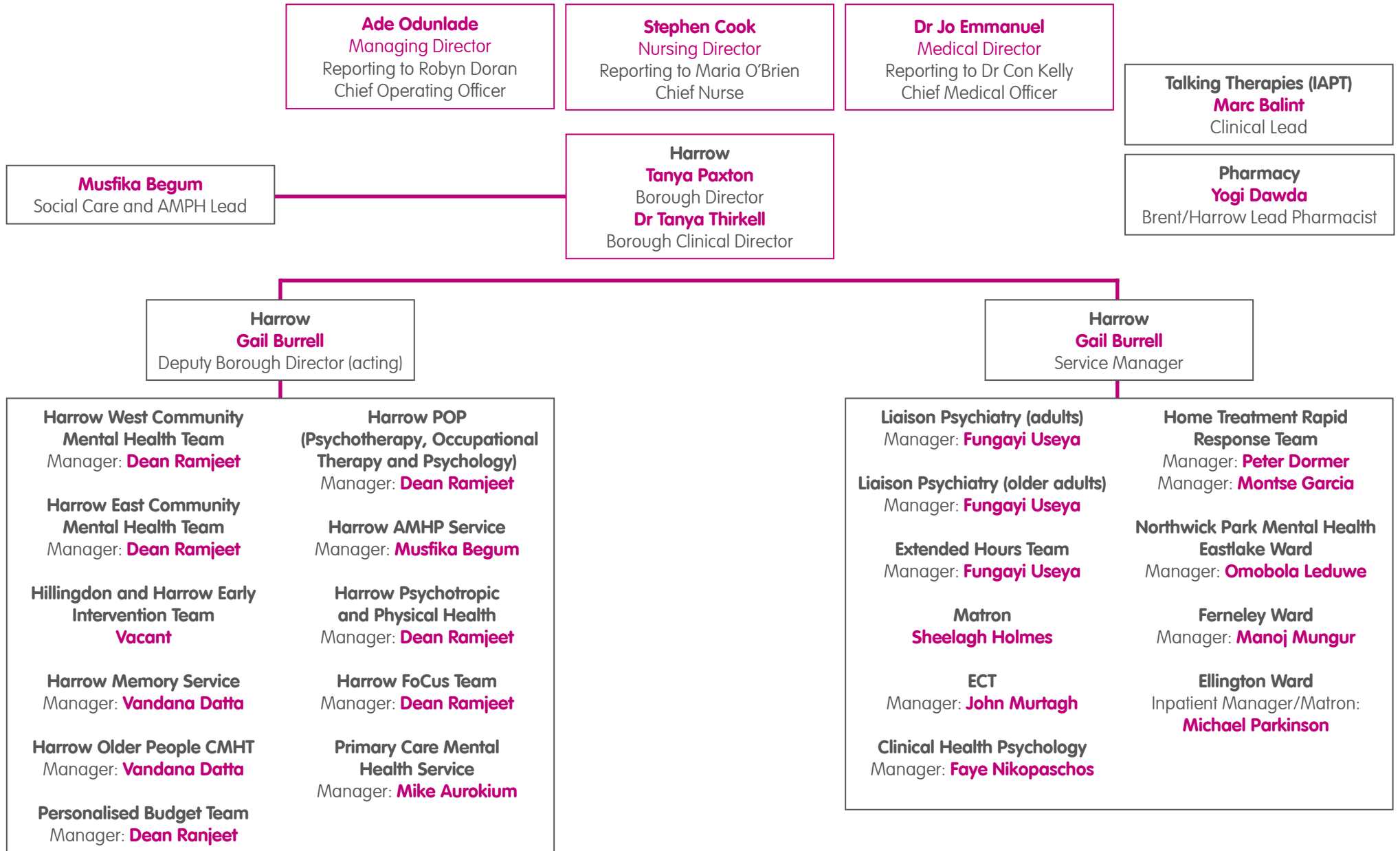
7

8

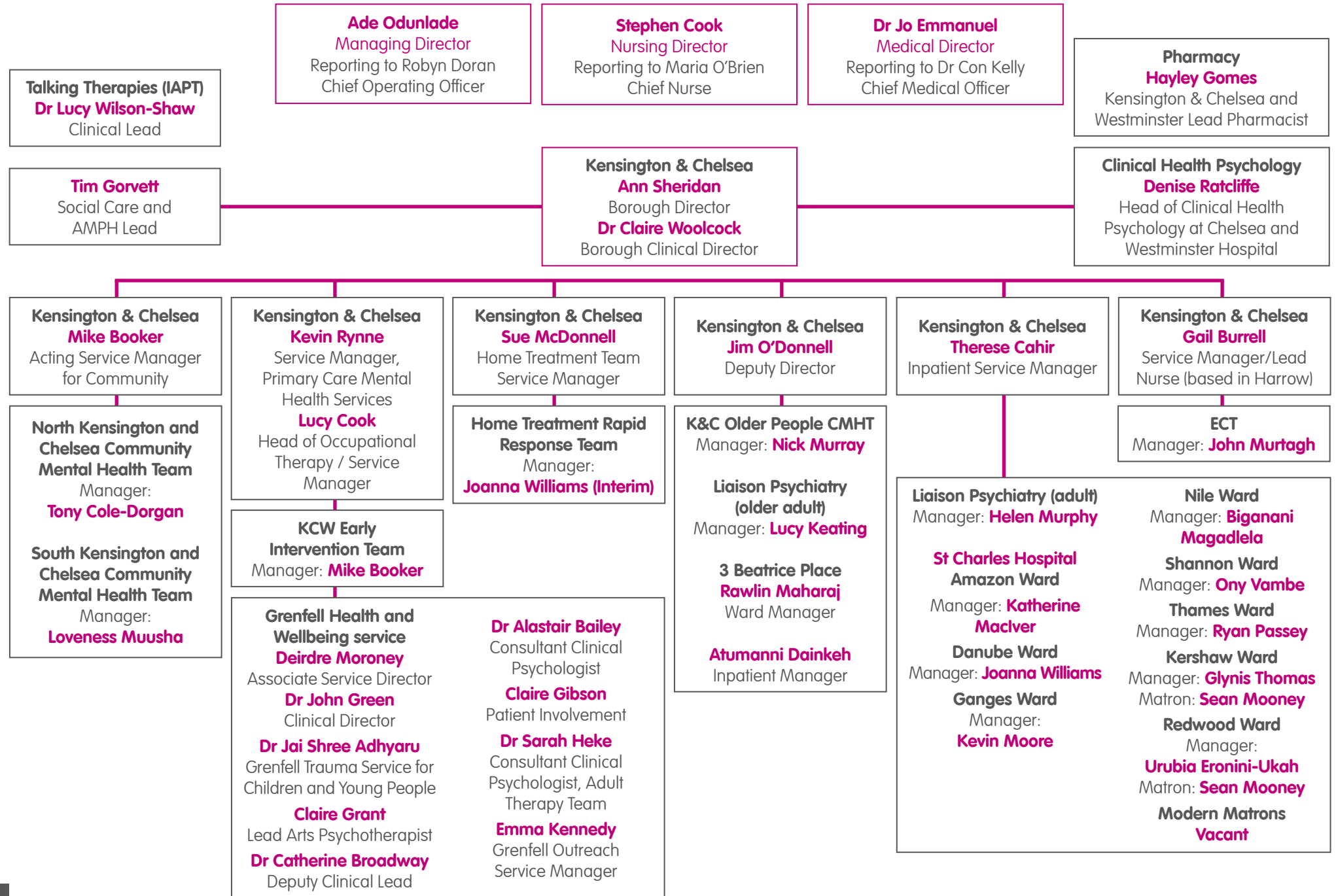
Jameson division



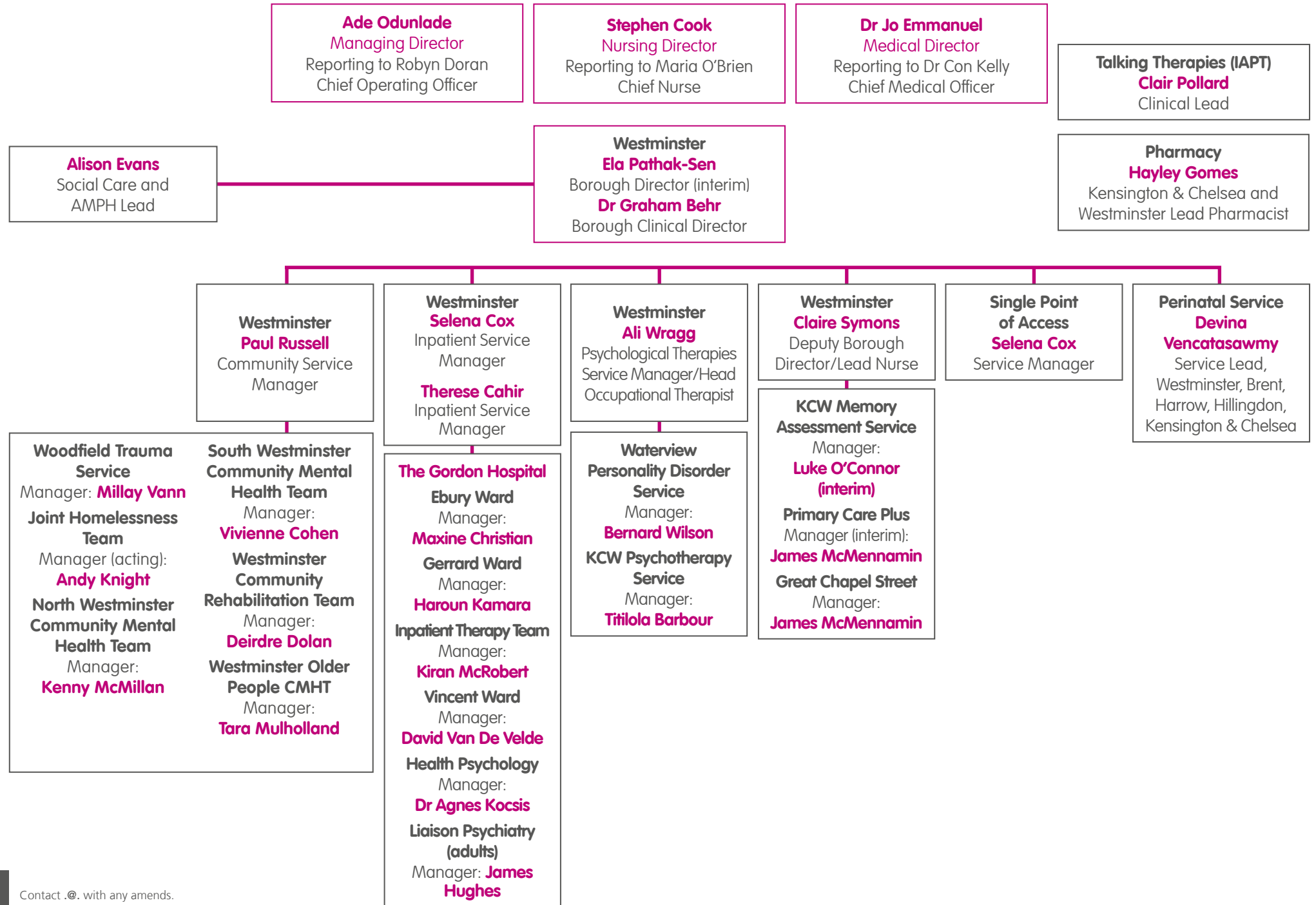
Jameson division



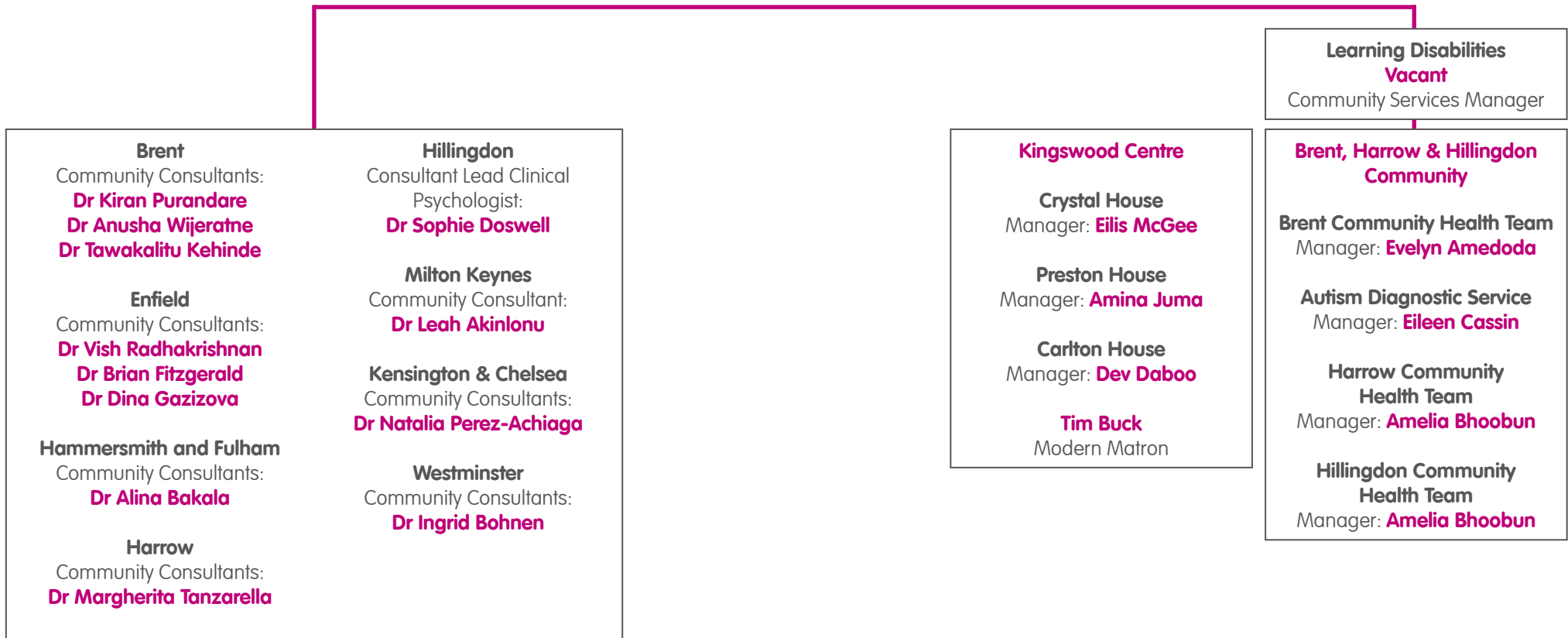
Jameson division



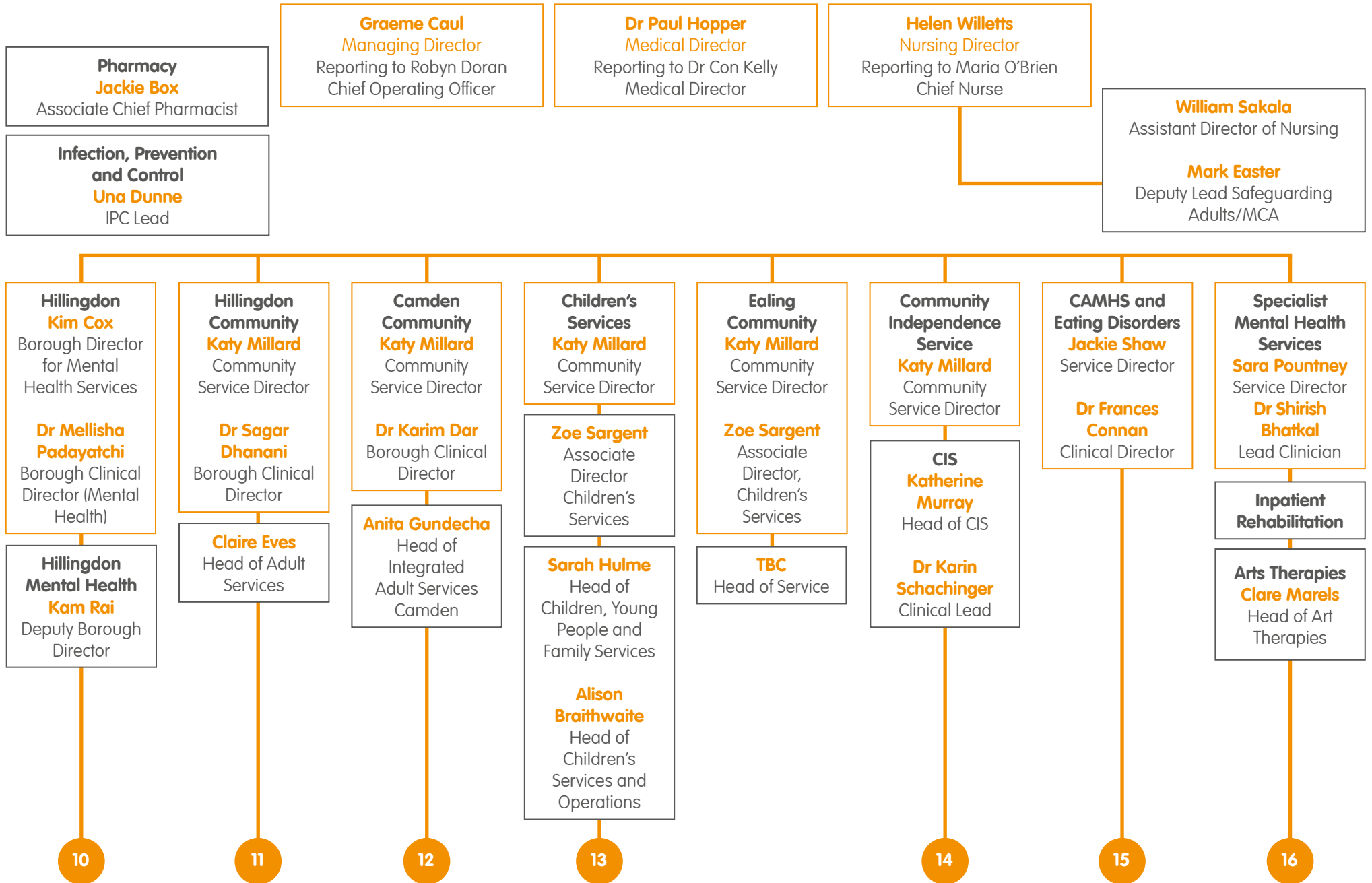
Jameson division



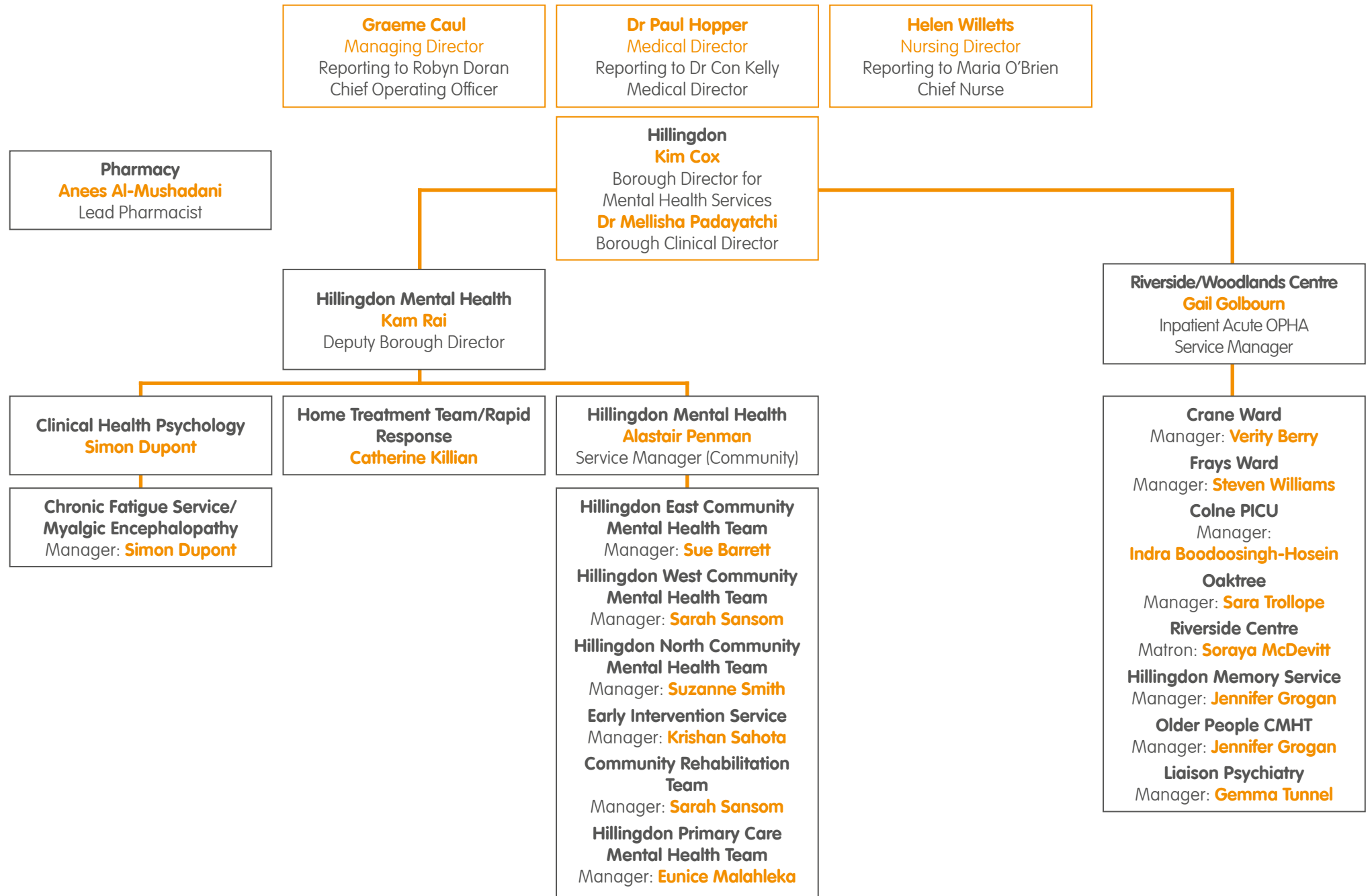
Jameson division



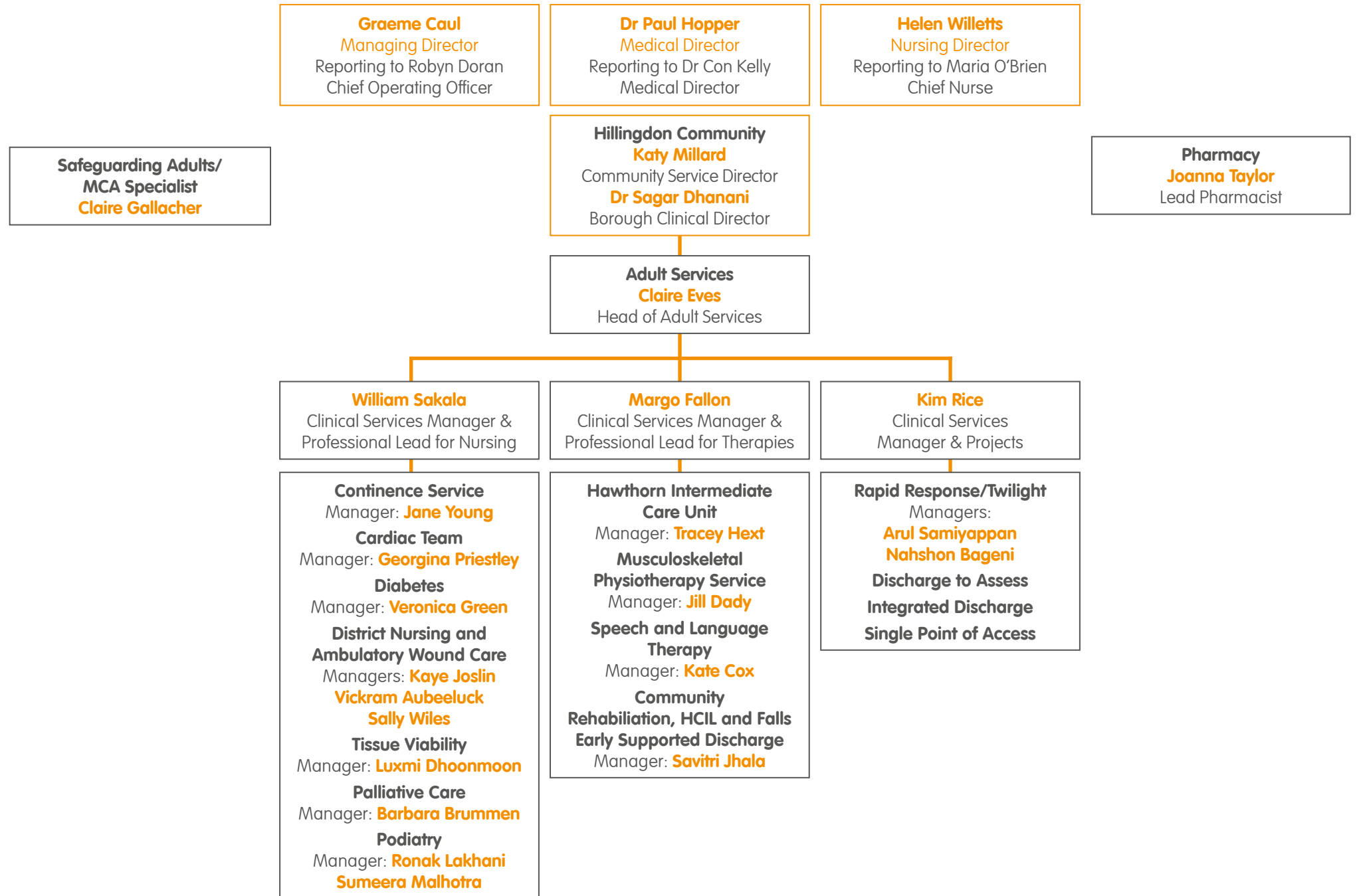
Goodall division



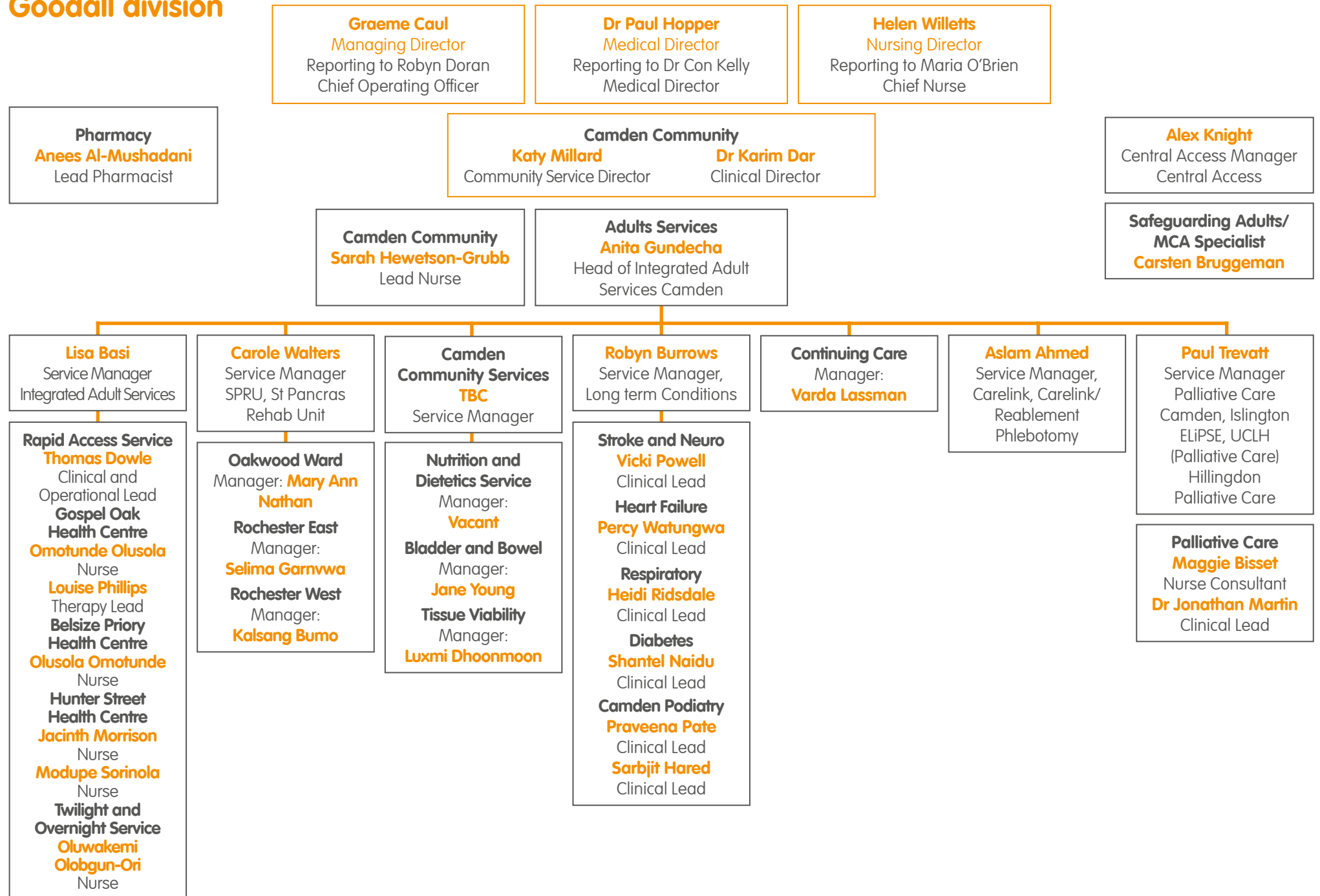
Goodall division



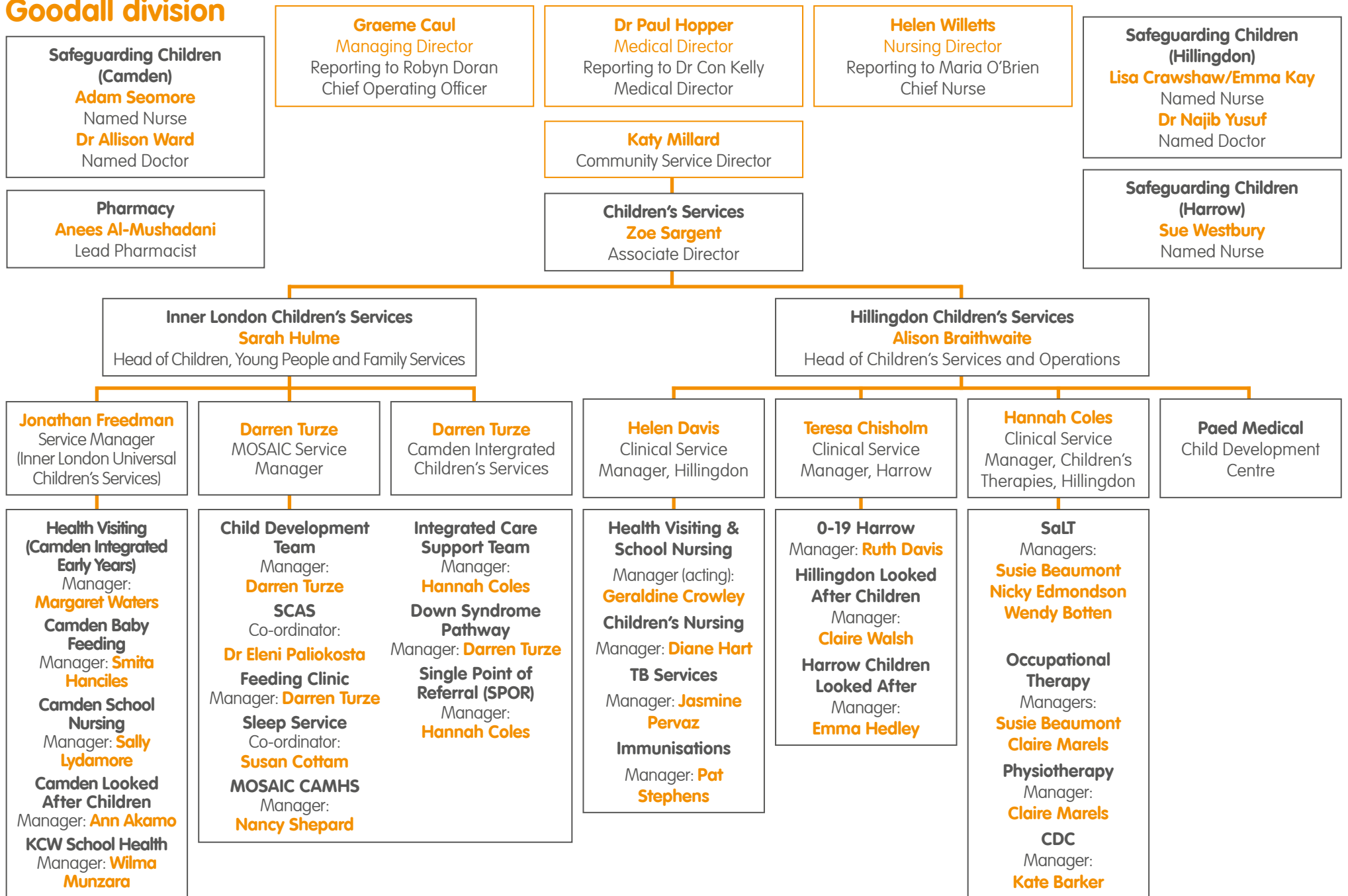
Goodall division



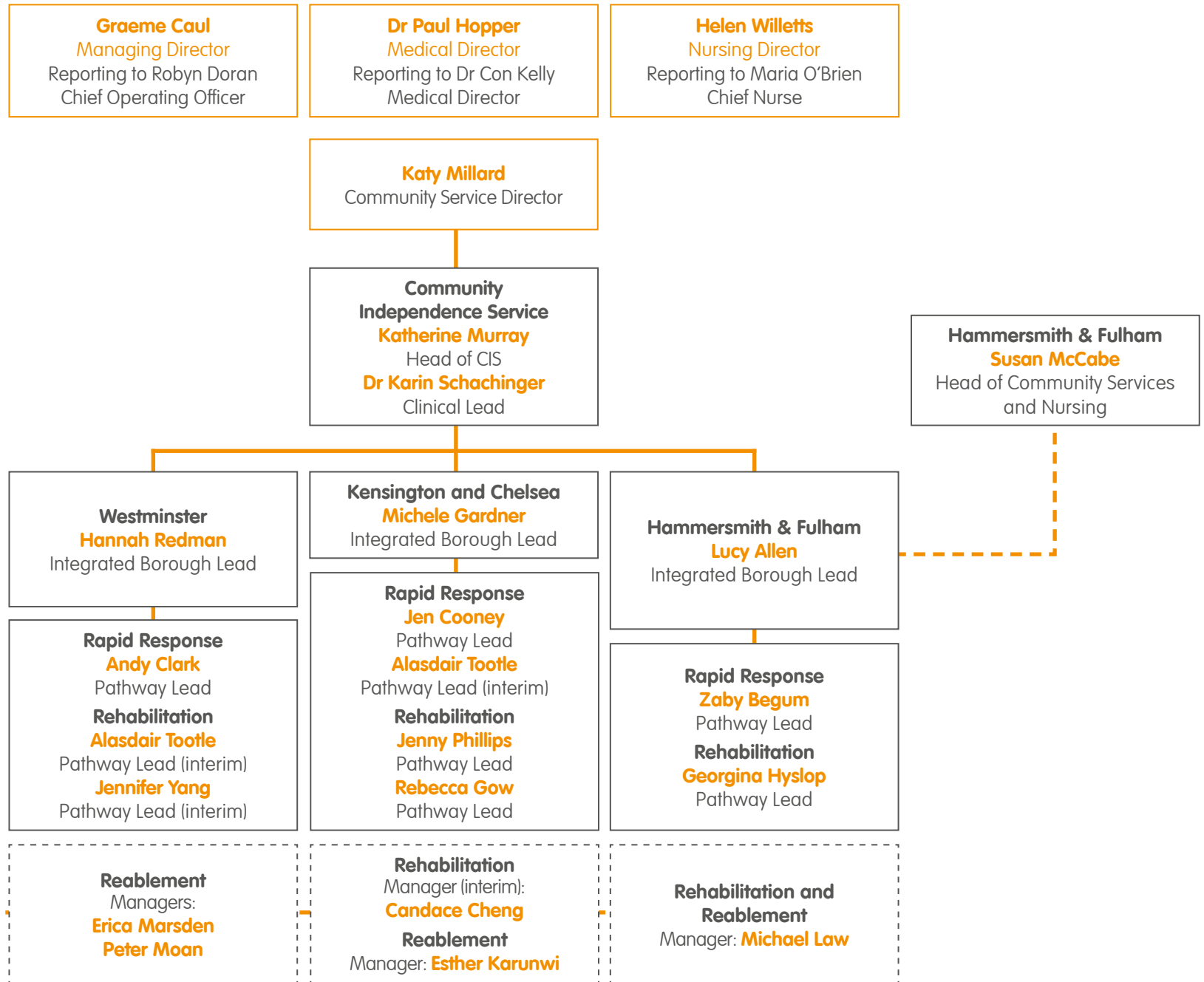
Goodall division



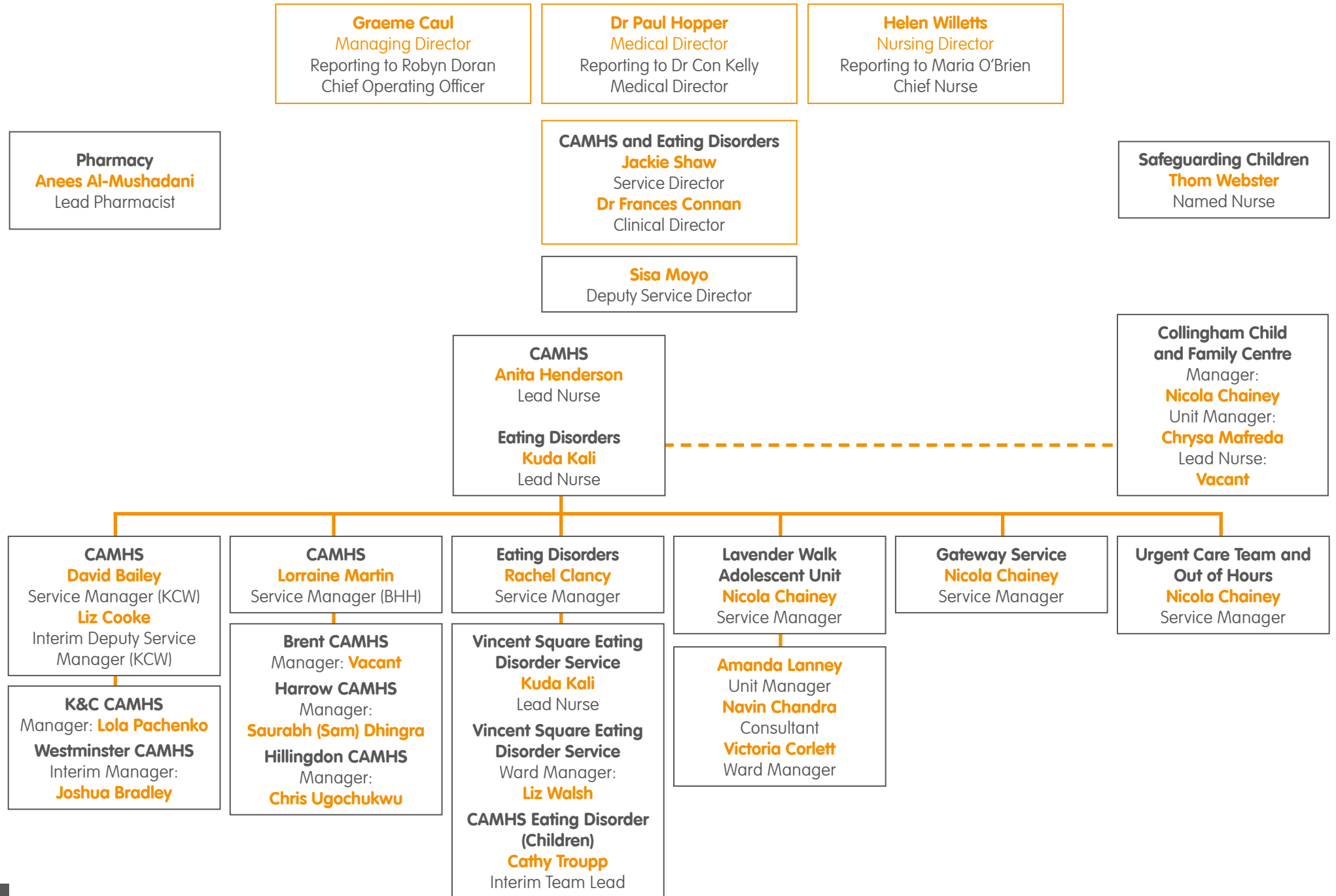
Goodall division



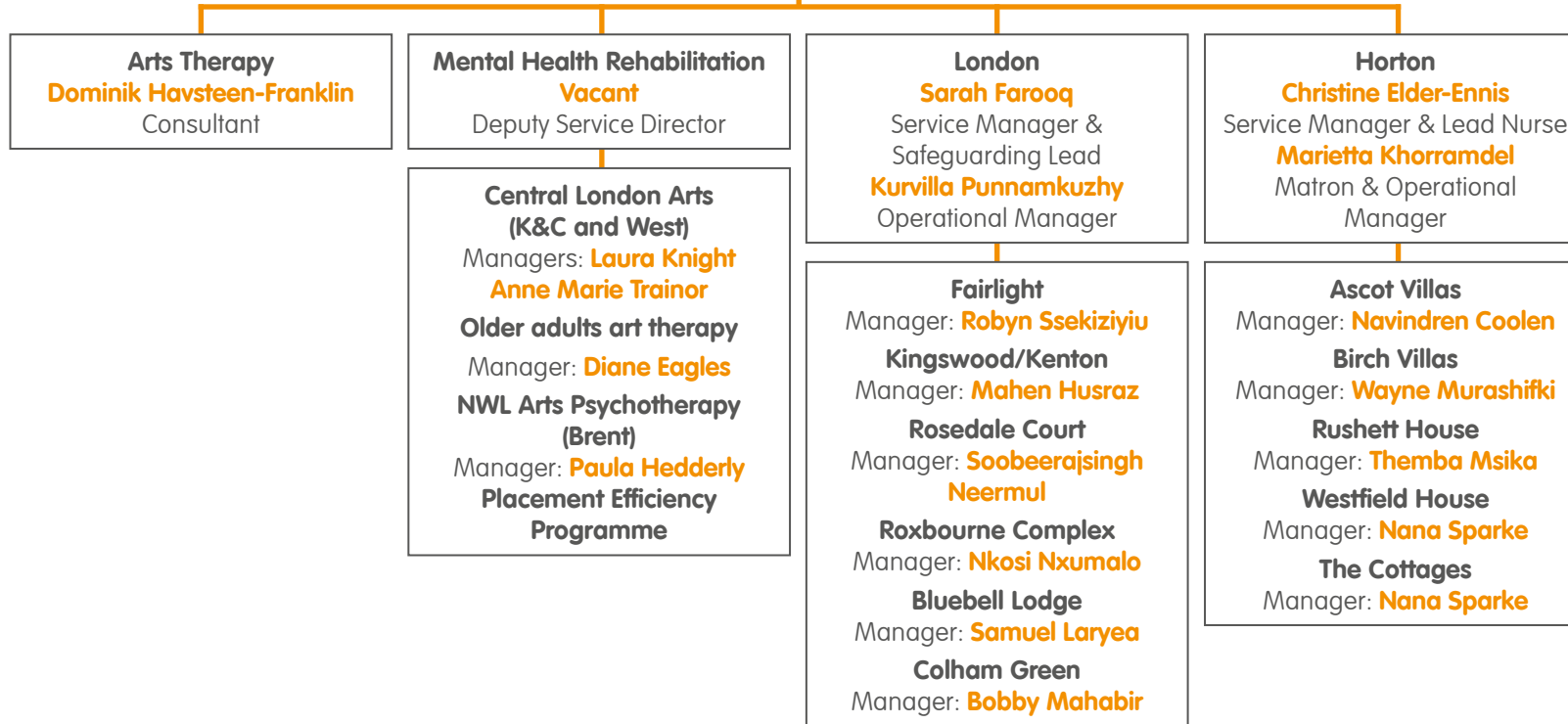
Goodall division



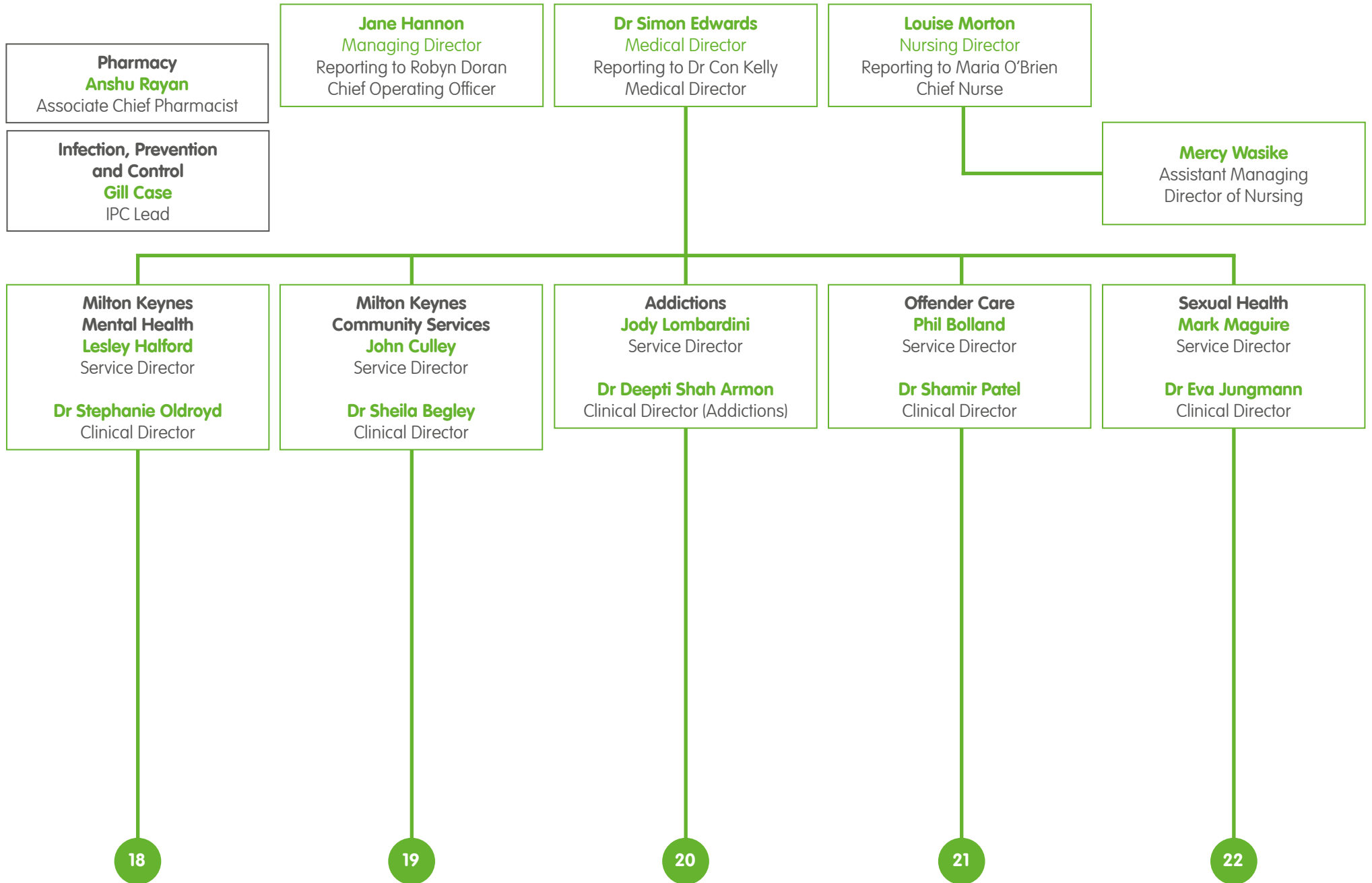
Goodall division



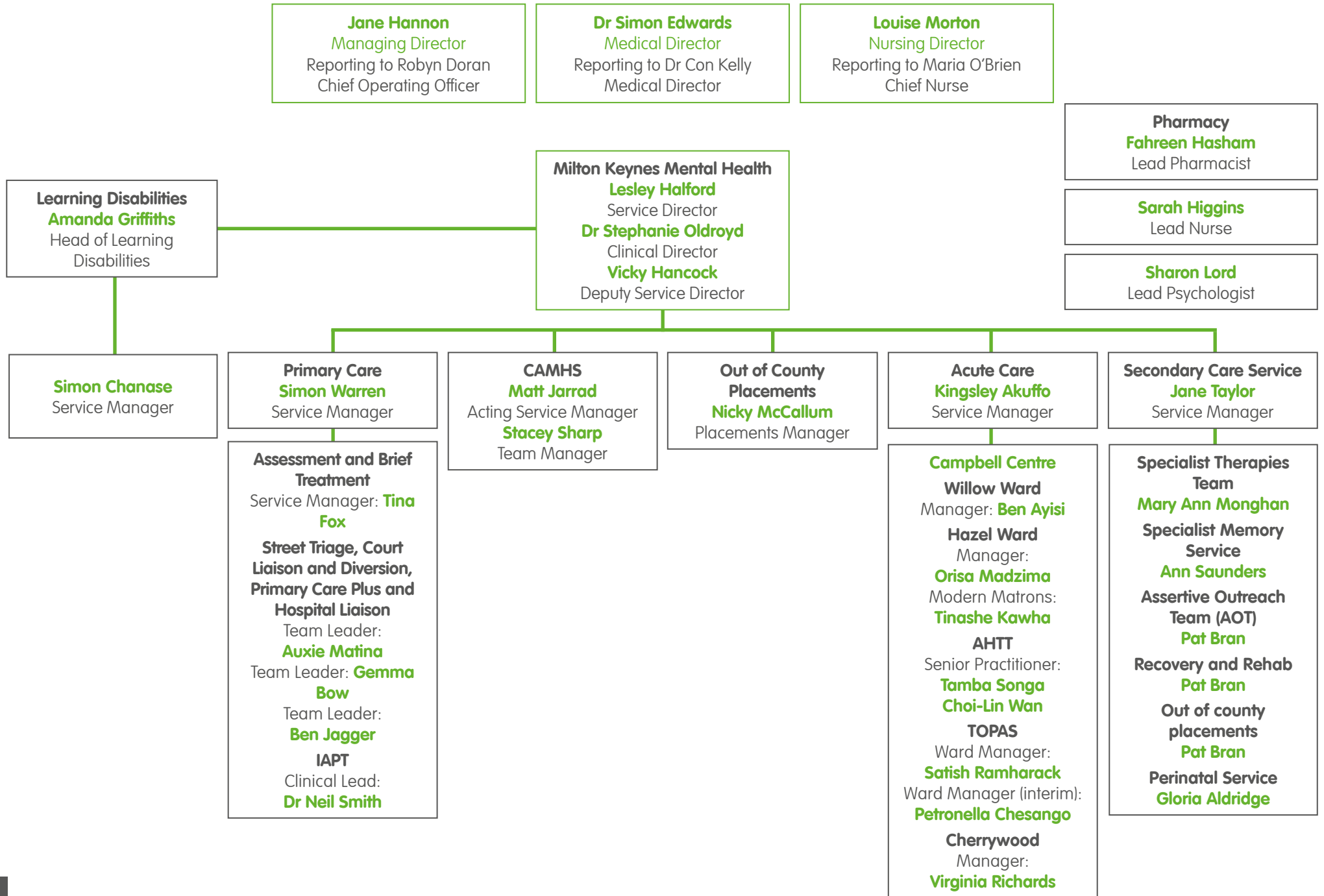
Goodall division



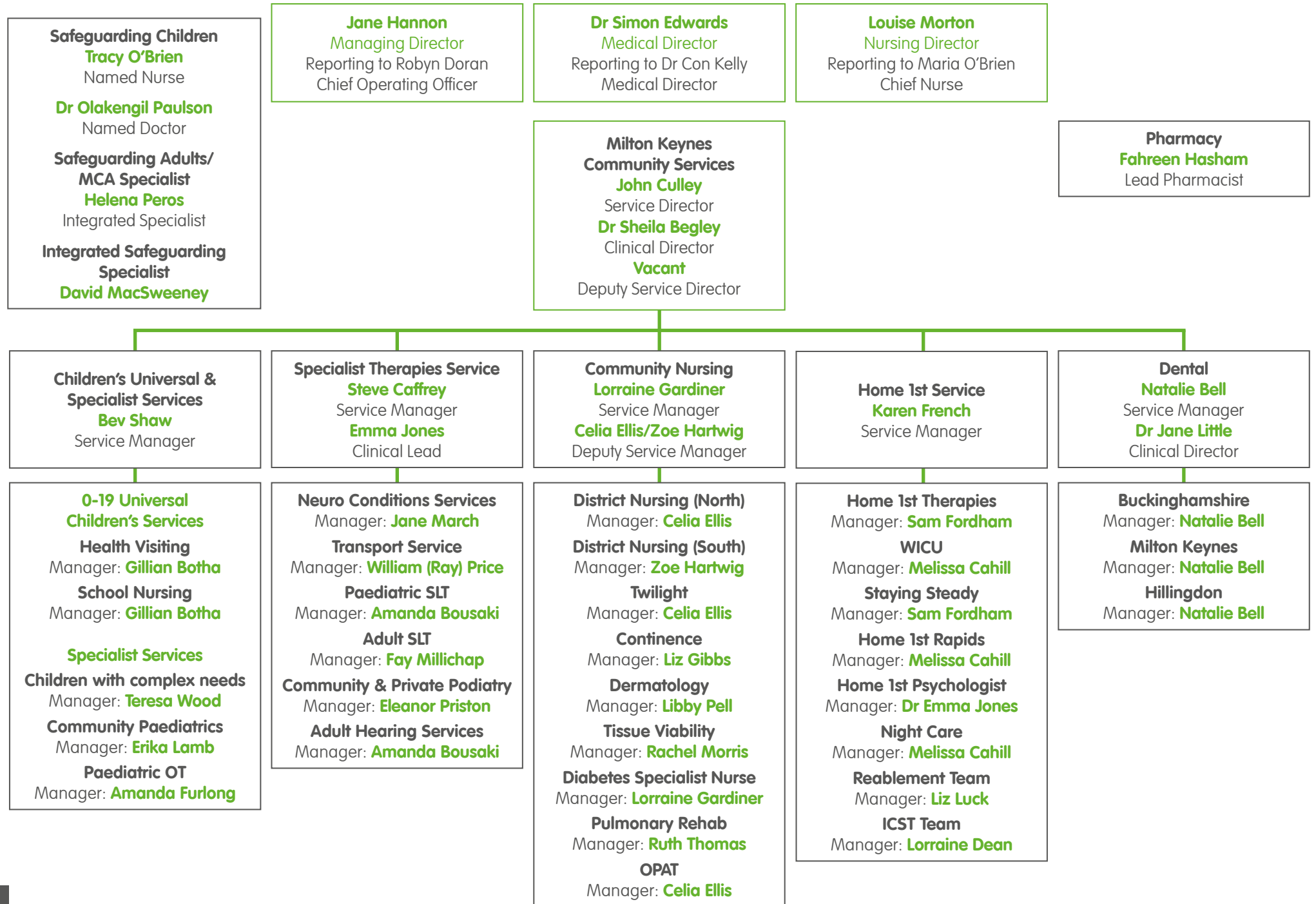
Diggory division



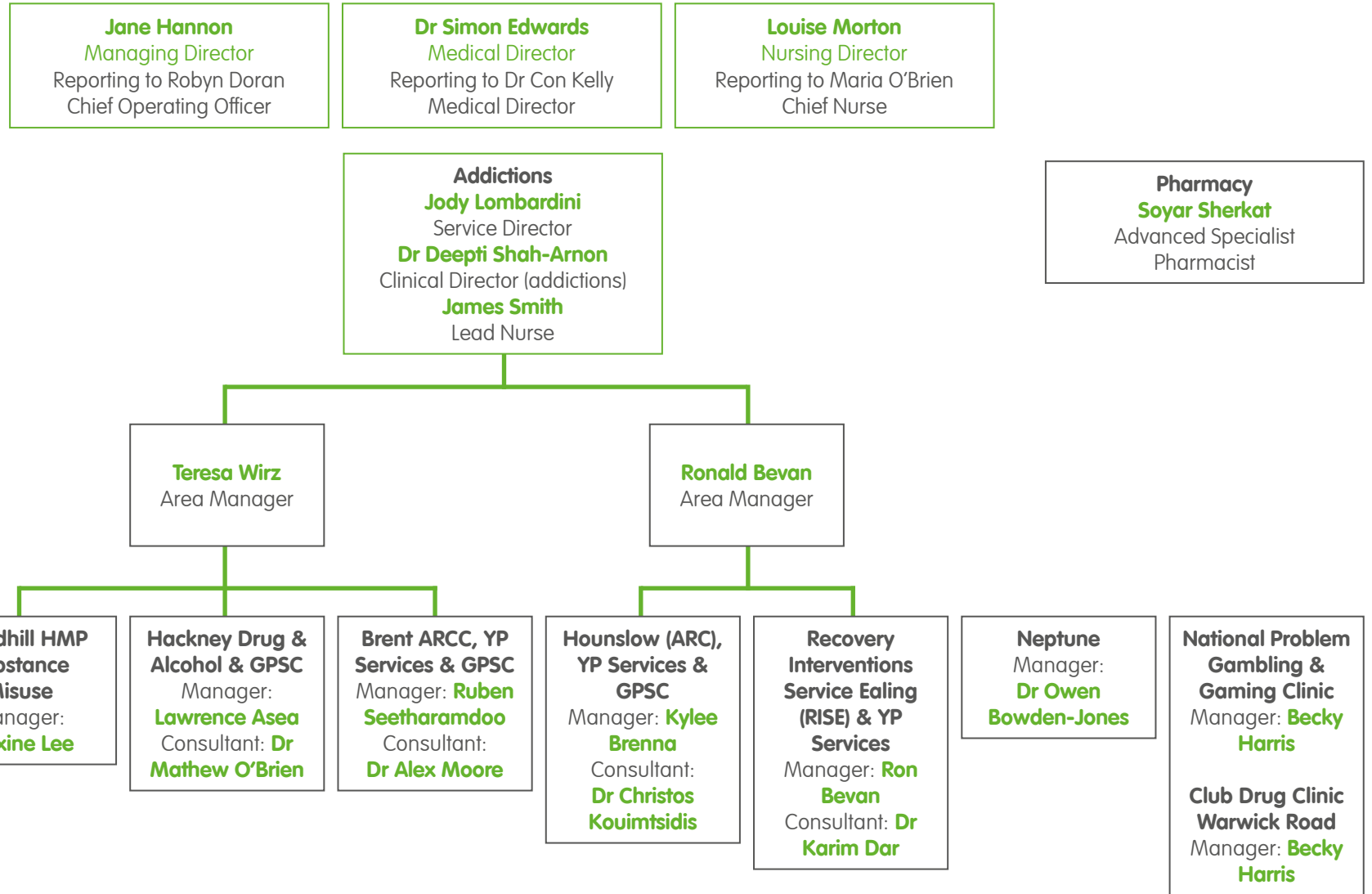
Diggory division



Diggory division



Diggory division



Diggory division

Jane Hannon
 Managing Director
 Reporting to Robyn Doran
 Chief Operating Officer

Dr Simon Edwards
 Medical Director
 Reporting to Dr Con Kelly
 Medical Director

Louise Morton
 Nursing Director
 Reporting to Maria O'Brien
 Chief Nurse

Pharmacy
Marta Pitarch
 Lead Pharmacist

Offender Care
Phil Bolland
 Service Director
Dr Shamir Patel
 Clinical Director

**Heathrow Immigration
 Removal Centres**
Zoe Newton
 Head of Healthcare (Interim)
Emma Donoghue
 Head of Primary Care
Mark Adorjolo
 Head of Mental Health

Offender Care
Deb Simons
 Regional Operational
 Manager & Lead Nurse

Offender Care
Stella Simpson
 Regional Operational Manager

Offender Care
Dr Sarah Allen
 Lead Psychologist

Offender Care
Vacant
 Regional Operational Manager
Sue Browning
 Senior Manager

Offender Care
Lloyd Kristian
 Regional Operational Manager

Woodhill
Jo Rance
 Head of Healthcare
Mags Halliday
 Primary Care Lead
Helen Spencer-Hicks
 Mental Health Lead

YOI Cookham
Sally-Ann Morris
 Service Manager
HMP Winchester
Rebecca Clooney
 Head of Healthcare
Medway STC
Sally-Ann Morris
 Service Manager

Park Royal Secure Services
 Manager: **Denise Cox**
**Court and Police Liaison and
 Diversion Service**
 Manager: **Andy Crowther**
**KCW Community Forensic
 Services**
 Manager: **Chat Patel**

HMP Send
Tracy-Ann Hughes
 Head of Healthcare
HMP Downview
Penny Leese
 Head of Healthcare
Vacant
 Mental health Manager
HMP Bronzefield
Tracey-Ann Munn Hughes
 Service Lead
HMP Highdown
Kristian Lane
 Service Lead
HMP Coldingley
Debra Chamberlin
 Head of Healthcare

Diggory division

