



POLICE



POLICE

Operation [REDACTED]

Shrewsbury Town v Charlton Athletic Sunday 13th May 2018 Kick Off: 1715hrs

Written by	Helen Faulkner
Role	Operations Planner

Version	Date	Reason for Update	Author (Rank/Collar No)
0.1	09/05/2018	Initial Draft	Helen Faulkner

CONTENTS

		PAGE
1	INFORMATION	
	1.1 Background Information	3
	1.2 Intelligence Products	4
	1.3 Strategic Intention	4
	1.4 Silver Tactical Plan	N/A
	1.5 Table of Appendices	5
2	ROLES and RESPONSIBILITIES (NATURE OF DEPLOYMENT)	
	2.1 Command Structure	6
	2.2 Media	7
	2.3 Intelligence	7
	2.4 Negotiation	N/A
	2.5 Community and Diversity Impact	8
	2.6 PSU Serials	8
	2.7 Dog Support	8
	2.8 Evidence Gathering	8
	2.9 Traffic Management	8
	2.10 Air Operations	8
	2.11 Firearms	N/A
	2.12 Custody	8
	2.13 Investigation	8
3	ADMINISTRATION	
	3.1 Risk Assessments specific to the Operation (Operational Guide)	9
	3.2 Legislation specific to the Operation (Operational Guide)	9
	3.3 Dress Code	9
	3.4 Briefing	9
	3.5 Debrief Process	9
	3.6 Finance	9
	3.7 Welfare	9
	3.8 Catering	10
	3.9 Significant Locations (Operational Guide)	10
	3.10 Complaints Against Police	10
4	COMMUNICATIONS	
	4.1 Talk Group Allocation	10
	4.2 Operational Requirements	10
	4.3 Social Media	10
5	HUMAN RIGHTS (If not documented in strategic document)	11

1 – INFORMATION

1.1

Background Information

On Sunday 13th May 2018 Shrewsbury Town Football Club will play Charlton Athletic in the Sky Bet League 1 play offs.

This has been assessed and classified as a Category B match: 1 PSU.

The game will be played at Shrewsbury's Montgomery Waters Meadow Stadium, Otley Road, Shrewsbury, SY2 6ST. The game will kick off at 17:15 hours and will be shown live on Sky Sports.

Attendance is likely to be a sell-out (approx. 9,500) but will depend on the outcome of the first leg of the play off, which will be played at Charlton's Valley Stadium on Thursday 10th May.

Charlton fans have been allocated 1500 tickets and these are likely to all be sold in advance.

This fixture is a designated match for the purposes of the sporting Events (Control of Alcohol etc.) Act, 1985. The football Offences Act 1991 and part II of the Football Spectators Act 1989 do apply.

STFC home and away shirts:



Charlton Athletic home and away shirts:



A full updated intelligence briefing, pertinent to both clubs and this fixture will be provided prior to the fixture. **(Appendix A)**

Alcohol Sales

Alcohol will be on sale inside the stadium to all supporters not in view of the pitch. Bars will open at 15:45hrs. The fan zone bar outside the stadium will open at 15:15hrs.

Shrewsbury Town Centre Pubs

Genuine fans from both groups are welcome in small numbers in any of the town centre pubs.

No public houses will receive groups of designated "risk supporters" from police under police escort under any circumstances, and town centre pubs will alert each other of such via the Pub Watch communication scheme.

	<p>Some public houses will only admit “regular customers” on match days.</p> <p><u>Area of Operation</u></p> <p>This operation occurs principally across F local policing area and extends to the following key locations:</p> <ul style="list-style-type: none"> - Shrewsbury’s Montgomery Waters Meadow Stadium - Shrewsbury town centre - Shrewsbury railway station - Immediate surrounding arterial road network <p><u>Additional Information</u></p> <p>Shrewsbury Town Football Club are responsible for the safety of all spectators both inside the stadium and those wishing to enter the stadium, within the defined curtilage of the ground.</p> <p>Responsibility for the stadium, its footprint (as defined by the curtilage of the ground) and any disorder thereon is the responsibility of the Football Club through their appointed Safety Officer.</p> <p>No pre planned request has been made for police resources in the ground.</p> <p>Any request for police resources within the stadium (in the case of serious spontaneous disorder) will be made by the Safety Officer for Shrewsbury Town Football Club to the PSU Commander for tactical consideration.</p> <p><u>Travel Information</u></p> <p>Car – Travel by car will take approx. four hours. It is likely the majority of Charlton fans will travel by private vehicle.</p> <p>Coach – One official coach minimum travels to all away fixtures. Obviously if the fixture is significant then larger numbers of travelling coaches and possibly mini-buses can be anticipated. The local dialling code for Charlton is 020.</p> <p>Train – There are regular trains from London Euston into Shrewsbury with one arriving approx. every 30 mins.</p> <p>Arrival (at Shrewsbury): 14:43, 15:19, 15:44, 16:22 Depart (from Shrewsbury): 19:42, 20:23, 21:31</p>
1.2	Intelligence
	A full updated intelligence briefing pertinent to both clubs and this fixture will be provided prior to the fixture (Appendix A).
1.3	Strategic Intention
	<ol style="list-style-type: none"> 1. Adopt an intelligence-led, proportionate approach to the policing of football events to ensure that public safety remains paramount throughout the planning and execution of the operation. 2. Gather intelligence with a view to lawfully disrupting the activities of those involved in organising disorder. 3. Arrest and prosecute offenders including the use of banning orders as a means of effectively reducing violence on match days and subsequently reduce policing activity. 4. Respect the human rights of all involved and take into account the rights of individuals going about their lawful business or activity on the dates when football matches take place. 5. Provide reassurance and high profile policing to the public and spectators

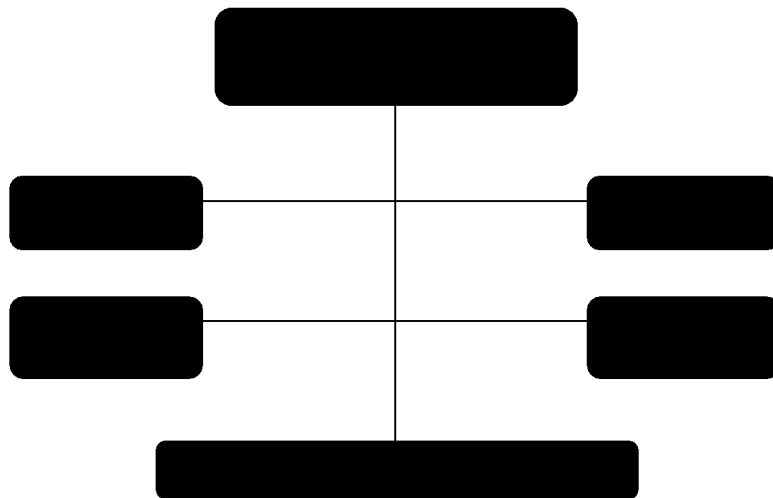
	<p>based on the intelligence assessment.</p> <ol style="list-style-type: none"> 6. Ensure effective liaison and intelligence sharing in Warwickshire Police and West Mercia Police and between other forces where necessary. 7. Maintain existing policing resilience and effectiveness on match days. 8. Ensure that options to implement contingency plans are considered. <p><u>Policing Style</u></p> <p>There is a generic Silver plan for this operation. The policing style is as follows:</p> <p>The presumption for this policing operation will be that the overwhelming majority of football fans wish to support their team in a law abiding, peaceful and celebratory manner. If intelligence or circumstances indicate otherwise, intervention will be targeted only against those necessary. By adopting a visible and approachable policing style those considering engaging in criminal activity may be influenced not to do so.</p> <p>The policing operation will not specifically target any individual, group or section of the public unless there is evidence that such intrusion is required to meet the core principles of policing.</p> <p>All staff engaged in this operation must present themselves in a professional manner, in the face of the likely changes in behaviour caused by alcohol and football supporter volatility. They will be required to treat all members of the public with dignity and respect and where necessary they will positively and decisively enforce the law.</p> <p>Officers should at all times act in an impartial, balanced and fair way and endeavour to engage with all parties to reduce tension, prevent conflict and gather intelligence.</p> <p>Effective engagement with supporters and other persons directly affected by any decisions taken by police commanders should ensure as much as reasonably possible that there are 'no surprises'.</p>
1.4	Tactical Plan
	Not applicable for this operation.
1.6	Table of Appendices

Appendix	Title
A	INTELLIGENCE UPDATE
B	OPERATIONAL GUIDE
C	RESOURCES
D	STADIUM CONTINGENCY PLAN
E	GROUND RISK ASSESSMENT

2- METHOD - Roles and Responsibilities (Nature of Deployment)

2.1 Command Structure and Resourcing

- 1 PSU Commander
- PSU Serials
- EGT Team
- Dog Handlers
- OPU Motorcyclists
- Combined Prisoner Transport/Interview Team (2 officers)
- Football Police Spotter Teams (2 WMP / 2 Metropolitan Police)
- Intelligence officers
- Logistics officers



The operation will consist of three phases:

- Phase One – Conclusion of briefing until kick-off.
- Phase Two – Kick-off to fifteen minutes before final whistle.
- Phase Three – Fifteen minutes before final whistle until stand down.

	<p>Staff will be briefed by the PSU Commander as follows:</p> <p>13:00hrs in the Athena briefing room, first floor Shrewsbury Police Station.</p> <p>The PSU Commander, Insp Alex Warner, will outline his deployment plan.</p> <p><u>PHASE ONE – Pre match</u></p> <p><u>PSU</u> [REDACTED]</p> <p>Responsibility for policing Shrewsbury town centre and approaches to Shrewsbury Town Football Club.</p> <p><u>PHASE TWO – During the Match</u></p> <p>The overall responsibility for crowd safety within the stadium (as defined by the curtilage) rests with the club’s Safety Officer. Police resources will be deployed to support the club’s officials at the discretion of the PSU Commander, following an official request from the club’s safety officer.</p> <p>During the match, officers will continue to monitor any groups that have not attended the game and deal with any incidents of disorder. A presence will be maintained on patrol at all times whilst officers take refreshments / toilet breaks at Shrewsbury Police Station or Redwood House.</p> <p><u>PSU</u> [REDACTED]</p> <p>Responsibility for policing Shrewsbury town centre and approaches to Shrewsbury Town Football Club.</p> <p><u>PHASE THREE – End of Match</u></p> <p>At the conclusion of the match, stewards will allow Charlton supporters to leave the stadium via the rear of the North Stand onto the main car park where any coaches will be parked. Non coach travelling supporters will leave via the main gate onto Oteley Road. Other Shrewsbury supporters can leave via a pathway at the rear of the West Stand along the side of the railway line. This pathway leads onto Oteley Road and also onto the Meole Brace Retail Park.</p> <p><u>PSU</u> [REDACTED]</p> <p>Responsibility for policing Shrewsbury Town Centre and approaches to Shrewsbury Town Football Club.</p>
2.2	Media
	<p>Any press enquiries or press releases will be dealt with by the Duty Inspector who will consult with the PSU Commander.</p> <p>Consideration will be given to utilising Warwickshire Police & West Mercia Police press officers if appropriate.</p>
2.3	Intelligence
	<p>A full intelligence document will be provided prior to this operation.</p> <p>See Appendix A.</p> <p>On the day of the operation, [REDACTED] Metropolitan Police football spotters will work with [REDACTED] West Mercia Police football spotters.</p>

2.4	Negotiation
	Not applicable for this operation.
2.5	Community and Diversity Impact
	A Community Impact Assessment is not required at this stage but will be considered throughout the operation. In the event of a critical incident, a Post Incident Community Impact Assessment will be undertaken by the Duty/ Geographic Inspector responsible for the Shrewsbury area.
2.6	PSU Serials
	Serials to police the outside of the ground and Shrewsbury town centre (as per 2.1).
2.7	Dog Support
	█ handlers are available to assist this operation (as per 2.1). They will support the PSU serials in this operation.
2.8	Evidence Gathering
	█ Evidence Gathering Team will be deployed to this operation in addition to Police Football Spotters. They will be on duty █ █ Where footage is obtained which may be either evidentially valuable or may be used for intelligence purposes or to support a Sec 14B banning order, then all officers obtaining such evidence should provide these to the Prisoner Process officers if an arrest has been made or to █ (Intelligence Officer) before going off duty.
2.9	Traffic Management
	█ Police Motorcyclists will be available to identify supporters' coaches on the approach to Shrewsbury and assist as requested by the PSU Commander.
2.10	Air Operations
	NPAS assets are not specifically assigned to this operation. If required they can be requested through standard operating procedures.
2.11	Firearms
	Firearms assets are not specifically assigned but can be requested via the OCCI, Hindlip, under standard operating procedures.
2.12	Custody
	All prisoners from this operation are to be conveyed to Shrewsbury Custody Suite. Both the transport and interview of any prisoners will be carried out by the combined Transport/Interview Team (█ officers). The PSU Commander will liaise with the Duty Inspector should further support be required with regards to processing any prisoners.
2.13	Investigation
	Arresting officers must note that it is their responsibility to ensure that all paper work, including witness statements, are provided prior to going off duty. Any variation to this policy must be sanctioned by the PSU Commander . Where necessary the paper work will indicate that it was a Football Related Offence for the purpose of the Football Spectators Act 1989. Additional Guidance – Prisoner Process / Banning Orders. Whenever there is sufficient evidence <i>and it is proportionate to do so</i> , offenders will be brought before the courts for football related offences.

	<p>Guidance re Banning Orders</p> <p>Where there is intelligence available that the offenders are involved in football related disorder, or intelligence is available to support their association to known risk groups, or it is clear that the offence was heavily weighted to be a football related offence CPS <u>will</u> apply to the court for a football banning order.</p> <p>██████████ is the football intelligence officer for the game. He can offer guidance in relation to banning order procedures and protocols, and sometimes supporting evidence, along with supporting correspondence from Shrewsbury Town Football Club.</p> <p>In these circumstances it will be desirable to bail offenders whilst secondary and supporting information / intelligence and supporting statements can be obtained.</p> <p>To effectively investigate offences, officers need to consider disclosure, Body Worn Video footage, corroboratory evidence from Stewards / Marshalls and members of the public, and if available CCTV to assist arrest.</p>
--	--------------------------------------------------------------------------------------------------------------------------------------------------------------------------------------------------------------------------------------------------------------------------------------------------------------------------------------------------------------------------------------------------------------------------------------------------------------------------------------------------------------------------------------------------------------------------------------------------------------------------------------------------------------------------------------------------------------------------------------------------------------------------------------------------------------------------------------------------------------------------------------------------------------------------------------------------------------------------------------------------------------------------------------------------------------------

3 - ADMINISTRATION	
3.1	Risk Assessments specific to the operation
	There is a site specific Risk Assessment for Shrewsbury Town Football Club (Appendix E)
3.2	Legislation specific to the operation (if required)
	Refer to Operational Guide provided to the officers (Appendix B)
3.3	Dress Code
	<p>The use of body worn video has been authorised by Silver.</p> <p>All PSU officers will wear Code 2, with long sleeved fluorescent blouson jackets, either lightweight or rainproof (PSU kit bag with pads and NATO helmet to be on the PSU van). At this stage, the carrying of Public Order batons has not been authorised. They should be readily available on the PSU carriers.</p> <p>All non PSU resources will wear normal street operational uniform.</p> <p>All staff will wear / carry the personal protective equipment required for their particular role. For police officers this will be: stab resistant protective vest, baton, PAVA incapacitate, together with hand cuffs.</p>
3.4	Briefing
	Officers will be briefed at 1300hrs in the Athena briefing room at Shrewsbury Police Station, SY2 5RW, by the PSU Commander.
3.5	Debrief
	<p>A hot debrief will be held by the PSU Commander at the conclusion of the deployment to ensure that any learning or issues are captured and addressed for future events.</p> <p>Details of de-brief to be emailed to: opsplanning@warwickshireandwestmercia.pnn.police.uk for the attention of Helen Faulkner.</p>
3.6	Finance
	Overtime must be coded to <u>Operation</u> ██████████ and submitted via the Mercury payroll system.
3.7	Welfare
	<p>If any officers become aware of any immediate risks to Welfare they are to make colleagues aware and ensure that line managers are made aware and consider the submission of an accident / near miss form.</p> <p>Access to toilets is available via facilities at Shrewsbury Police Station and Redwood House.</p>

	If operational commitments allow, the PSU Commander will rotate resources to allow a comfort break at either Shrewsbury Police Station or Redwood House.
3.8	Catering
	All officers will be provided with a packed meal and drink. Any officers with any specific dietary requirements are asked to contact Helen Faulkner as soon as possible. Serial sergeants to allocate a member of staff to collect food for their serial please. This will be available following the briefing in the old canteen, adjacent to the conference room.
3.9	Significant Locations (Include postcodes, RVPs, etc)
	See Tactical Packs
3.10	Complaints against police
	Complaints will be recorded and dealt with in accordance with existing Alliance procedures.
4 - COMMUNICATION	
4.1	Talk Group Allocation
	• [REDACTED]
4.2	Operational Requirements
	Use your own domestic talk group to book on duty <ul style="list-style-type: none"> ➤ Remain on your allocated talk group unless directed. ➤ Do not link back to your own local policing area talk group. ➤ Do not have your handheld terminal on scan.
4.3	Social Media
	Officers are reminded of the fact that they should not use social media whilst deployed during the operation. They must also be aware of what they place on social media after the event. A basic principle is that all officers, staff and volunteers are accountable for whatever they put into the public domain even in a privately held account and must not behave in a way which is likely to bring discredit upon the police service or their force (Force Social Media Guidelines). Further information can be obtained by reading the ACPO Guidance on the Safe Use of the Internet and Social Media.

5 – Human Rights (If not documented in strategic document, in which case delete this table)
The implications of the Human Rights Act, 1998, have been considered throughout the preparation of this Order. Proportionality has been identified as paramount to Human Rights compliance. This requires

officers to maintain a fair balance between the rights of the individual and the rest of the community. There must be a reasonable relationship between the aim to be achieved and the means used.	
Proportionality:	Throughout this operation all personnel will behave in a manner that is not arbitrary or unfair. They will limit their actions strictly to achieve their objective and maintain a balance that protects the rights of individuals and the community as a whole.
Legality:	All officers and staff will be required to act within the law. Each person will be accountable in law for his or her actions. Officers must have knowledge of the legislation they intend to use.
Accountability:	Action must be legitimate and respect the rights of individuals as contained with Articles 2 to 12 of the Human Rights Act, 1998.
Necessity:	Every action taken must be necessary and undertaken in a way that is least intrusive and has less impact on the individual or group of people concerned or affected by that action. Any action must be conducted without discrimination and be justifiable in a democratic society.

European Convention of Human Rights (ECHR) Articles

Article 2 – Right to Life

The police operation has been established as far as possible to ensure there are sufficient resources available to both act as a deterrent and respond to incidents of public disorder. Our plans aim to minimise where possible the potential for violence thereby reducing the impact on Article 2.

Article 3 – Prohibition of Inhumane and Degrading Treatment

This operation recognises that there is the distinct possibility that officers will be required to use force in order to mitigate the threat of disorder or violence. Under the HMIC Principles governing police use of force officers are made aware of their individual accountability and the need to justify their actions. Officers receive training in appropriate personal safety techniques and methods to deal with violent members of the public.

Article 5 – Right to Liberty and Security

The policing operation does not seek to impact on the liberty and security of those attending the event unless it is in the legitimate pursuit of the core principles of policing and specifically targeted against those persons engaged in illegal or criminal acts.

Article 8 – Right to privacy

There is likely to be some disruption to those members of the public not engaged in football activities. Where possible the impact of the policing operation on these persons will be restricted to the minimum recourse to action in order to deal with any incident or mitigate any threat. The nature of the operation does not seek to directly and unnecessarily impact on members of the public not associated with football activity.

Article 9 – Freedom of Thought, Conscience & Religion

The Strategic Intention does not automatically interfere with the rights of the individual under this article. Any interference will meet the requisite criteria identified in the article.

Article 10 – Freedom of Expression

The Strategic Intention does not automatically interfere with the rights of the individual under this article. Any interference will meet the requisite criteria identified in the article.

Article 11 – Freedom of Assembly & Association

The Strategic Intention does not automatically interfere with the rights of the individual under this article. Any interference will meet the requisite criteria identified in the article.

In the first instance the officers engaged on this operation will act on the presumption of peaceful assembly. However the operation also accounts for the likely possibility of disorder occurring between individuals from both sets of supporters. Where police action is required it will only be as necessary and against those responsible.

Save in the pursuit of a legitimate aim (Public Safety, Prevention of disorder or crime and the Protection of

the rights of others) the police must not prevent, hinder or restrict the assembly of persons. There is no intelligence to support an intervention in pursuit of any of these aims.

There is no intelligence to suggest that the police are required to implement an operation in order to facilitate the assembly of persons due to the potential for disruption or disorder from others.

Article 14 – Freedom from Discrimination

The operation provides police resources to deal with reported incidents, reduce opportunity for discrimination and enhances prosecution opportunities in respect of any transgressions due to the diverse social make up of persons who may be affected by this operation. The nature of the operation is not discriminatory and seeks to promote a successful community event. Where possible resources will seek to deter such incidents or be in a position to provide a professional investigation into the circumstances.