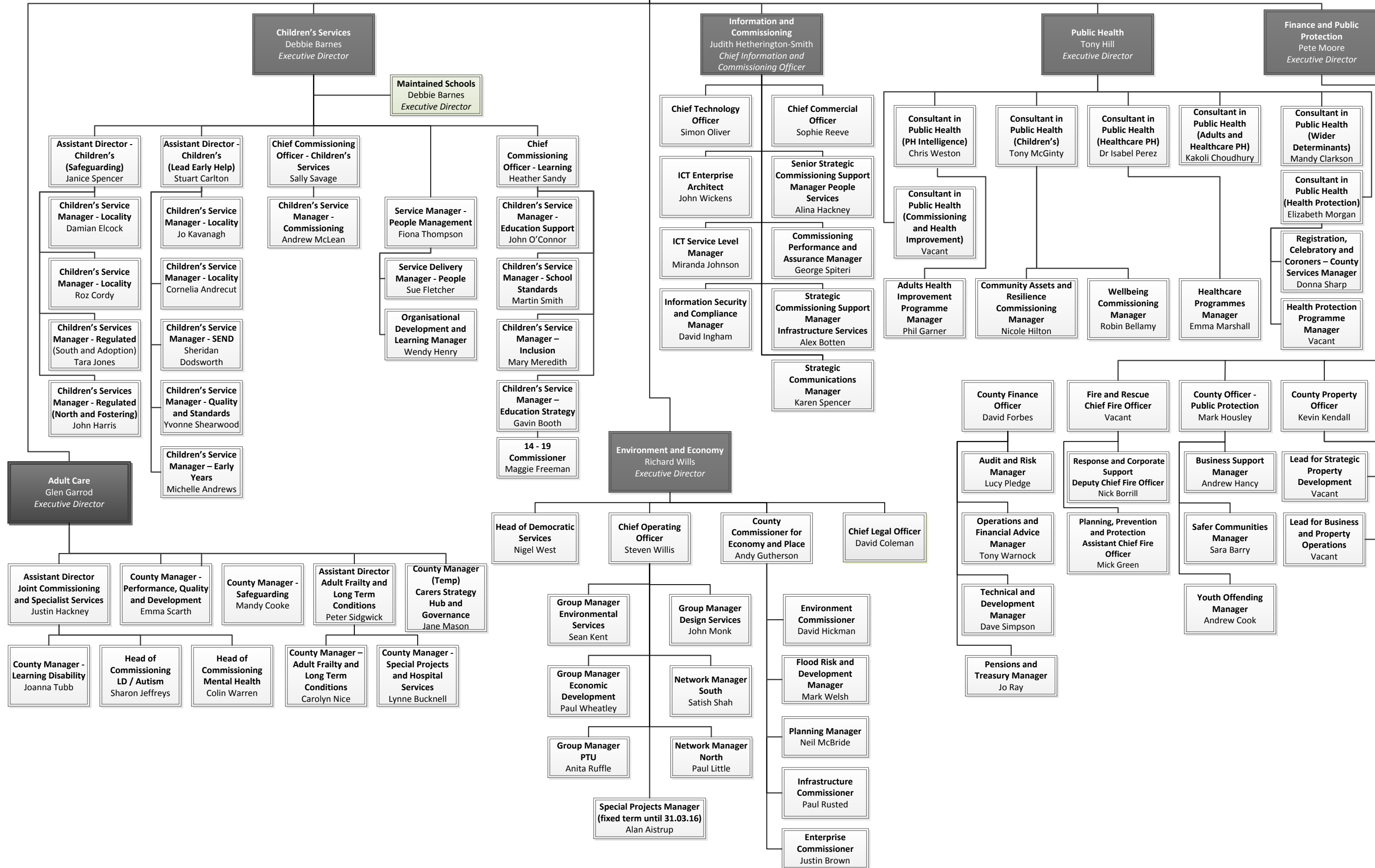


Lincolnshire County Council Organisation Chart

April 2016

Lincolnshire County Council
Tony McArdle
Chief Executive



Version Change Control

- v1.0: October issue
- v1.1: amended drawing of Adult Services (Lucy Robertson)
- v1.2: added (Interim) to Lynne Bucknell (Lucy Robertson)
- v1.3: added Highways East and TSP (Alison Christie)
changes to Children's Services ADs and LIT structure (Stewart Whitworth)

- v2.0 November issue