

Welcome to this Special Area Forum Conference

Cllr. Steve Foulkes,
Leader of Wirral Council

Introducing the Strategic Asset Review

Steve Maddox,
Chief Executive of Wirral Council

Poor quality buildings

3



- All local Councils are under constant pressure to make up the difference between income and increasing costs.
- In 2009/10, Wirral Council predicts a substantial shortfall.
- The Strategic Asset Review will save £3.7 million in running costs every year and save £12.4 million in maintenance over 10 years.

High quality facilities

5



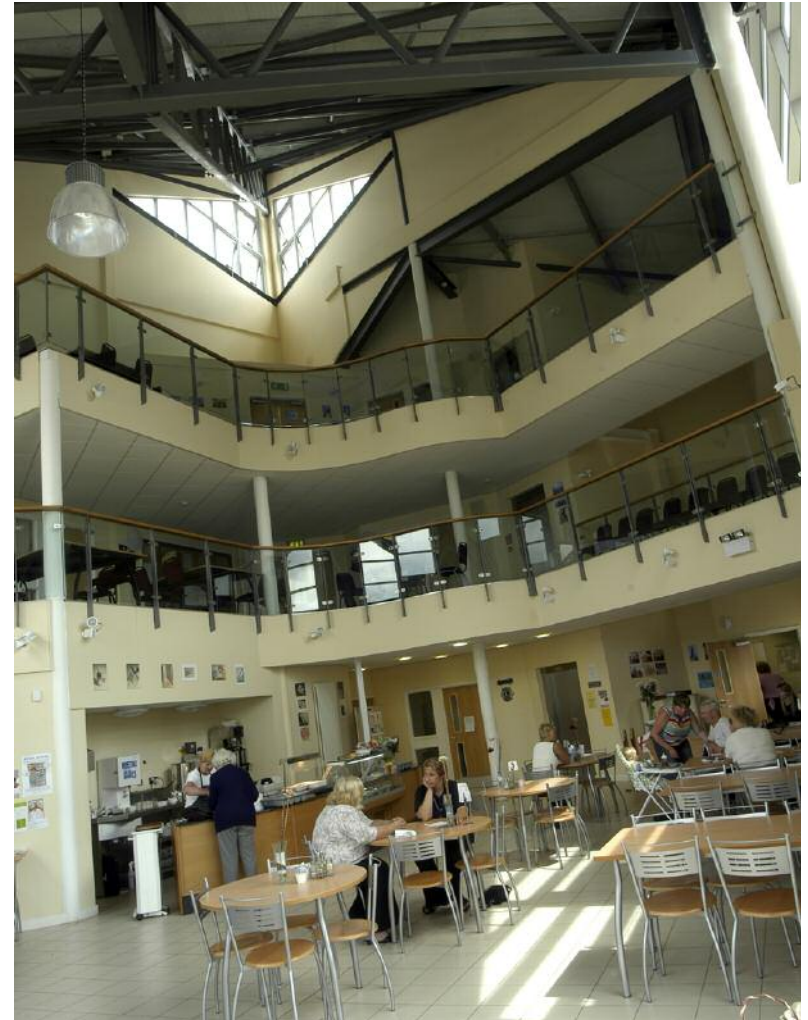
High quality facilities

6



In the community

7



The implications of the Strategic Asset Review for Culture and Leisure

Alan Stennard,
Director of Regeneration

Culture and leisure

9



Recommendations from the review of Cultural Services included:

- re-provision
- improved access
- partnerships
- community involvement
- improved quality
- alternative delivery options

Multi-purpose complexes

11



- Advice and information on Council services.
- Shared space for use by Council, community and voluntary sector partners.
- Library facilities, including free IT/internet access.
- Facilities and space to support the delivery of a range of public services.

Five main hubs:

- Bebington Civic Centre
- Birkenhead (Europa Pools)
- Liscard (a brand new facility)
- Moreton (a brand new facility)
- West Kirby Concourse (re-modelled)

Seven smaller, community focused, multi-purpose complexes:

- Eastham
- Greasby
- Heswall
- Leasowe (probably in the Millennium Centre)
- Rock Ferry
- St. James
- Woodchurch



Sport & Leisure

16





Working in partnership

18



Delivering services

19



Projects elsewhere

20



Projects elsewhere



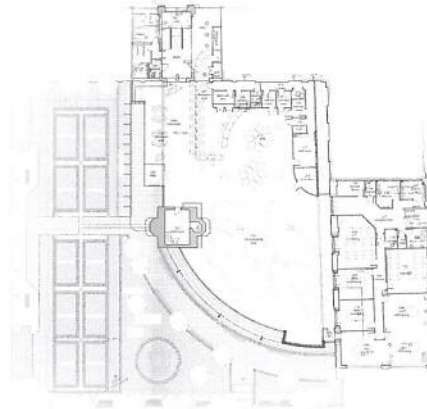
View from Public Square



View of Main Entrance



Aerial View from South West



Section through Local Service Centre

Design Aspirations

The existing Stoke Heritage trail and its route clearly defined and enhanced

Clock Tower to be integral as a focal point being connected to the new building

Need for a public building and space to provide a stopping point on the heritage trail

New public square

A flexible 'future proof' building ensuring its sustainability

Careful integration with the existing historic context

An energy efficient and sustainable solution providing a landmark building

The building form and external spaces will inform the building users and help to navigate them defining entrance, building use and will provide a sense of place



Views and comments

Chaired by Cllr. Steve Foulkes,
Leader of Wirral Council