

Date: 20th January 2010
Your Ref:
Our Ref: INS/DA

Mr D. Bracegirdle

**Highways and Engineering
Delivery**
Inspections and Claims
Management
Ellesmere House, Ellesmere St,
Bolton, BL3 5DT
Tel: 01204 336661
Fax: 01204 336698
Minicom: N/A
www.bolton.gov.uk

Dear Mr Bracegirdle,

RE: FOI request for Chorley New Rd, Bolton

I have enclosed all documents relating to highway maintenance for Chorley New Road in Bolton from the 1st January 2008 up to the present day.
You have not specified what section of Chorley New Rd you are particular interested in as it travels along three districts, Bolton central, Lostock and Horwich.
I have therefore enclosed records for the full length of Chorley New Rd.
Unfortunately the records come in 2 different formats as our computer data system changed around October 2008.
The majority of the repairs I have provided are carried out by our Area Maintenance Teams and have been identified via routine safety inspections or complaints generated by the public.
These are deemed to be urgent repairs.
The more extensive resurfacing works have been identified on the street works records which have also been attached.
I am unable to establish how long each and every repair took as it is not recorded.

Yours sincerely



Your Name : David Aldred
Your Title : Assistant Manager – Highway
Claims/Inspectorate
Direct Line: 01204 336661
Direct Fax: 01204 336698

Director of Environmental Services **Malcolm Cox**



Details of Defects Recorded Via Routine
Safety Inspections AND COMPLAINTS

Repairs Street Name : 'CHORLEY NEW RD', From : '04-OCT-2008', To : '18-JAN-2010'

EAM WO No.	Priority Description	Location	Activity Description	Repair date	Public / Inspection
WO5495	NULL	OPPOSITE OAKLEY PARK SEE PLAN	MINOR WORKS HIGHWAYS - FOOTWAY	NULL	Inspection
WO6959	NULL	OPPOSITE OAKLEY PARK SEE PLAN	MINOR WORKS HIGHWAYS - FOOTWAY	NULL	Inspection
WO7020	No Responsibility	JCT CHORLEY OLD ROAD	UNIDENTIFIED	31-Oct-2008	Inspection
WO7023	B-5 days	O/S 3	C/W - BITMAC DEFECT UP TO 0.5M2	18-Dec-2008	Inspection
WO7024	No Responsibility	NR JCT THORN LEA CLOSE	UU DRAINAGE	31-Oct-2008	Inspection
WO7027	B-5 days	OPP L/C 51	C/W - BITMAC DEFECT UP TO 0.5M2	13-Nov-2008	Inspection
WO7028	B-5 days	NR L/C 79	C/W - BITMAC DEFECT UP TO 0.5M2	11-Nov-2008	Inspection
WO7030	B-5 days	OPP 430	C/W - BITMAC DEFECT UP TO 0.5M2	13-Nov-2008	Inspection
WO7033	B-5 days	JCT VICTORIA ROAD	C/W - BITMAC DEFECT UP TO 0.5M2	07-Nov-2008	Inspection

WO7034	B-5 days	OPP L/C 87	C/W - BITMAC DEFECT UP TO 0.5M2	11-Nov-2008	Inspection
WO11714	B-5 days	opp l/c 87	C/W - BITMAC DEFECT UP TO 0.5M2	28-Nov-2008	Inspection
WO10162	B-5 days	o/s 36	F/W - BITMAC DEFECT 1.5M2 UP TO 2M2	08-Dec-2008	Inspection
WO10163	B-5 days	opp l/c 35	F/W - BITMAC DEFECT 0.5M2 UP TO 1M2	28-Nov-2008	Inspection
WO10164	No Responsibility	opp jun ravenswood dr	UU DRAINAGE	26-Nov-2008	Inspection
WO10165	No Responsibility	20m from ravens wood	UU DRAINAGE	26-Nov-2008	Inspection
WO10167	B-5 days	jun the lane	C/W - BITMAC DEFECT 1M2 UP TO 1.5M2	28-Nov-2008	Inspection
WO10168	No Responsibility	opp 470	DRAINAGE	26-Nov-2008	Inspection
WO10170	B-5 days	near l/c 89	DRAINAGE	26-Nov-2008	Inspection
WO10171	B-5 days	near l/c 89	C/W - BITMAC DEFECT UP TO 0.5M2	10-Dec-2008	Inspection
WO10172	B-5 days	opp l/c 92, s/o gully	C/W - BITMAC DEFECT 0.5M2 UP TO 1M2	28-Nov-2008	Inspection
WO10173	B-5 days	opp l/c 87	C/W - BITMAC DEFECT UP TO 0.5M2	28-Nov-2008	Inspection
WO10174	B-5 days	opp l/c 71	C/W - BITMAC DEFECT 2M2 UP TO 2.5M2	28-Nov-2008	Inspection
WO20891	B-5 days	jun chorley st	C/W - BITMAC DEFECT UP TO 0.5M2	16-Jan-2009	Inspection

WO20892	No Responsibility	jun chorley old rd	ST LIGHTING	09-Jan-2009	Inspection
WO20893	B-5 days	near l/c 37	C/W - BITMAC DEFECT 0.5M2 UP TO 1M2	16-Jan-2009	Inspection
WO20894	B-5 days	near l/c 37	F/W - BITMAC DEFECT 3.5M2 UP TO 4M2	15-Jan-2009	Inspection
WO20895	B-5 days	near l/c 87, jun the lane	C/W - BITMAC DEFECT UP TO 0.5M2	15-Jan-2009	Inspection
WO20896	B-5 days	o/s 545	F/W - BITMAC DEFECT UP TO 0.5M2	15-Jan-2009	Inspection
WO20897	B-5 days	btwn l/c 90 - 92	C/W - BITMAC DEFECT 1.5M2 UP TO 2M2	16-Jan-2009	Inspection
WO20898	B-5 days	jun victoria rd	C/W - BITMAC DEFECT 1M2 UP TO 1.5M2	16-Jan-2009	Inspection
WO20899	B-5 days	o/s 470	C/W - BITMAC DEFECT 1M2 UP TO 1.5M2	16-Jan-2009	Inspection
WO27412	B-5 days	o/s 277	C/W - BITMAC DEFECT 0.5M2 UP TO 1M2	NULL	Inspection
WO27413	B-5 days	o/s 271	C/W - BITMAC DEFECT UP TO 0.5M2	20-Feb-2009	Inspection
WO27414	B-5 days	jun chorley old rd	C/W - BITMAC DEFECT 0.5M2 UP TO 1M2	27-Feb-2009	Inspection
WO27415	B-5 days	jun mornington rd	C/W - BITMAC DEFECT 0.5M2 UP TO 1M2	24-Feb-2009	Inspection

WO27416	B-5 days	opp l/c 37	C/W - BITMAC DEFECT UP TO 0.5M2	27-Feb-2009	Inspection
WO27417	B-5 days	o/s 184	C/W - BITMAC DEFECT 0.5M2 UP TO 1M2	27-Feb-2009	Inspection
WO27419	B-5 days	jun devonshire rd	F/W - 2LM - KERB RELAY	03-Apr-2009	Inspection
WO27420	B-5 days	btwn l/c 90 - 92	C/W - BITMAC DEFECT 0.5M2 UP TO 1M2	27-Feb-2009	Inspection
WO27421	B-5 days	jun victoria rd	C/W - BITMAC DEFECT UP TO 0.5M2	27-Feb-2009	Inspection
WO27422	B-5 days	o/s 470	C/W - BITMAC DEFECT 0.5M2 UP TO 1M2	13-Mar-2009	Inspection
WO31466	C-10 days	CHORLEY NEW RD JUNC TUDOR AVE ROUND GULLY	C/W - BITMAC DEFECT UP TO 0.5M2	11-Feb-2009	Inspection
WO33319	B-5 days	o/s 45	C/W - BITMAC DEFECT 0.5M2 UP TO 1M2	27-Feb-2009	Inspection
WO33320	B-5 days	jun chorley old rd	C/W - BITMAC DEFECT UP TO 0.5M2	06-Mar-2009	Inspection
WO33321	B-5 days	o/s 42	F/W - POINTING	26-Feb-2009	Inspection
WO33322	B-5 days	o/s 277	C/W - BITMAC DEFECT 0.5M2 UP TO 1M2	27-Feb-2009	Inspection
WO33323	B-5 days	o/s 275	F/W - BITMAC DEFECT UP TO 0.5M2	27-Feb-2009	Inspection

WO33325	B-5 days	o/s 271	C/W - BITMAC DEFECT UP TO 0.5M2	06-Mar-2009	Inspection
WO33327	B-5 days	near l/c 37	C/W - BITMAC DEFECT UP TO 0.5M2	06-Mar-2009	Inspection
WO33329	B-5 days	o/s 184	C/W - BITMAC DEFECT 0.5M2 UP TO 1M2	27-Feb-2009	Inspection
WO33330	B-5 days	jun devonshire rd	F/W - 1LM - KERB RELAY	26-Feb-2009	Inspection
WO33332	No Responsibility	opp 470	DRAINAGE	17-Feb-2009	Inspection
WO33334	B-5 days	btwn l/c 92 - l/c 90	C/W - BITMAC DEFECT 1.5M2 UP TO 2M2	06-Mar-2009	Inspection
WO33336	B-5 days	jun victoria rd	C/W - BITMAC DEFECT UP TO 0.5M2	06-Mar-2009	Inspection
WO33338	B-5 days	o/s 470	C/W - BITMAC DEFECT 0.5M2 UP TO 1M2	13-Mar-2009	Inspection
WO33340	B-5 days	o/s 458	F/W - BITMAC DEFECT 1.5M2 UP TO 2M2	24-Feb-2009	Inspection
WO33341	B-5 days	o/s 456	C/W - BITMAC DEFECT 0.5M2 UP TO 1M2	27-Feb-2009	Inspection
WO33344	B-5 days	opp l/c 51	C/W - BITMAC DEFECT UP TO 0.5M2	06-Mar-2009	Inspection
WO33345	B-5 days	jun ladybridge lane	C/W - BITMAC DEFECT 1.5M2 UP TO 2M2	27-Feb-2009	Inspection
WO41925	B-5 days	o/s 1	C/W - BITMAC DEFECT 1.5M2 UP TO 2M2	24-Apr-2009	Inspection
WO41927	B-5 days	o/s 36	F/W - POINTING	17-Mar-2009	Inspection

WO41928	B-5 days	jun westwood rd	CW - BITMAC DEFECT UP TO 0.5M2	01-Apr-2009	Inspection
WO41929	B-5 days	o/s 277	CW - BITMAC DEFECT UP TO 0.5M2	01-Apr-2009	Inspection
WO41930	B-5 days	o/s 275	FAW - BITMAC DEFECT UP TO 0.5M2	01-Apr-2009	Inspection
WO41931	No Responsibility	opp num 470	DRAINAGE	17-Mar-2009	Inspection
WO41932	B-5 days	opp 470	CW - BITMAC DEFECT UP TO 0.5M2	01-Apr-2009	Inspection
WO41934	B-5 days	btwn l/c 90 - 92	CW - BITMAC DEFECT 2.5M2 UP TO 3M2	24-Apr-2009	Inspection
WO41937	B-5 days	o/s 470	CW - BITMAC DEFECT 0.5M2 UP TO 1M2	24-Apr-2009	Inspection
WO41938	No Responsibility	jun thornleigh close	UU DRAINAGE	17-Mar-2009	Inspection
WO53667	B-5 days	jun westwood rd	CW - BITMAC DEFECT UP TO 0.5M2	23-Apr-2009	Inspection
WO53668	B-5 days	jun park rd	CW - BITMAC DEFECT 0.5M2 UP TO 1M2	23-Apr-2009	Inspection
WO53669	B-5 days	jun chorley old rd	CW - BITMAC DEFECT 0.5M2 UP TO 1M2	23-Apr-2009	Inspection
WO53670	B-5 days	o/s 277	CW - BITMAC DEFECT UP TO 0.5M2	01-May-2009	Inspection
WO53671	B-5 days	opp l/c 37	CW - BITMAC DEFECT UP TO 0.5M2	01-May-2009	Inspection

WO53672	No Responsibility	Jun thorn lea close	UU DRAINAGE	16-Apr-2009	Inspection
WO53673	B-5 days	near l/c 87	C/W - BITMAC DEFECT UP TO 0.5M2	23-Apr-2009	Inspection
WO53674	B-5 days	btwn l/c 87 - l/c 88	C/W - BITMAC DEFECT 1.5M2 UP TO 2M2	01-May-2009	Inspection
WO53675	B-5 days	near l/c 91	C/W - BITMAC DEFECT UP TO 0.5M2	01-May-2009	Inspection
WO53676	B-5 days	btwn l/c 90 - 92	C/W - BITMAC DEFECT 2.5M2 UP TO 3M2	01-May-2009	Inspection
WO53677	B-5 days	o/s 470	C/W - BITMAC DEFECT 1.5M2 UP TO 2M2	01-May-2009	Inspection
WO53680	B-5 days	o/s 549	FW - BITMAC DEFECT 0.5M2 UP TO 1M2	23-Apr-2009	Inspection
WO54777	Major works	FROM PEMBROKE STREET TO 41 CHORLEY NEW ROAD	MAJOR WORKS HIGHWAYS - FOOTWAY	NULL	Inspection
WO54780	Major works	FROM BEDFORD STREET TO PARK ROAD	MAJOR WORKS HIGHWAYS - FOOTWAY	27-Apr-2009	Inspection

WO54781	Major works	FROM 43 CHORLEY NEW ROAD TO 59 CHORLEY NEW ROAD	MAJOR WORKS HIGHWAYS - FOOTWAY	28-Apr-2009	Inspection
WO58580	B-5 days	o/s 3	C/W - BITMAC DEFECT 1.5M2 UP TO 2M2	19-Jun-2009	Inspection
WO58602	B-5 days	near l/c 1	C/W - BITMAC DEFECT UP TO 0.5M2	19-Jun-2009	Inspection
WO58604	B-5 days	JUN PARK RD	C/W - BITMAC DEFECT 0.5M2 UP TO 1M2	09-Jun-2009	Inspection
WO58610	B-5 days	jun fifth ave	C/W - BITMAC DEFECT UP TO 0.5M2	09-Jun-2009	Inspection
WO58611	B-5 days	o/s 277	C/W - BITMAC DEFECT 0.5M2 UP TO 1M2	09-Jun-2009	Inspection
WO58613	B-5 days	near jun the lane	C/W - BITMAC DEFECT 1.5M2 UP TO 2M2	12-Jun-2009	Inspection
WO58615	B-5 days	near l/c 88	C/W - BITMAC DEFECT UP TO 0.5M2	NULL	Inspection
WO58616	B-5 days	opp l/c 87	C/W - BITMAC DEFECT UP TO 0.5M2	NULL	Inspection
WO62495	B-5 days	ADJ L/C 88 FW	FW - BITMAC DEFECT UP TO 0.5M2	09-Jun-2009	Inspection
WO62839	B-5 days	NEAR JUN THE LANE	C/W - BITMAC DEFECT 1.5M2 UP TO 2M2	12-Jun-2009	Inspection

WO57733 WO75097	Major works C-10 days	NULL 5 M FROM THORNLEA CLOSE B 0.2	NULL FW - POINTING	NULL 11-Jun-2009	Inspection Inspection
WO75098	C-10 days	380 B 0.2	FW - BITMAC DEFECT UP TO 0.5M2	11-Jun-2009	Inspection
WO75099	C-10 days	JUN MARKLAND HILL B 0.2	CW - BITMAC DEFECT UP TO 0.5M2	11-Jun-2009	Inspection
WO75100	C-10 days	ADJ 442 B 0.2	CW - BITMAC DEFECT UP TO 0.5M2	11-Jun-2009	Inspection
WO75101	C-10 days	ADJ L/C 88 B 0.1	CW - BITMAC DEFECT UP TO 0.5M2	11-Jun-2009	Inspection
WO75102	C-10 days	ADJ VICTORIA RD B 1.0	CW - BITMAC DEFECT 0.5M2 UP TO 1M2	NULL	Inspection
WO75095	C-10 days	OPP L/C 46 B 0.6	FW - BITMAC DEFECT 0.5M2 UP TO 1M2	NULL	Inspection
WO75096	C-10 days	ADJ L/C 60 B 0.3	FW - BITMAC DEFECT UP TO 0.5M2	11-Jun-2009	Inspection
WO76230	C-10 days	JUN LOSTOCK LANE	FW - BITMAC DEFECT 3.5M2 UP TO 4M2	11-Jun-2009	Inspection
WO76229	C-10 days	JUN LOSTOCK LANE	CW - BITMAC DEFECT 0.5M2 UP TO 1M2	11-Jun-2009	Inspection

WO76231	C-10 days	20M FROM JUN LOSTOCK LANE	F/W - BITMAC DEFECT 3.5M2 UP TO 4M2	11-Jun-2009	Inspection
WO73209	C-10 days	PEMBROKE ST B 0.2	F/W - POINTING	11-Jun-2009	Inspection
WO73220	C-10 days	JUN PARK HILL ST (B 0.4)	C/W - BITMAC DEFECT UP TO 0.5M2	11-Jun-2009	Inspection
WO78585	C-10 days	O/S 547	F/W - BITMAC DEFECT UP TO 0.5M2	11-Jun-2009	Inspection
WO73223	C-10 days	O/S 36 (B 0.1)	F/W - POINTING	11-Jun-2009	Inspection
WO73226	C-10 days	JUNC WESTWOOD RD (B O.3)	C/W - BITMAC DEFECT UP TO 0.5M2	11-Jun-2009	Inspection
WO78587	C-10 days	OPP L/C 92	F/W - BITMAC DEFECT UP TO 0.5M2	11-Jun-2009	Inspection
WO73227	C-10 days	JUN BEVERLY RD (B 0.2)	C/W - BITMAC DEFECT UP TO 0.5M2	11-Jun-2009	Inspection
WO73250	C-10 days	JUN SHREWSBURY RD (B 0.1)	F/W - POINTING	11-Jun-2009	Inspection
WO73251	C-10 days	JUN SHREWSBURY RD (B 0.2)	C/W - BITMAC DEFECT UP TO 0.5M2	11-Jun-2009	Inspection

WO73252	C-10 days	JUN DEVONSHIRE RD (B 0.3)	C/W - BITMAC DEFECT UP TO 0.5M2	11-Jun-2009	Inspection
WO73253	C-10 days	JUN ALBERT RD (B 0.6)	C/W - BITMAC DEFECT 0.5M2 UP TO 1M2	11-Jun-2009	Inspection
WO73254	C-10 days	10M ADJ L/C 46	F/W - BITMAC DEFECT UP TO 0.5M2	11-Jun-2009	Inspection
WO73255	C-10 days	JUN NEWHALL LANE (B 0.3)	C/W - BITMAC DEFECT UP TO 0.5M2	11-Jun-2009	Inspection
WO73256	C-10 days	10 M FROM JUN NEWHALL LANE (B 0.0.5)	F/W - BITMAC DEFECT UP TO 0.5M2	11-Jun-2009	Inspection
WO62770	Major works	43 TO 59 CHORLEY NEW RD BOLTON	MAJOR WORKS HIGHWAYS - FOOTWAY	NULL	Inspection
WO66913	B-5 days	NR L/C 1	C/W - BITMAC DEFECT UP TO 0.5M2	27-Jul-2009	Inspection
WO66914	No Responsibility	OPP LION OF VIENNA PH	BRITISH TELECOM	13-Jul-2009	Inspection
WO66915	No Responsibility	JCT THORN LEA CLOSE	JU DRAINAGE	13-Jul-2009	Inspection

WO75296	B-5 days	AT JNC WITH ALBERT RD.	C/W - BITMAC DEFECT UP TO 0.5M2	21-Sep-2009	Inspection
WO75297	B-5 days	O/S NUMBER 285.	F/W - BITMAC DEFECT 0.5M2 UP TO 1M2	21-Sep-2009	Inspection
WO75298	B-5 days	AT JNC WITH PARK HILL ST.	C/W - BITMAC DEFECT UP TO 0.5M2	21-Sep-2009	Inspection
WO75299	B-5 days	O/S NUMBER 36, POINT UP ROUND MANHOLE ON F/W.	F/W - POINTING	12-Oct-2009	Inspection
WO81446	No Responsibility	O/S NUMBER 1, MANHOLE ROCKING IN C/W	UU DRAINAGE	02-Oct-2009	Inspection
WO81447	B-5 days	AT JNC WITH NEW HALL LANE	C/W - BITMAC DEFECT UP TO 0.5M2	19-Oct-2009	Inspection
WO81448	B-5 days	AT JNC WITH THE EXIT OVERDALE DRIVE	F/W - 1LM - KERB RELAY	NULL	Inspection
WO81449	B-5 days	OPP NUMBER 350	F/W - BITMAC DEFECT UP TO 0.5M2	19-Oct-2009	Inspection

WO81450	B-5 days	NEAR L/C NUMBER 14	FW - BITMAC DEFECT 0.5M2 UP TO 1M2	19-Oct-2009	Inspection
WO81451	No Responsibility	JNC WITH THORNLEIGH CLOSE. MANHOLE ROCKING IN CW.	UU DRAINAGE	02-Oct-2009	Inspection
WO81452	B-5 days	AT JNC WITH MARKLAND HILL.	FW - 1LM - KERB RELAY	NULL	Inspection
WO81453	B-5 days	NEAR L/C NUMBER 69	FW - BITMAC DEFECT UP TO 0.5M2	19-Oct-2009	Inspection
WO87571	B-5 days	O/S NUMBER 36, FLAG MISSING. FILL WITH BITMAC.	FW - BITMAC DEFECT UP TO 0.5M2	16-Nov-2009	Inspection
WO87572	B-5 days	O/S NUMBER 182	FW - BITMAC DEFECT UP TO 0.5M2	16-Nov-2009	Inspection
WO87573	B-5 days	AT JNC WITH DEVONSHIRE RD.	CW - BITMAC DEFECT UP TO 0.5M2	NULL	Inspection
WO87574	B-5 days	NEAR ENTRANCE TO EXIT OVERDALE.	FW - BITMAC DEFECT 0.5M2 UP TO 1M2	NULL	Inspection

WO87575	B-5 days	OPP NUMBER 470.	C/W - BITMAC DEFECT UP TO 0.5M2	03-Nov-2009	Inspection
WO96174	B-5 days	NEAR ENTRANCE TO OVERDALE DR.	C/W - BITMAC DEFECT 0.5M2 UP TO 1M2	NULL	Inspection
WO96175	No Responsibility	AT THE JNC WITH THORNELEIGH CLOSE. MANHOLE ROCKING IN C/W.	UU DRAINAGE	03-Dec-2009	Inspection
WO96176	B-5 days	O/S NUMBER 36.	F/W - 3M2 - FLAG RELAY	NULL	Inspection
WO96177	B-5 days	OPP NUMBER 96	F/W - BITMAC DEFECT 0.5M2 UP TO 1M2	NULL	Inspection
WO96178	B-5 days	OPP NUMBER 470. SIDE OF GULLY.	C/W - BITMAC DEFECT UP TO 0.5M2	NULL	Inspection
WO96179	B-5 days	OPP NUMBER 470. GULLY LOW IN C/W.	DRAINAGE	03-Dec-2009	Inspection

WO96180	B-5 days	OPP NUMBER 470. MANHOLE LOW IN C/W.	BRITISH TELECOM	03-Dec-2009	Inspection
WO96181	B-5 days	OPP L/C NUMBER 92. SIDE OF GULLY.	C/W - BITMAC DEFECT UP TO 0.5M2	NULL	Inspection
WO96183	B-5 days	O/S NUMBER 470, THREE POTHOLES IN C/W.	C/W - BITMAC DEFECT 0.5M2 UP TO 1M2	NULL	Inspection
WO96184	B-5 days	O/S NUMBER 549.	F/W - BITMAC DEFECT UP TO 0.5M2	NULL	Inspection
WO96185	B-5 days	NEAR ENTRANCE TO LADT BRIDGE HALL.	F/W - BITMAC DEFECT 4.5M2 UP TO 5M2	NULL	Inspection
WO96186	B-5 days	BETWEEN L/C NUMBER 67 - 69.	F/W - BITMAC DEFECT 4.5M2 UP TO 5M2	NULL	Inspection
WO104345	B-5 days	J/O PARK ROAD	C/W - BITMAC DEFECT UP TO 0.5M2	NULL	Inspection
WO104346	B-5 days	NR L/C 27	C/W - BITMAC DEFECT UP TO 0.5M2	NULL	Inspection
WO104347	B-5 days	NR L/C 92	DRAINAGE	14-Jan-2010	Inspection

WO104348	B-5 days	NR L/C 92	C/W - BITMAC DEFECT UP TO 0.5M2	NULL	Inspection
WO104349	B-5 days	OPP J/O BEAUMONT ROAD	C/W - BITMAC DEFECT 4M2 UP TO 4.5M2	NULL	Inspection
WO104350	B-5 days	J/O VICTORIA ROAD	C/W - BITMAC DEFECT 0.5M2 UP TO 1M2	NULL	Inspection
WO104351	B-5 days	O/S 470	C/W - BITMAC DEFECT UP TO 0.5M2	NULL	Inspection
WO104352	B-5 days	OPP L/C 93	C/W - BITMAC DEFECT UP TO 0.5M2	NULL	Inspection
WO36794	NULL	O/S 277 to O/S 279 Chorley New Road, Bolton	MINOR WORKS HIGHWAYS - CARRIAGEWAY	NULL	Inspection
WO13102	NULL	JCT WITH CROWN LANE	C/W - BITMAC DEFECT 1M2 UP TO 1.5M2	10-Dec-2008	Public
WO14772	B-5 days	OPP 420 CHORLEY NEW RD / S/O MANHOLE	C/W - BITMAC DEFECT UP TO 0.5M2	19-Dec-2008	Public
WO15762	B-5 days	JCT FIFTH AVE/CHORLEY NEW RD	C/W - BITMAC DEFECT 1M2 UP TO 1.5M2	15-Jan-2009	Public

WO21291	B-5 days	CHORLEY OLD RD JCT PARK ST	C/W - BITMAC DEFECT UP TO 0.5M2	15-Jan-2009	Public
WO26944	B-5 days	O/S 16	C/W - BITMAC DEFECT 0.5M2 UP TO 1M2	26-Feb-2009	Public
WO30256	B-5 days	O/S 277 CHORLEY NEW RD, BOLTON	C/W - BITMAC DEFECT UP TO 0.5M2	27-Feb-2009	Public
WO30257	B-5 days	O/S 271 CHORLEY NEW RD, BOLTON	C/W - BITMAC DEFECT UP TO 0.5M2	27-Feb-2009	Public
WO41571	B-5 days	BTWN L/C 90 & 92	C/W - BITMAC DEFECT 1.5M2 UP TO 2M2	24-Apr-2009	Public
WO67311	C-10 days	BACK OF 92	C/W - BITMAC DEFECT 4.5M2 UP TO 5M2	12-Aug-2009	Public
WO88935	B-5 days	OPP 470 CHORLEY NEW RD / P/HOLE SIDE GULLY	C/W - BITMAC DEFECT UP TO 0.5M2	04-Dec-2009	Public
WO96149	B-5 days	O/S 36 CHORLEY NEW ROAD BOLTON	F/W - 3M2 - FLAG RELAY	NULL	Public
WO102946	C-10 days	O/S 276	C/W - BITMAC DEFECT UP TO 0.5M2	NULL	Public

Confirmation of when
 Routine Highway inspections
 were carried out

Highways Safety Inspections Street Name: 'CHORLEY NEW RD', From: '04-OCT-2008', To: '18-JAN-2010'

Date inspected	Inspection Number	Work Order Generated	Repair Date	Weather	Inspector	Frequency (days)		
30-Oct-08 12:00 AM	5133	WO7020	31-Oct-2008	Heavy Leaf Fall	Cottam, Mr. David	28		
30-Oct-08 12:00 AM		WO7024	31-Oct-2008		Cottam, Mr. David	28		
30-Oct-08 12:00 AM		WO7033	07-Nov-2008		Cottam, Mr. David	28		
30-Oct-08 12:00 AM		WO7028	11-Nov-2008		Cottam, Mr. David	28		
30-Oct-08 12:00 AM		WO7034	11-Nov-2008		Cottam, Mr. David	28		
30-Oct-08 12:00 AM		WO7027	13-Nov-2008		Cottam, Mr. David	28		
30-Oct-08 12:00 AM		WO7030	13-Nov-2008		Cottam, Mr. David	28		
30-Oct-08 12:00 AM		WO7023	18-Dec-2008		Cottam, Mr. David	28		
25-Nov-08 12:00 AM		7512	WO10164		26-Nov-2008	Dry Conditions	Cottam, Mr. David	28
25-Nov-08 12:00 AM			WO10165		26-Nov-2008		Cottam, Mr. David	28
25-Nov-08 12:00 AM	WO10168		26-Nov-2008	Cottam, Mr. David	28			
25-Nov-08 12:00 AM	WO10170		26-Nov-2008	Cottam, Mr. David	28			
25-Nov-08 12:00 AM	WO10163		28-Nov-2008	Cottam, Mr. David	28			
25-Nov-08 12:00 AM	WO10167		28-Nov-2008	Cottam, Mr. David	28			
25-Nov-08 12:00 AM	WO10172		28-Nov-2008	Cottam, Mr. David	28			
25-Nov-08 12:00 AM	WO10173		28-Nov-2008	Cottam, Mr. David	28			
25-Nov-08 12:00 AM	12520	WO10174	28-Nov-2008	Dry Conditions	Cottam, Mr. David	28		
25-Nov-08 12:00 AM		WO10162	08-Dec-2008		Cottam, Mr. David	28		
25-Nov-08 12:00 AM		WO10171	10-Dec-2008		Cottam, Mr. David	28		
08-Jan-09 12:00 AM		WO20892	09-Jan-2009		Cottam, Mr. David	28		
08-Jan-09 12:00 AM		WO20894	15-Jan-2009		Cottam, Mr. David	28		
08-Jan-09 12:00 AM		WO20895	15-Jan-2009		Cottam, Mr. David	28		
08-Jan-09 12:00 AM		WO20896	15-Jan-2009		Cottam, Mr. David	28		
08-Jan-09 12:00 AM		WO20891	16-Jan-2009		Cottam, Mr. David	28		
08-Jan-09 12:00 AM		WO20893	16-Jan-2009		Cottam, Mr. David	28		
08-Jan-09 12:00 AM		WO20897	16-Jan-2009		Cottam, Mr. David	28		
08-Jan-09 12:00 AM	18719	WO20898	16-Jan-2009	Dry Conditions	Cottam, Mr. David	28		
08-Jan-09 12:00 AM		WO20899	16-Jan-2009		Cottam, Mr. David	28		
28-Jan-09 12:00 AM		WO27413	20-Feb-2009		Cottam, Mr. David	28		
28-Jan-09 12:00 AM		WO27415	24-Feb-2009		Cottam, Mr. David	28		
28-Jan-09 12:00 AM		WO27414	27-Feb-2009		Cottam, Mr. David	28		
28-Jan-09 12:00 AM		WO27416	27-Feb-2009		Cottam, Mr. David	28		

28-Jan-09 12:00 AM	WO27417	27-Feb-2009	Cottam, Mr. David	28
28-Jan-09 12:00 AM	WO27420	27-Feb-2009	Cottam, Mr. David	28
28-Jan-09 12:00 AM	WO27421	27-Feb-2009	Cottam, Mr. David	28
28-Jan-09 12:00 AM	WO27422	13-Mar-2009	Cottam, Mr. David	28
28-Jan-09 12:00 AM	WO27419	03-Apr-2009	Cottam, Mr. David	28
28-Jan-09 12:00 AM	WO27412		Cottam, Mr. David	28
16-Feb-09 12:00 AM	WO33332	17-Feb-2009	Cottam, Mr. David	28
16-Feb-09 12:00 AM	WO33340	24-Feb-2009	Cottam, Mr. David	28
16-Feb-09 12:00 AM	WO33321	26-Feb-2009	Cottam, Mr. David	28
16-Feb-09 12:00 AM	WO33330	26-Feb-2009	Cottam, Mr. David	28
16-Feb-09 12:00 AM	WO33319	27-Feb-2009	Cottam, Mr. David	28
16-Feb-09 12:00 AM	WO33322	27-Feb-2009	Cottam, Mr. David	28
16-Feb-09 12:00 AM	WO33323	27-Feb-2009	Cottam, Mr. David	28
16-Feb-09 12:00 AM	WO33329	27-Feb-2009	Cottam, Mr. David	28
16-Feb-09 12:00 AM	WO33341	27-Feb-2009	Cottam, Mr. David	28
16-Feb-09 12:00 AM	WO33345	27-Feb-2009	Cottam, Mr. David	28
16-Feb-09 12:00 AM	WO33325	06-Mar-2009	Cottam, Mr. David	28
16-Feb-09 12:00 AM	WO33327	06-Mar-2009	Cottam, Mr. David	28
16-Feb-09 12:00 AM	WO33320	06-Mar-2009	Cottam, Mr. David	28
16-Feb-09 12:00 AM	WO33336	06-Mar-2009	Cottam, Mr. David	28
16-Feb-09 12:00 AM	WO33344	06-Mar-2009	Cottam, Mr. David	28
16-Feb-09 12:00 AM	WO33334	06-Mar-2009	Cottam, Mr. David	28
16-Feb-09 12:00 AM	WO33338	13-Mar-2009	Cottam, Mr. David	28
16-Mar-09 12:00 AM	WO41931	17-Mar-2009	Cottam, Mr. David	28
16-Mar-09 12:00 AM	WO41927	17-Mar-2009	Cottam, Mr. David	28
16-Mar-09 12:00 AM	WO41938	17-Mar-2009	Cottam, Mr. David	28
16-Mar-09 12:00 AM	WO41928	01-Apr-2009	Cottam, Mr. David	28
16-Mar-09 12:00 AM	WO41929	01-Apr-2009	Cottam, Mr. David	28
16-Mar-09 12:00 AM	WO41930	01-Apr-2009	Cottam, Mr. David	28
16-Mar-09 12:00 AM	WO41932	01-Apr-2009	Cottam, Mr. David	28
16-Mar-09 12:00 AM	WO41937	24-Apr-2009	Cottam, Mr. David	28
16-Mar-09 12:00 AM	WO41925	24-Apr-2009	Cottam, Mr. David	28
16-Mar-09 12:00 AM	WO41934	24-Apr-2009	Cottam, Mr. David	28
15-Apr-09 12:00 AM	WO53672	16-Apr-2009	Cottam, Mr. David	28
15-Apr-09 12:00 AM	WO53667	23-Apr-2009	Cottam, Mr. David	28
15-Apr-09 12:00 AM	WO53668	23-Apr-2009	Cottam, Mr. David	28

Dry Conditions

Dry Conditions

Dry Conditions

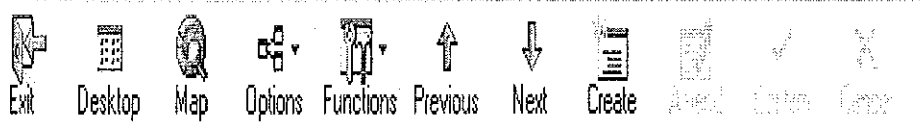
27888

36225

45904

15-Apr-09 12:00 AM		WO53669	23-Apr-2009	Cottam, Mr. David	28
15-Apr-09 12:00 AM		WO53673	23-Apr-2009	Cottam, Mr. David	28
15-Apr-09 12:00 AM		WO53680	23-Apr-2009	Cottam, Mr. David	28
15-Apr-09 12:00 AM		WO53670	01-May-2009	Cottam, Mr. David	28
15-Apr-09 12:00 AM		WO53671	01-May-2009	Cottam, Mr. David	28
15-Apr-09 12:00 AM		WO53675	01-May-2009	Cottam, Mr. David	28
15-Apr-09 12:00 AM		WO53674	01-May-2009	Cottam, Mr. David	28
15-Apr-09 12:00 AM		WO53676	01-May-2009	Cottam, Mr. David	28
15-Apr-09 12:00 AM		WO53677	01-May-2009	Cottam, Mr. David	28
12-May-09 12:00 AM	55314	WO58604	09-Jun-2009	Cottam, Mr. David	28
12-May-09 12:00 AM		WO58610	09-Jun-2009	Cottam, Mr. David	28
12-May-09 12:00 AM		WO58611	09-Jun-2009	Cottam, Mr. David	28
12-May-09 12:00 AM		WO58613	12-Jun-2009	Cottam, Mr. David	28
12-May-09 12:00 AM		WO58580	19-Jun-2009	Cottam, Mr. David	28
12-May-09 12:00 AM		WO58602	19-Jun-2009	Cottam, Mr. David	28
12-May-09 12:00 AM		WO58615		Cottam, Mr. David	28
12-May-09 12:00 AM		WO58616		Cottam, Mr. David	28
09-Jun-09 12:00 AM	60060			Manr, Mr. Wayne	28
10-Jul-09 12:00 AM	63267	WO66914	13-Jul-2009	Cottam, Mr. David	28
10-Jul-09 12:00 AM		WO66915	13-Jul-2009	Cottam, Mr. David	28
10-Jul-09 12:00 AM		WO66913	27-Jul-2009	Cottam, Mr. David	28
12-Aug-09 12:00 AM	67653	WO72078	13-Aug-2009	Cottam, Mr. David	28
12-Aug-09 12:00 AM		WO72080	13-Aug-2009	Cottam, Mr. David	28
12-Aug-09 12:00 AM		WO72076	02-Sep-2009	Cottam, Mr. David	28
12-Aug-09 12:00 AM		WO72077		Cottam, Mr. David	28
12-Aug-09 12:00 AM		WO72079		Cottam, Mr. David	28
02-Sep-09 12:00 AM	72579	WO75296	21-Sep-2009	Cottam, Mr. David	28
02-Sep-09 12:00 AM		WO75297	21-Sep-2009	Cottam, Mr. David	28
02-Sep-09 12:00 AM		WO75298	21-Sep-2009	Cottam, Mr. David	28
02-Sep-09 12:00 AM		WO75299	12-Oct-2009	Cottam, Mr. David	28
01-Oct-09 12:00 AM	76934	WO81446	02-Oct-2009	Cottam, Mr. David	28
01-Oct-09 12:00 AM		WO81451	02-Oct-2009	Cottam, Mr. David	28
01-Oct-09 12:00 AM		WO81447	19-Oct-2009	Cottam, Mr. David	28
01-Oct-09 12:00 AM		WO81449	19-Oct-2009	Cottam, Mr. David	28
01-Oct-09 12:00 AM		WO81450	19-Oct-2009	Cottam, Mr. David	28
01-Oct-09 12:00 AM		WO81453	19-Oct-2009	Cottam, Mr. David	28

01-Oct-09 12:00 AM		WO81448				Cottam, Mr. David	28
01-Oct-09 12:00 AM		WO81452				Cottam, Mr. David	28
28-Oct-09 12:00 AM	83382	WO87575	03-Nov-2009		Heavy Leaf Fall	Cottam, Mr. David	28
28-Oct-09 12:00 AM		WO87571	16-Nov-2009			Cottam, Mr. David	28
28-Oct-09 12:00 AM		WO87572	16-Nov-2009			Cottam, Mr. David	28
28-Oct-09 12:00 AM		WO87573				Cottam, Mr. David	28
28-Oct-09 12:00 AM		WO87574				Cottam, Mr. David	28
02-Dec-09 12:00 AM	90080	WO96175	03-Dec-2009		Light Rain	Cottam, Mr. David	28
02-Dec-09 12:00 AM		WO96179	03-Dec-2009			Cottam, Mr. David	28
02-Dec-09 12:00 AM		WO96180	03-Dec-2009			Cottam, Mr. David	28
02-Dec-09 12:00 AM		WO96174				Cottam, Mr. David	28
02-Dec-09 12:00 AM		WO96176				Cottam, Mr. David	28
02-Dec-09 12:00 AM		WO96177				Cottam, Mr. David	28
02-Dec-09 12:00 AM		WO96178				Cottam, Mr. David	28
02-Dec-09 12:00 AM		WO96181				Cottam, Mr. David	28
02-Dec-09 12:00 AM		WO96183				Cottam, Mr. David	28
02-Dec-09 12:00 AM		WO96184				Cottam, Mr. David	28
02-Dec-09 12:00 AM		WO96185				Cottam, Mr. David	28
02-Dec-09 12:00 AM		WO96186				Cottam, Mr. David	28
13-Jan-10 12:00 AM	96884	WO104347	14-Jan-2010		Snow	Cottam, Mr. David	28
13-Jan-10 12:00 AM		WO104345				Cottam, Mr. David	28
13-Jan-10 12:00 AM		WO104346				Cottam, Mr. David	28
13-Jan-10 12:00 AM		WO104348				Cottam, Mr. David	28
13-Jan-10 12:00 AM		WO104349				Cottam, Mr. David	28
13-Jan-10 12:00 AM		WO104350				Cottam, Mr. David	28
13-Jan-10 12:00 AM		WO104351				Cottam, Mr. David	28
13-Jan-10 12:00 AM		WO104352				Cottam, Mr. David	28
	101488						28



Details of
Resurfacing
works

Summary | Details | Sites | Contacts | History | Works Charges | Index Groups | Activities | Fields | Objects

Works Ref. AT01-G-LIVE-00000635/R01 BOLTON HIGHWAYS EDI
 L.A.Ref 00177934 Works Status WORKS CLOSED Permit Scheme T/S P/S S/R
 Address CHORLEY NEW ROAD E/D Res Oth
 BOLTON, BOLTON CWV CARRIAGEWAY TYPE 2 - 2.5 TO 10 MS *MANY*
 NSG Ref. 034/01082 FAW
 Description footway resurfacing
 Location 43 CNR TO 59 CNR Post Code

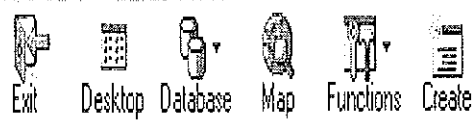
Works Stage Dates	Latest Promoter Notice	<input type="checkbox"/> Held	Latest Authority Notice
Interim Due	Notice Type RESTRICTION IN FORCE	Notice Type	
Interim Complete	Works Type ROAD RESTRICTION	Duration Est.	
Permanent Due	Works Start 29/04/2009	Works Start	
Permanent Complete	End 08/05/2009	End	
Remedial Complete	Originated 10/12/2009 12:57	Originated	
Warranty End	Issued 10/12/2009 12:57	Issued	
Works Abandoned	Notice Text	Notice Text	
	<input type="checkbox"/> Restricted? <input type="text" value=""/>		<input type="text" value=""/>

Project Ref.

Description

Last Inspection Type	Date	Result	<input type="checkbox"/> Attachments
Next Inspection Type	Date		
Last Comment OD	Date	Type	

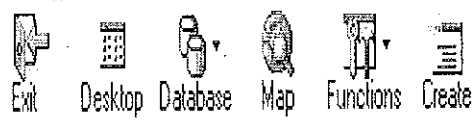
Description



Address | Works/Promoter | Project | L.A.Ref | Town/Locality | Index Group | Contact

Address: CHORLEY NEW ROAD
 BOLTON
 Promoter Prefix: AT02
 Gazetteer: Works Status
 Start Date From: To
 Search

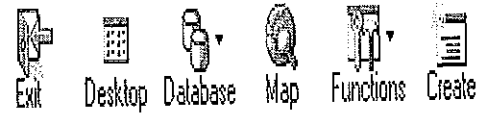
Address 1	Works Reference	Site Location	Start	End	L
CHORLEY NEW ROAD	AT02-937037	Bolton School	05/01/2008	31/03/2008	00
CHORLEY NEW ROAD	AT02-937037	All around Bolton School	05/05/2008	31/10/2008	00
CHORLEY NEW ROAD	AT02-931082	J/o Bedford Street at Queens Park	04/02/2008	10/03/2008	00
CHORLEY NEW ROAD	AT02-315057	J/O GREENMOUNT LANE	16/04/2007	27/04/2007	00
CHORLEY NEW ROAD	AT02-277005/C	J/O BEVERLEY ROAD	08/03/2006	29/03/2006	00



Address | Works/Promoter | Project | L.A.Ref | Town/Locality | Index Group | Contact

Address: CHORLEY NEW ROAD
 BOLTON
 Promoter Prefix: AT04
 Gazetteer: [] Works Status: []
 Start Date From: [] To: []
 Search

Address 1	Works Reference	Site Location	Start	End	L
CHORLEY NEW ROAD	AT04-G-LIVE-00000631	43 CNR TO 59 CNR	05/05/2009	18/05/2009	00
CHORLEY NEW ROAD	AT04-G-LIVE-00000635	43 CNR TO 59 CNR	29/04/2009	08/05/2009	00
CHORLEY NEW ROAD	AT04-G-LIVE-00000634	FROM BEDFORD ST TO PARK ROAD	05/05/2009	18/05/2009	00
CHORLEY NEW ROAD	AT04-G-LIVE-00000633	FROM PEMBROKE ST TO 41 CNR	29/04/2009	18/05/2009	00
CHORLEY NEW ROAD	AT04-CNR	Greenmount Lane - Beaumont Road	09/02/2008	31/03/2008	00
CHORLEY NEW ROAD	AT04-21-11-028	JUNC SOMERSET RD	04/09/2005	05/09/2005	00



Address | Works/Promoter | Project | L.A.Ref | Town/Locality | Index Group | Contact

Address: CHORLEY NEW ROAD
 BOLTON
 Promoter Prefix: AT07

Gazetteer: [] Works Status: []
 Start Date From: [] To: []

Search

Address 1	Works Reference	Site Location	Start	End	L
CHORLEY NEW ROAD	AT07/7/57	346	2006/10/09	2006/10/09	100