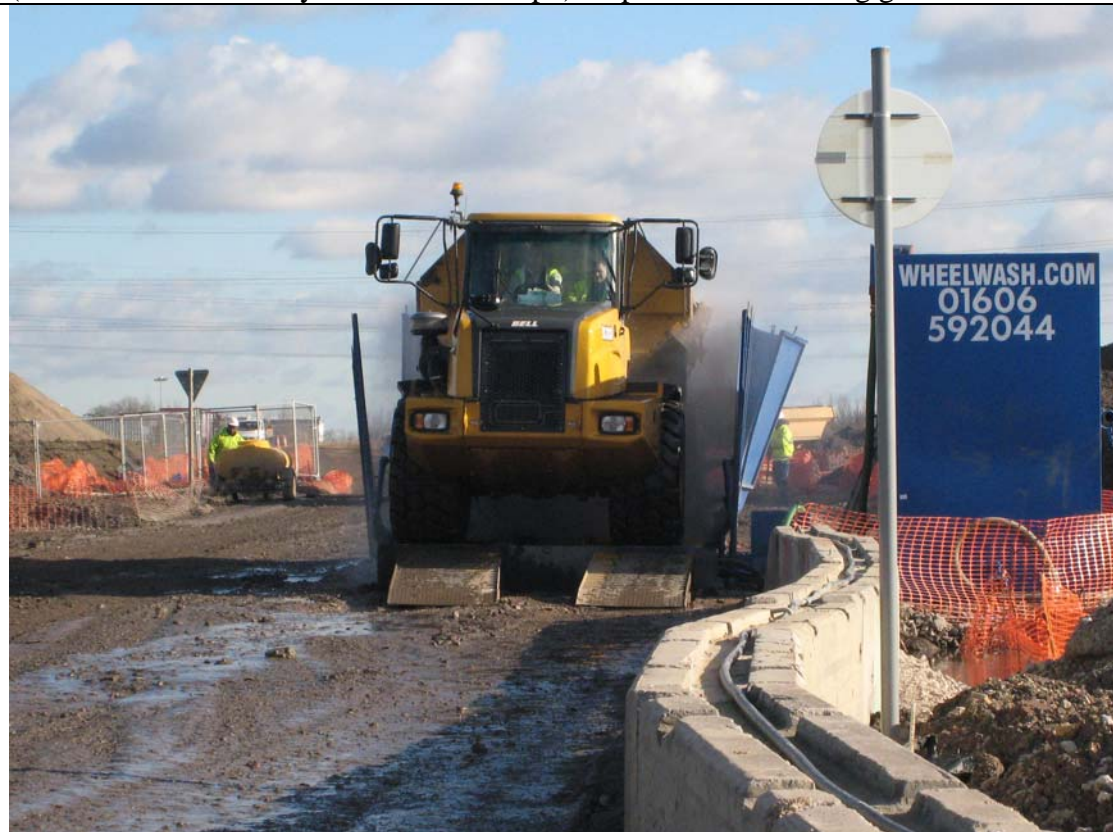




Main haul routes hard-surfaced for easier dust management. Strict speed limits (reduced further in May from 20 to 15 mph) help reduce dust being generated



One of the 7 wheel washes on site in use



Dampening down of stockpile prior to excavation to help reduce dust



One of 10 mobile bowers on site that constantly dampen down the site roads



Another of the 10 mobile bowzers in operation



Same bowser in operation



Application of Dustbuster2 onto a stockpile of material. This has been approved by Environment Agency (as it does not harm aquatic life if it enters a watercourse). This chemical binder forms a crust over the material.



Rotary atomisers brought in to trial for localised dusty activities



Tarmacing of new haul routes throughout site



Two of several road sweepers we have on site that manage the hard-surfaced haul routes



Another of the 7 wheel washes on site.



Another bowser



Seeded stockpile in CZ7



Another section of internal haul road is tarmaced. Currently 8km of internal haul road is tarmaced. Other areas are covered with the human health protection layer (hardcore) as soon as final levels are achieved. Prior to that they are dampened down using mobile bowzers.